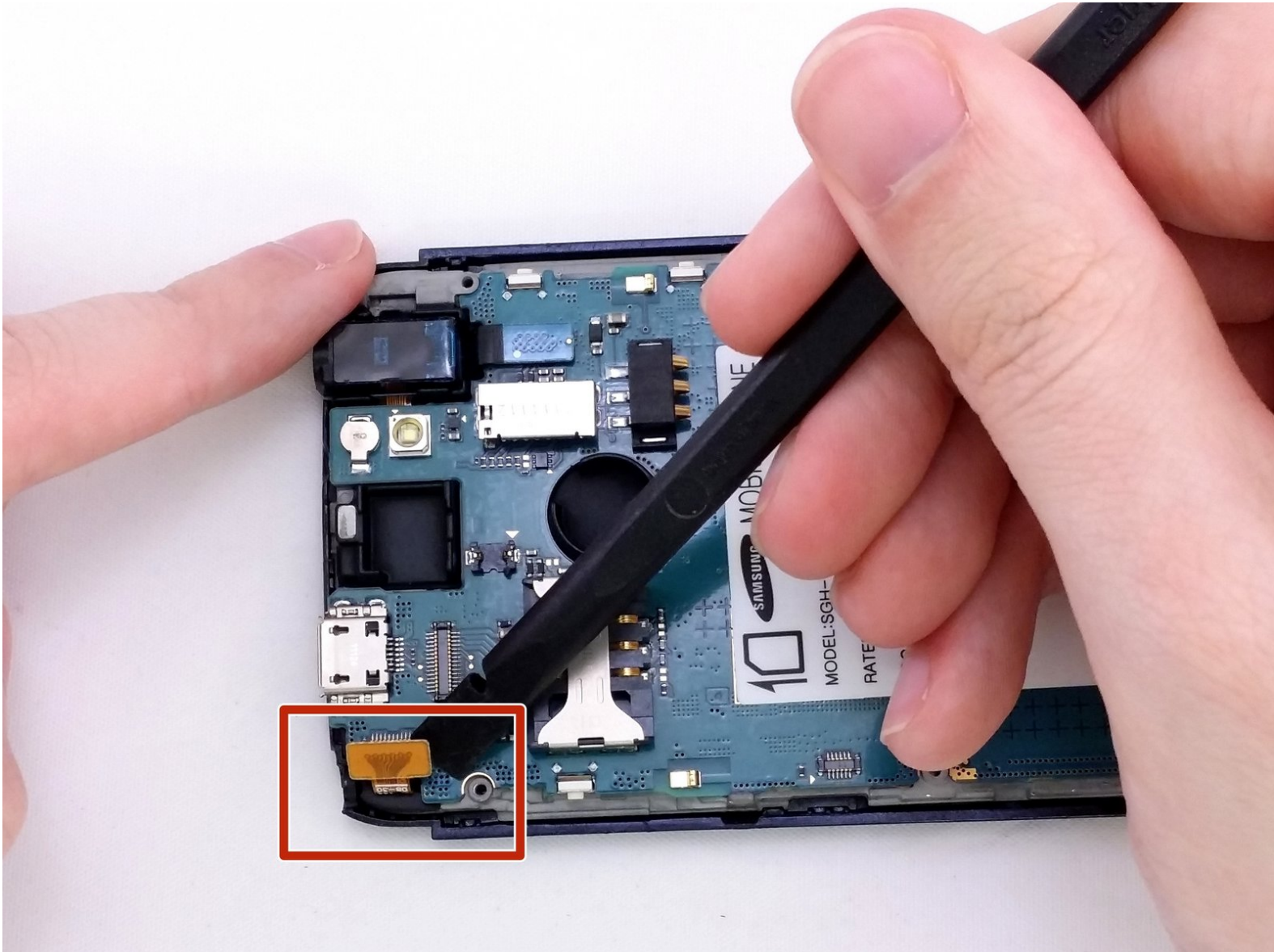




Samsung Exhibit II 4G Motherboard Replacement

Replace the Motherboard in your Samsung Exhibit II 4G.

Written By: David R



INTRODUCTION

Use this guide to replace a defective Motherboard.



TOOLS:

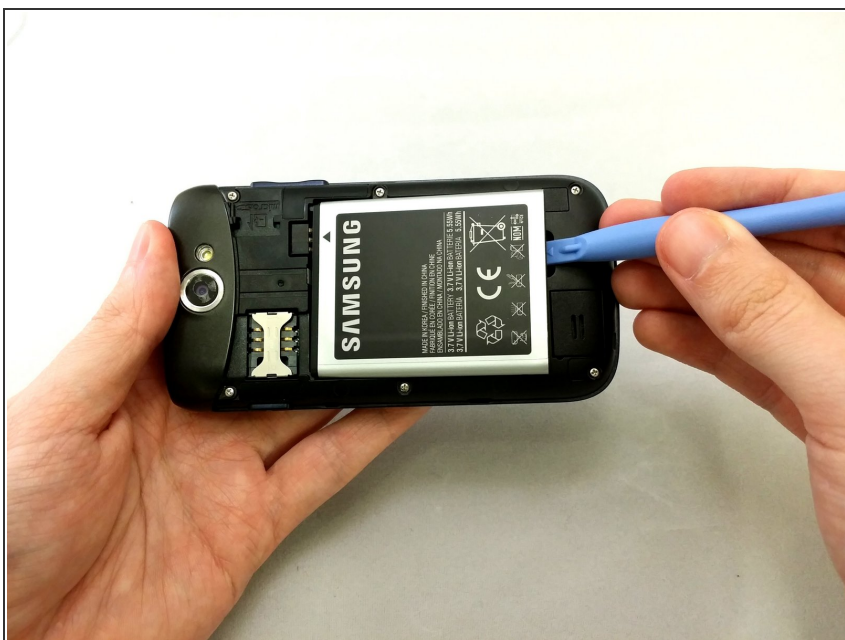
- [Phillips #000 Screwdriver](#) (1)
 - [iFixit Opening Tools](#) (1)
 - [Spudger](#) (1)
-

Step 1 — Battery



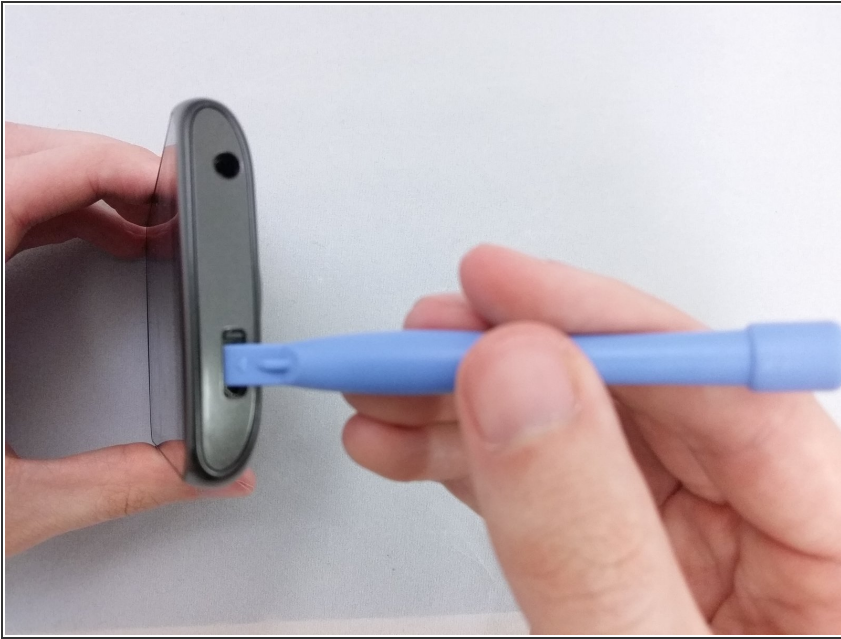
- Insert plastic opening tool under back cover.
- Apply pressure on tool while using a downward motion to pop off back cover.

Step 2



- Insert plastic opening tool under battery.
- Pry battery out.

Step 3 — Top Rear Housing Cover



- Insert plastic opening tool under back cover.
- Pry the top cover upward to remove it from the phone.

Step 4



- Remove the top cover.

Step 5



- Remove the four 3.8mm Phillips #000 screws securing the top cover to the back assembly.

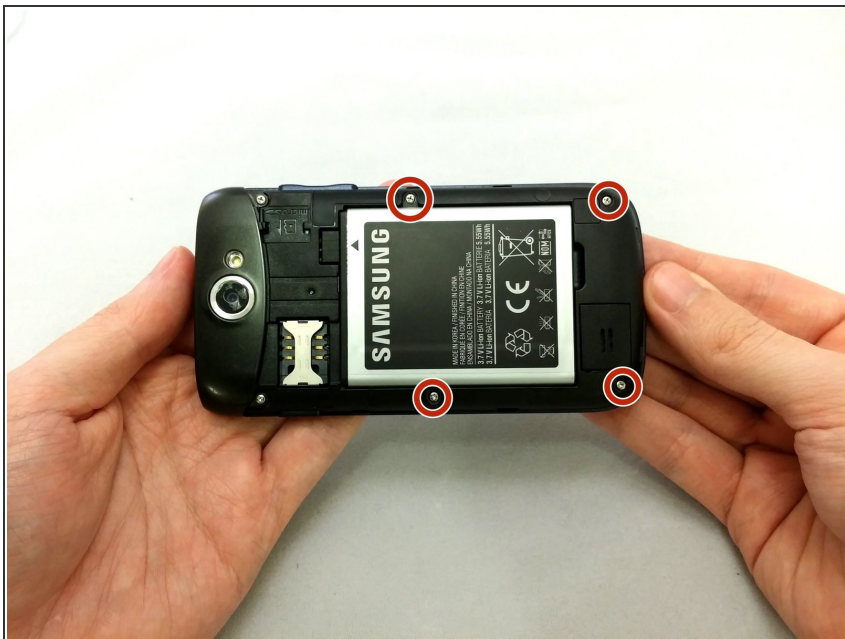
i Two screws from top and two screws from back.

Step 6



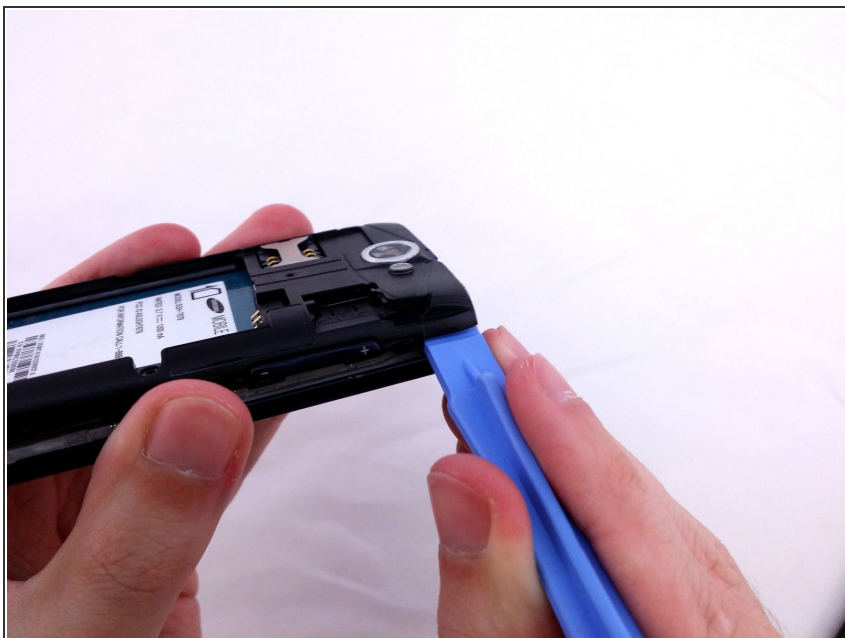
- Insert plastic opening tool under top cover.
- Using hand slide top cover away from phone.

Step 7 — Midframe



- Remove the four 3.8mm Phillips #000 screws securing the back assembly to the phone.

Step 8



- Insert plastic opening tool between back assembly and phone.
- Pry the back assembly away from phone.

Step 9



- With plastic opening tool continue prying around the edge of the back assembly.

Step 10



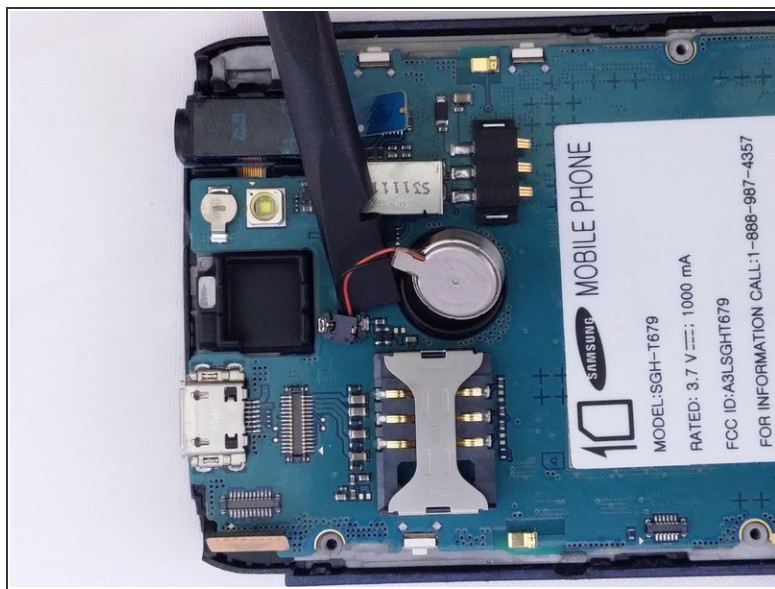
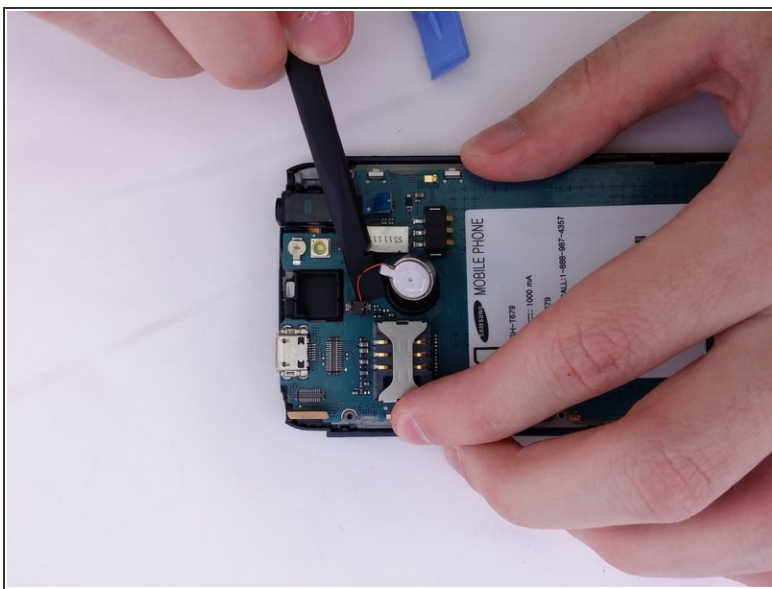
- Pull back panel assembly away from main body.

Step 11 — Vibration Motor



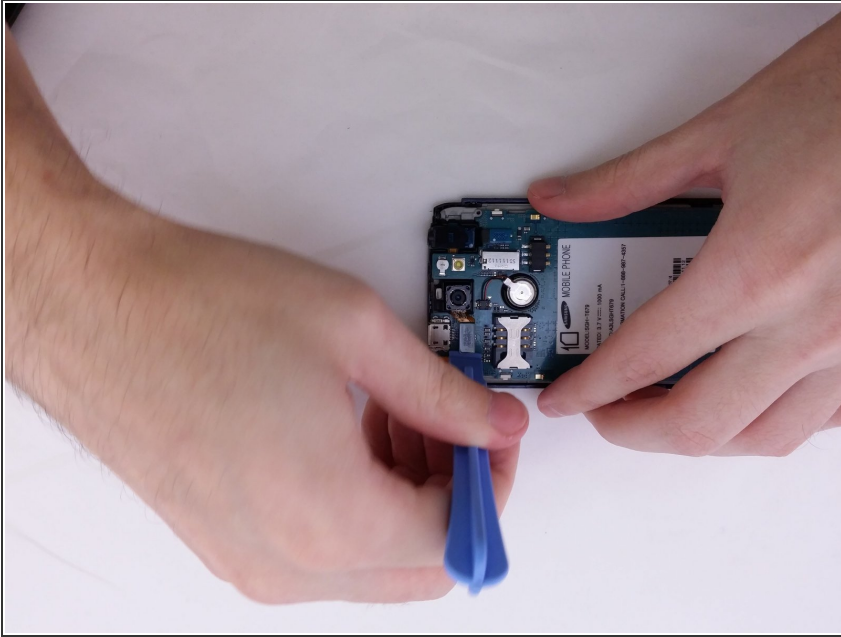
- Insert the pointed end of a spudger into the gap in the round housing frame.
- Using spudger to remove vibrator remove from the adhesive.

Step 12



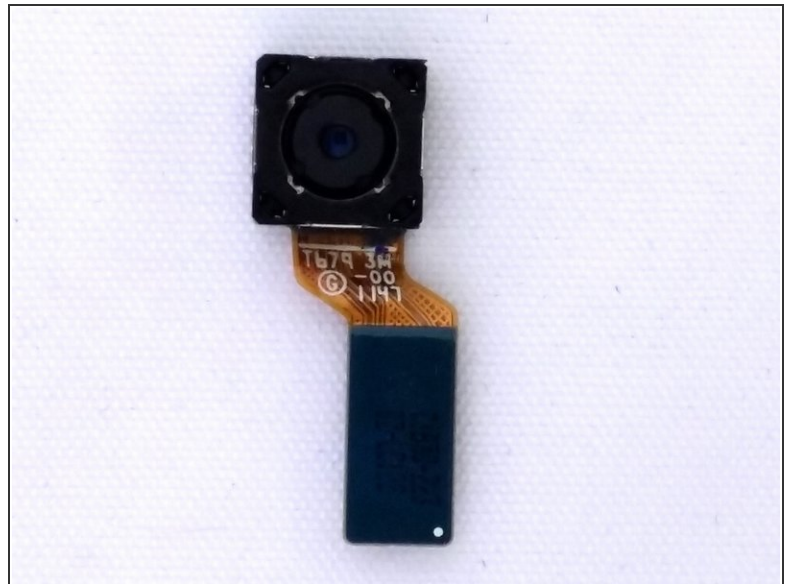
- Use the flat end of a spudger to remove vibrator cable from motherboard.

Step 13 — Rear Facing Camera



- Use the flat end of a spudger to disconnect the camera assembly cable.

Step 14



- Remove camera from square housing.

Step 15 — Motherboard

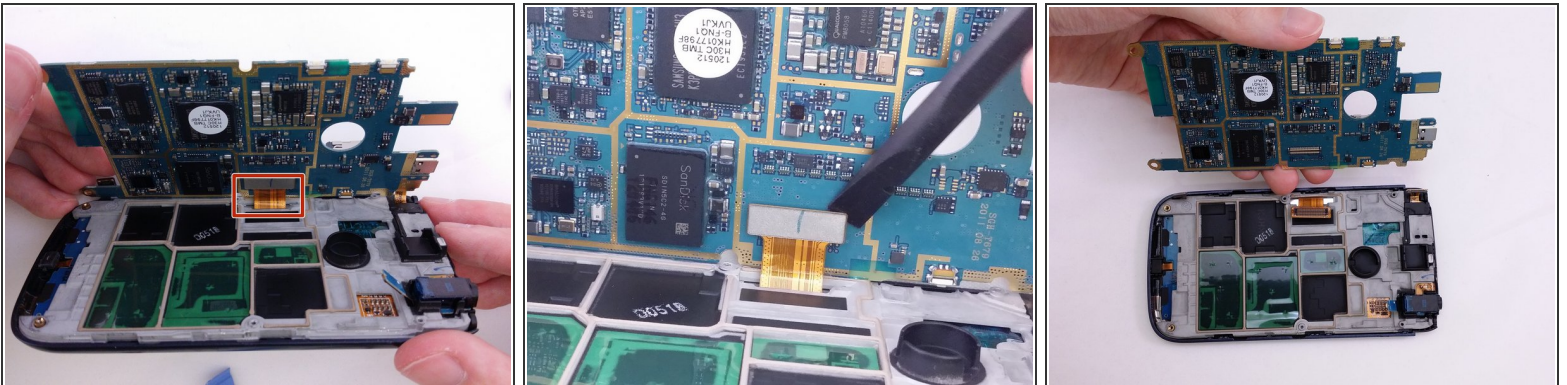


- Insert the spudger under each corner ribbon cable and lift them out of the way.

⚠ Use care when lifting the ribbon cables.

- Insert a plastic pry tool into the gap between motherboard and base of phone

Step 16



- Tilt the motherboard up carefully.

⚠ Be sure not to damage the ribbon cable still connected at the bottom of the motherboard.

- Use a spudger to pry the connector from the socket on the motherboard.
- Lift motherboard from frame.

To reassemble your device, follow these instructions in reverse order.