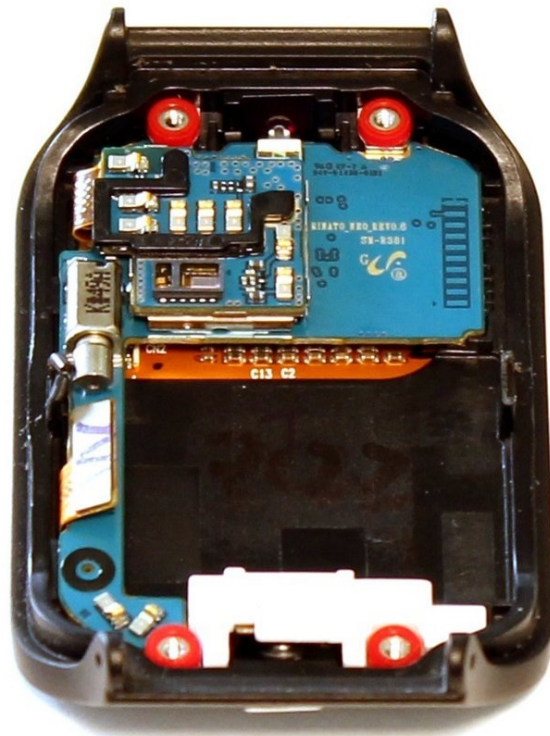




# Samsung Gear 2 Neo Display Replacement

The Samsung Gear 2 Neo comes equipped with...

Written By: Andrew W.



# INTRODUCTION

The Samsung Gear 2 Neo comes equipped with protective features like Corning Gorilla ® Glass 3 to protect its AMOLED display from damage, but, if you learned anything from Jurassic Park, you'll know that no system is foolproof and the Gear 2 Neo is no exception.

Fortunately, the display is not all that difficult to access, however, the danger lies in the method by which the display is affixed to the watch. Follow along closely, and you'll have your Gear 2 Neo back up and running in 20 to 30 minutes.

---

## TOOLS:

[Spudger](#) (1)

[T5 Torx Screwdriver](#) (1)

[Precision Tweezers Set](#) (1)

[Anti-Static Wrist Strap](#) (1)

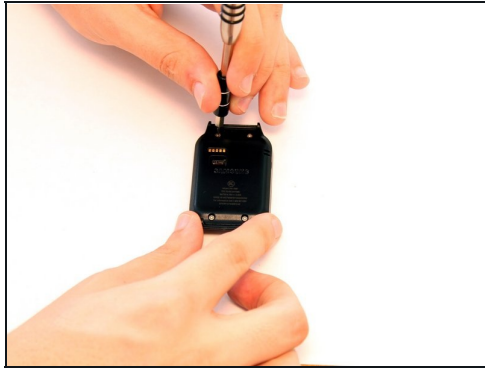
---

## Step 1 — Removing the Watch Band



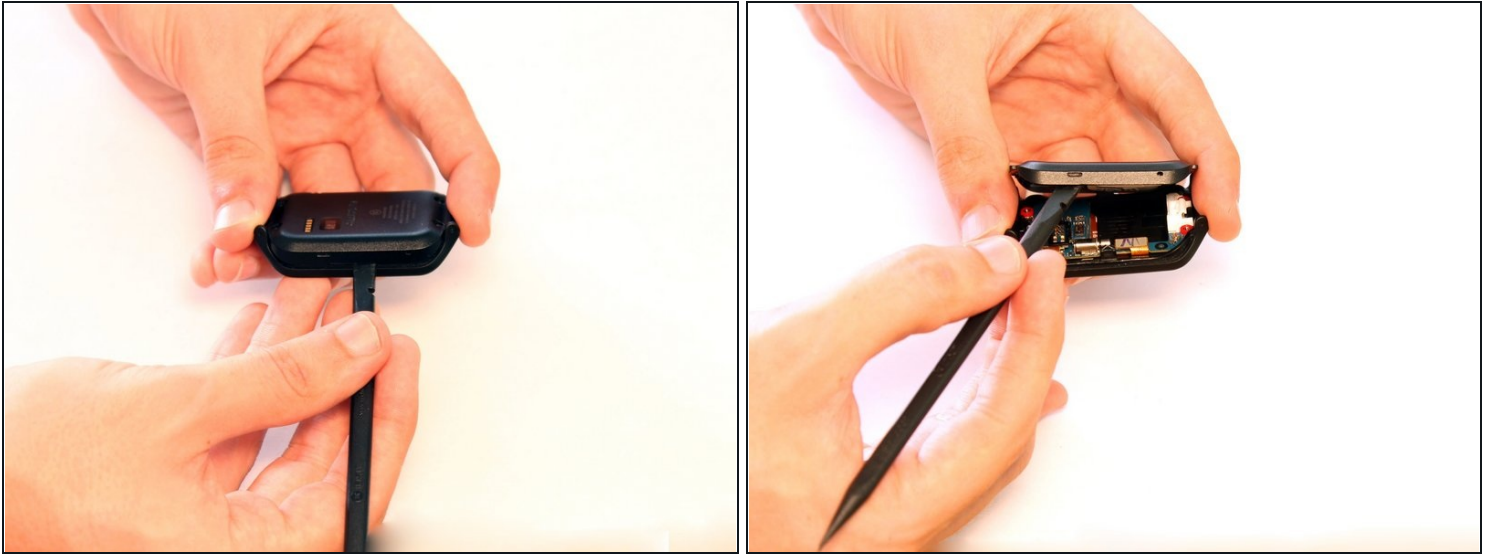
- To remove the Gear 2 Neo's watch band, start by locating the small metal levers on either end of the band.
- Using your finger, push downward on the lever to release the band locking mechanism.
  - ⓘ Note: If you have especially short fingernails, it may be easier to use a spudger to depress the levers.
- Continue to hold the lever down and pull the end of the band away from the watch to completely detach it.
- Repeat this process for the other side of the band to fully release it.

## Step 2 — Opening the Watch Assembly



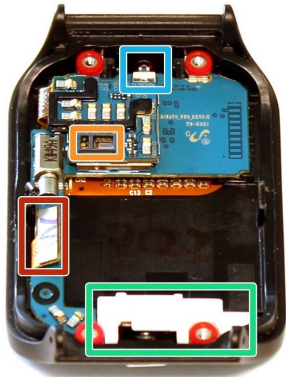
- Start by removing the four Torx T5 Security Screws from the back panel of the Watch Assembly.

### Step 3 — Opening the Watch Assembly



- Once the four Torx screws have been removed from the Watch Assembly, using a spudger, gently pry the front and back halves of the watch away from each other. This is best accomplished by placing the head of the spudger in the space between the two halves and rotating the head until the two halves split apart.  
**⚠ Be careful not to let the spudger slip into the casing too far; doing so could damage the internal components.**
- Once the two halves have separated simply lift the back half up and away from the front half to complete this step.
  - ① There are no cables connecting the front and back halves of the watch together; there is no need to worry about pulling any cables or connectors out in this step.

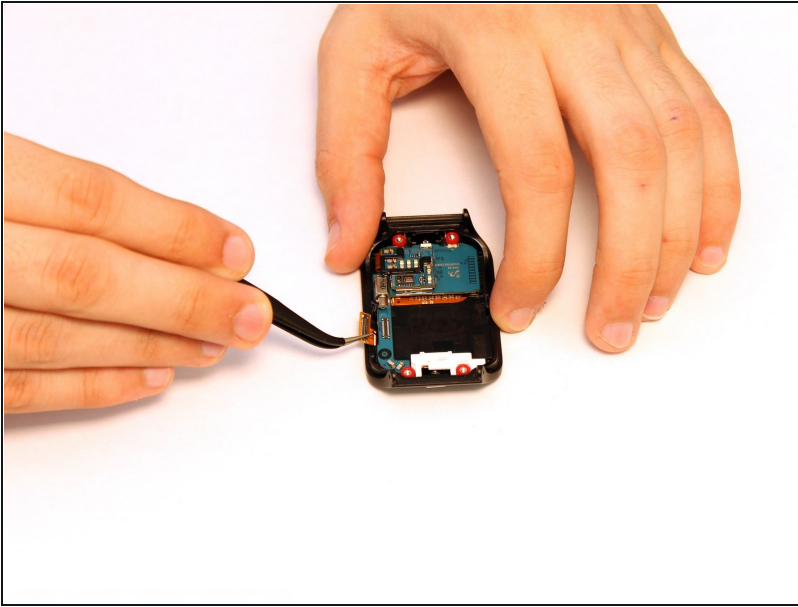
## Step 4



- Once separated, the front half of the device is easily distinguished from the back by the blue mainboard. Take a moment to familiarize yourself with the important components presented in this half of the device before continuing.
- AMOLED display connector
- Heart Rate Sensor
- Front button assembly
- Infrared Blaster

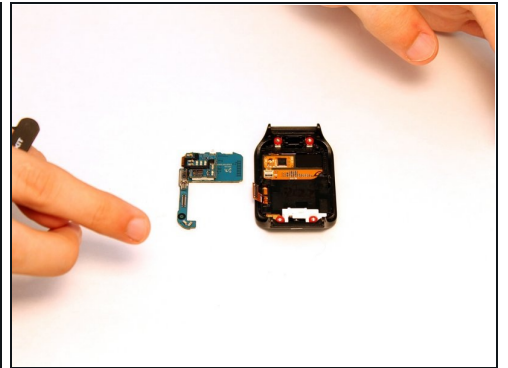
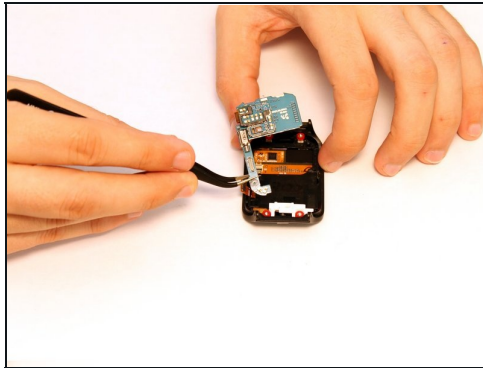
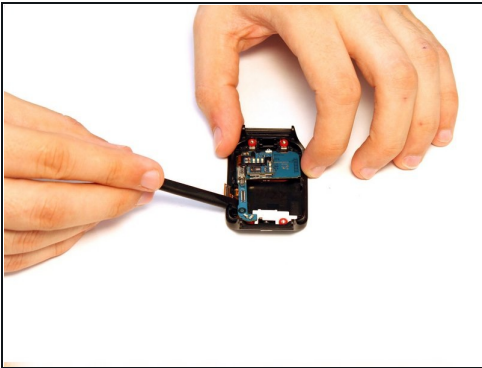
⚠ Be aware that the small red rings seated on the four screw mounting points form part of the seal that prevents moisture from entering the main assembly. Be careful to replace these if they fall off during the repair process or the Gear 2 Neo will become dramatically less water resistant.

## Step 5 — Detaching the AMOLED Display Connector



- Using a pair of precision tweezers, gently grip and disconnect the AMOLED display connector from the mainboard.

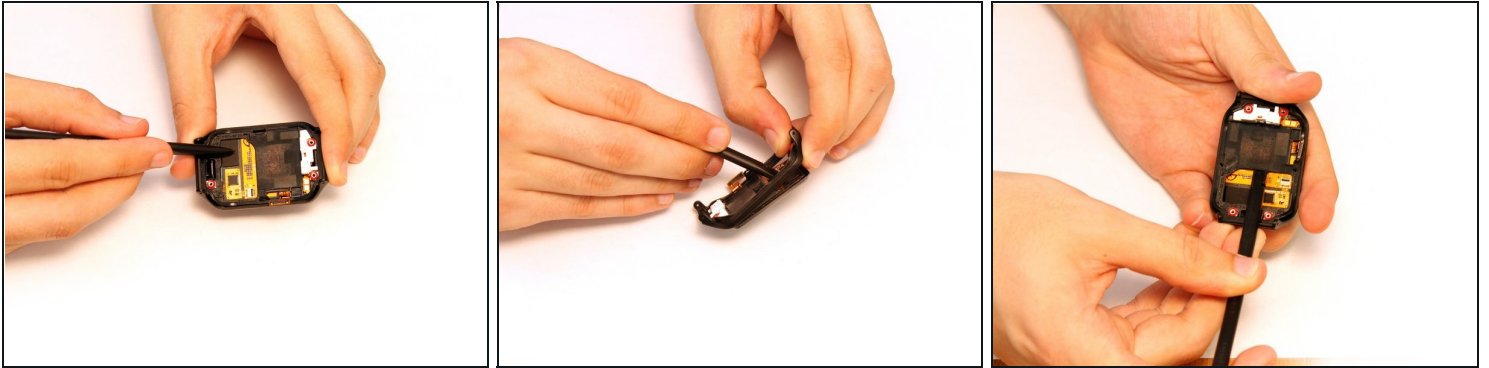
## Step 6 — Removing the Mainboard



- The mainboard is secured in place by a shaped snap-fit plastic bracket. Simply apply pressure under the mainboard using a spudger to free it.
  - Once the mainboard is released from the bracket, use a pair of precision tweezers to remove the mainboard completely.
- ⚠ The mainboard is an ESD sensitive device and should be handled with care to avoid static discharge. It is recommend you use an [anti-static wrist strap](#) when handling this component.

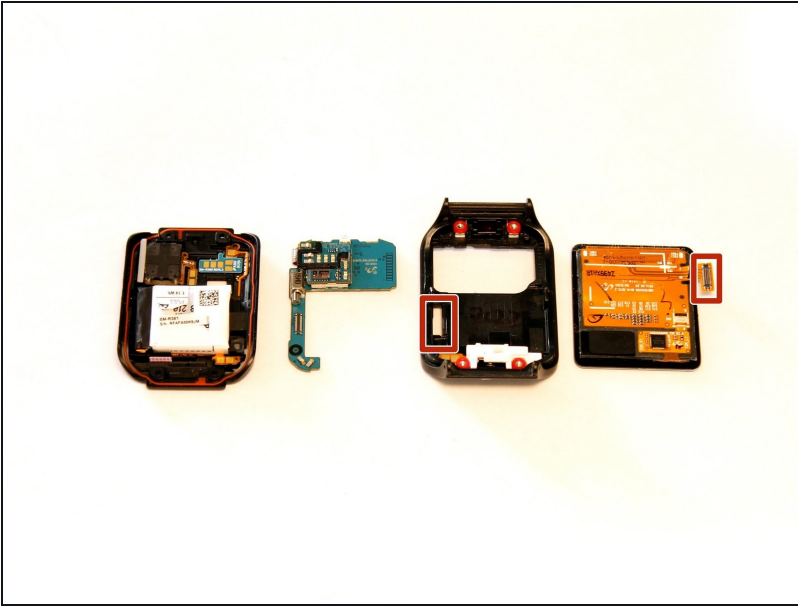


## Step 7 — Removing the AMOLED Display



- The AMOLED display is secured to the front watch assembly with adhesive in two different ways; one being an adhesive ring around the edge, and two being a small adhesive application between the display and front watch assembly.
- In order to free the display, use a spudger to gently apply pressure to the back of the AMOLED panel until the top half the the display separates from the front panel.
  - ⚠ Do not attempt to force the display all the way off of the front assembly in this step. Doing so will likely flex the AMOLED display enough to shatter it. The adhesive application on the backside of the display must first be removed.
- Once the top half of the display has been separated from the front panel, use a spudger to clear the adhesive from the underside of the display.
- When the underside of the display has been cleared of adhesive, continue to apply pressure with the spudger until the display comes free of the front watch assembly.
  - ⓘ Be sure to leave the adhesive ring in place once the display has been removed; it is critical for installing the new AMOLED display.

## Step 8



- With the AMOLED display removed, the device is now ready for the replacement.
- When installing the new screen, be sure to feed the display cable back through the hole provided for reconnection to the mainboard.

---

To reassemble your device, follow these instructions in reverse order.