



Samsung Gear 2 Neo Battery Replacement

This guide will demonstrate the steps and tools necessary to remove and replace the 300mAh Gear 2 Neo Battery.

Written By: Andrew W.



INTRODUCTION

Regular use and wear often leaves devices with rechargeable batteries, like the Gear 2 Neo, with a shorter than average battery life (if any at all). If this sounds like your device, then you've come to the right place. Today we'll be replacing the 300mAh battery that powers the Samsung Gear 2 Neo.

Follow along closely, and you'll have your smartwatch back up and charging in about 15 minutes.

TOOLS:

- [Spudger](#) (1)
 - [T5 Torx Screwdriver](#) (1)
 - [Fingers](#) (1)
-

Step 1 — Removing the Watch Band



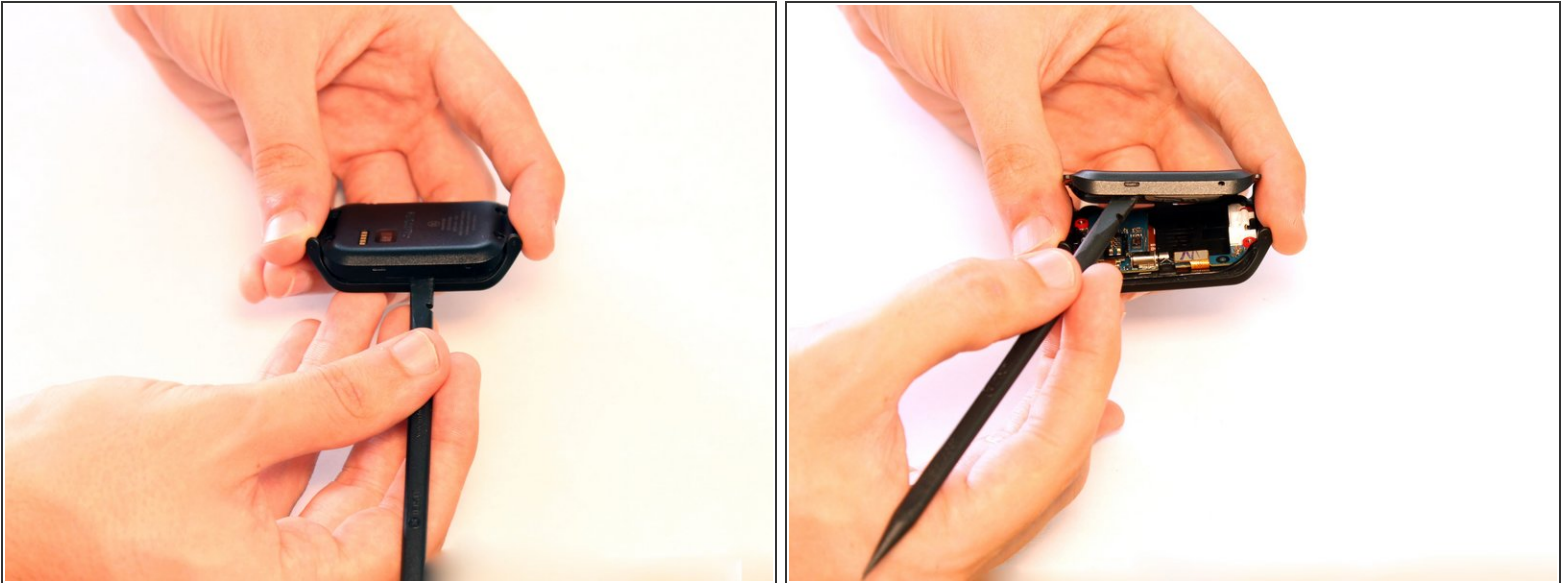
- To remove the Gear 2 Neo's watch band, start by locating the small metal levers on either end of the band.
- Using your finger, push downward on the lever to release the band locking mechanism.
 - ⓘ Note: If you have especially short fingernails, it may be easier to use a Spudger to depress the levers.
- Continue to hold the lever down and pull the end of the band away from the watch to completely detach it.
- Repeat this process for the other side of the band to fully release it.

Step 2 — Opening the Watch Assembly



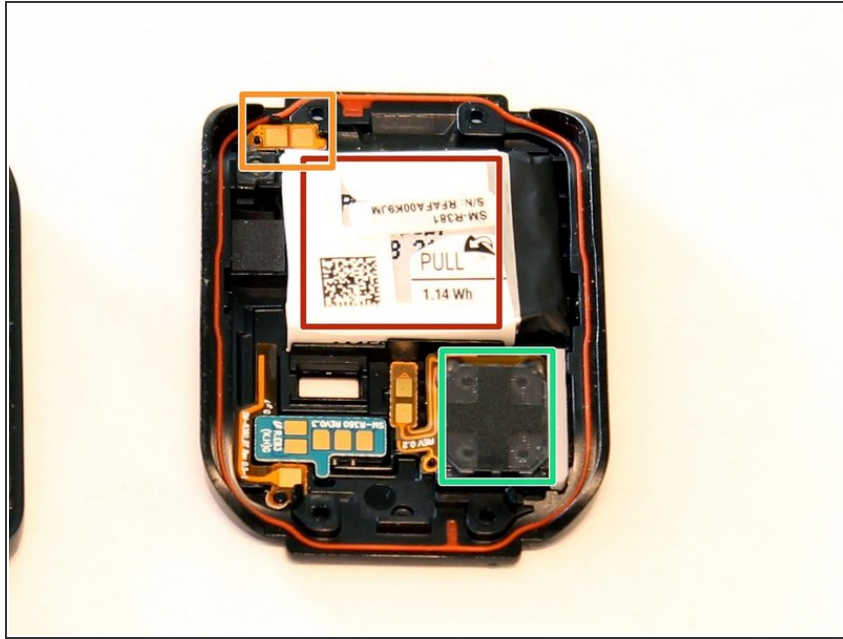
- Start by removing the four Torx T5 Security Screws from the back panel of the Watch Assembly.

Step 3 — Opening the Watch Assembly




- Once the four Torx screws have been removed from the Watch Assembly, using a spudger, gently pry the front and back halves of the watch away from each other. This is best accomplished by placing the head of the spudger in the space between the two halves and rotating the head until the two halves split apart.
 - ⚠ Be careful not to let the spudger slip into the casing too far; doing so could damage the internal components.
- Once the two halves have separated simply lift the back half up and away from the front half to complete this step.
- ⓘ There are no cables connecting the front and back halves of the watch together; there is no need to worry about pulling any cables or connectors out in this step.

Step 4



- Once separated, the back half of the device is easily distinguished from the front by the large white battery. Take a moment to familiarize yourself with the important components presented in this half of the device before continuing.

- 300 mAh Battery
- Battery Connector (attached by way of adhesive)
- Device Speaker.

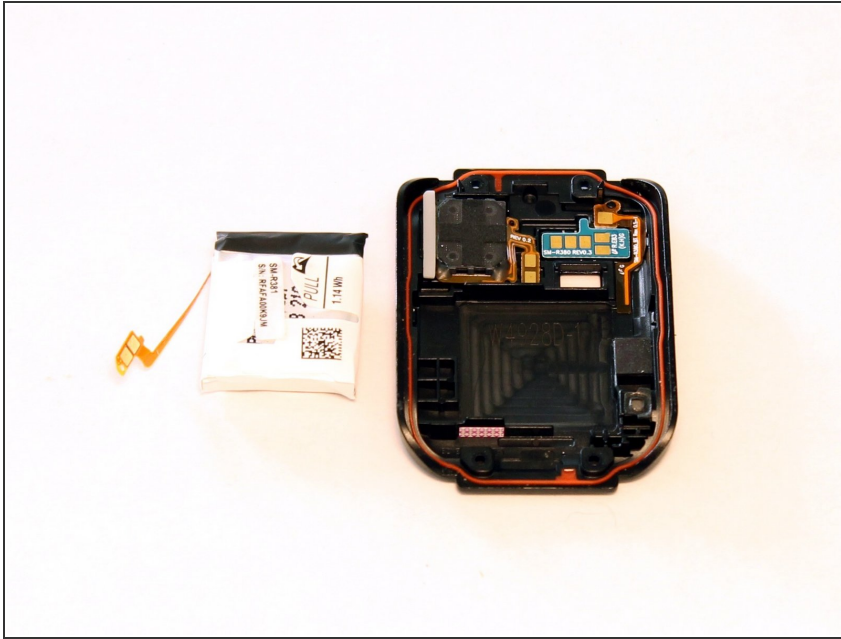
 Be aware that the orange lining around the edge of the device forms part of the seal that prevents moisture from entering the main assembly. Be careful to not disturb this lining or the Gear 2 Neo will become dramatically less water resistant.

Step 5 — Removing the Battery




- To remove the battery, simply use the provided tab labeled "pull" to separate the battery from the casing. Do not pull the battery all the way out quite yet; there is still the matter of detaching the battery connector.
- ⓘ There is a small application of adhesive on the underside of the battery. When lifting the battery away, if you feel a bit of resistance, feel free to press down on the casing to give yourself a bit of leverage.
- ⚠ Caution: Be very careful not to puncture the battery in this step or while recycling; doing so can result in the release of dangerous gases and an explosive reaction.
- Finally, using a spudger, separate the end of the battery connector cable, (held in place by another small application of adhesive and a plastic pin) from the casing.

Step 6



- Installing the new battery is as easy as setting the new battery in the indent made for it and re-seating the connector around the pin. With this done, the repair is complete!

 Be sure to recycle the old rechargeable battery in a safe manner. Please check nearby for recycling centers and drop-offs for electronic waste.

To reassemble your device, follow these instructions in reverse order.