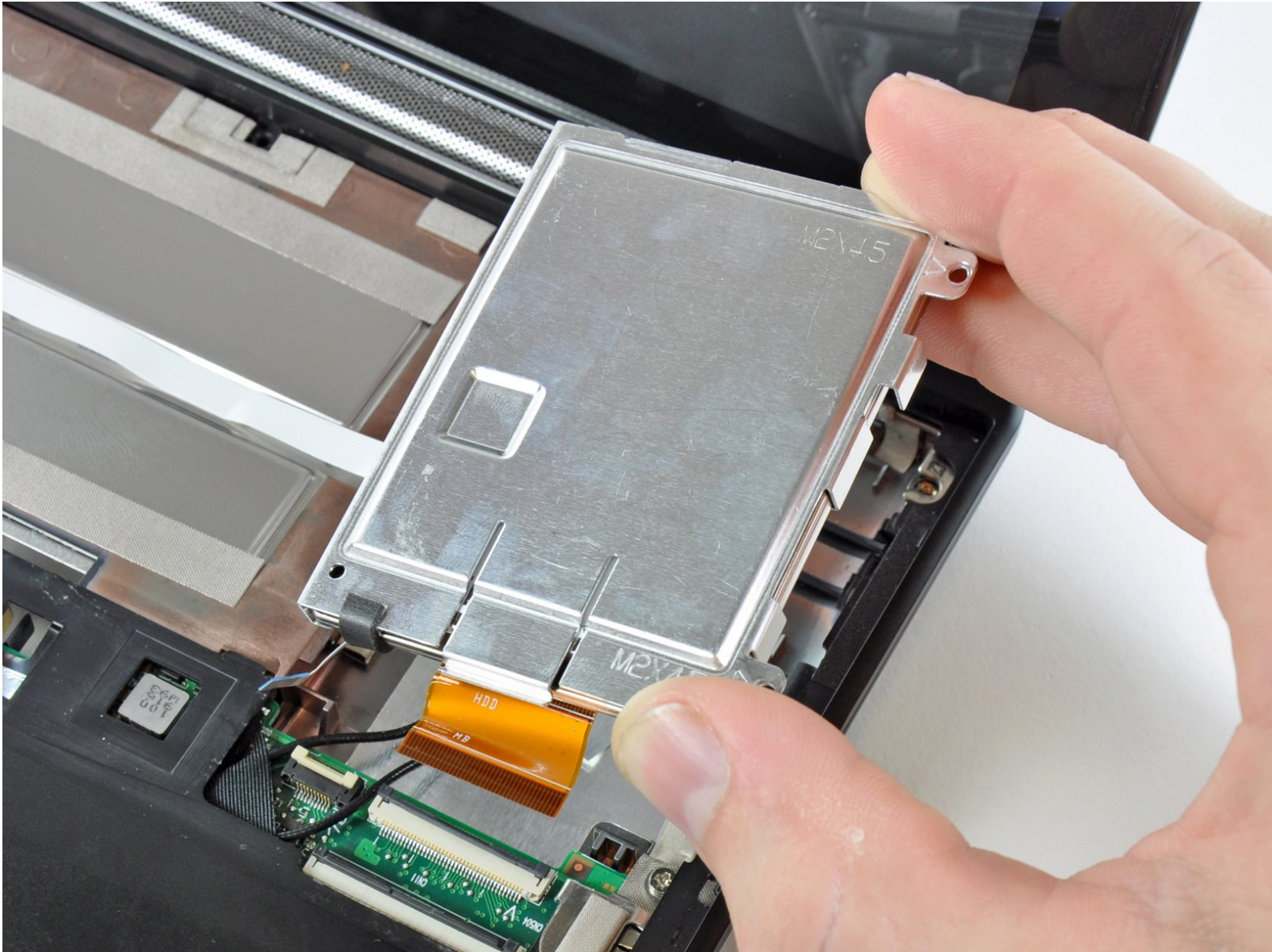




HP Mini 1000 Hard Drive Replacement

Written By: Walter Galan



INTRODUCTION

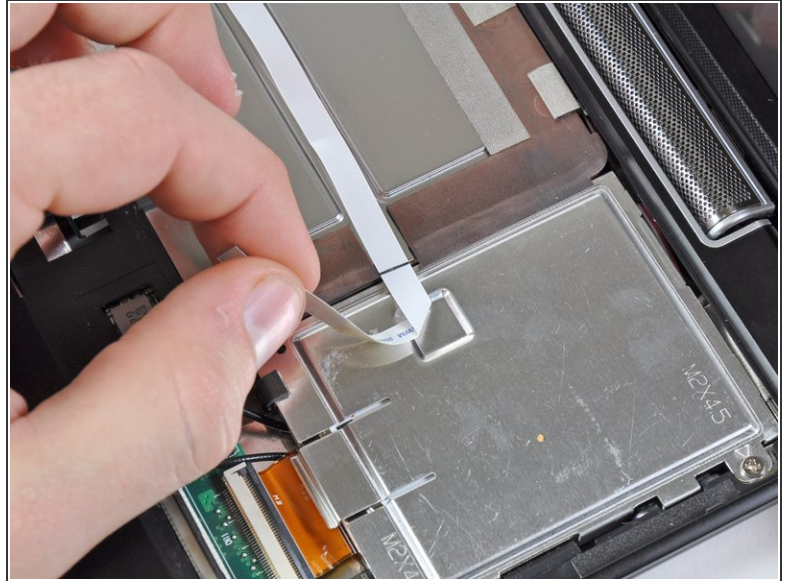
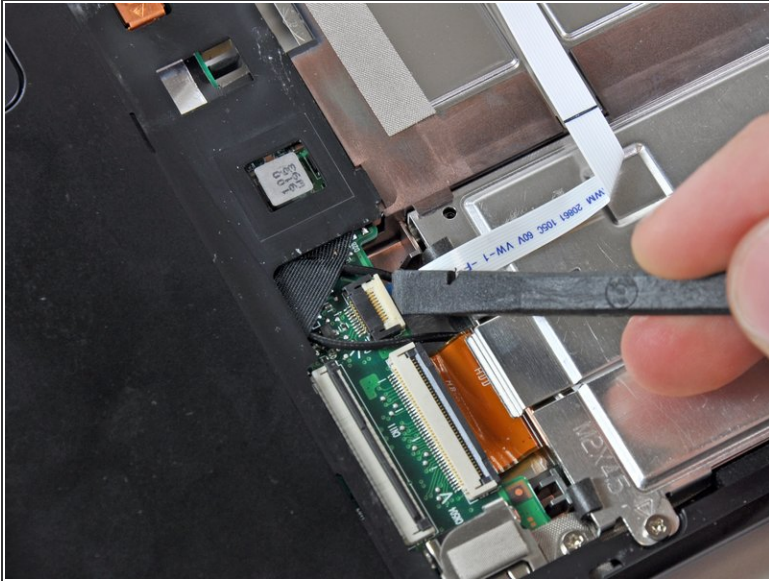
Internal Prerequisite.



TOOLS:

- [Spudger](#) (1)
 - [Phillips #00 Screwdriver](#) (1)
-

Step 1 — Hard Drive

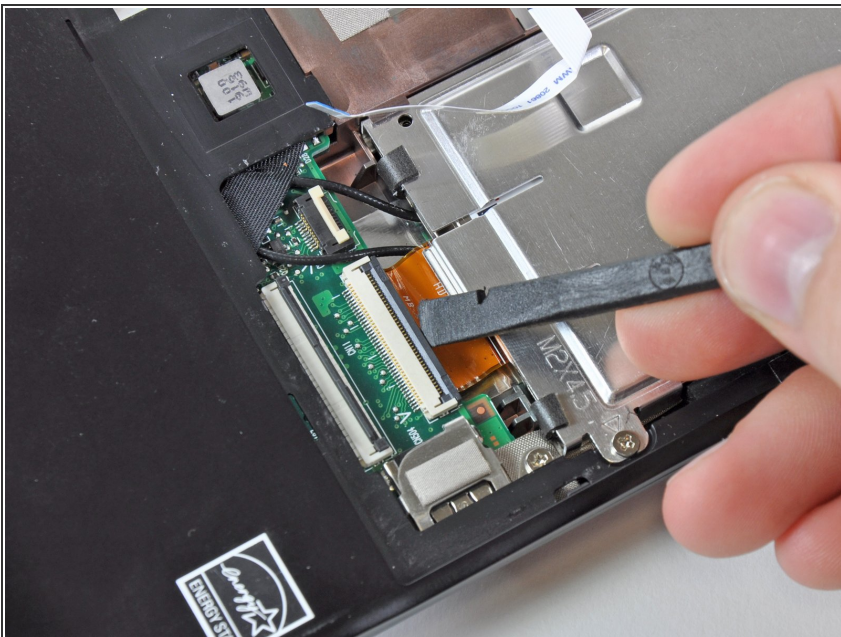


- Use your fingernail or the flat end of a spudger to flip up the retaining flap on the SIM card ribbon cable ZIF socket.

⚠ Be sure you are prying up on the retaining flap, **not** the socket itself.

- Pull the SIM card ribbon cable out of its socket and peel it off the top of the hard drive enclosure.

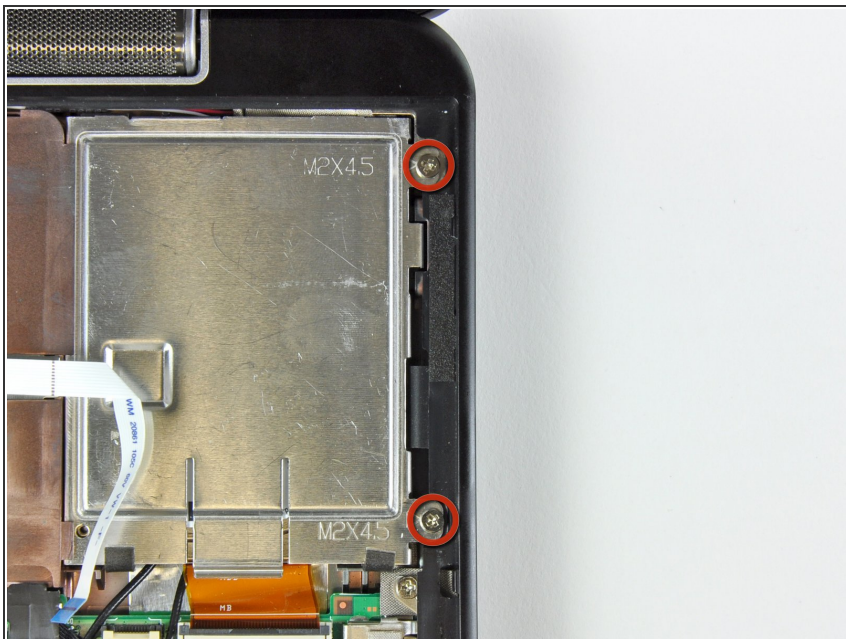
Step 2



- Use your fingernail or the flat end of a spudger to flip up the retaining flap on the hard drive cable ZIF socket.

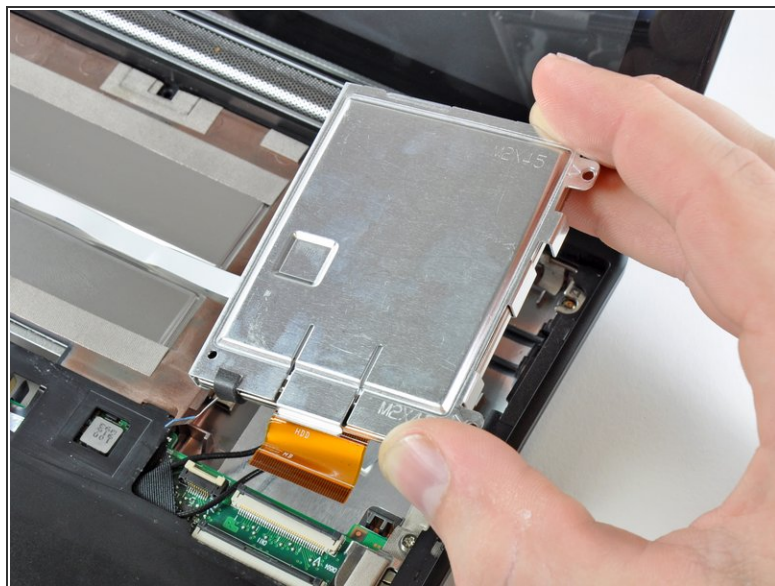
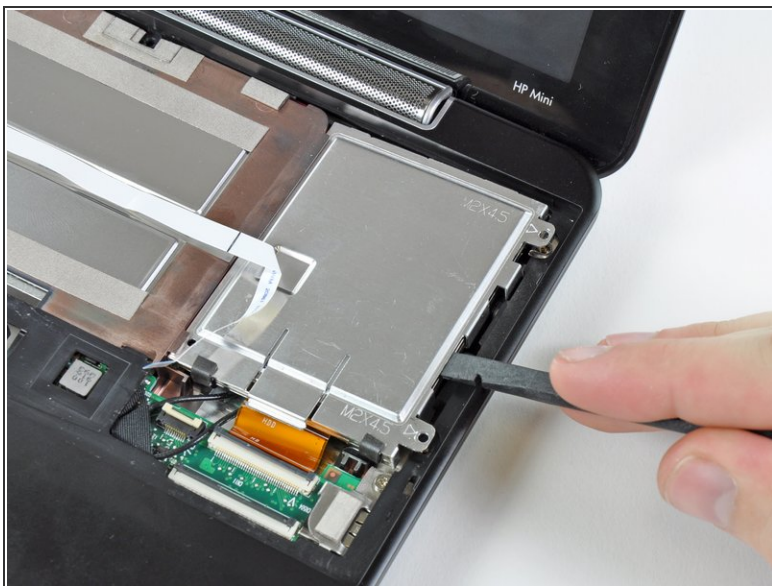
⚠ Be sure you are prying up on the retaining flap, **not** the socket itself.

Step 3



- Remove the two 4.5 mm Phillips screws securing the hard drive to the lower case.

Step 4



- Lift the hard drive up and out of the lower case, being careful not to damage its cable in the process.

To reassemble your device, follow these instructions in reverse order.

This document was generated on 2020-11-28 02:05:34 AM (MST).

