



Samsung Galaxy Tab 3 8.0 Display Assembly - Touch screen & LCD Display Replacement

Samsung Galaxy Tab 3 8.0 Display Assembly - Touch screen & LCD Display Replacement

Written By: ZFix



INTRODUCTION

If your tablet has a broken touch screen glass (digitizer), LCD display or you want to chang the micro USB charging port, loudspeakers, audio jack connector, etc., with this guide we will help you to do it.

[video: <https://www.youtube.com/watch?v=AIM2zFZIXJ0>]



TOOLS:

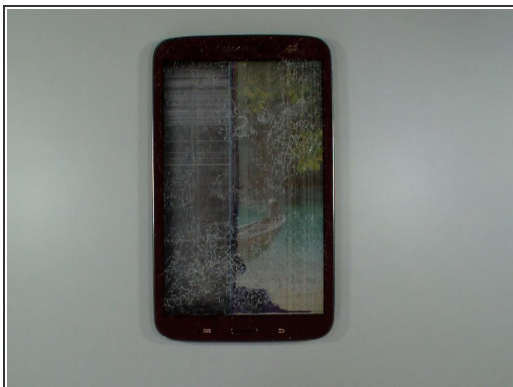
- [Phillips #0 Screwdriver](#) (1)
- [iFixit Opening Tools](#) (1)
- [Spudger](#) (1)
- [Tweezers](#) (1)
- [adhesive tape 3 mm](#) (1)
- [Heat Gun](#) (1)



PARTS:

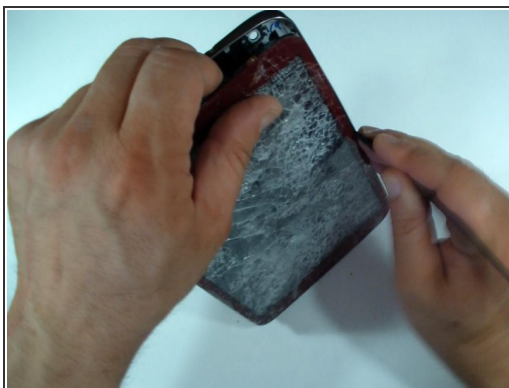
- [Galaxy Tab 3 8.0 Screen](#) (1)

Step 1 — Display Assembly - Touch screen & LCD Display



- Put the scotch tape in order not to scatter pieces of glass.
- Remove any memory card and SIM card (if the tablet is 3G version).

Step 2 — Battery / Back Cover




- Using plastic tools remove the back / battery cover.

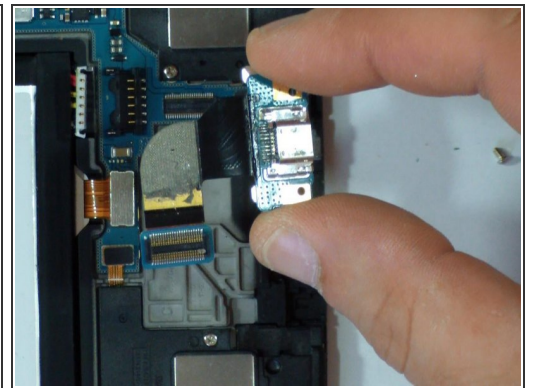
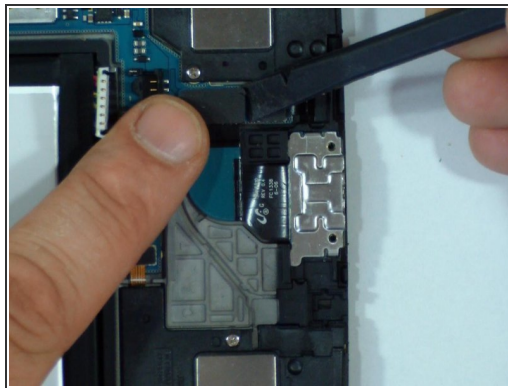
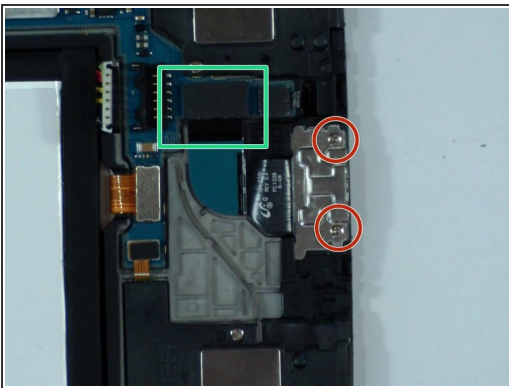
⚠ Be careful with the Power and Volume buttons.

Step 3



 Before doing anything, disconnect the battery.

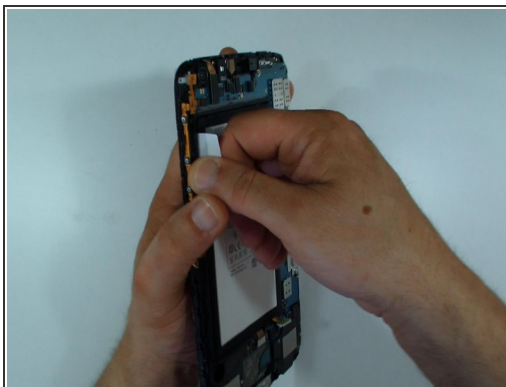
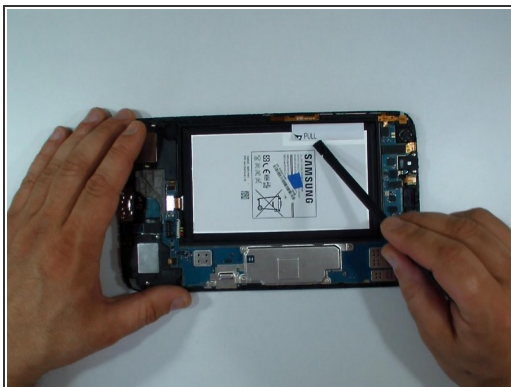
Step 4 — Micro USB Charging Port / Dock with Flex Cable



 This step is only if you want to replace the micro USB port flex cable.

- Remove the two screws and disconnect the charging port flex cable from the main board.
- Use a plastic tool to unstick the flex cable from the middle frame.

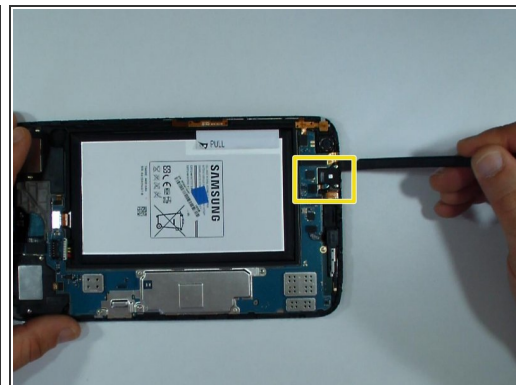
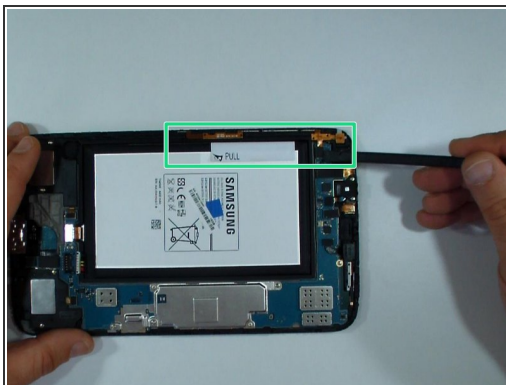
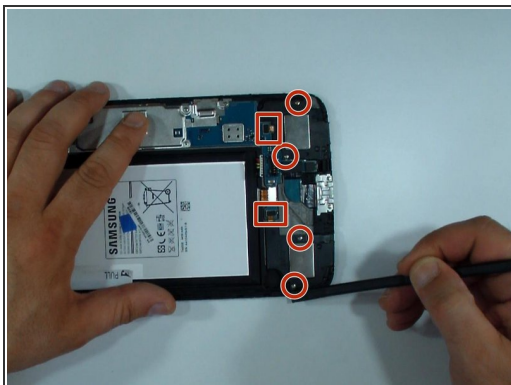
Step 5 — Battery



⚠ This step is for only if you want to change the battery.

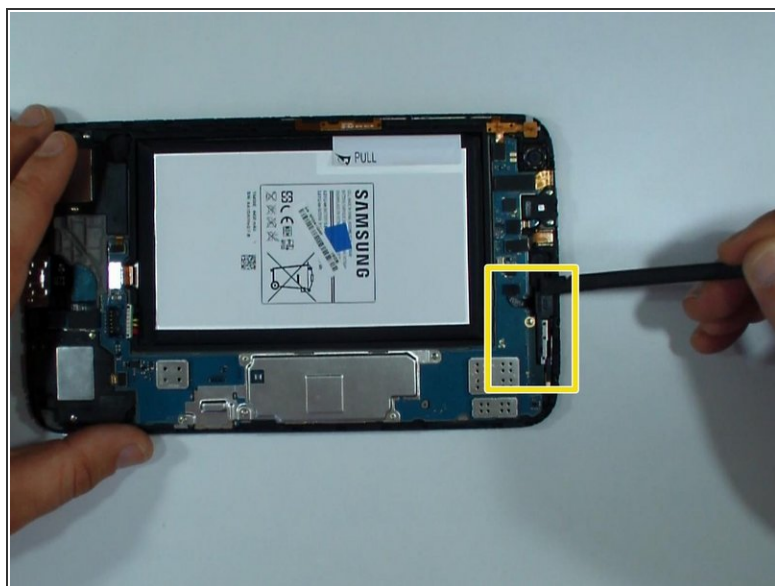
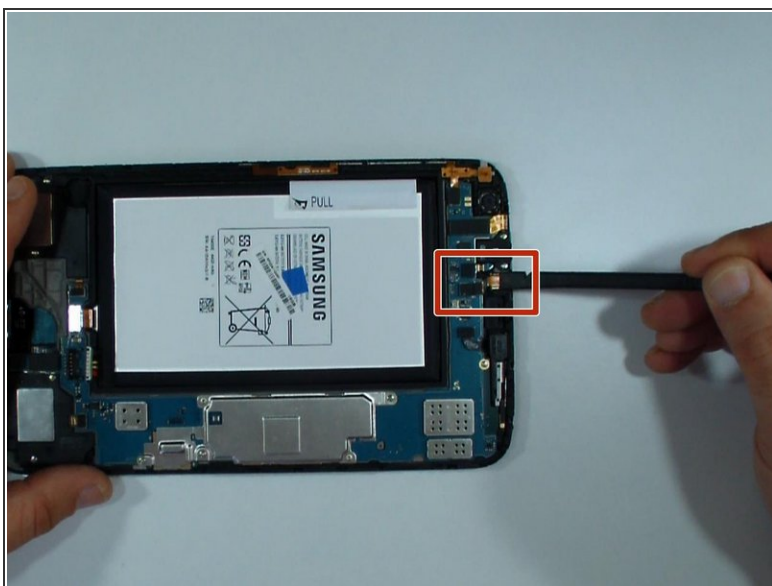
- The battery is stuck to the middle panel.
- Use the white sticker to remove it.

Step 6 — Components 1



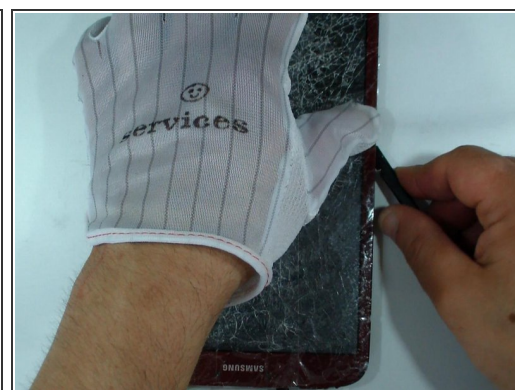
- 2x loudspeakers
- Power & Volume buttons flex cable
- Audio jack flex cable

Step 7 — Components 2



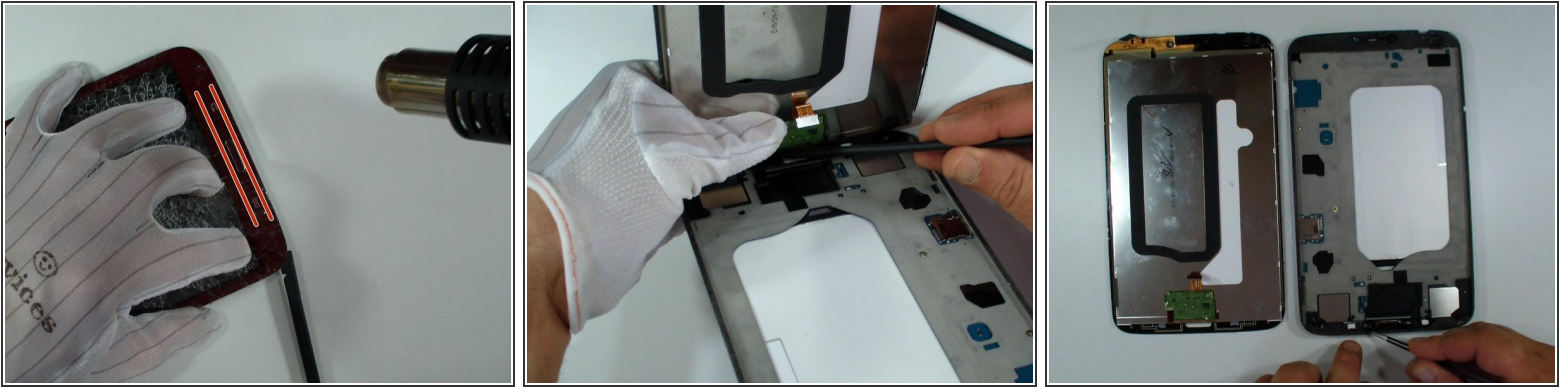
- Front camera
- Wi-Fi antenna

Step 8



- Use a heat gun or hair dryer and warm the touch screen glass. This will make the adhesive more flexible and the separation easier.
- ⚠ Use a gloves to avoid any injurys from glass.
- ⚠ Do not rush.

Step 9



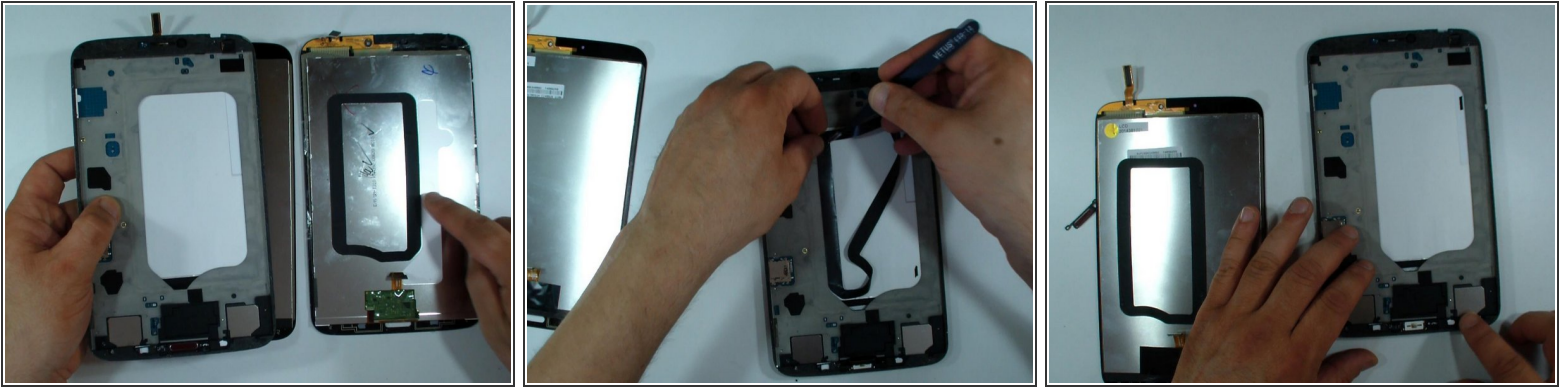
- Beware for the menu buttons flex cable.

Step 10



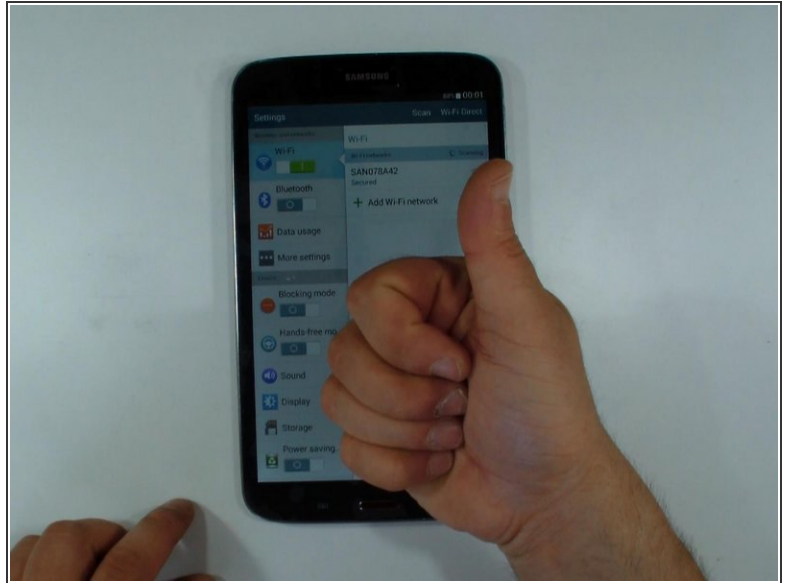
- Always test the new spare part before final installation.

Step 11



- Transfer the black tape from the old display. It keeps the distance the display from the battery and protects it from overheat.
- If the adhesive tape is not in good condition you must install a new one.

Step 12



- Start with reassembling.
- .
- .
- .
- .
- .
- .
- **Did you do it successfully.**

To reassemble your device, follow these instructions in reverse order.