



Sega Genesis II Teardown

This is a Sega Genesis model 2. In this tear down you will be able to see what the inside of the Sega Genesis should look like.

Written By: Thor Odinson



INTRODUCTION

This is a Sega Genesis model 2. In this tear down you will be able to see what the inside of the Sega Genesis should look like.

TOOLS:

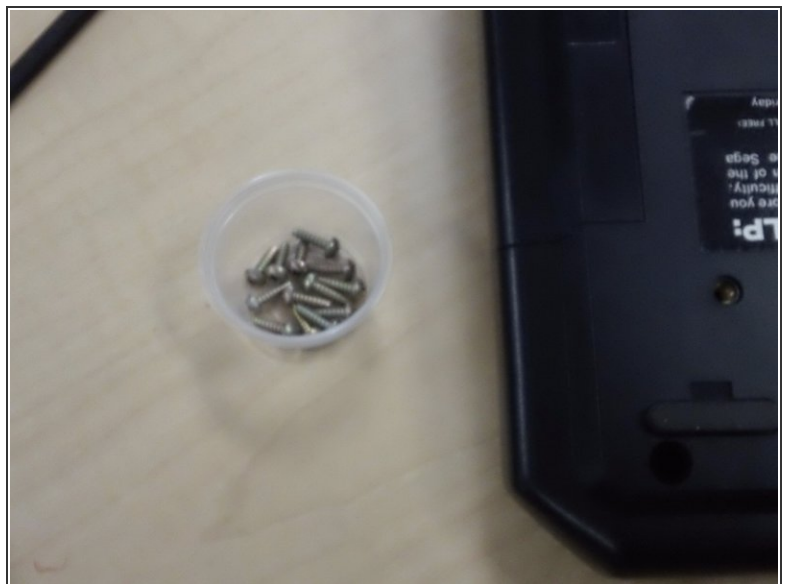
- [Essential Electronics Toolkit](#) (1)
-

Step 1 — Sega Genesis II Teardown



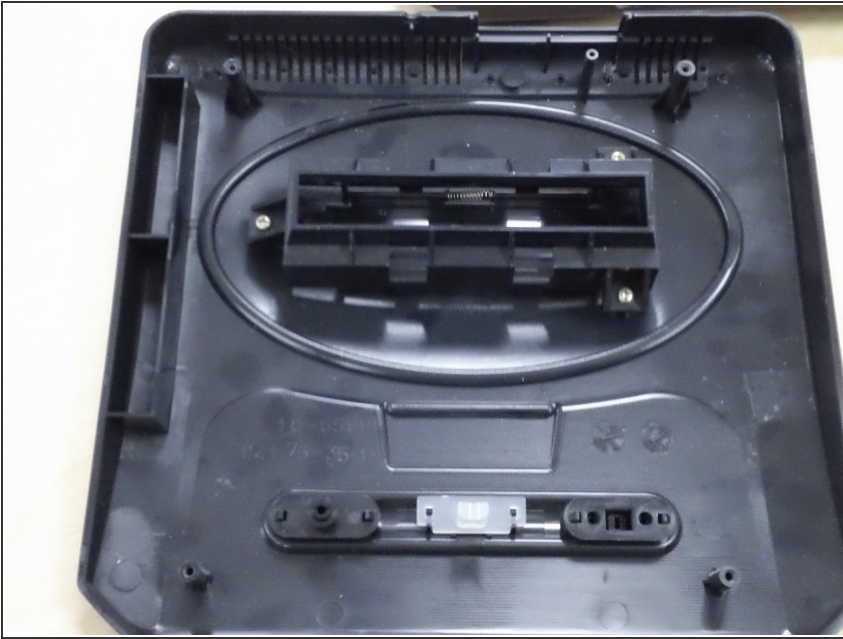
- Flip the system over

Step 2 — Removing the Screws



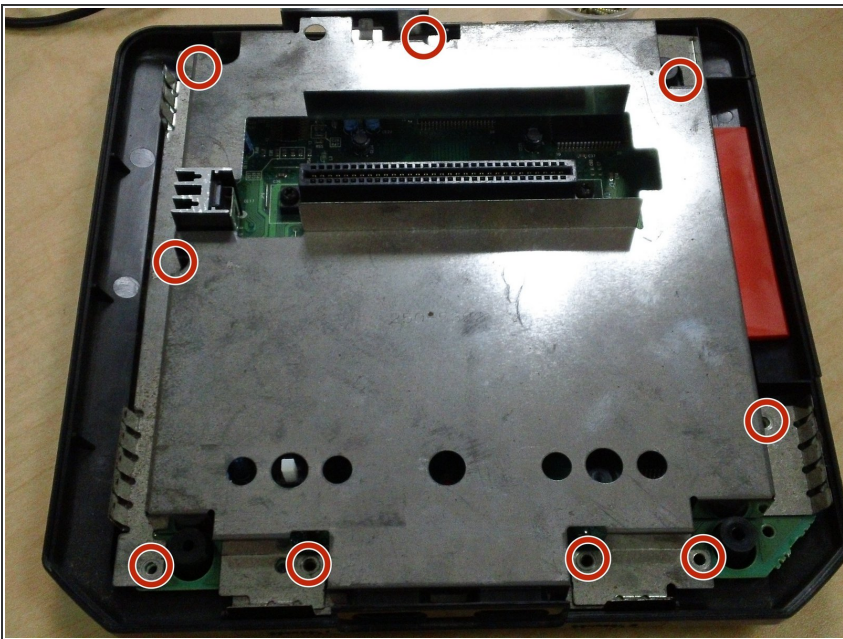
- Remove the four outer screws (you may want a small cup to keep your screws in.)

Step 3



- Take plastic top off.

Step 4 — Removing the Screws



- Remove the nine inner screws.

Step 5



- Remove metal piece.

Step 6



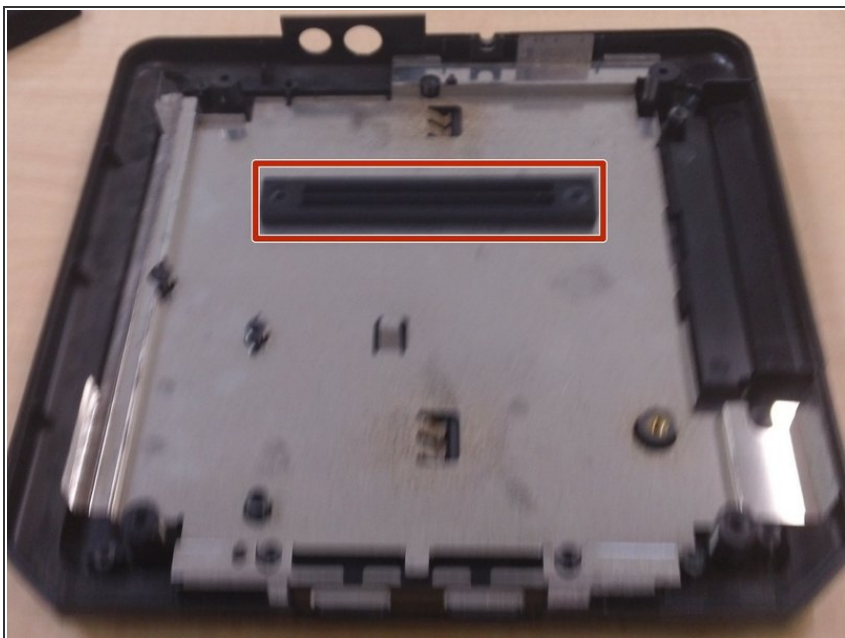
- You now have access to your circuit board. (If you wish to remove the circuit board, continue.)

Step 7



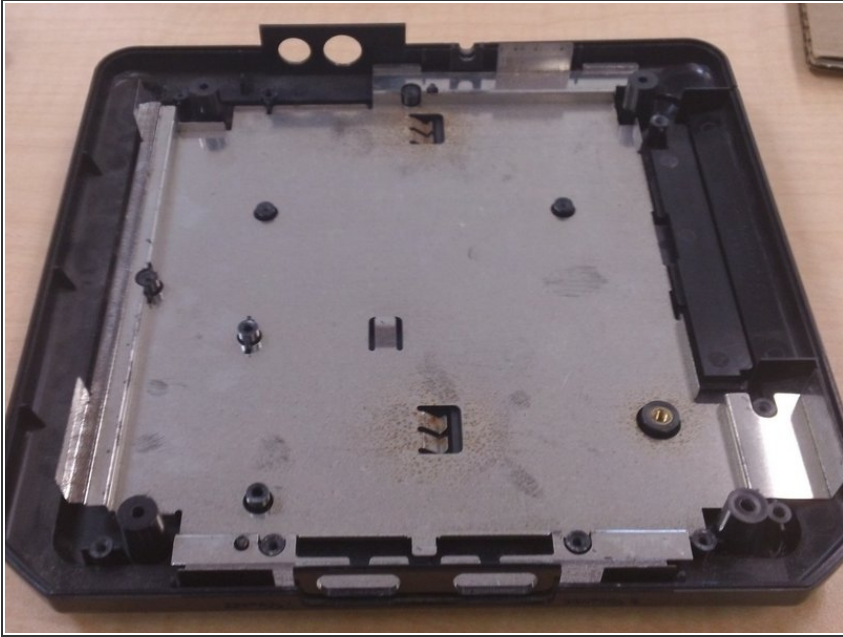
- Remove the two screws highlighted in picture to remove the circuit board.

Step 8



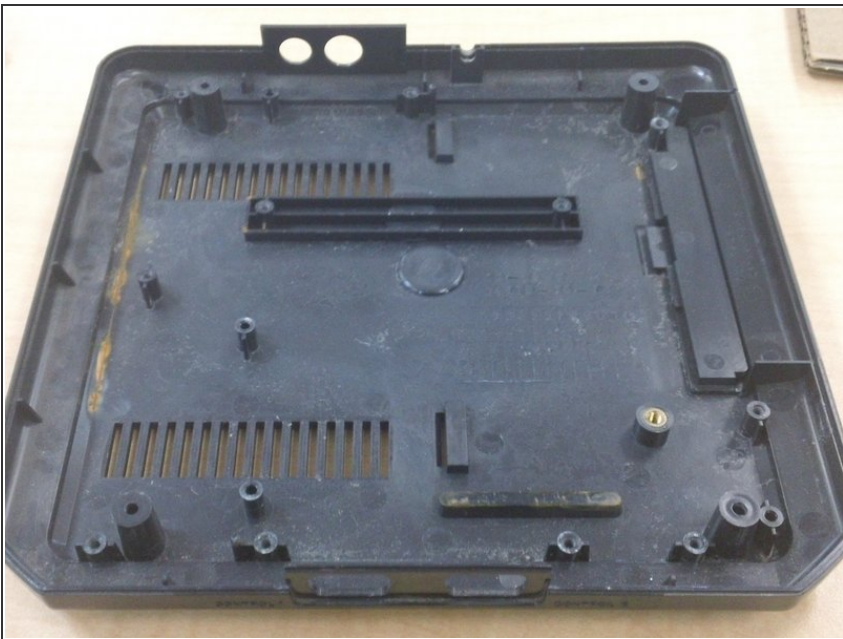
- Lift the black piece of plastic up.

Step 9



- Lift up the metal piece.

Step 10



- You now have access to the inside of the bottom plastic piece.

Step 11 — Circuit Board



- This is the circuit board.

Step 12 — Reassemble



- Do the steps backwards to reassemble.