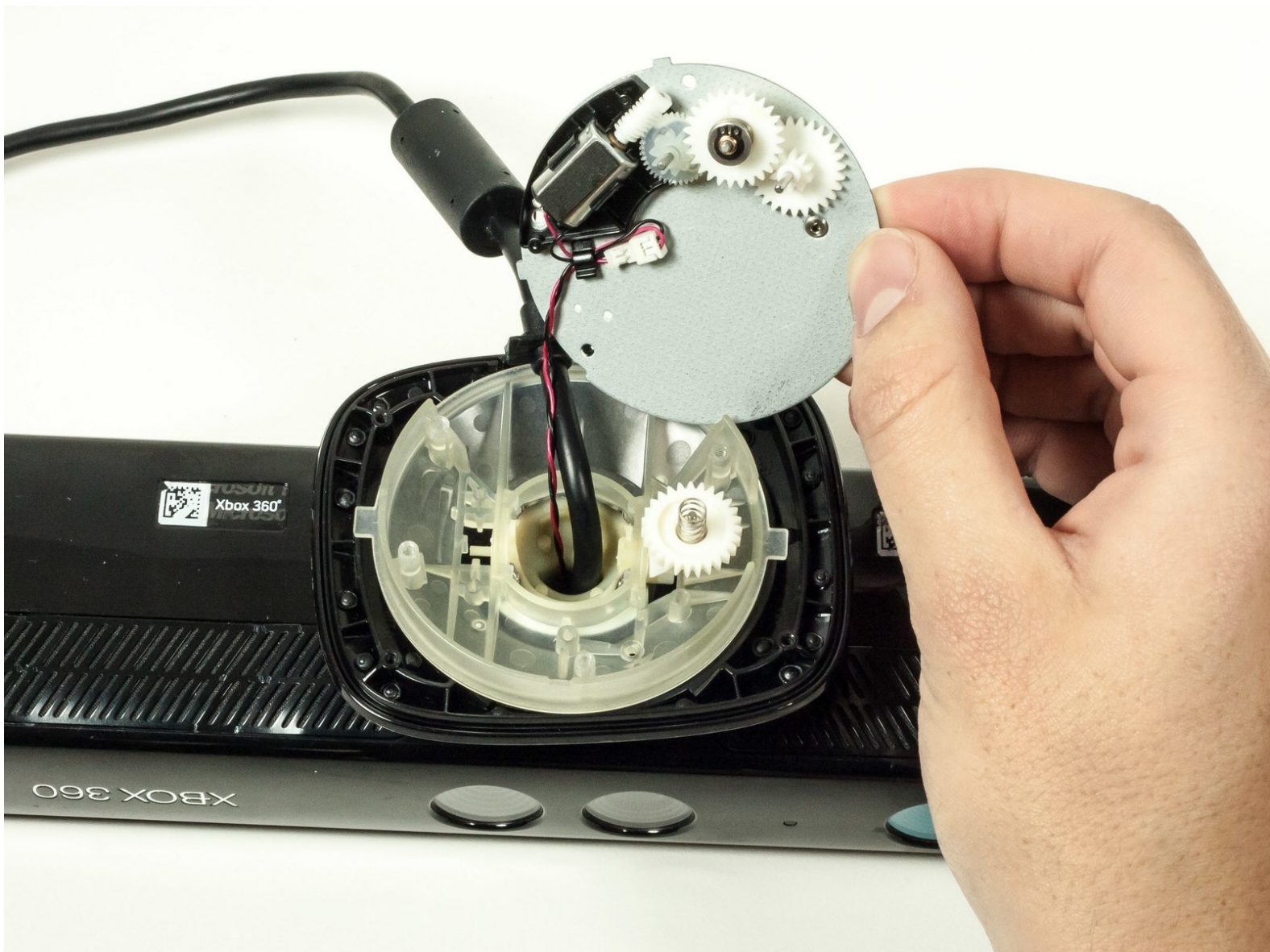




Microsoft Kinect Tilt Motor Replacement

This guide will teach you how to replace the motor and gears within the tilting mechanism of the Xbox 360 Kinect.

Written By: Daniel



INTRODUCTION

The tilting mechanism allows the Kinect to follow the player. It operates through a motor and several gears.



TOOLS:

- [T6 Torx Screwdriver](#) (1)
 - [Phillips #0 Screwdriver](#) (1)
 - [Phillips #00 Screwdriver](#) (1)
-

Step 1 — Tilt Motor



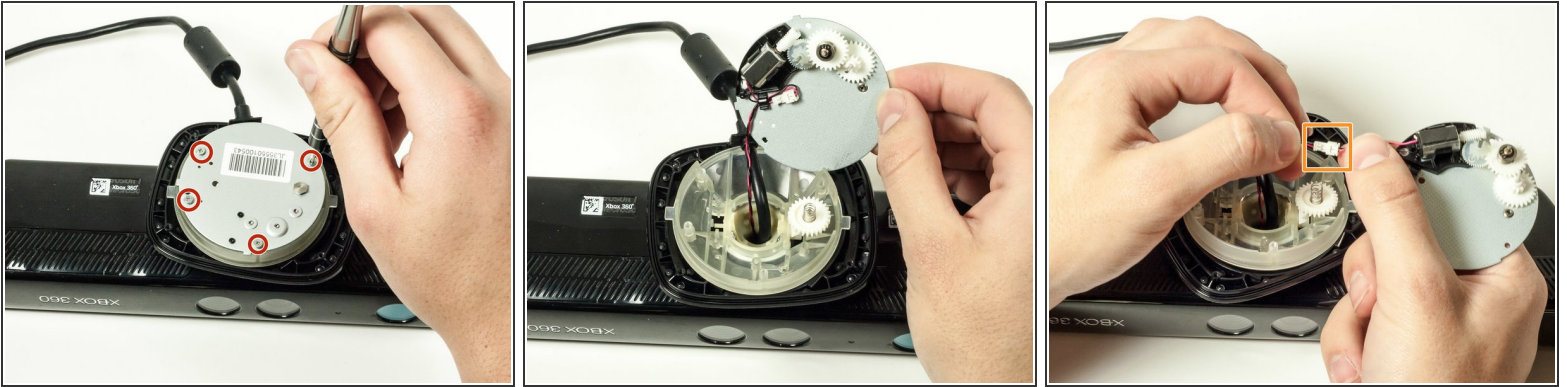
- Pull the rubber backing off the base of the Kinect.
- ❗ If the adhesive attaching the rubber backing and the base doesn't come off with the rubber backing, remove the adhesive as well.
- ❗ If the adhesive comes off separately, you may use some type of adhesive to reattach the rubber backing.

Step 2



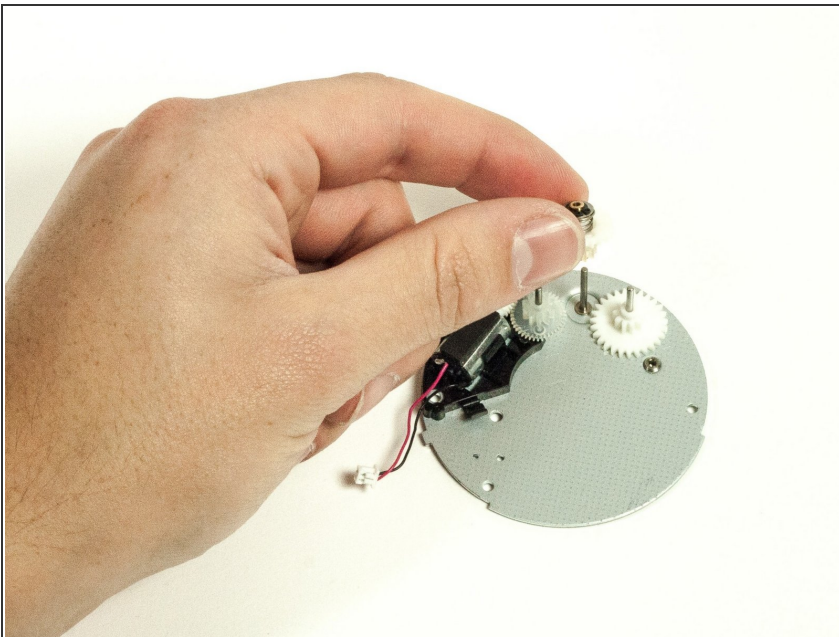
- Unscrew the four 7mm T6 Torx screws.
- Pull off the base to reveal the inner case.

Step 3



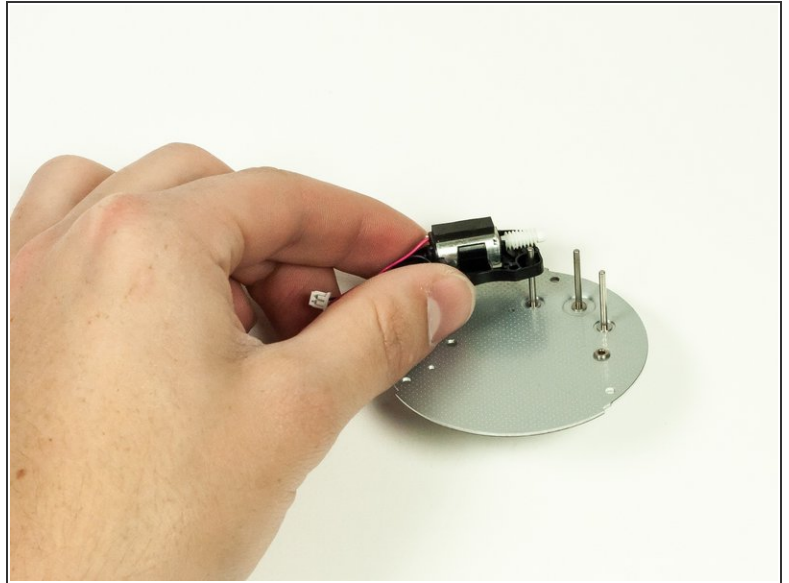
- Unscrew the four 5mm #0 Phillip screws.
⚠ These screws strip easily.
- Remove the metal plate to reveal the motor and gears.
- Disconnect the connector to separate the plate from the Kinect.

Step 4



- Remove the three gears on top of the motor, starting with the center gear.

Step 5



- Unscrew the four 5mm #00 Phillip screws.
- Remove the motor from the plate to replace.

To reassemble your device, follow these instructions in reverse order.