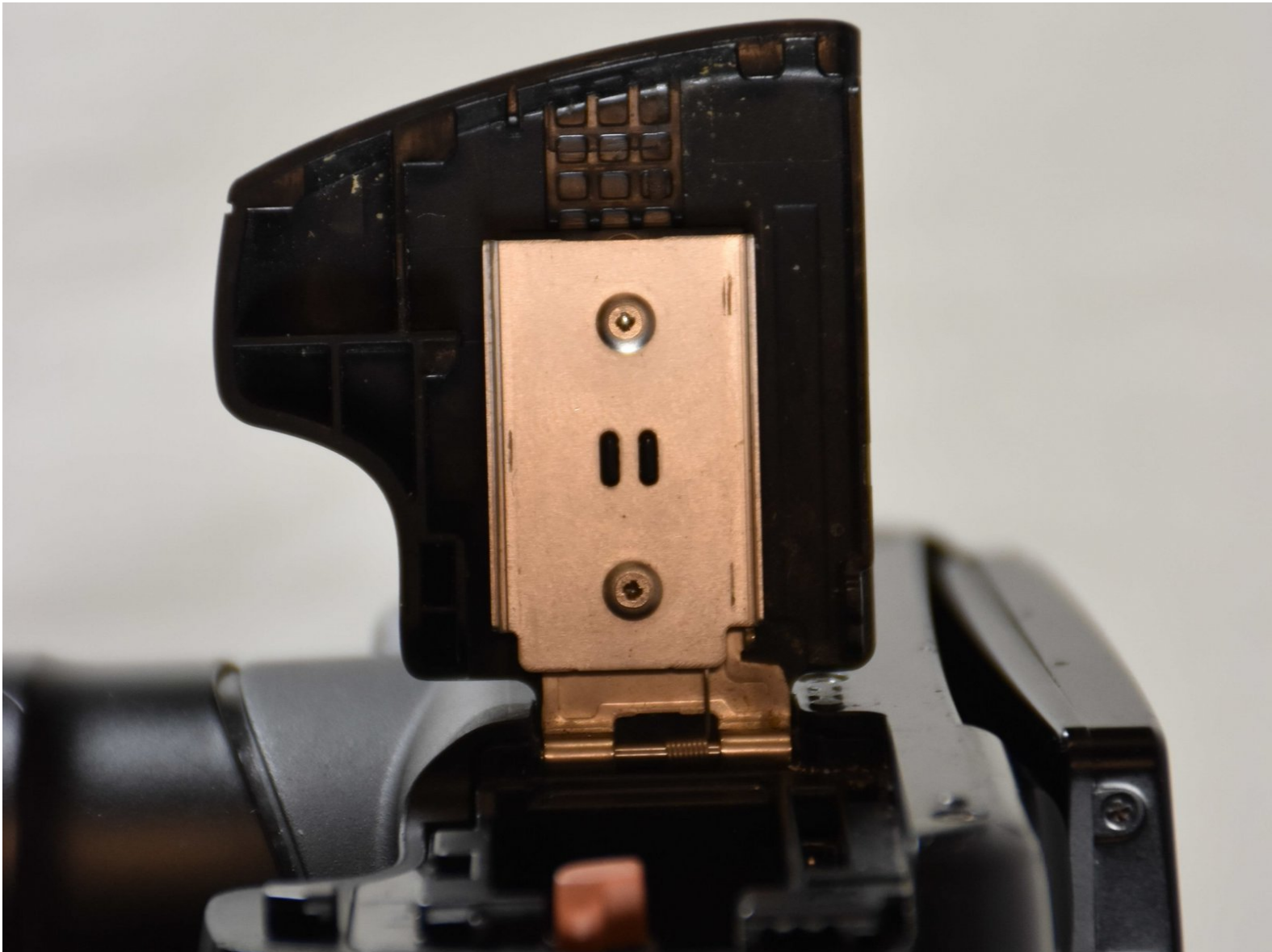




# Canon Powershot SX30 IS Battery/SD Card Door Replacement

A Replacement guide for the Protective Hinge on the bottom of the camera.

Written By: Ellis DeVoe

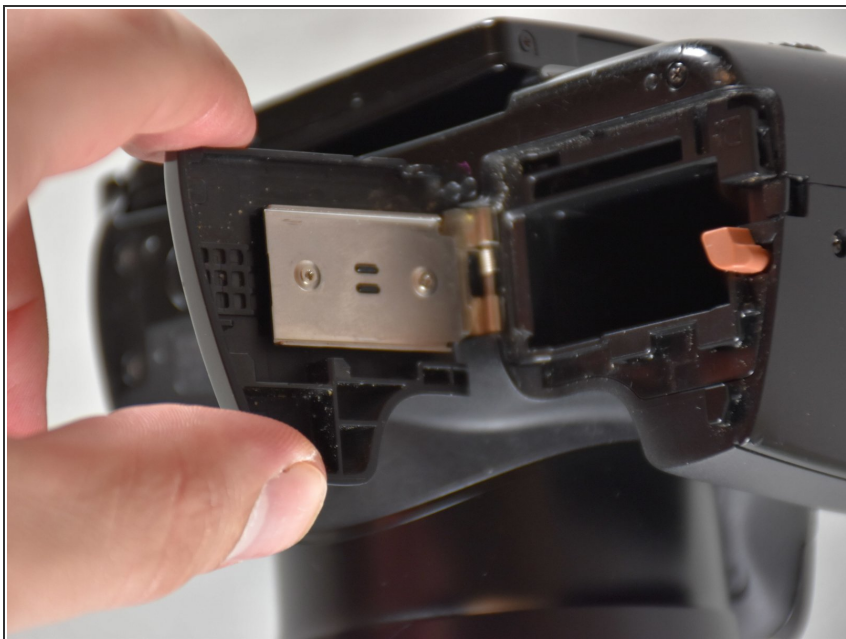




## TOOLS:

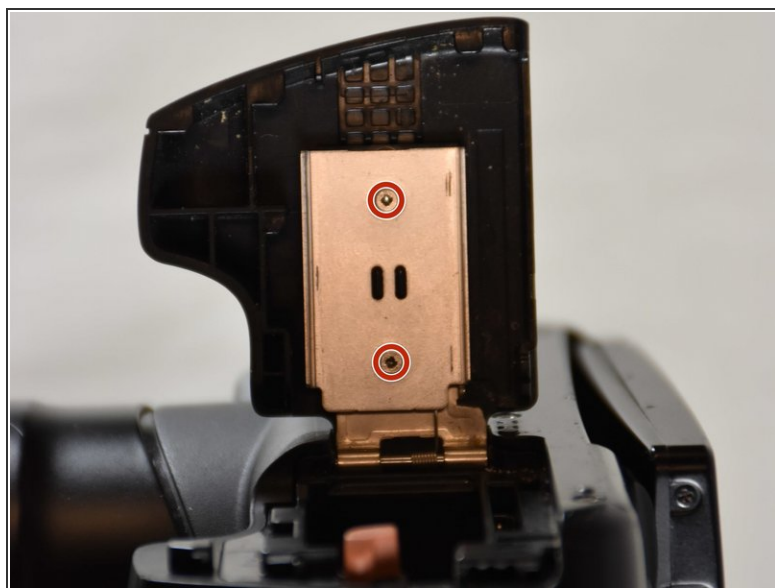
- [Phillips #00 Screwdriver](#) (1)
-

## Step 1 — Battery/SD Card Door



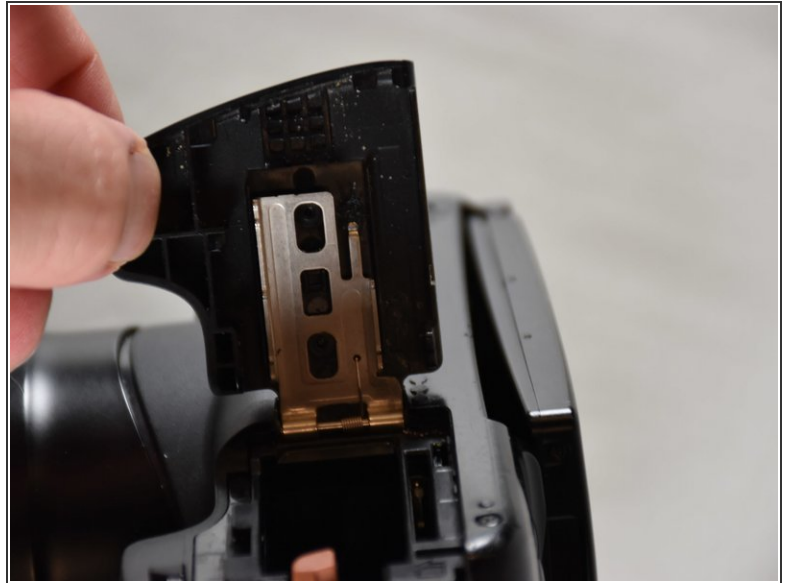
- Open the protective door on the bottom of the camera, and remove the SD card and battery from the camera

## Step 2



- Unscrew the two 2mm screws from the inside of the case

### Step 3



- Remove the plastic backing and the metal front plate from the spring controlled hinge
- To replace, hold the plastic backing to the metal hinge and screw the plate onto the front of it

That's It! Good Job!