



USB/Auxiliary Port

Written By: Noah Sadler



TOOLS:

Metal Spudger (1)

T6 Torx Screwdriver (1)

Step 1 — Outer Case




- Using the standard metal spudger, begin by prying at the bottom of the plain rubber end cap (the end without the USB or auxiliary input).

Step 2



- Continue prying around the end panel, prying at different points until the entire panel is out of its seating.
- Carefully remove the end panel.
- ① The tabs which connect the panel are on the short sides.

 **WARNING:** you will likely cause cosmetic damage to the end cap.

Step 3



- Slide out the rubber foot located on the bottom of the case.

Step 4



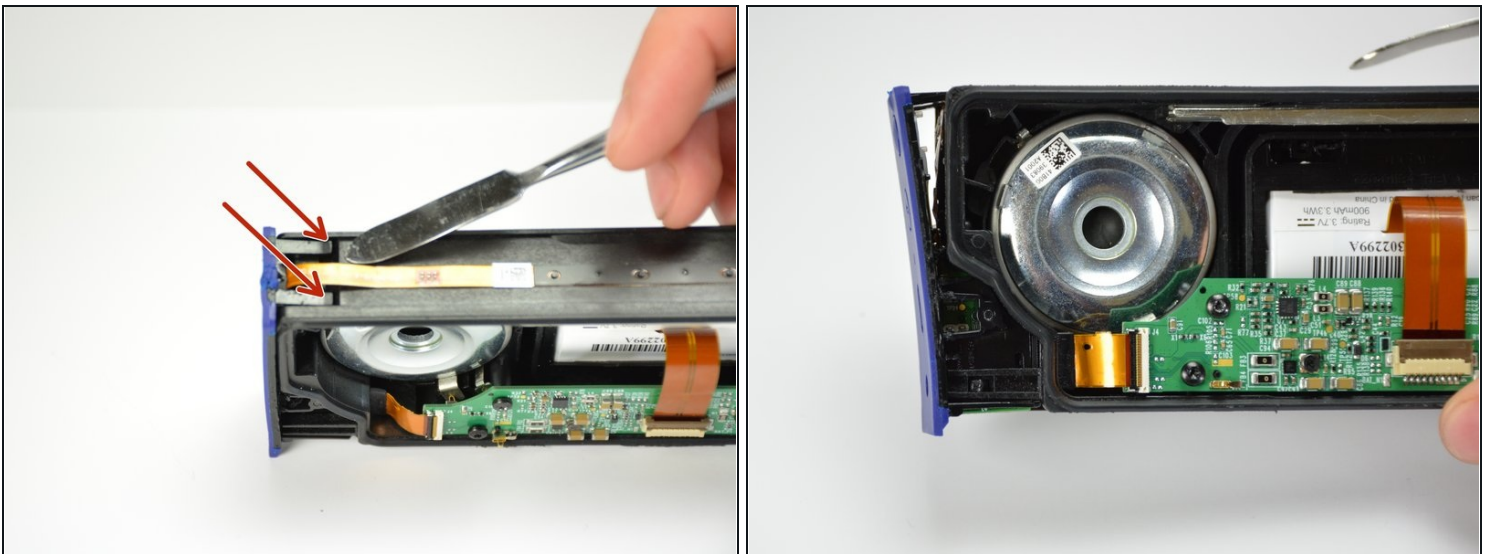
- Using a T6 bit, remove the flat topped 5mm screw located on the bottom of the casing, underneath the rubber foot.
- ☑ This is the only flat topped screw in the speaker, so keep track of which one it is.

Step 5



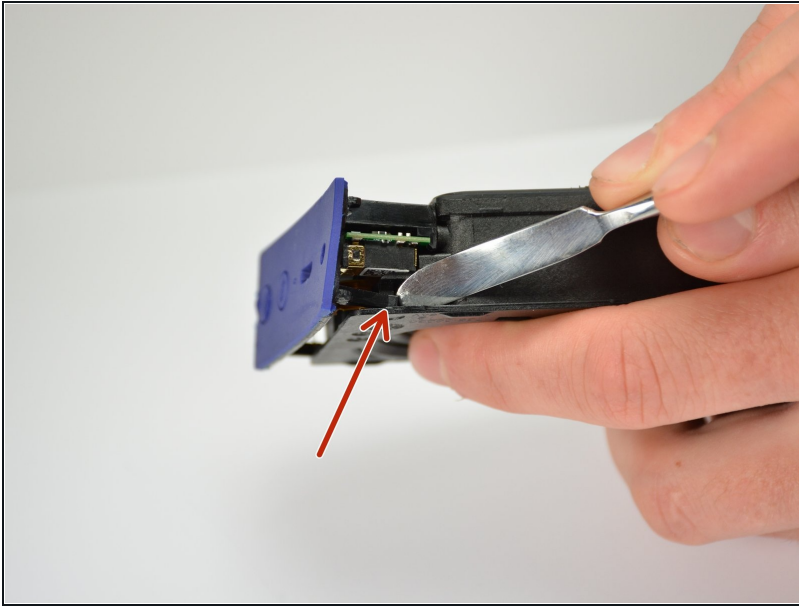
- Push against the side without end cap to slide the internal components out of the case.
- While holding the metal outset casing with one hand, press on the black inner plastic casing with your thumb.
- ⓘ It will be very difficult the first time. There is a rubber seal on the outside of the plastic inner case that creates a lot of friction with the metal outer case.

Step 6 — USB/Auxiliary Port



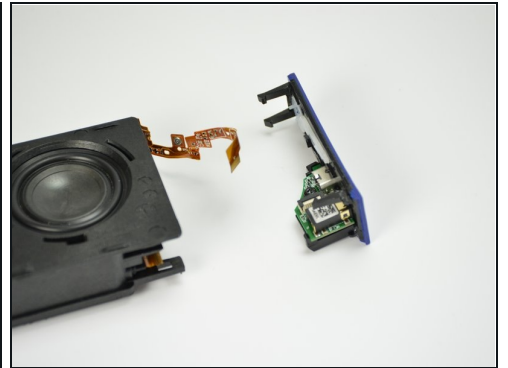
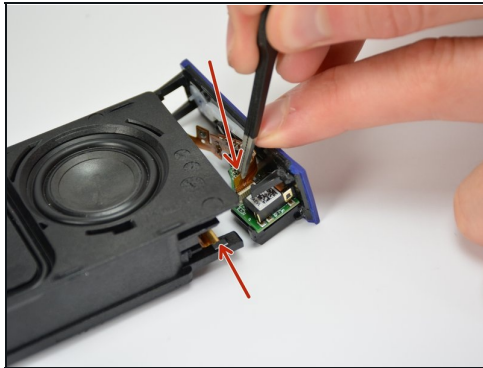
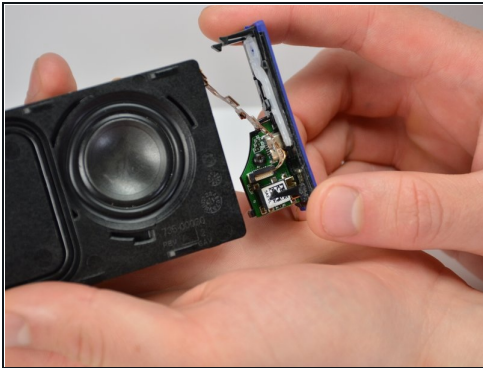
- Using the standard metal spudger, carefully pry up the top 2 plastic tabs which hold the exterior button and port cover onto the interior plastic frame.

Step 7



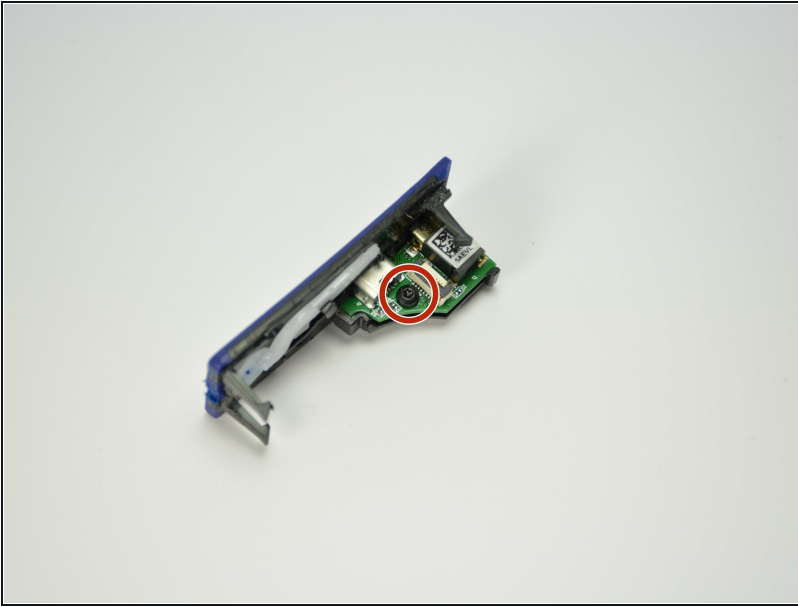
- Using the classic metal spudger, pry up the bottom 2 tabs attaching the other side of the button panel.
- ① It should come off after prying up the first tab.

Step 8



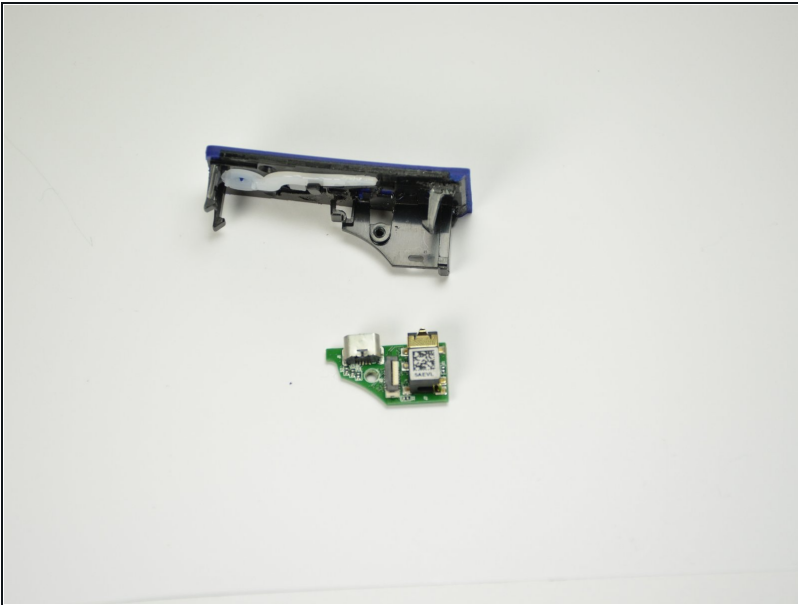
- Carefully lift out the end panel.
- Unplug both the connection ribbon and the ZIF ribbon using [tweezers](#) or your hands.
- ① There is a bit of glue to hold the connection ribbon down.

Step 9



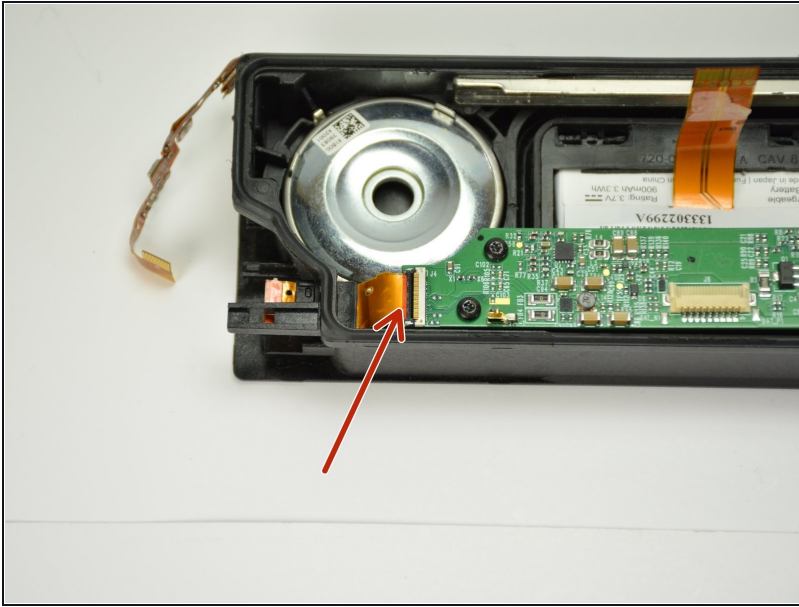
- Remove the 5mm T6 screw holding the port assembly onto the end cap.
- ⓘ Unlike the flat top screw holding the metal housing, these screws are roundtop.

Step 10



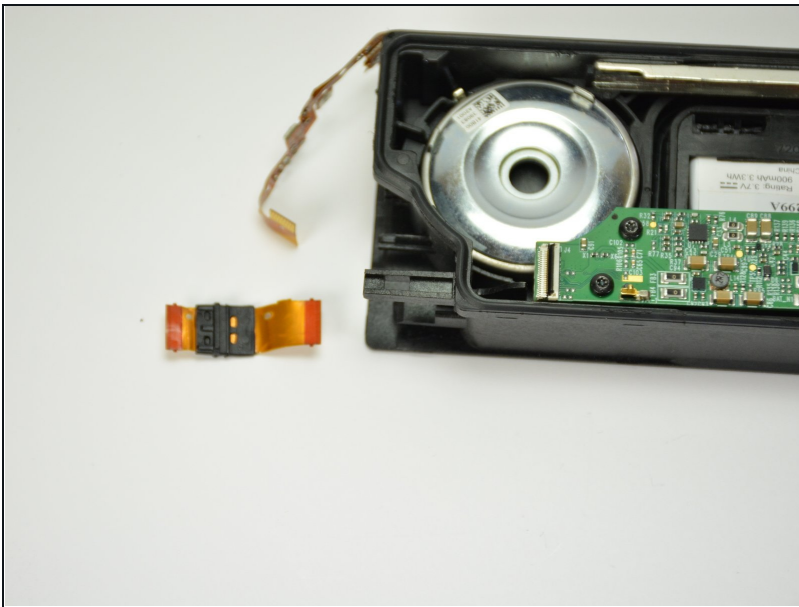
- Remove the old port assembly from the end cap.
- ★ Alternate Reassembly required, read on.

Step 11



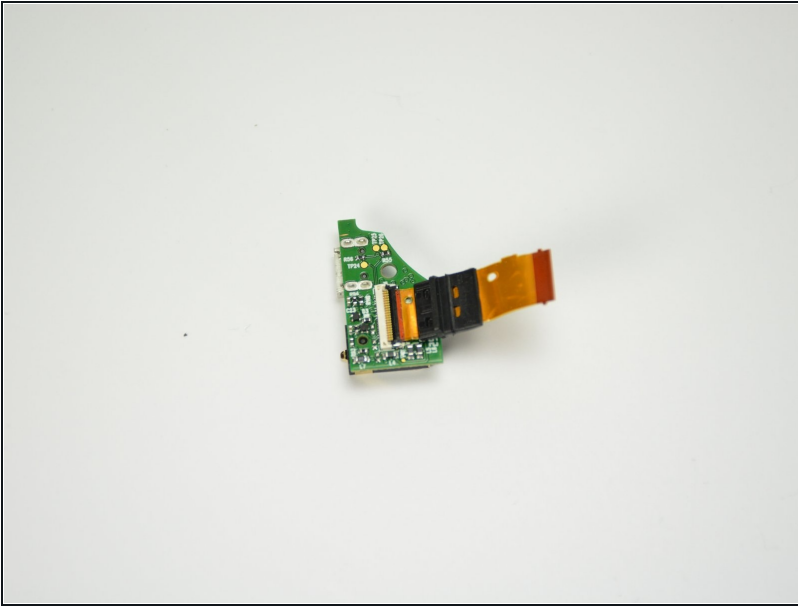
- Disconnect the Motherboard connection ribbon from the motherboard.
- ⓘ The ribbon should no longer be connected at either end.

Step 12



- Very carefully pull the motherboard connection ribbon through the plastic casing, removing it from the plastic casing.

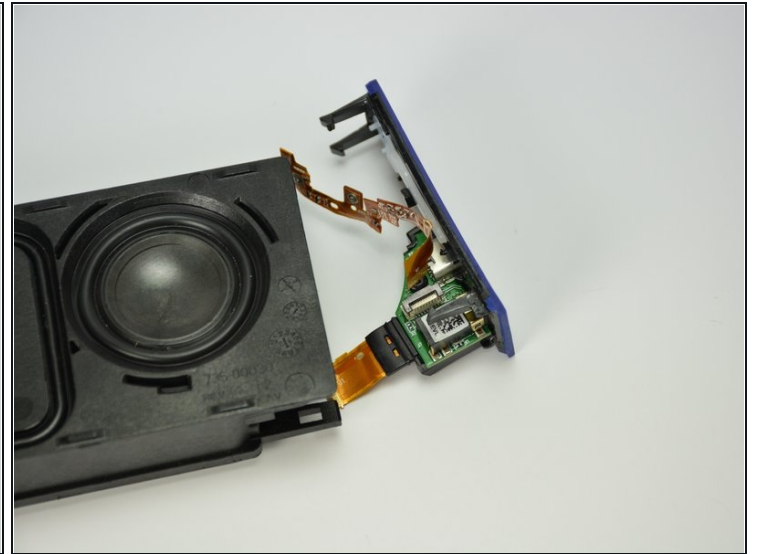
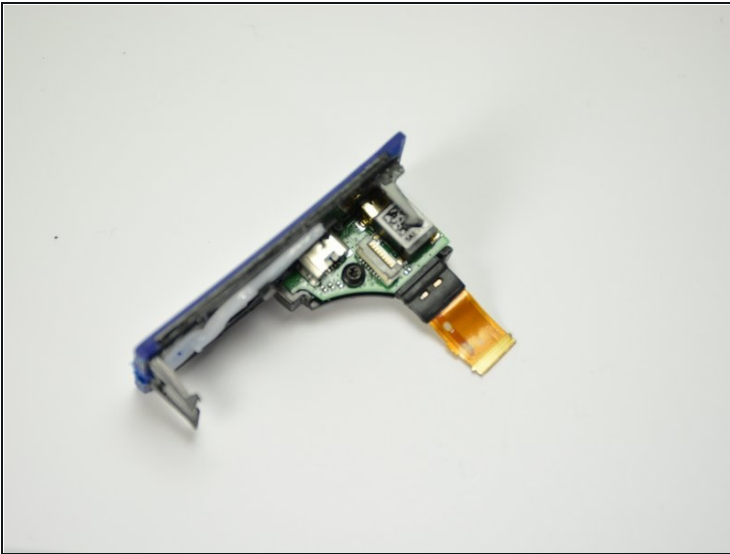
Step 13



- Insert the connection ribbon into its ZIF connection port on the bottom of the new port assembly

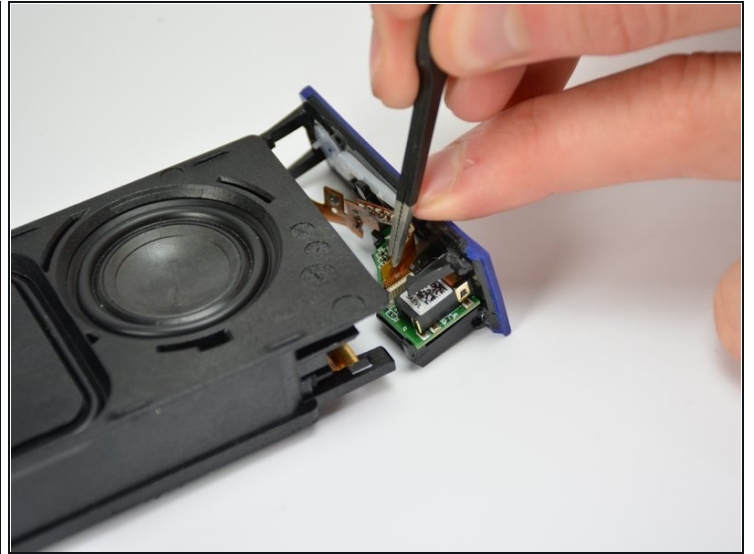
⚠ ZIF connectors are delicate and often give beginners trouble, search for ZIF connector tips on the web.

Step 14



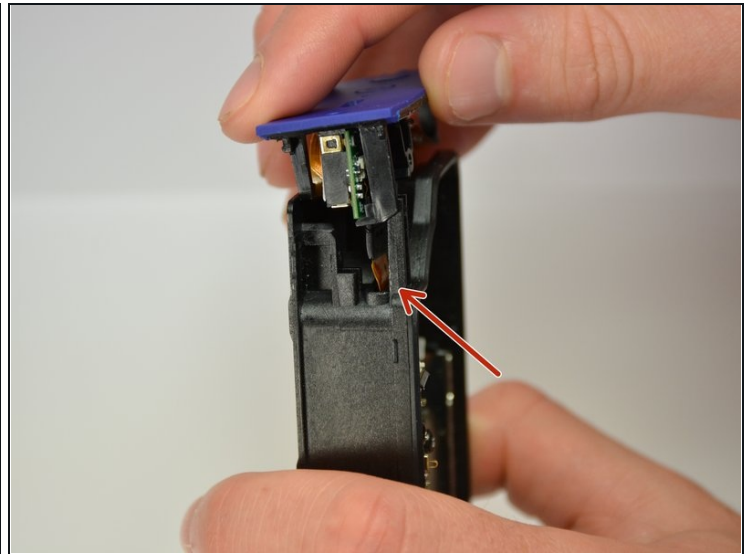
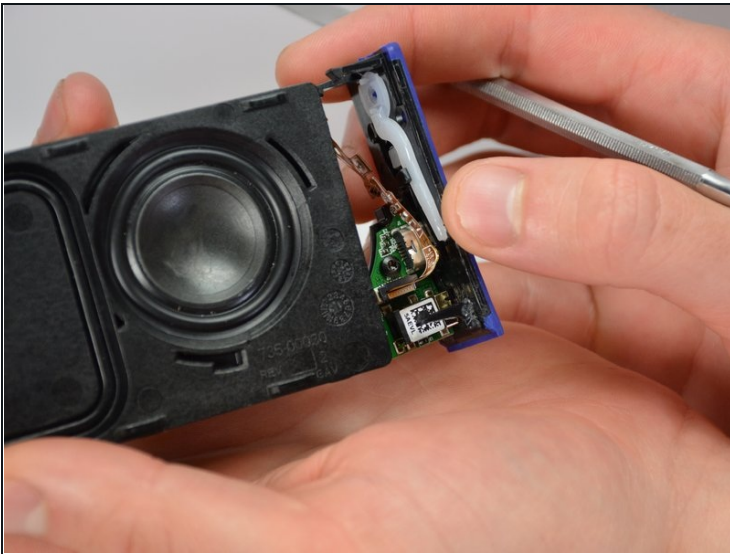
- Position the new port assembly on the end cap and reinsert the 5mm T6 screw.
- ⓘ The rubber insulation around the motherboard connector should help hold the ZIF connector in place after the screw has been reinserted.

Step 15



- Reconnect the button ribbon connector on the top of the port assembly.

Step 16



- Reconnect the endcap to the plastic housing.
- While you reconnect the endcap to the plastic housing, carefully position the ribbon slide through the ribbon slit and into the plastic casing.

Step 17



- Snap the end cap back onto the inner plastic casing and reconnect the ZIF ribbon to the motherboard.
- ★ Finish reassembling in descending order starting at step 5.

To reassemble your device, follow steps 1 through 5 in reverse order.