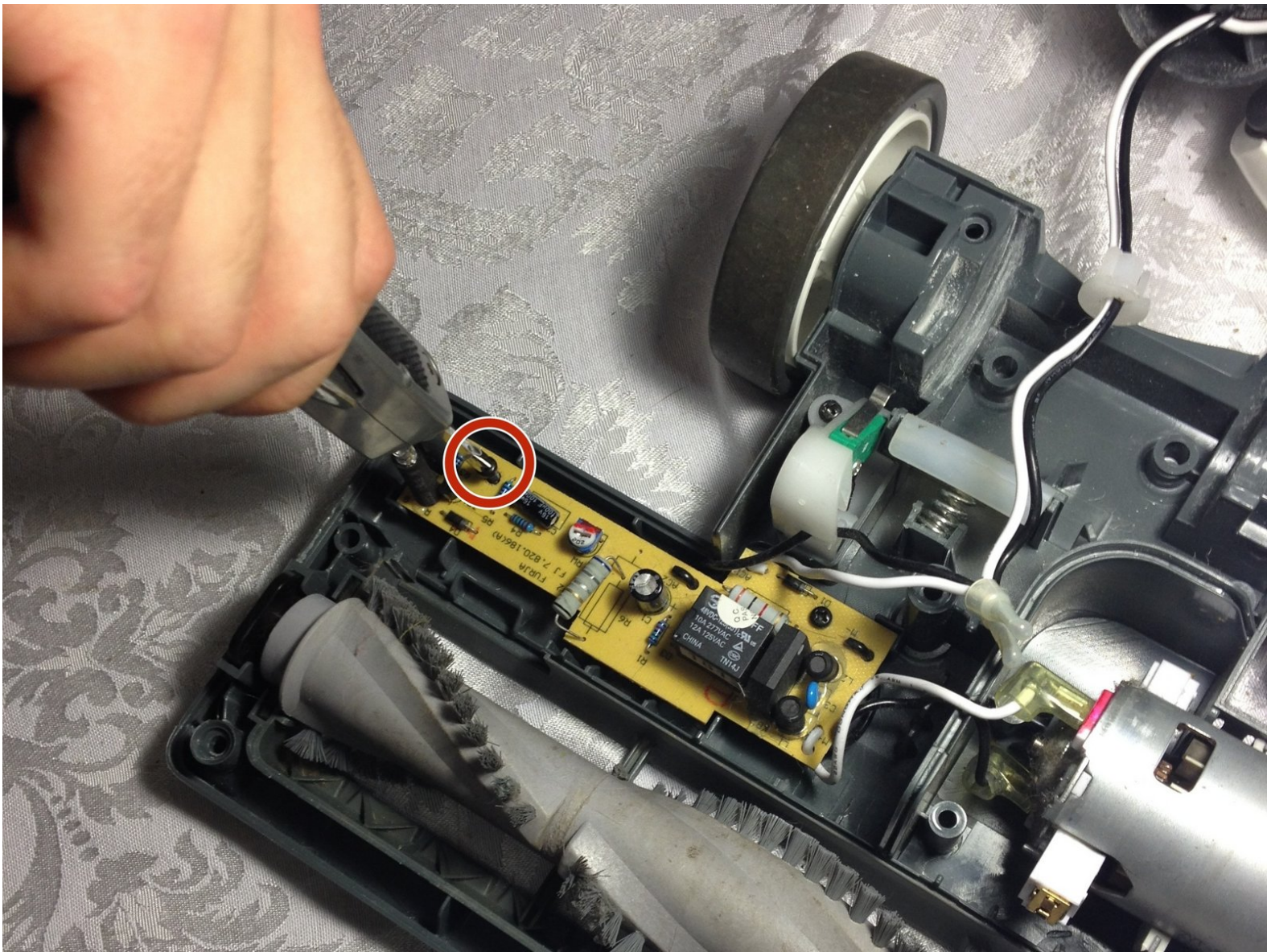




Shark Navigator Motherboard Replacement

This guide will instruct you on how to find and replace a broken circuit board in the vacuum.

Written By: Mara





TOOLS:

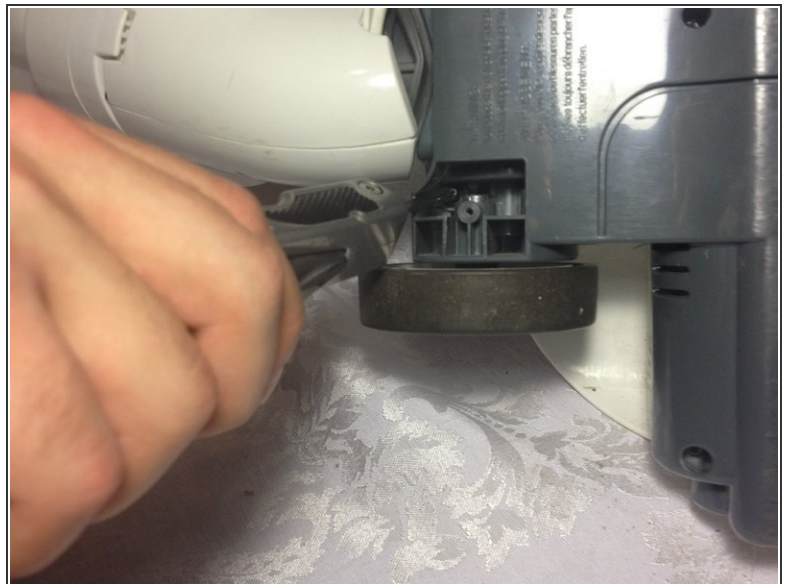
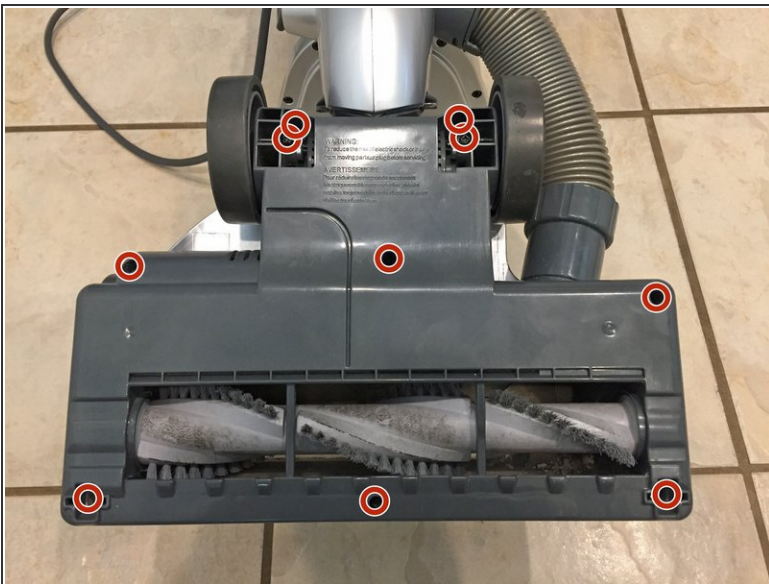
- [Spudger](#) (1)
 - [Phillips #1 Screwdriver](#) (1)
-

Step 1 — Roller Brush Compartment



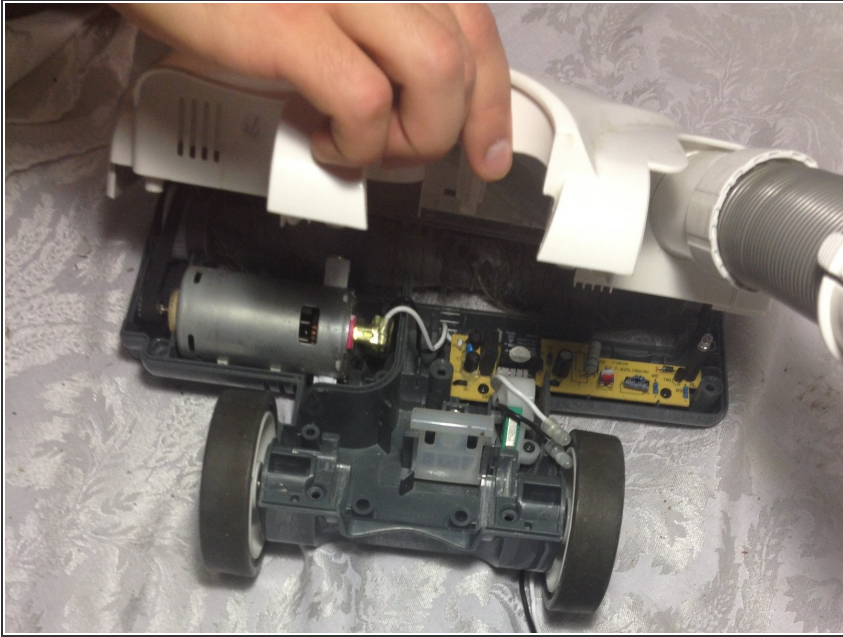
- Pop out the two small wheels located on the front end of the bottom of the roller brush compartment.

Step 2



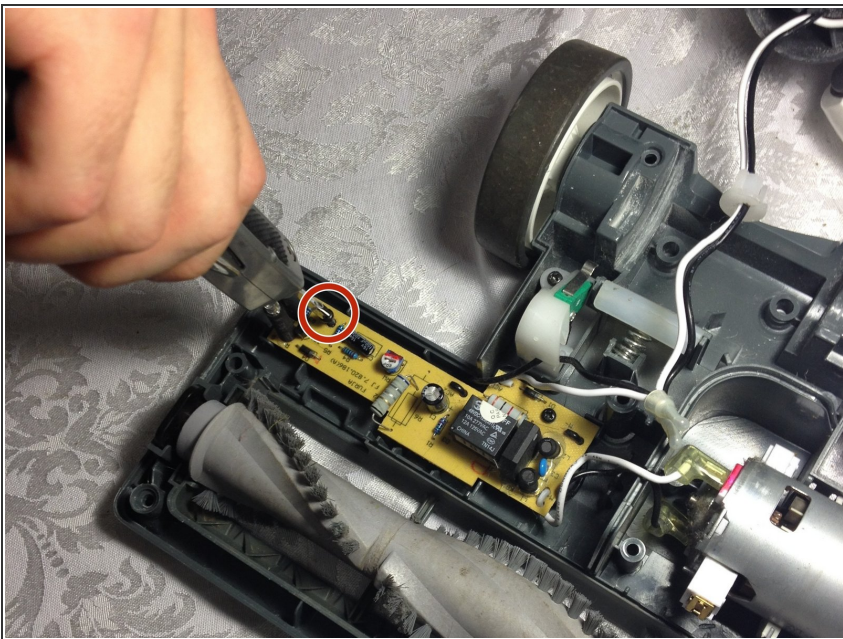
- Remove the 10 Phillips screws located on the bottom of the roller brush compartment. (Two of these screws are located under the wheels from the previous step.)
 - ☑ The screws have varying lengths, so keep track of where each one goes for reassembly.

Step 3



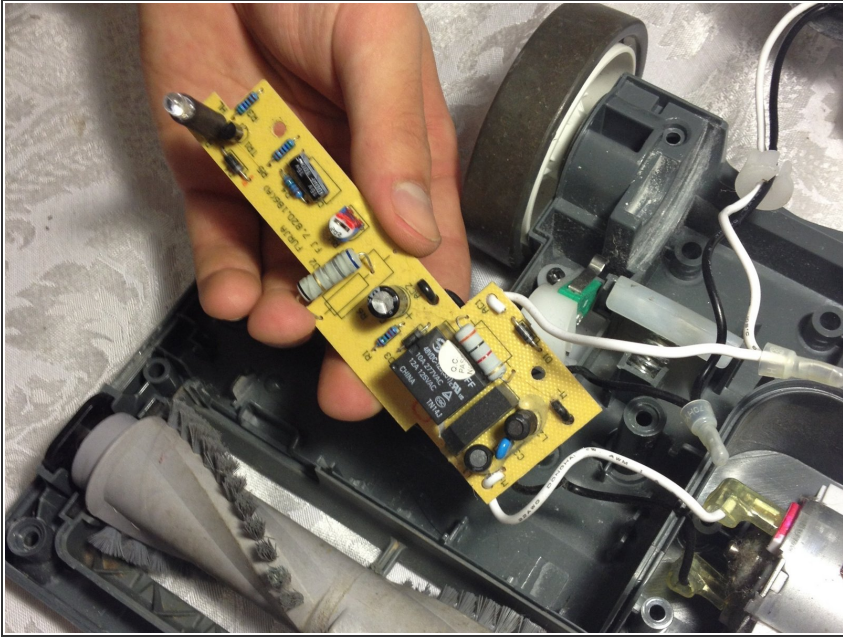
- Remove the white plastic cover to expose the roller compartment underneath.

Step 4 — Motherboard



- There is one screw at the edge of the circuit board. Unscrew the circuit board before attempting to take it out.

Step 5



- Take out the circuit board and replace with a new one. It may be better to allow a professional to re-wire the circuit board to the vacuum.

To reassemble your device, follow these instructions in reverse order.