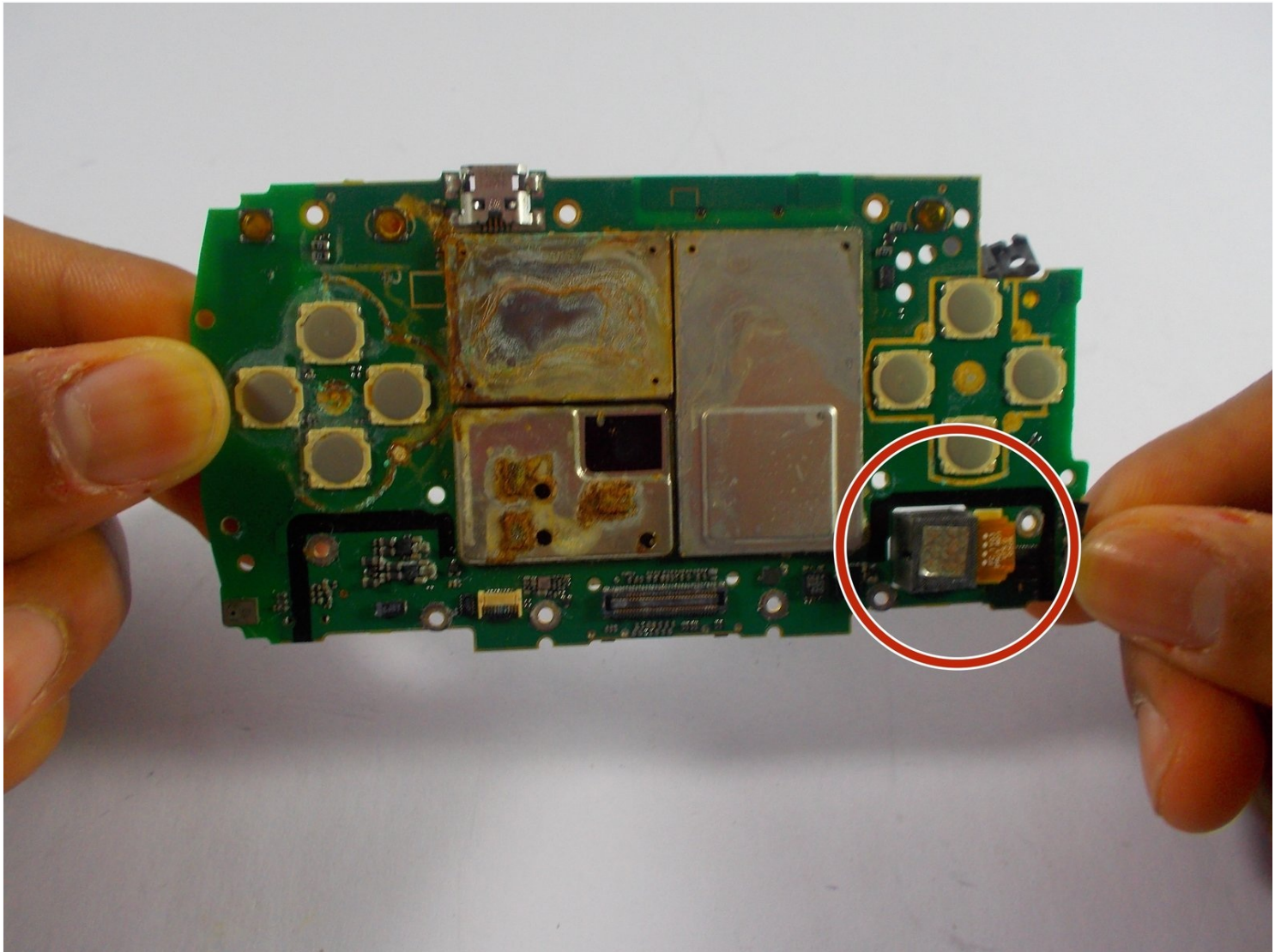




# Sony Ericsson Xperia Play Rear Facing Camera Replacement

Written By: Pieter Boersma



---

## TOOLS:

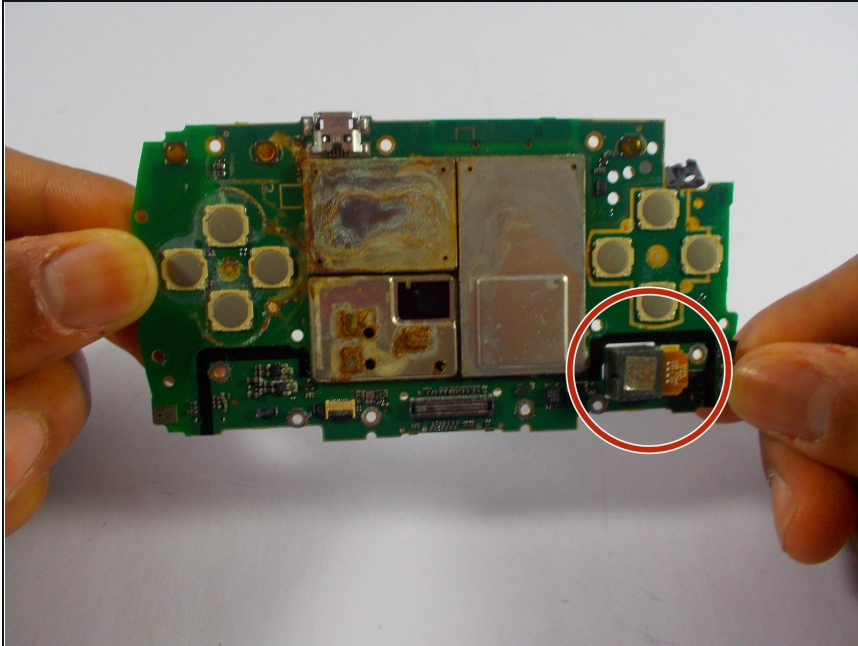
Phillips #00 Screwdriver (1)

iFixit Opening Tool (1)

Tweezers (1)

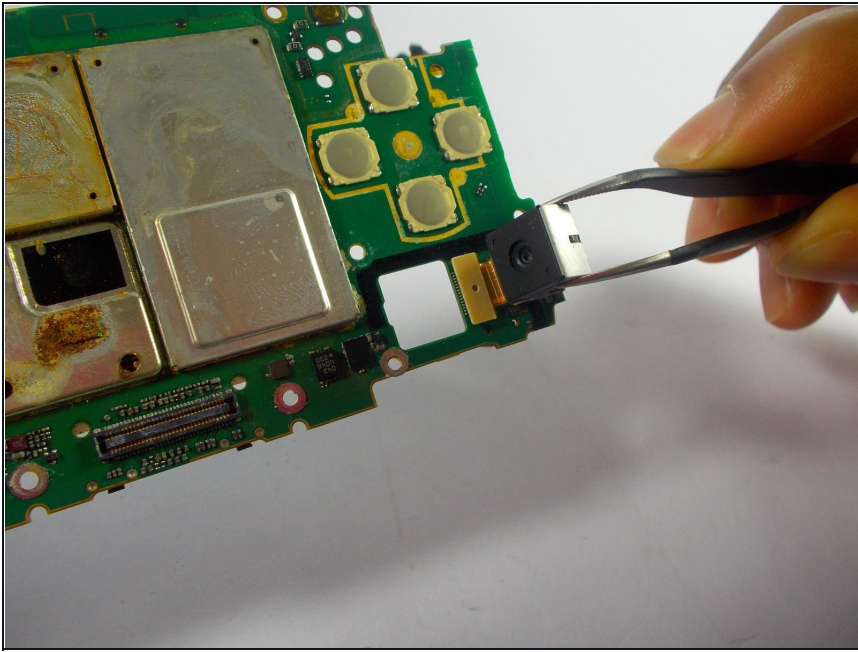
---

### Step 1 — Rear Facing Camera



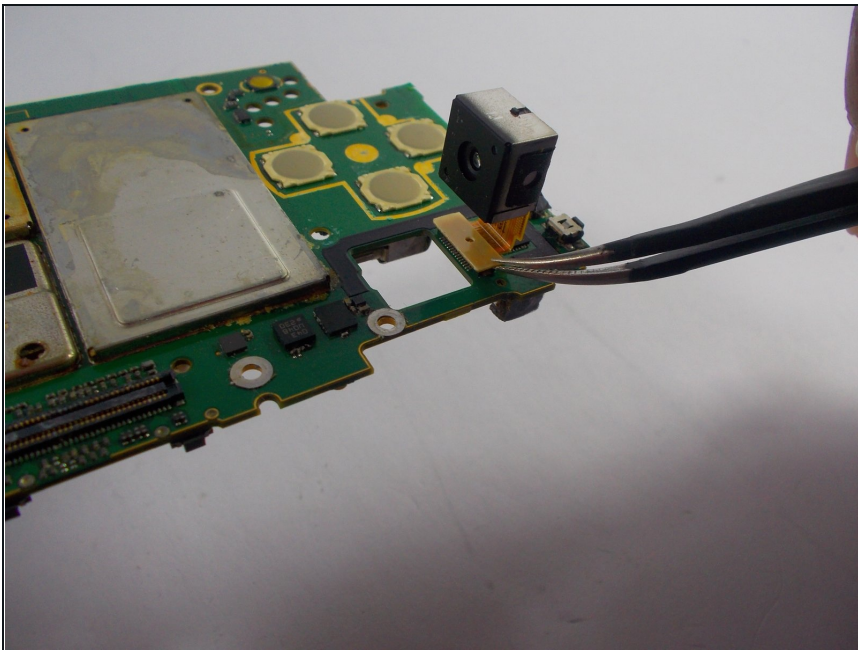
- Follow the Prerequisite Guide on how to Remove the Controller Plate/Buttons to prepare the phone for disassembly. Stop when the motherboard has been detached.
- Orientate the motherboard so that the camera faces away, as shown in the picture.

## Step 2



- With the camera facing away, pull it from the motherboard until it stands perpendicular to the board. [Tweezers](#) can be used to do this.

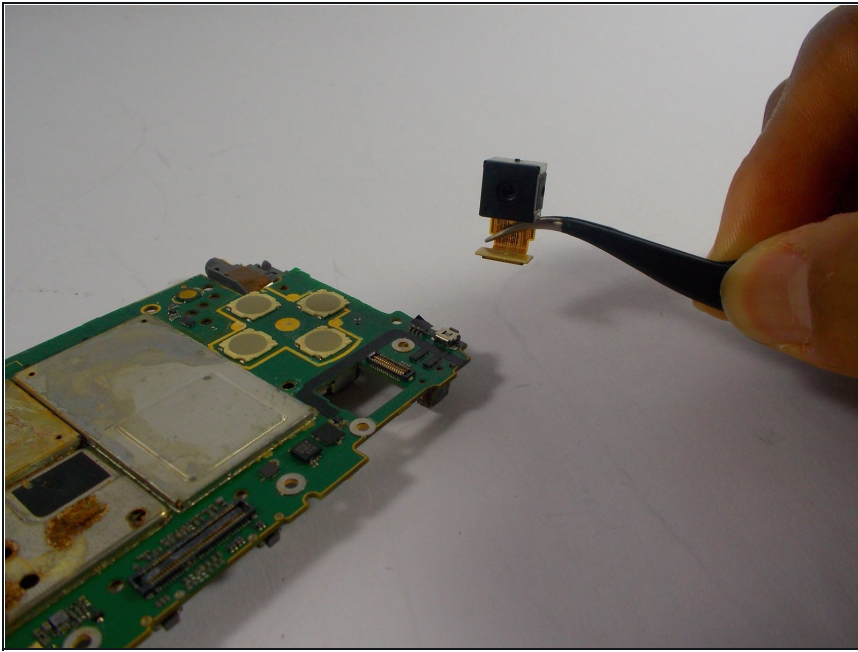
## Step 3



- Use tweezers to pull the camera off of the motherboard. Hold on to the plastic connector and apply the force away from the board.



## Step 4



- The camera is now detached.

---

To reassemble your device, follow these instructions in reverse order.