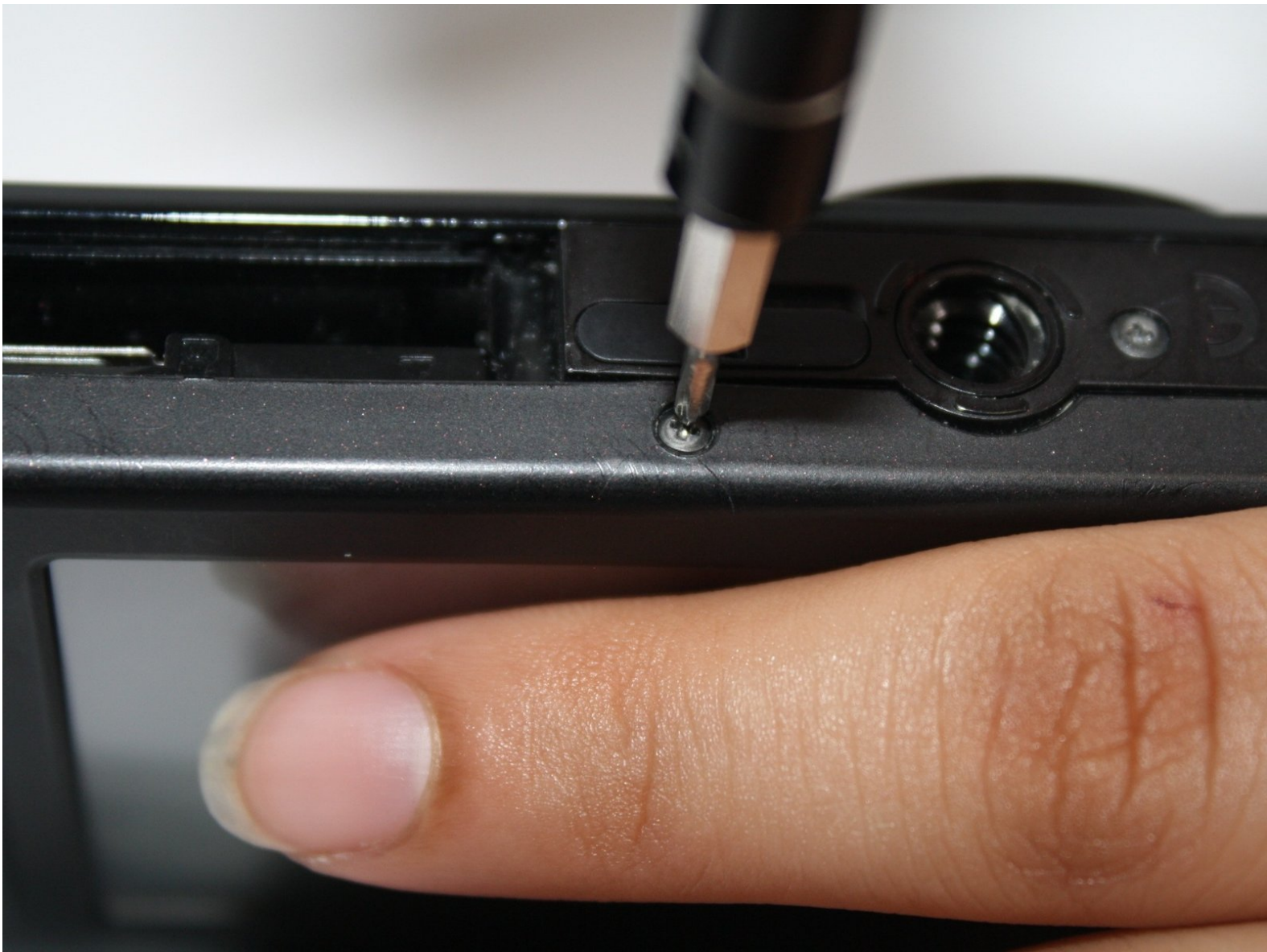




Samsung TL220 LCD Screen Replacement

This guide will give you clear instructions and pictures on how to replace the LCD screen in the Samsung TL220 camera.

Written By: Lesley

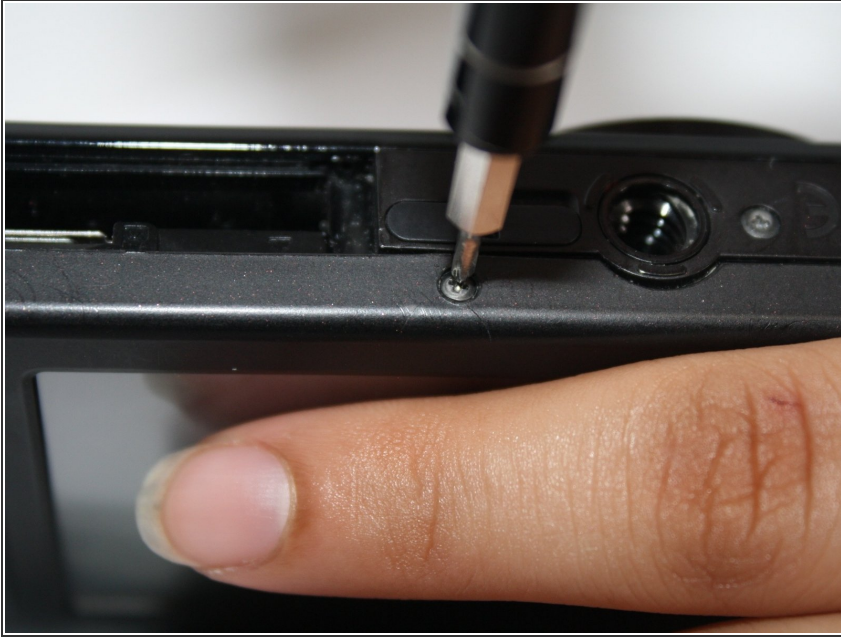




TOOLS:

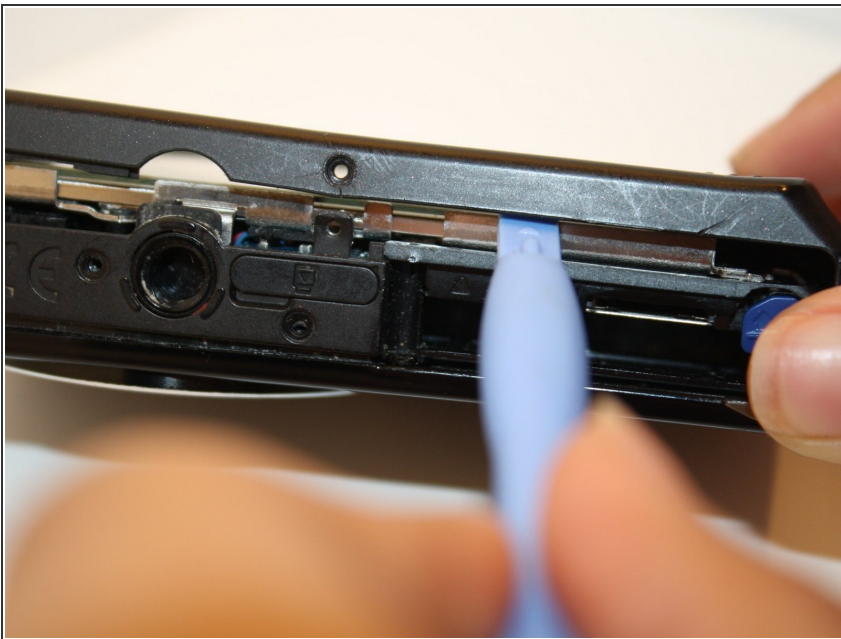
- [iFixit Opening Tools](#) (1)
 - [Pro Tech Toolkit](#) (1)
-

Step 1 — LCD Screen



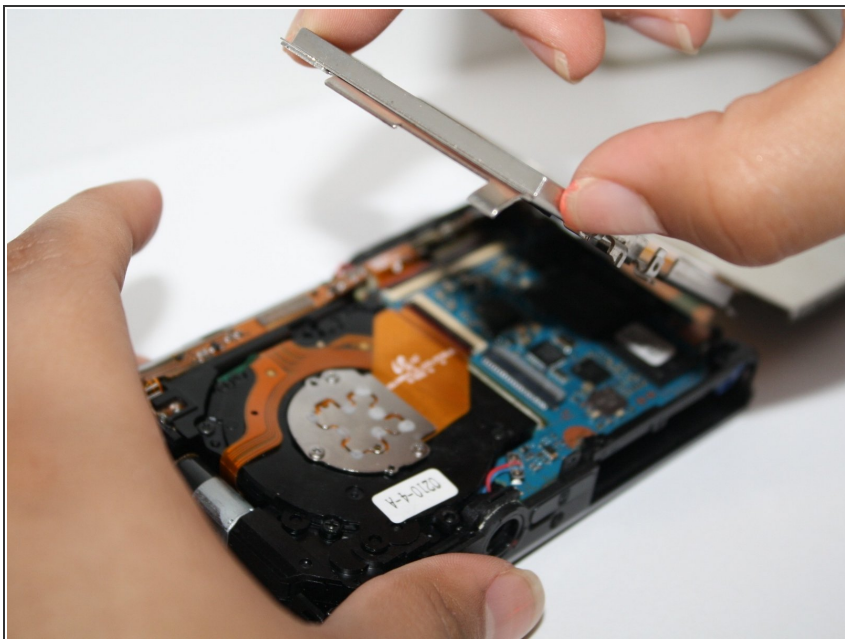
- Begin with unscrewing the seven outer screws on the camera. There is one on each corner and then three at the bottom.

Step 2



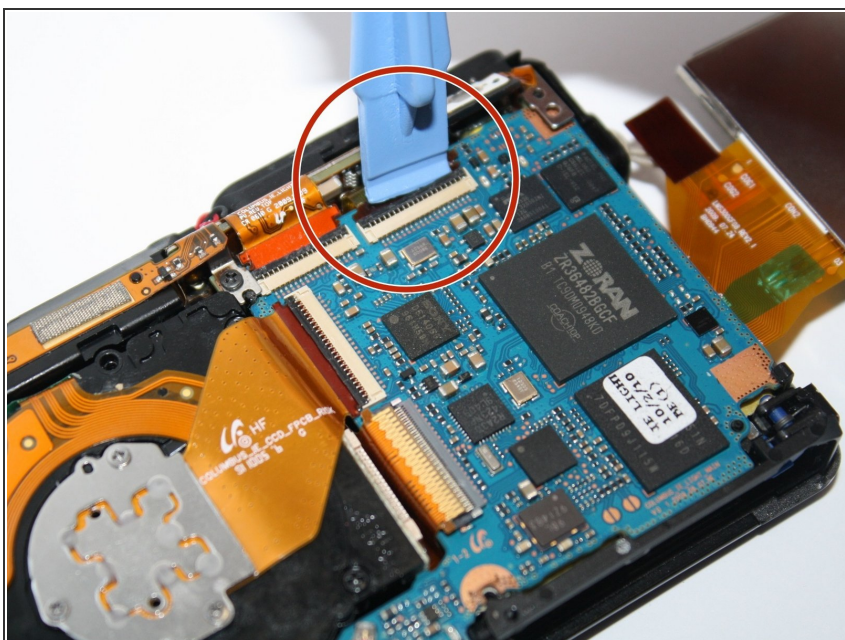
- Now carefully pry open the back casing with the ifixit plastic opening tool.

Step 3



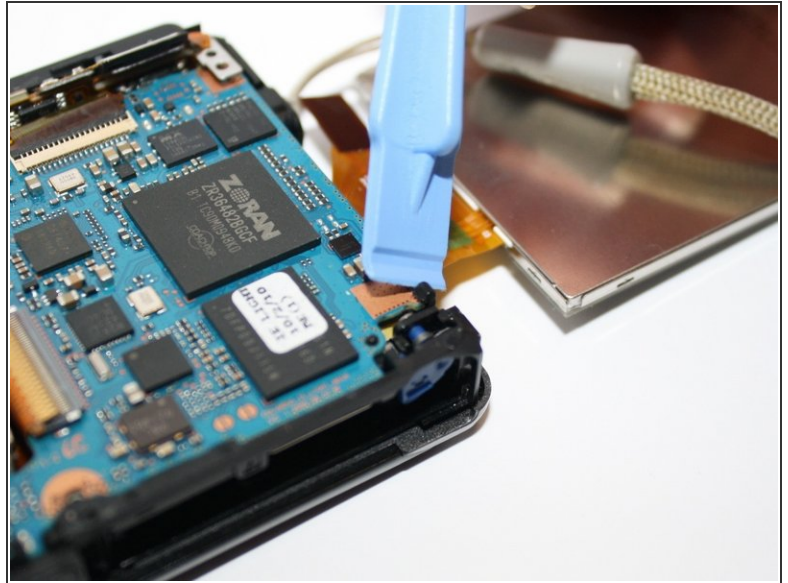
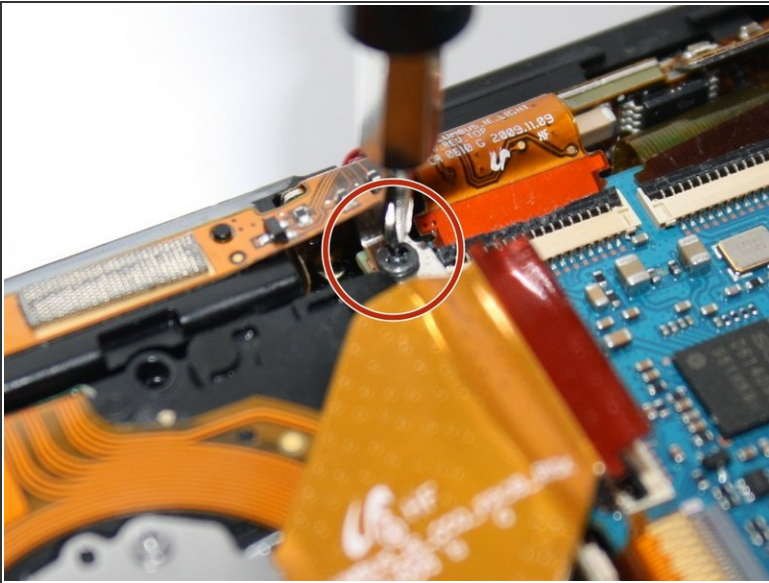
- When the back casing is off, gently move the LCD screen to the side.
- And then remove the three inner screws to remove the inside case.

Step 4



- Unclip the four connectors that hold down the orange copper film strips.
- Then carefully pull out the three film strips with the ifixit plastic opening tool.

Step 5



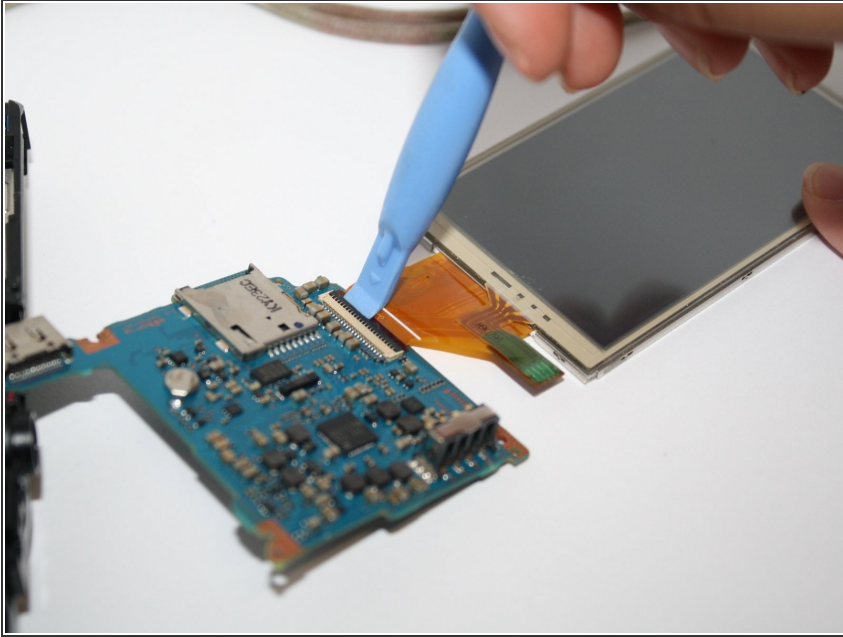
- Remove the screw located above the center film strip. This holds the top frame in place.

Step 6



- Unclip the four connectors to release the film strips.

Step 7



- Next unclamp the connector to release the film strip and then you can replace your LCD screen.

To reassemble your device, follow these instructions in reverse order.