



# Insignia NS-CLIP02 Keypad Replacement

If your Insignia NS-CLIP02 has a keypad that...

Written By: Erik



## INTRODUCTION

If your Insignia NS-CLIP02 has a keypad that does not work, use this guide to replace the motherboard inside. Faulty motherboards cause the keypad to malfunction, so replacing it should cause the keypad to work again.

Physically unplug and switch off the device before you start. Once you have finished the replacement, consider recycling the old motherboard at an electronic recycling center near you.



### TOOLS:

- [Essential Electronics Toolkit](#) (1)
  - [Metal Spudger](#) (1)
-

## Step 1 — Keypad



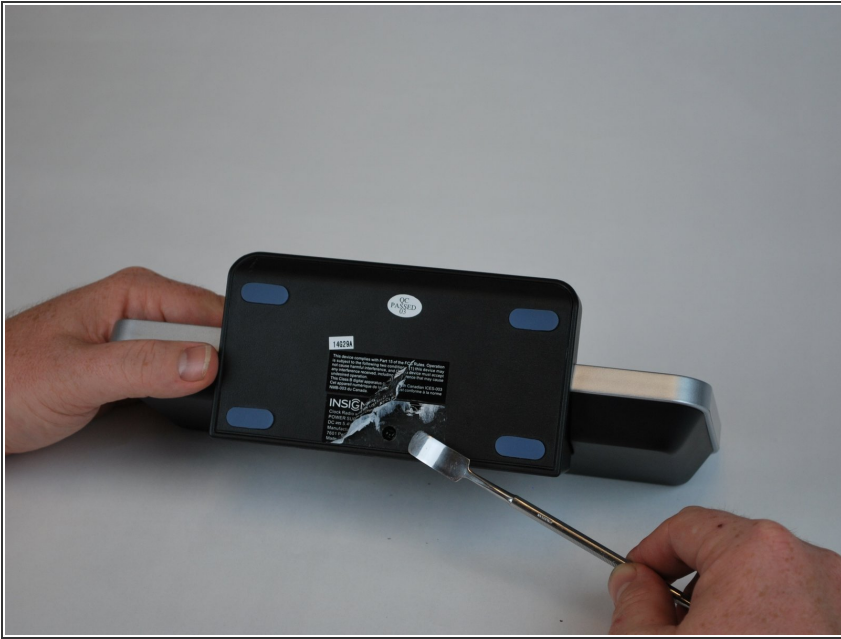
- Locate the bottom of the device.

## Step 2



- Begin by using a metal spudger to peel back the adhesive sticker and locate the 11mm screw beneath the sticker.

## Step 3



- Locate the 11mm screw beneath the sticker.

## Step 4



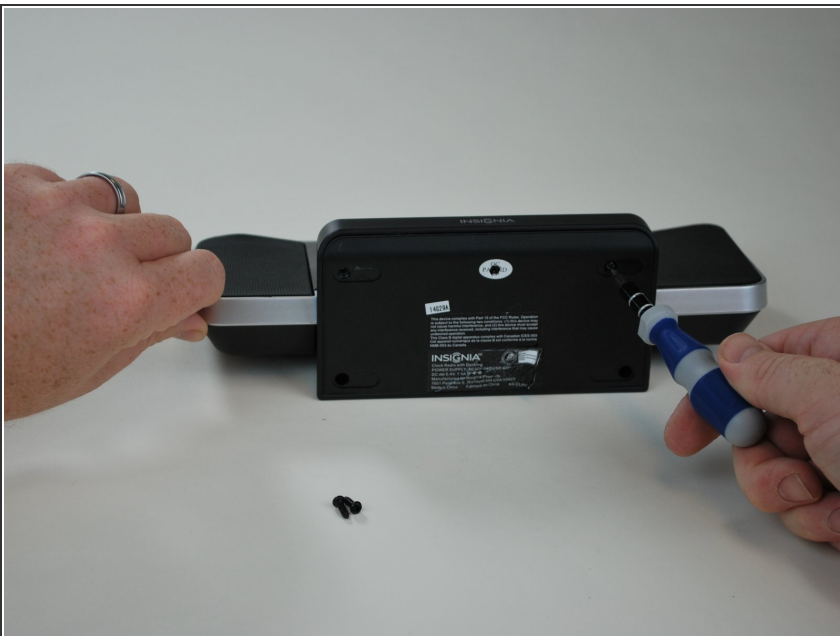
- Using a plastic spudger, peel off the adhesive gel stoppers.

## Step 5



- Continue peeling the rest of the gel stoppers from the bottom of the device.

## Step 6



- Begin unscrewing the six 11mm screws with a Phillips head screw driver.

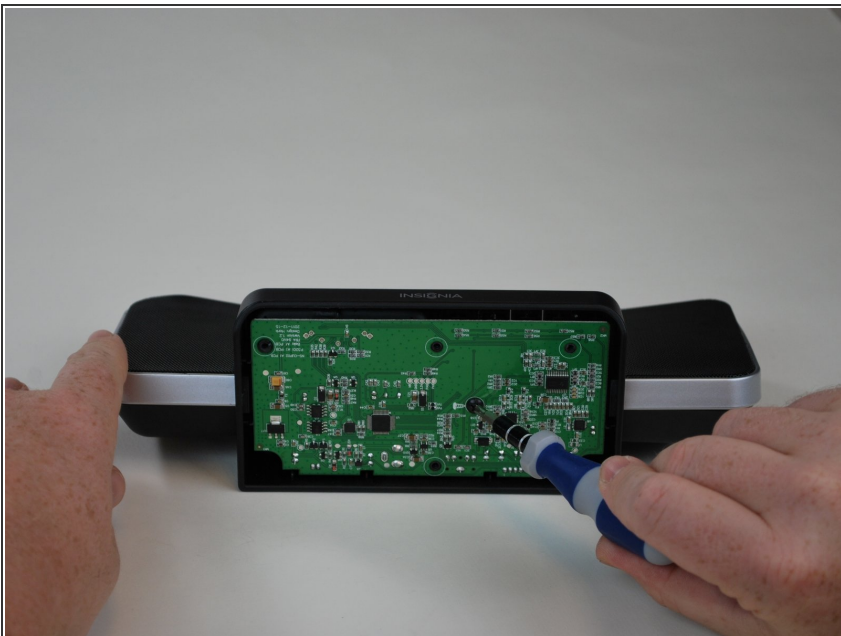


## Step 7



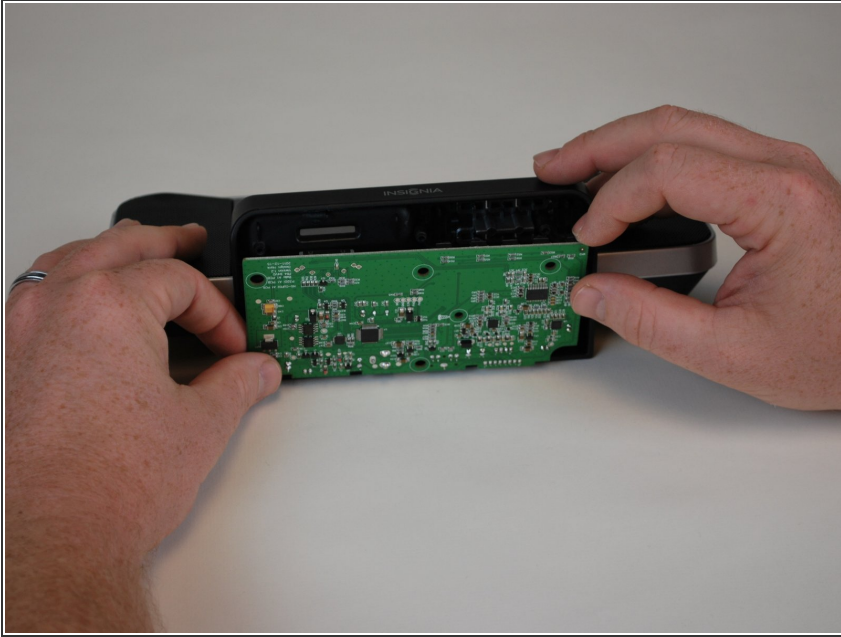
- Once you peel off the bottom from the device, you will see the motherboard.

## Step 8



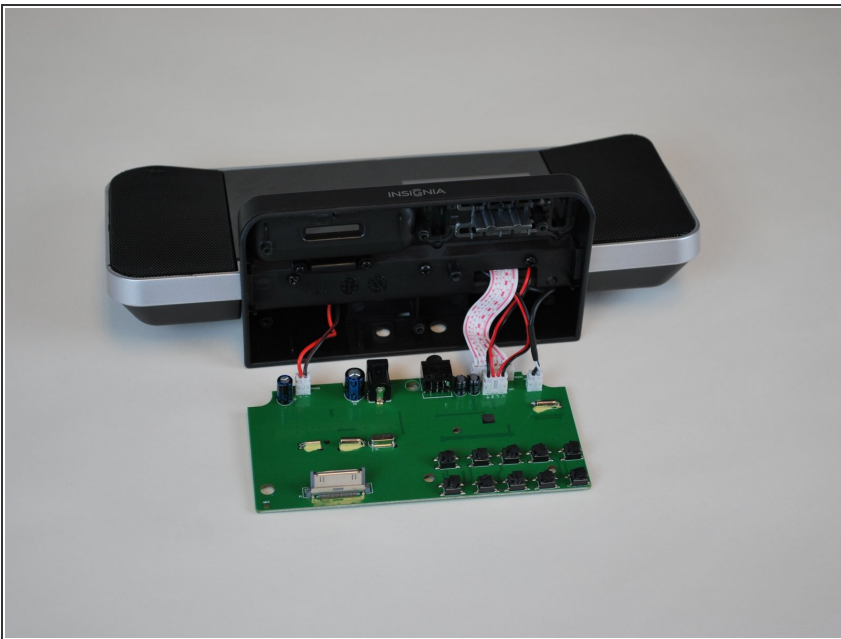
- Unscrew the 9.5mm screw located near the center of the motherboard with a Phillips head screw driver.

## Step 9



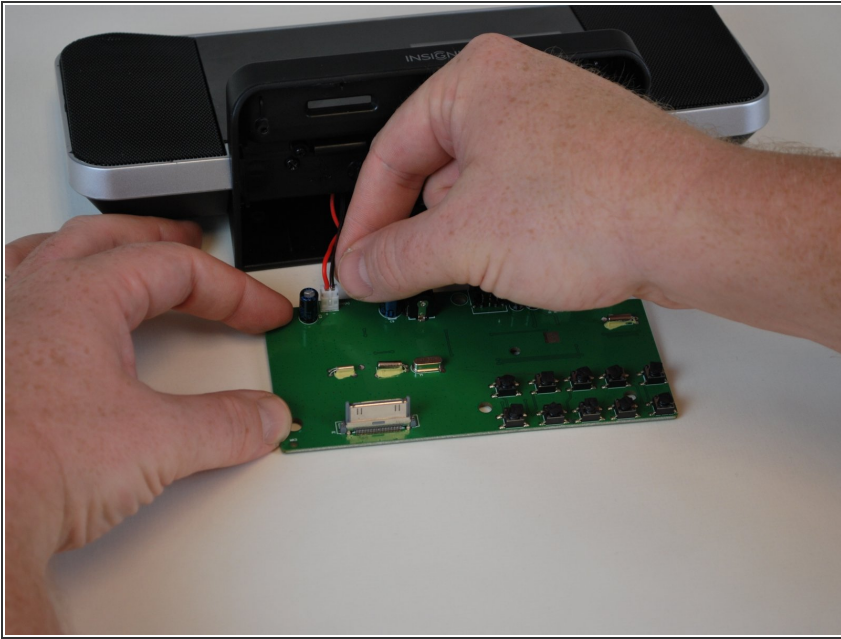
- Lift the motherboard from the device.

## Step 10



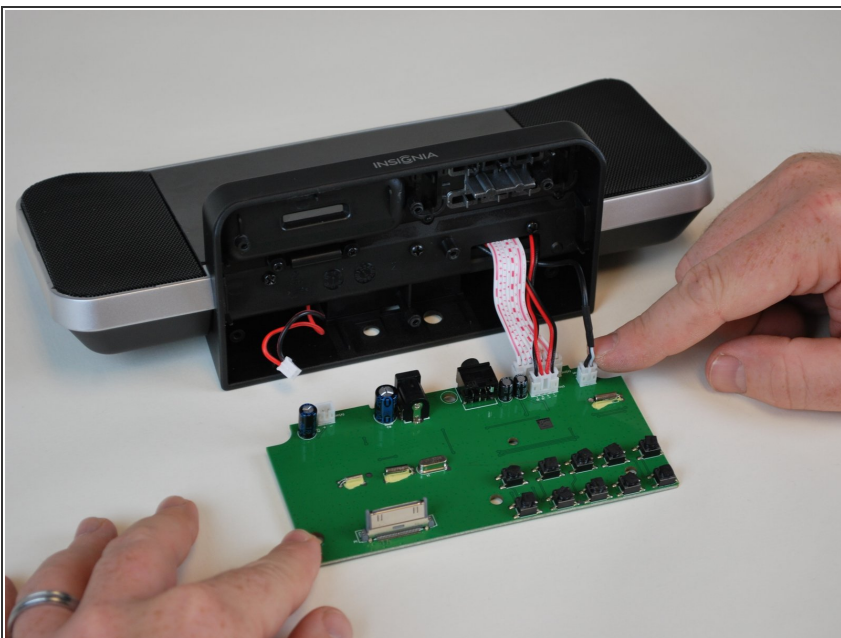
- Locate the four plugs connecting the motherboard to the rest of the device.

## Step 11



- Begin with removing the plug to your left.

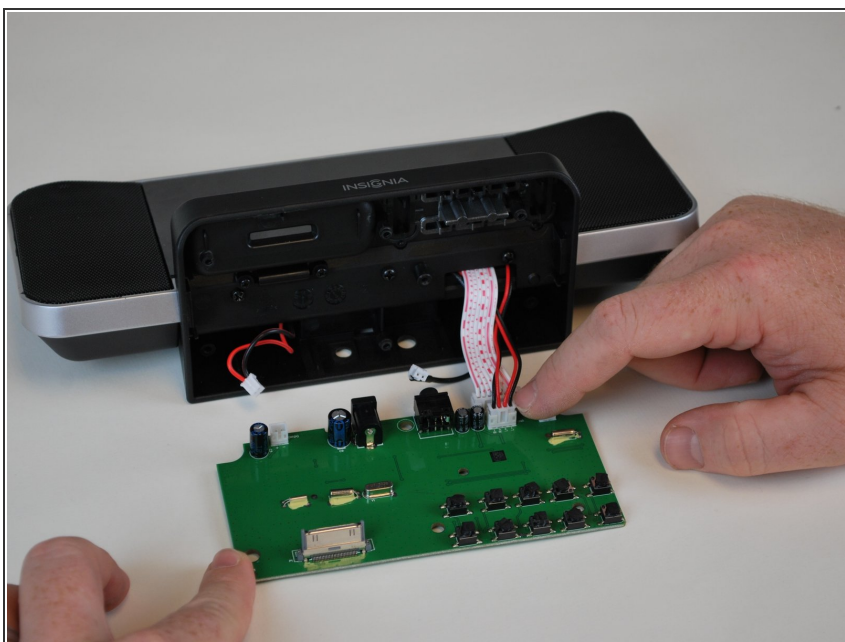
## Step 12



- Remove the plug to your right from the motherboard.



## Step 13



- Remove the plug in the front of the lcd screen plug.

## Step 14



- Remove the LCD screen plug last. Then, follow the following instructions in reverse, replacing the old motherboard with the new one to fix the keypad.

To reassemble your device, follow these instructions in reverse order.