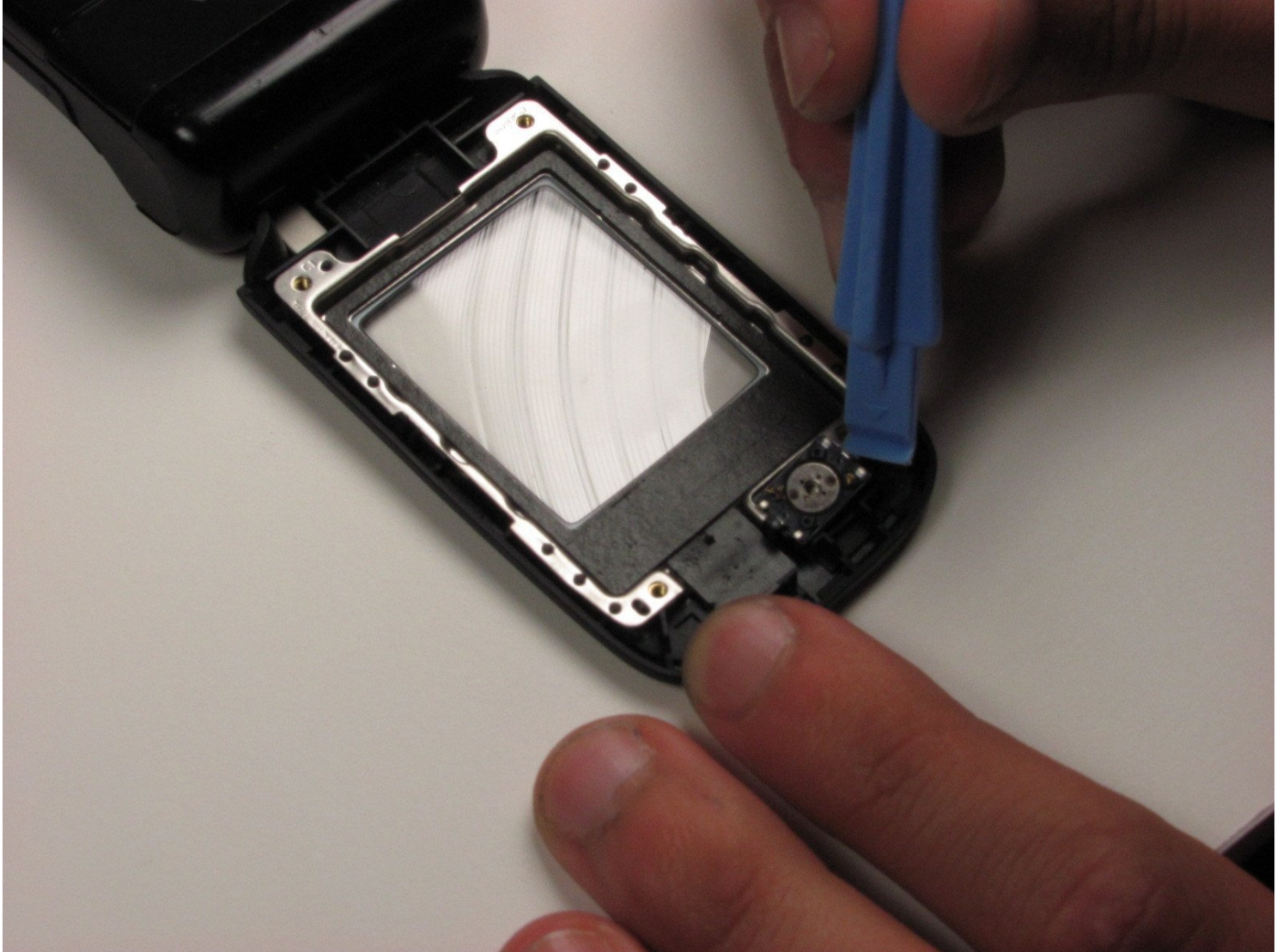




# Nokia 6085h Speaker Replacement

This guide give instructions on how to locate...

Written By: Andrew



# INTRODUCTION

This guide give instructions on how to locate the speaker for removal and/or repair.

---

## TOOLS:

[iFixit Opening Tool](#) (1)

[T6 Torx Screwdriver](#) (1)

---

## Step 1 — Battery



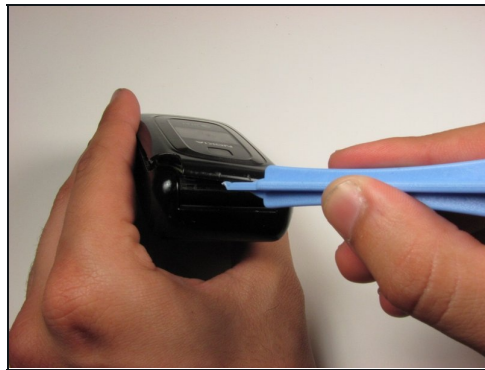
- Flip over the phone so that the back is facing up.
- Pressing your thumb against the back cover, slide the cover off of the phone.

## Step 2



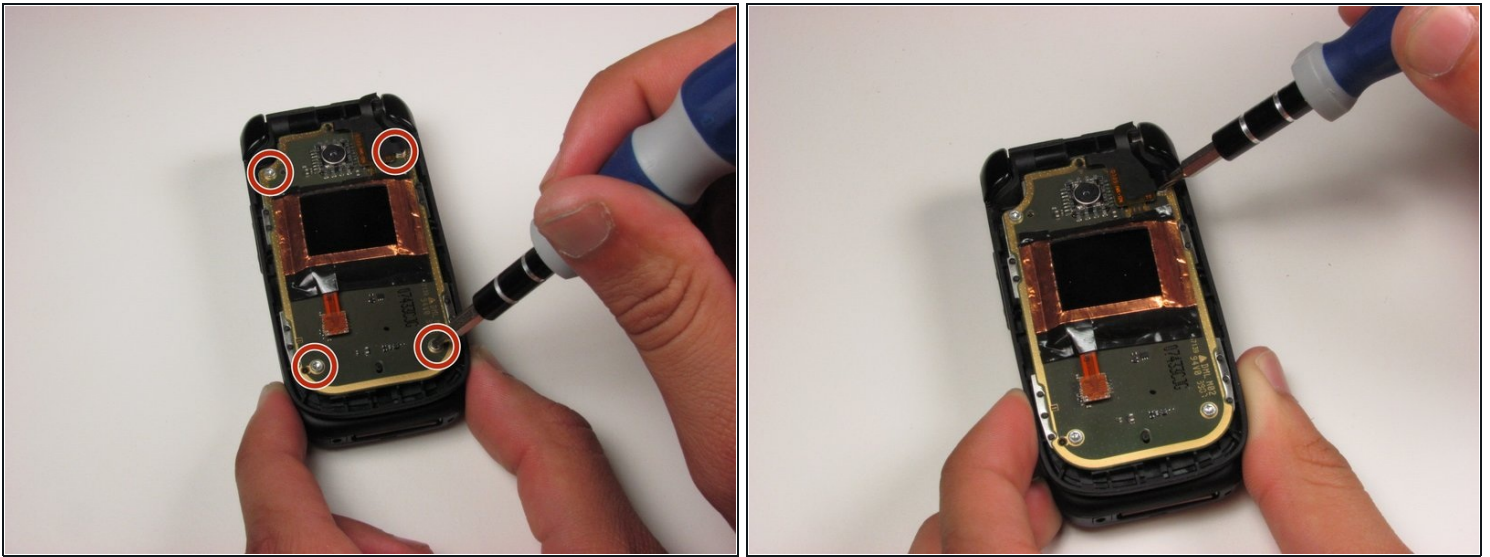
- Remove the phone's battery.

## Step 3 — Front LCD Display



- With the phone closed, run a plastic opening tool along the seam of the top half of the phone.
  - Make sure to disconnect each of the five clips before proceeding to the next step.
- ⓘ There are two clips on each side of the phone and one on the top.

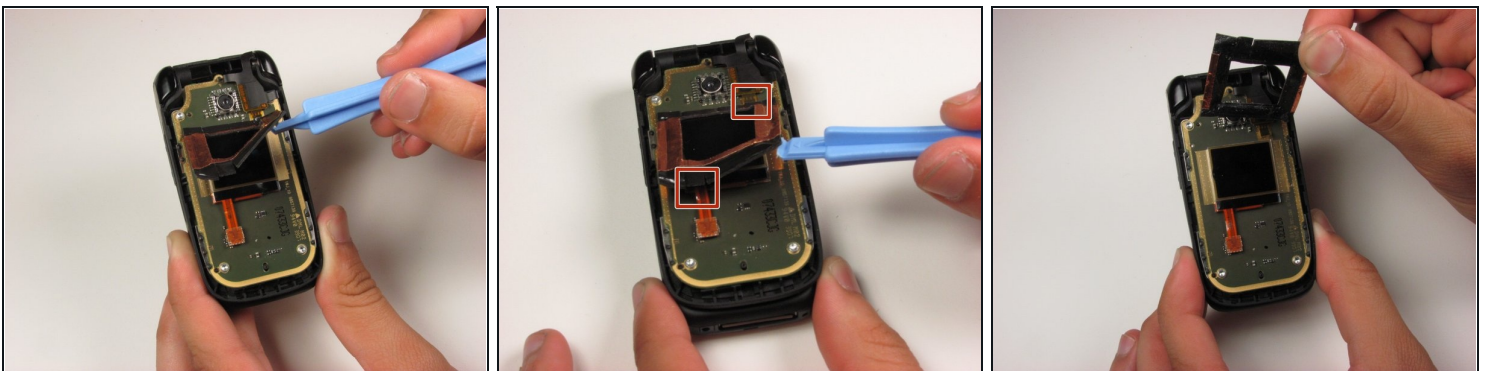
## Step 4



- Remove the four 3.2 mm screws from the front panel using a T6 Torx screwdriver.

ⓘ The fourth screw is located under a fold in the ribbon cable.

## Step 5

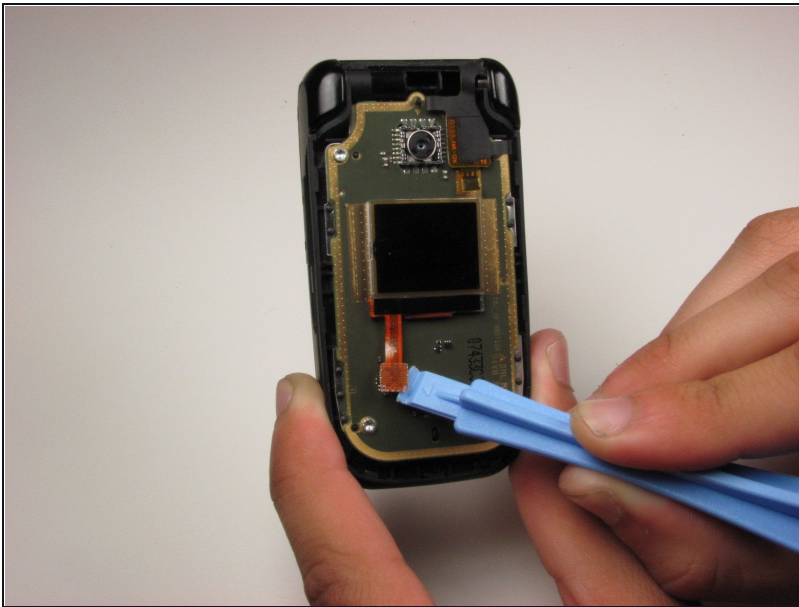


- Starting in the lower right corner, slowly begin to lift the tape that is holding down the front LCD and cables.

⚠ Be careful around the two ribbon cables attached to the tape. These cables are fragile.

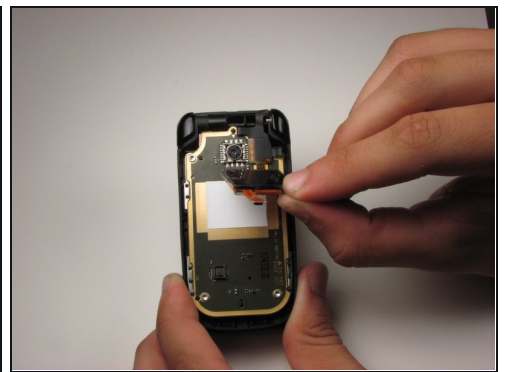
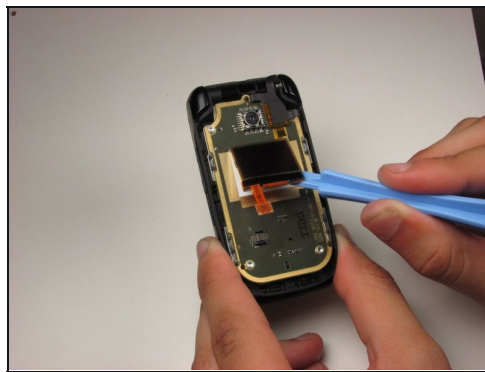
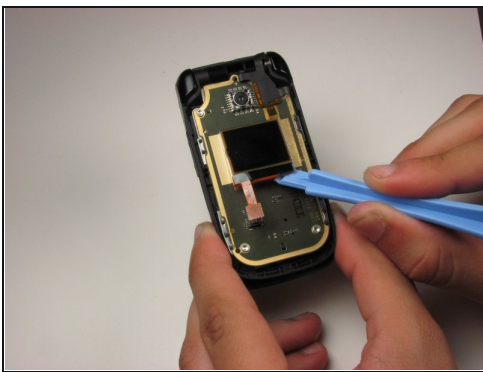
- Lift the tape from the board.

## Step 6



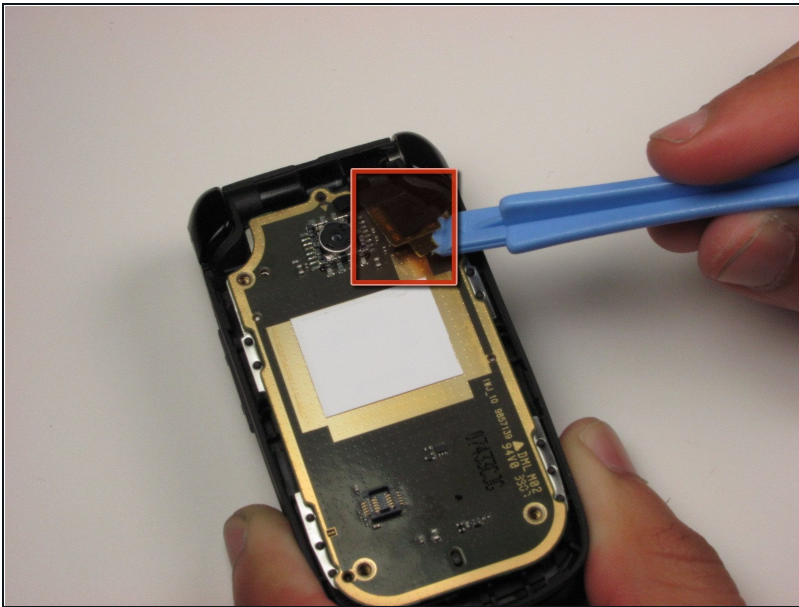
- Using a plastic opening tool, lift the ribbon cable connection below the front LCD.

## Step 7



- Using a plastic opening tool, slowly pry the LCD display from the bottom, releasing it from the glue that is holding it to the board.

## Step 8 — Inner LCD Display



- Locate the ribbon cable connection in the upper right hand corner of the board.
- Using a plastic opening tool, lift off the cable from the board.

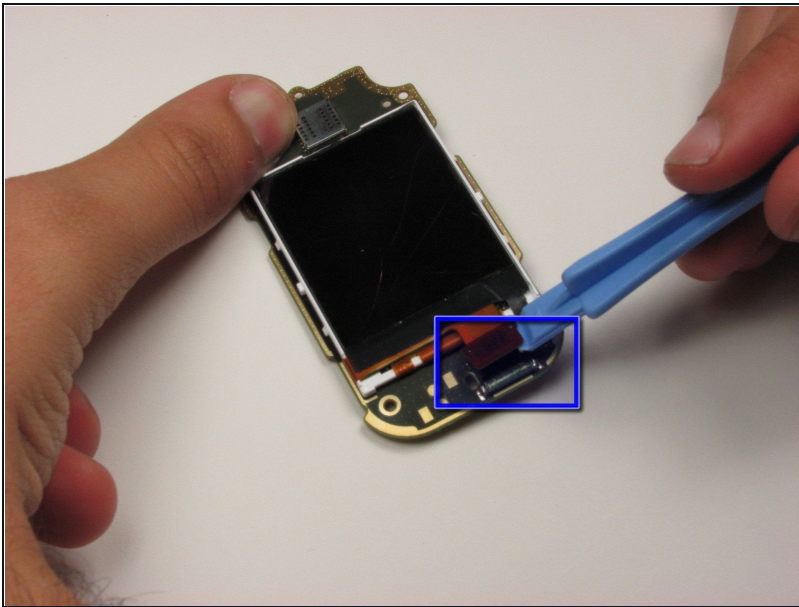
⚠ Be gentle and make sure not to rip the ribbon cable.

## Step 9



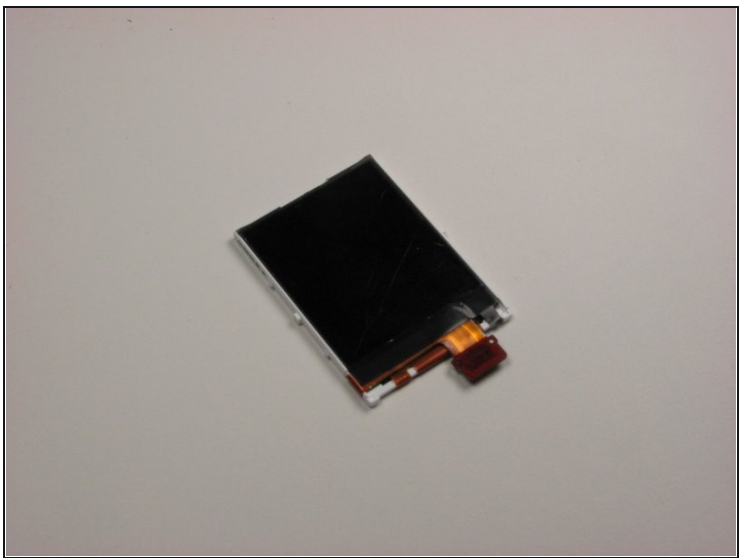
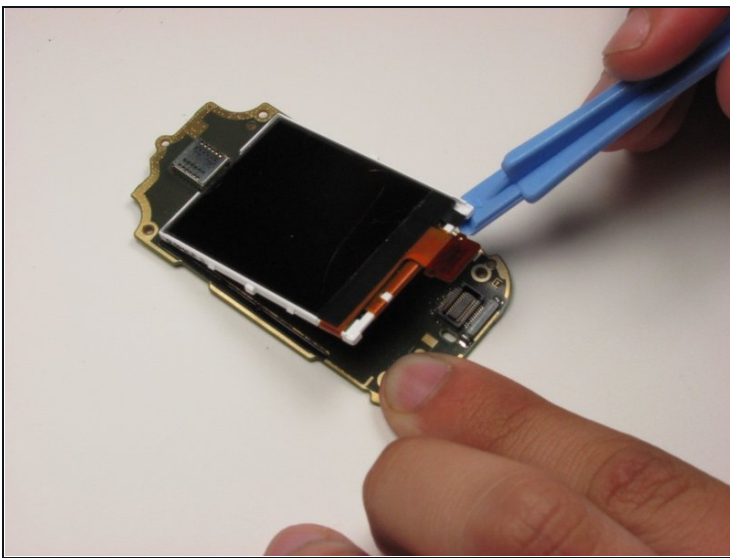
- Using a plastic opening tool, slowly work the board off the mounts holding it to the frame.
- Flip the board over to reveal the main display.

## Step 10



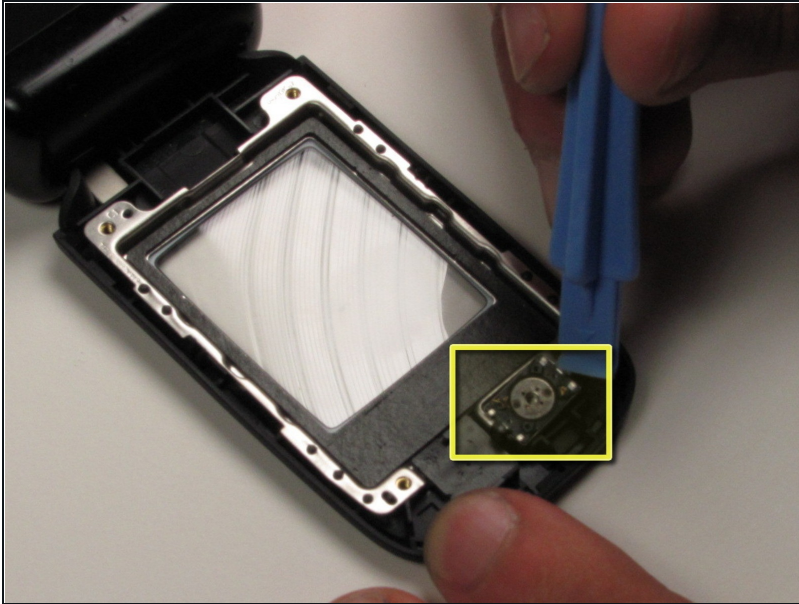
- Locate the ribbon cable for the main display on the bottom of the board.
- Slowly lift off the ribbon connector from its housing using a plastic opening tool.

## Step 11



- Slowly wedge the plastic opening tool under the bottom of the main display.
- Separate the display from the glue lifting it off the board.

## Step 12 — Speaker



- Using a case opening tool, gently pry the speaker in the bottom corner from the glue from right to left until it pops out.

---

To reassemble your device, follow these instructions in reverse order.