



# Gateway 600YG2 CD/DVD or Floppy drives

## Replacement

This guide will show you how to remove the...

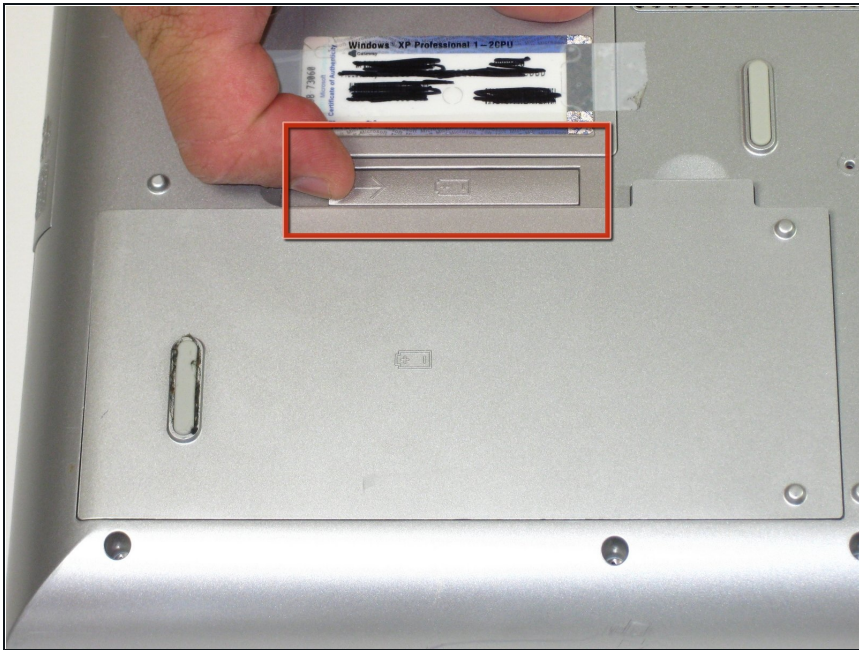
Written By: Elizabeth Mazer



# INTRODUCTION

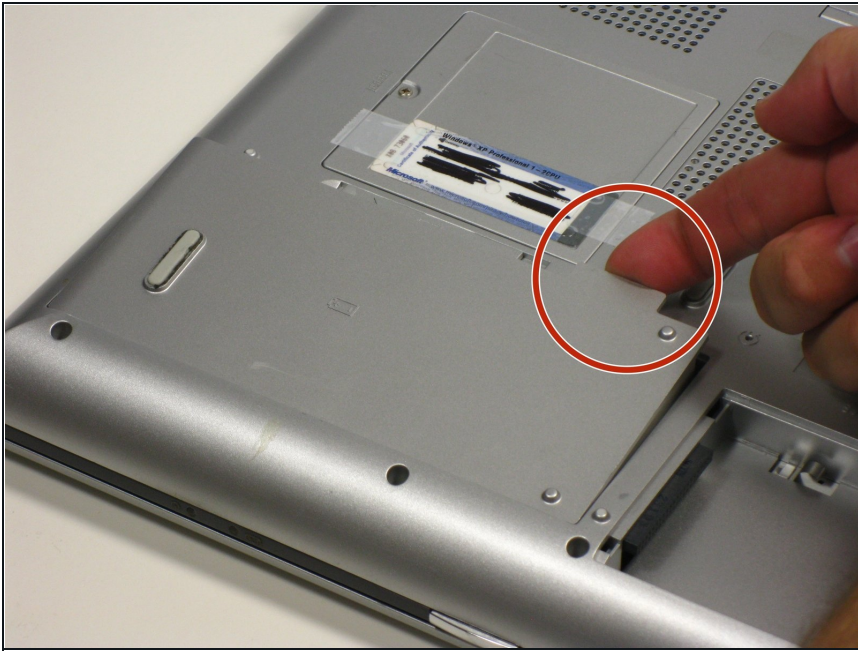
This guide will show you how to remove the CD/DVD and floppy drives of your Gateway 600YG2 laptop.

## Step 1 — Battery



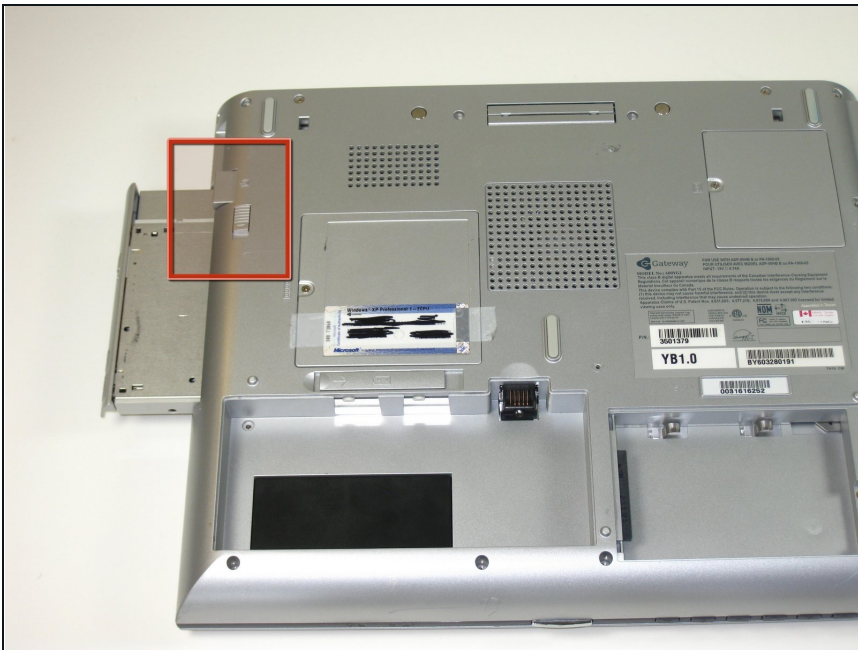
- Flip the laptop over.
- Slide the battery release tab to the right with your index finger to open the battery cover.

## Step 2



- Remove the battery cover using the tab on the right side.
- Take the battery out with your index finger.

## Step 3 — CD/DVD or Floppy drives



- Slide the release and push the button to eject the drive.
- Remove the drive.

⚠ When reinserting the drives, be sure to put them in the original slot to avoid interface conflicts.

To reassemble your device, follow these instructions in reverse order.

