



# Motorola V557 Motherboard Replacement

The motherboard acts as the "brain" of the...

Written By: Chad Brantley



# INTRODUCTION

The motherboard acts as the "brain" of the phone. Any damage the phone sustains to this region generally causes major malfunctions; thus, you should take extra care while removing/replacing this piece.

---

## TOOLS:

[iFixit Opening Tool](#) (1)

[Push Pin](#) (1)

[Spudger](#) (1)

[T6 Torx Screwdriver](#) (1)

---

## Step 1 — Battery



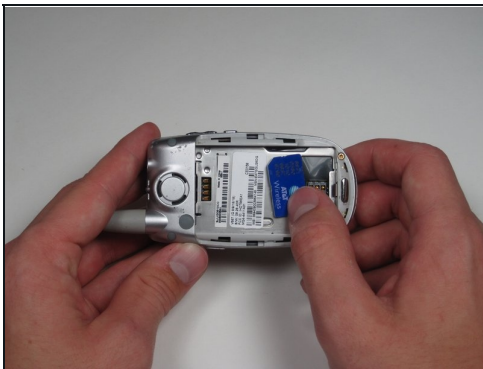
- First, on the back of the phone find the silver button on the top left corner of the phone.
- Simultaneously push down the button and slide the back plate down to reveal the battery.

## Step 2



- Grab the lower edge of the battery at the two bottom corners.
- Pull upward on the edges to remove the battery.

## Step 3 — SIM Card



- Push the metal slider towards the top of the phone until it clicks out of the original position.
- Gently slide out and remove the SIM card.

## Step 4 — Antenna



- Grip the antenna and twist it counterclockwise to loosen it.
- When it has been loosened all the way, pull gently to remove the antenna piece.

## Step 5 — Rear Casing



- Using a pin, gently pry the top two screw covers off.
- The large cover in the upper left of the back plate does not need to be removed.

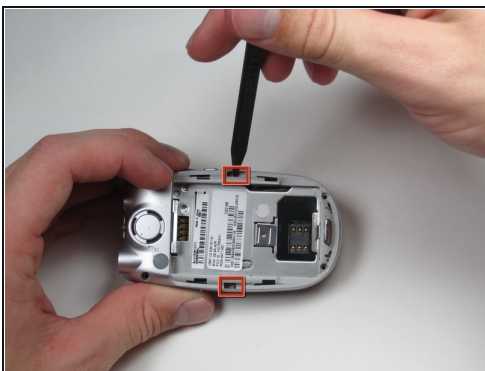


## Step 6



- At the corners of the phone, remove all four 6.0 mm Torx screws.

## Step 7



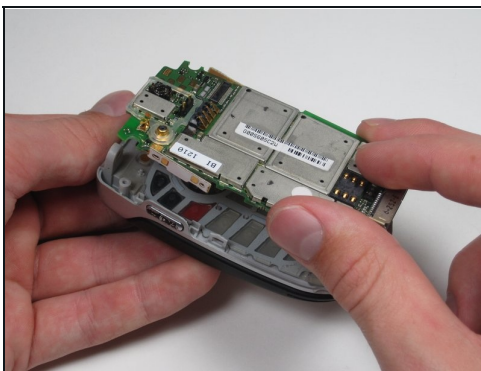
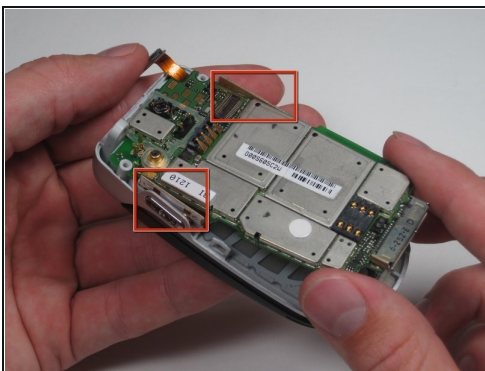
- Next, insert a spudger into the marked holes, one at a time, and pry away from the phone to release the internal tabs.
- Then, separate and detach the rear casing.

## Step 8 — Motherboard



- Separate the front ribbon cable from the board with a plastic opening tool.

## Step 9



- Make sure you don't break the ribbon cables that attach to the side buttons when removing the motherboard.
- Lift out the motherboard only after all cables have been disconnected. Try to touch it only from the sides.

---

To reassemble your device, follow these instructions in reverse order.