



Sony ICF-C1T Tuner Dial Replacement

If your Sony ICF-C1T alarm clock/radio is...

Written By: Megan



INTRODUCTION

If your Sony ICF-C1T alarm clock/radio is having issues with changing the station or playing the correct frequency, you may need to replace the tuner dial. Replacing the tuner dial on your radio will ensure that the alarm clock/radio can switch through different radio frequencies. Follow this guide for step-by-step instructions on replacing the tuner dial of your device.

🔧 TOOLS:

[iFixit Opening Tool](#) (1)

[Phillips #00 Screwdriver](#) (1)

⚙️ PARTS:

[New tuner dials](#) (1)

Step 1 — Tuner Dial



- Using the Phillips #00 screwdriver, remove four 14mm screws from the underside of the device.

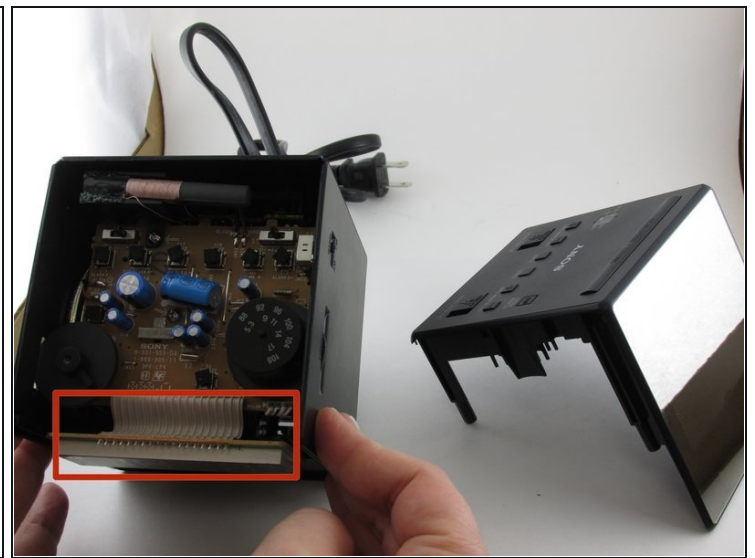
⚠️ Make sure that the clock is unplugged and the battery is removed before tampering with the device to avoid electrical shock.

Step 2



- Use the opening tool to pry apart the edges of the top and side portions of the device.

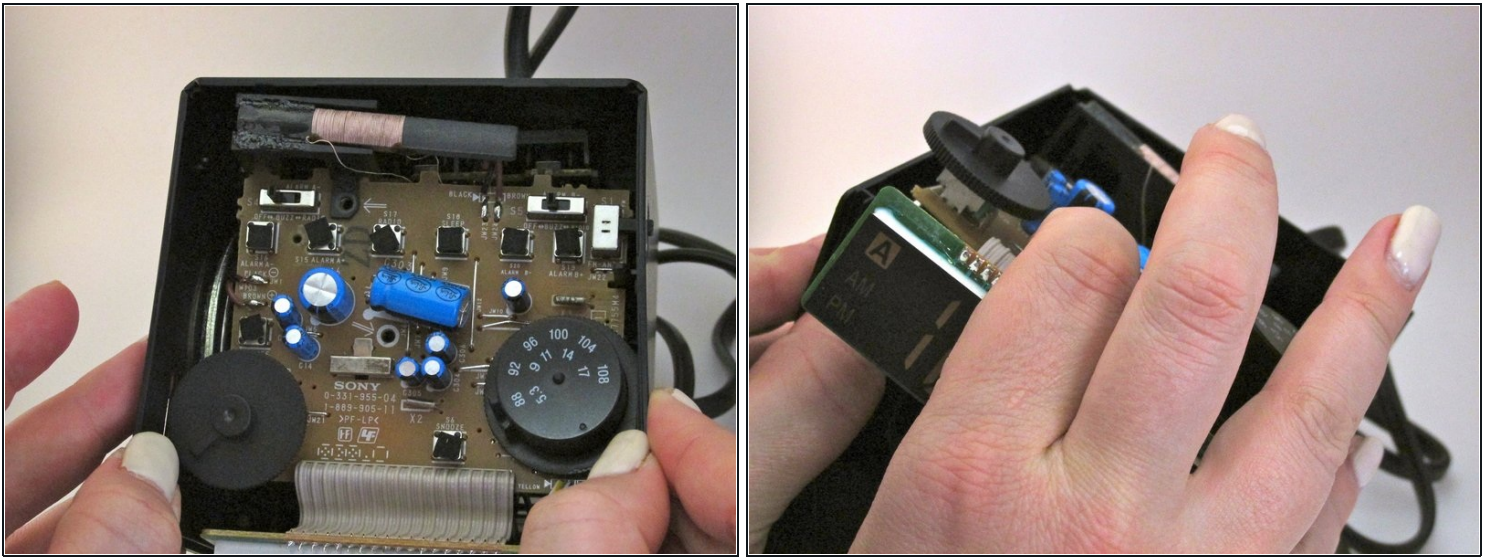
Step 3



- Separate the device by gently pulling up on the top portion.

⚠ Use caution when pulling the device apart as the clock display is located close to the front face plate and is connected by multiple wires.

Step 4



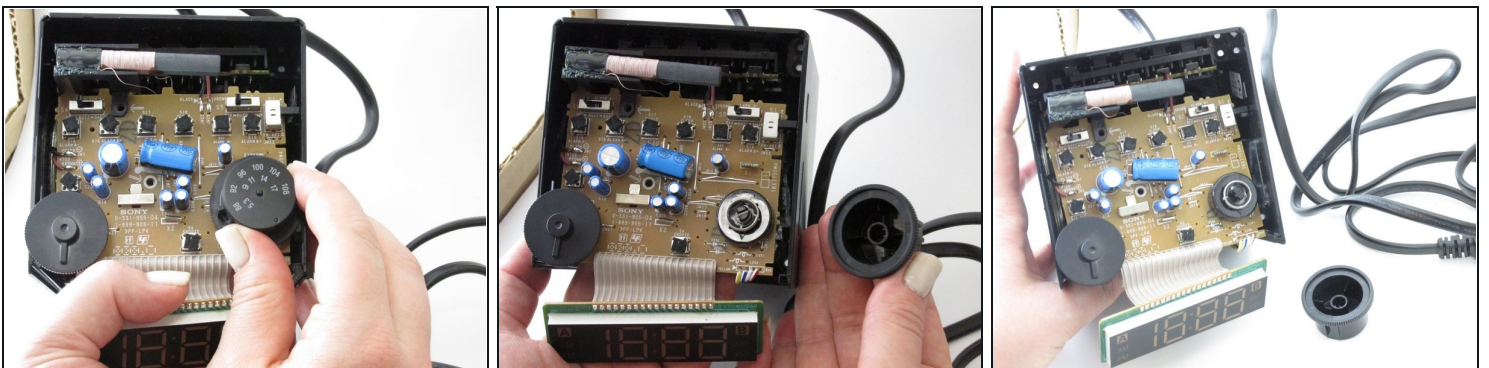
- To remove the motherboard, gently pull apart the sides of the device.

⚠ Do not pull hard on the motherboard, because it is still connected by multiple wires inside the device.

⚠ Be careful of sharp pieces on the motherboard.

ℹ Having help for this step might make things quicker and easier.

Step 5



- Remove the tuner dial by pulling it off of the motherboard. This can take a little force to remove.

To reassemble your device, follow these instructions in reverse order.

