



# Acer Aspire R7 Display Assembly Replacement

This guide will show you how to replace a cracked display assembly on an Acer Aspire R7 laptop.

Written By: computeripodrepair



# INTRODUCTION

This guide will show you how to replace a cracked display assembly on an Acer Aspire R7 laptop.

---

## TOOLS:

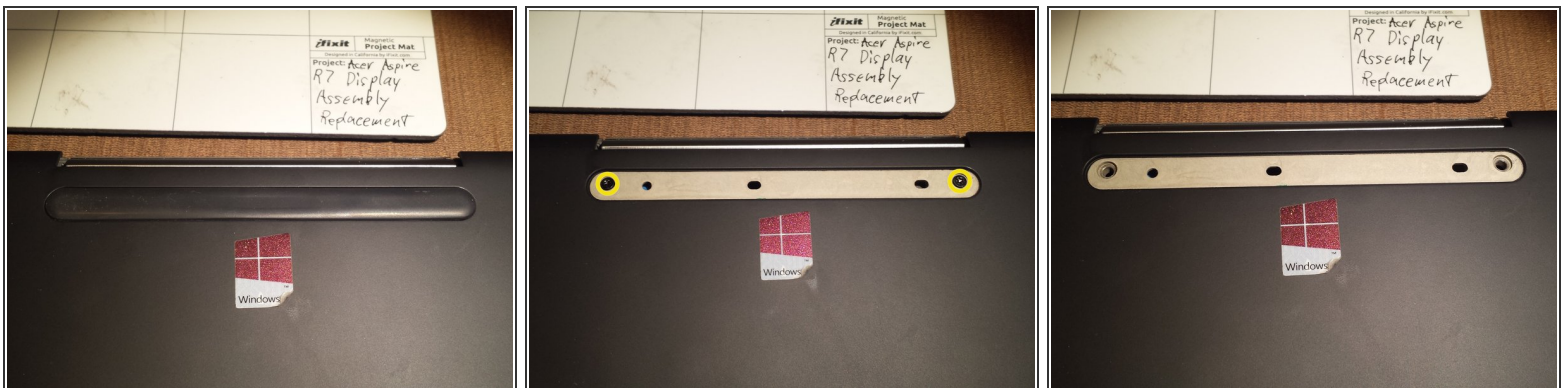
- [T9 Torx Screwdriver](#) (1)
  - [Phillips #00 Screwdriver](#) (1)
  - [Flathead 3/32" or 2.5 mm Screwdriver](#) (1)
  - [Spudger](#) (1)
  - [Magnetic Project Mat](#) (1)
  - [Arctic Silver Thermal Paste](#) (1)
  - [Arctic Silver ArctiClean](#) (1)
-

## Step 1 — Lower Case



- Remove all 10 of the lower case screws with a T9 torx screwdriver.
- ⓘ The front row screws are shorter than the middle and back row screws.

## Step 2



- Remove the long middle rubber piece with a plastic spludger or small flat head screwdriver.
- Remove the 2 torx screws.
- ⓘ The screws are the same size as the top and middle row screws.

### Step 3



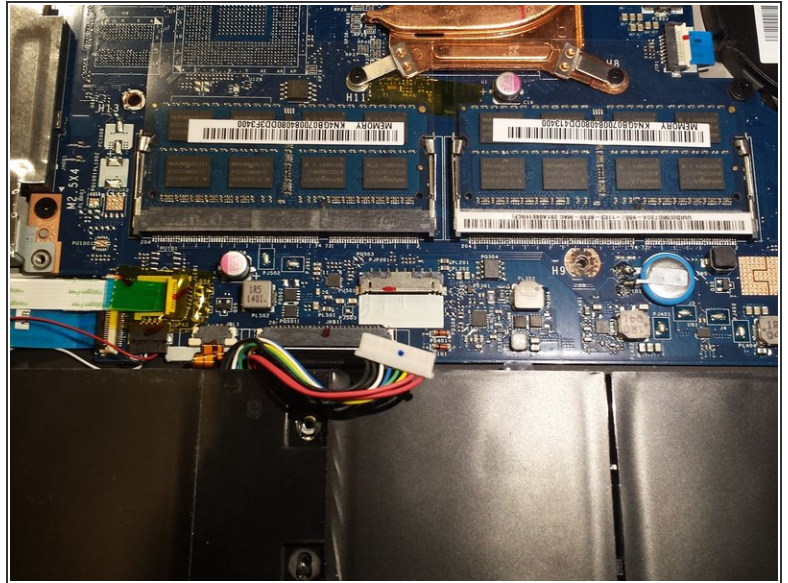
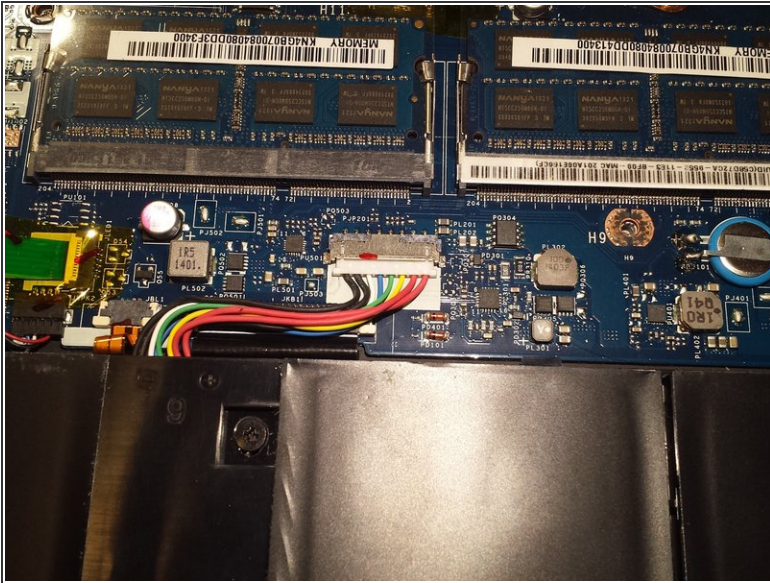
- Remove the small middle rubber piece with a plastic spludger or small flat head screwdriver.
- Unscrew the torx screw. It is the same size as the bottom front row screws.

### Step 4



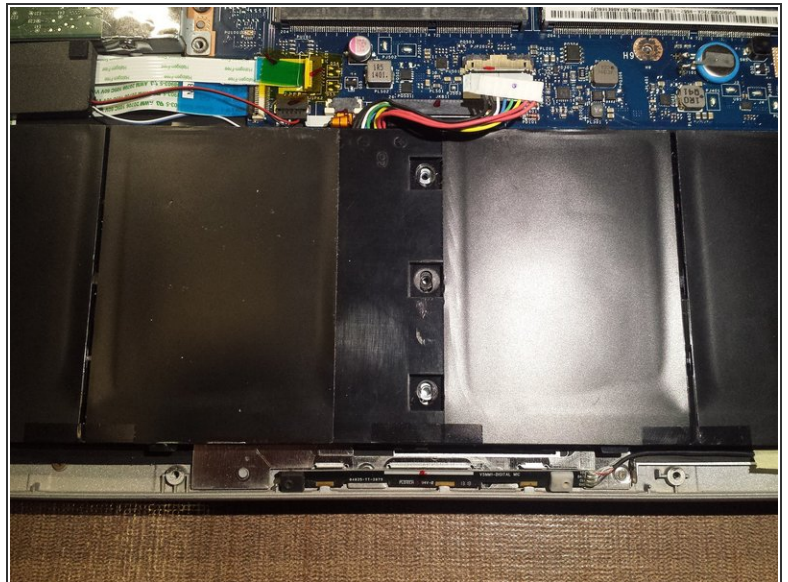
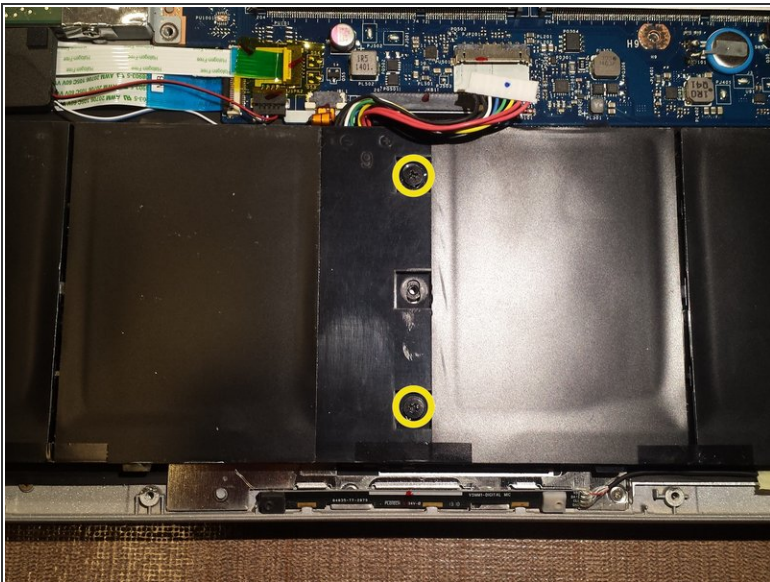
- Lift up the lower case from the computer.

## Step 5 — Disconnect and Remove the Battery



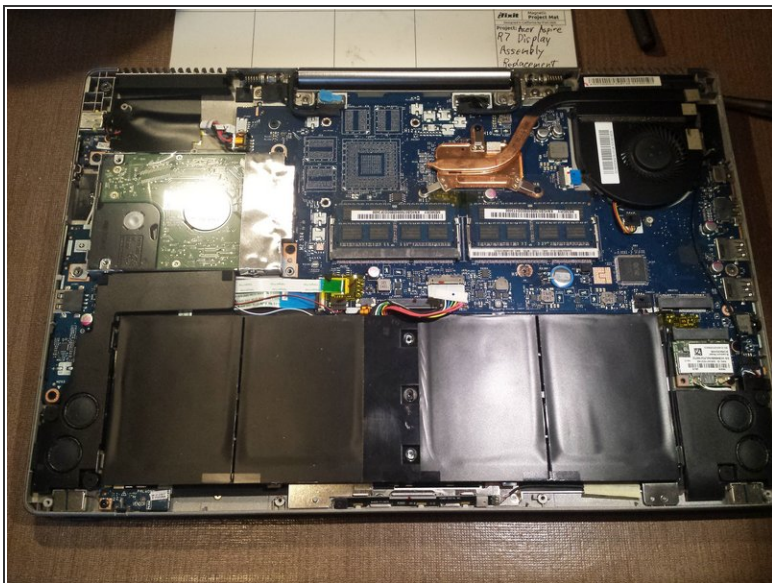
- Disconnect the battery connector from the motherboard.

## Step 6



- Remove the two battery screws.

## Step 7



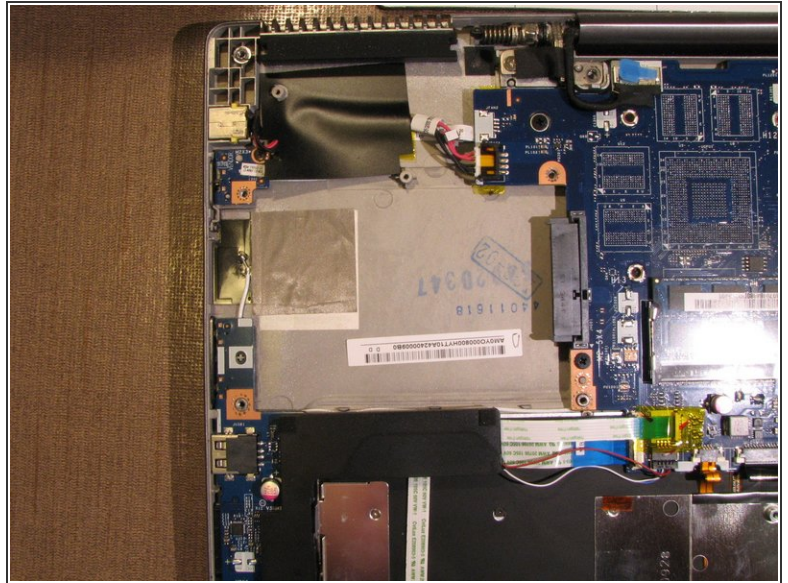
- Remove the battery by lifting it up carefully.

## Step 8 — Hard Drive Removal



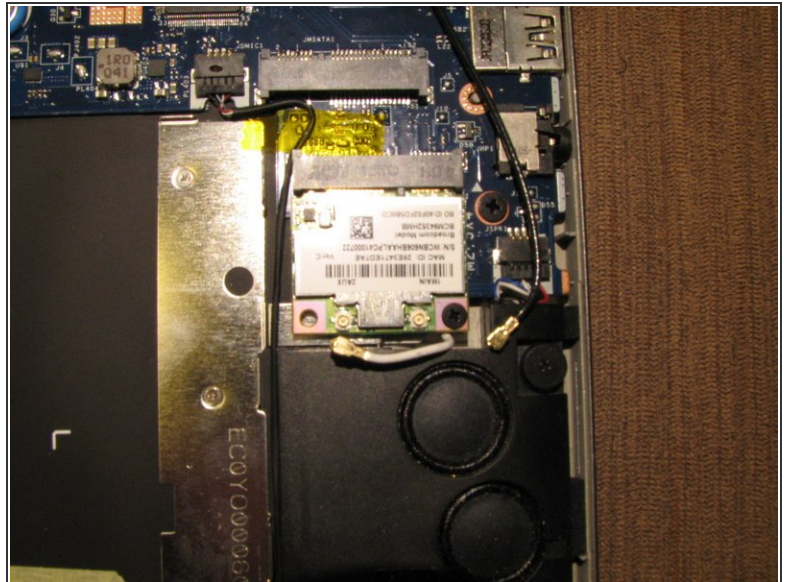
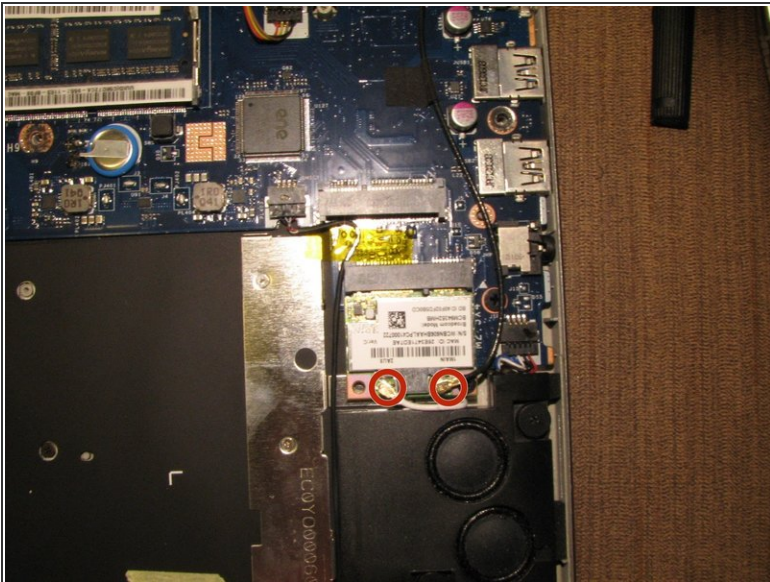
- Remove the 2 top screws on the hard drive.

## Step 9



- Remove the hard drive by slightly lifting it up on the left side and slightly pulling it to the left carefully until it pops out.

## Step 10 — WiFi Card Removal



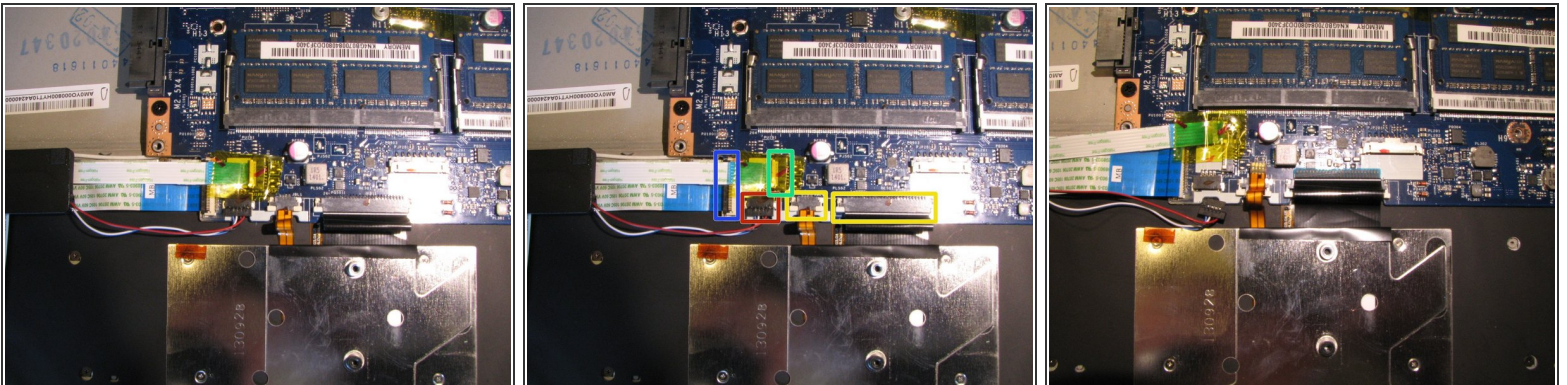
- Disconnect the black and white WiFi antenna wires.

## Step 11



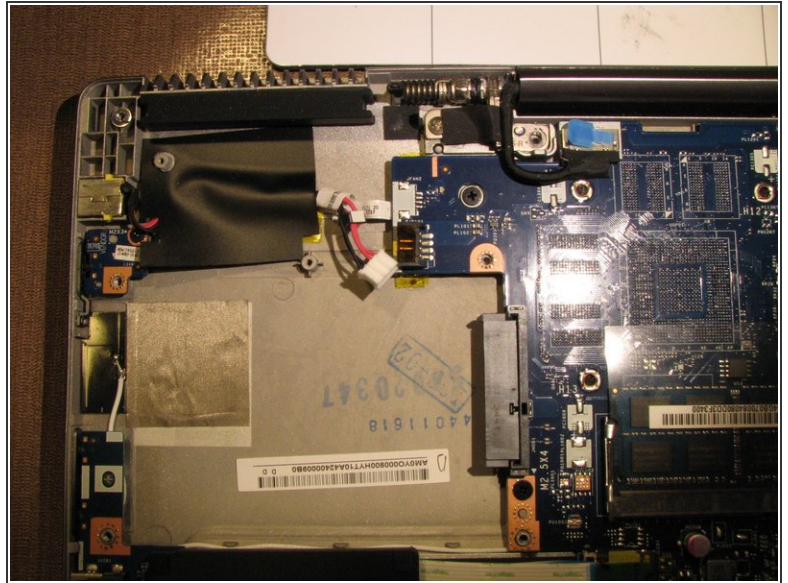
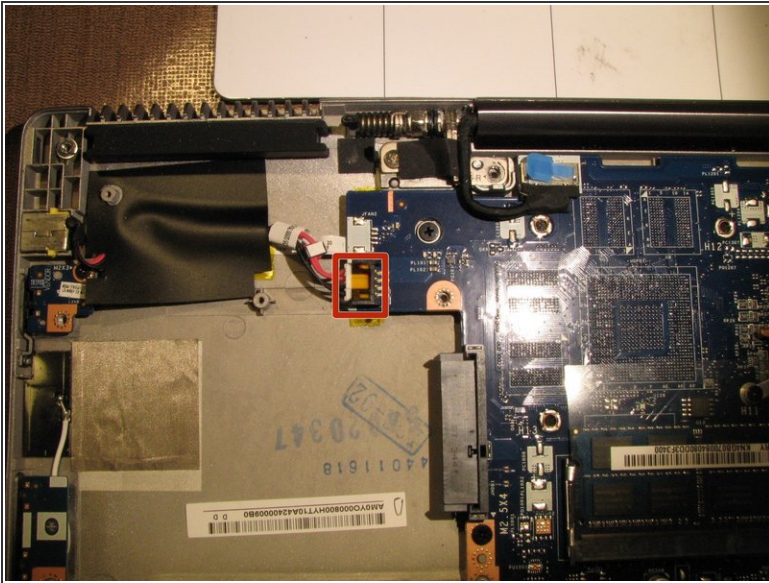
- Unscrew the screw holding down the WiFi card.
- Remove the WiFi card.

## Step 12 — Disconnecting Motherboard Connections



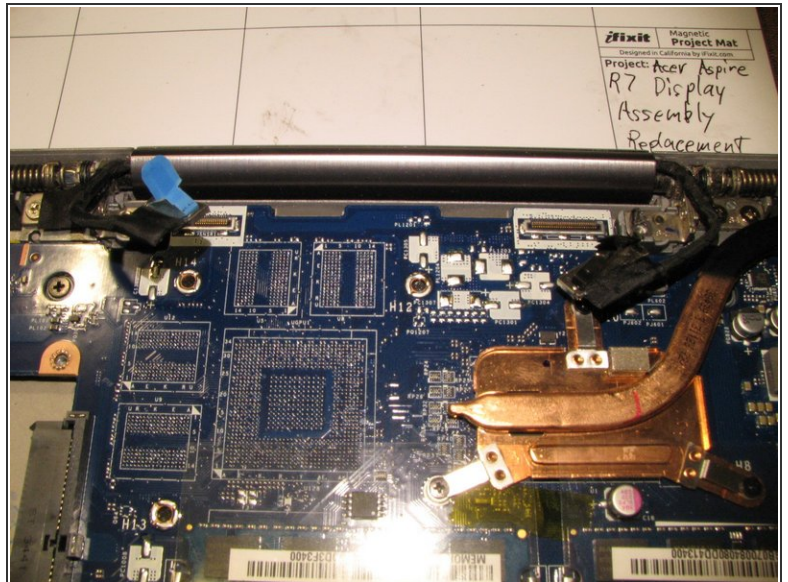
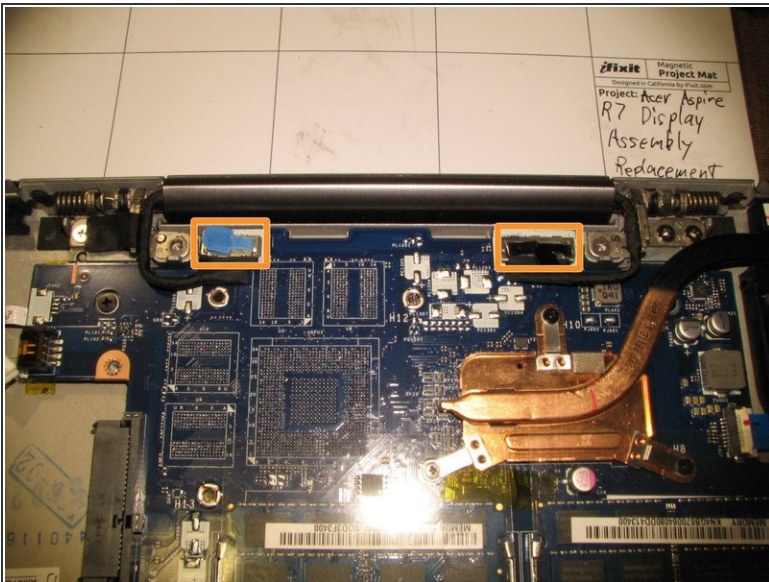
- Disconnect the two keyboard ribbon cables
- Disconnect the left speaker wire.
- Disconnect the front lights ribbon cable.
- Disconnect the I/O board ribbon cable.

## Step 13



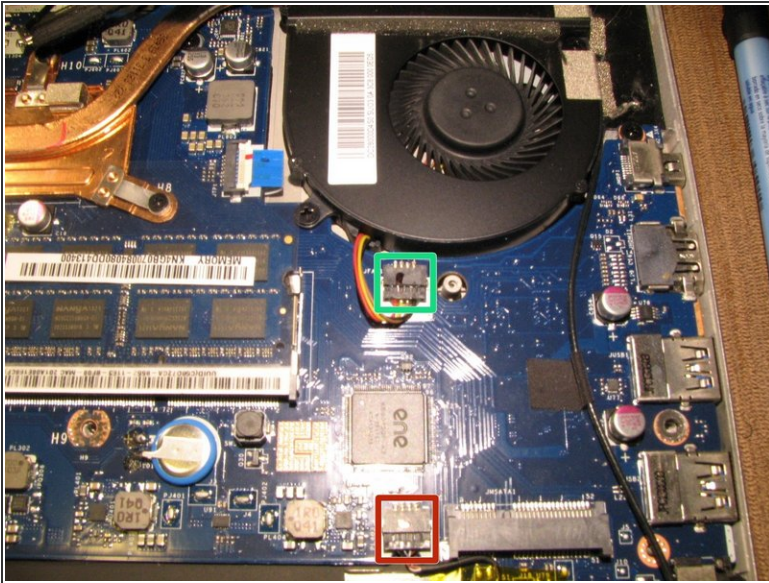
- Disconnect the DC jack cable.

## Step 14



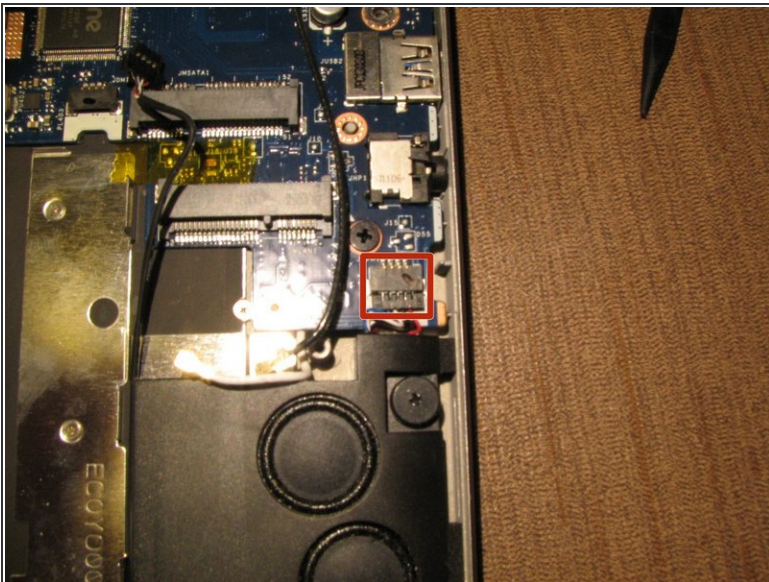
- Disconnect the two display cables.

## Step 15



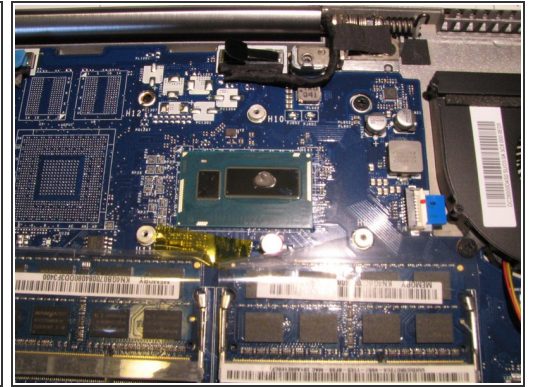
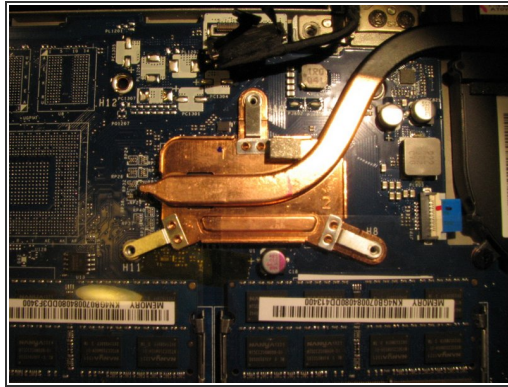
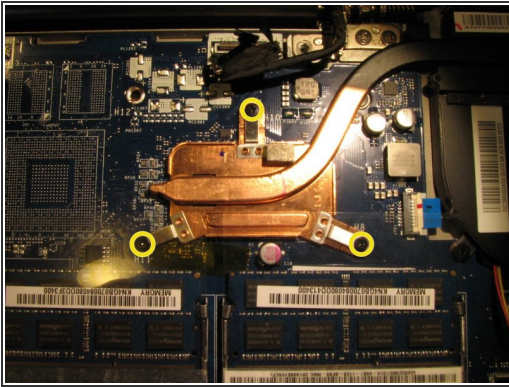
- Disconnect the heat sink fan wire.
- Disconnect the microphone wire.

## Step 16



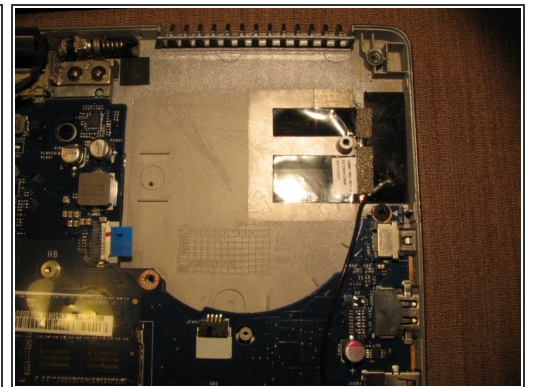
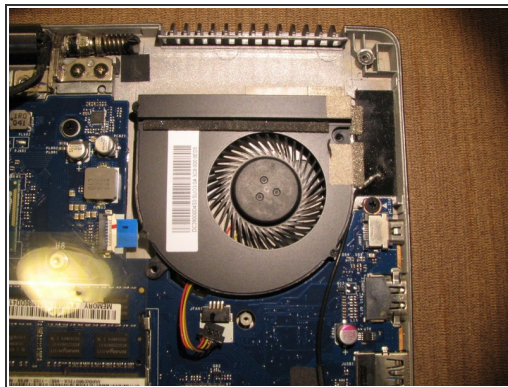
- Disconnect the right speaker wire.

## Step 17 — CPU Heat Sink and Fan Removal



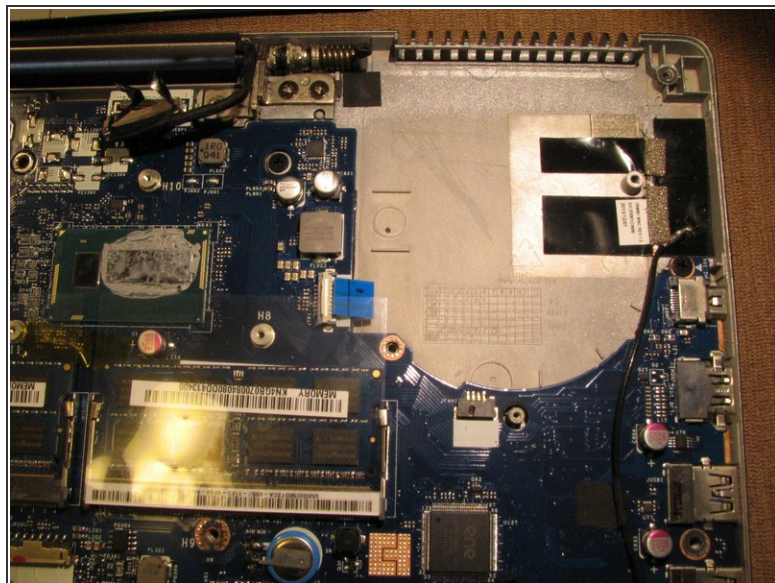
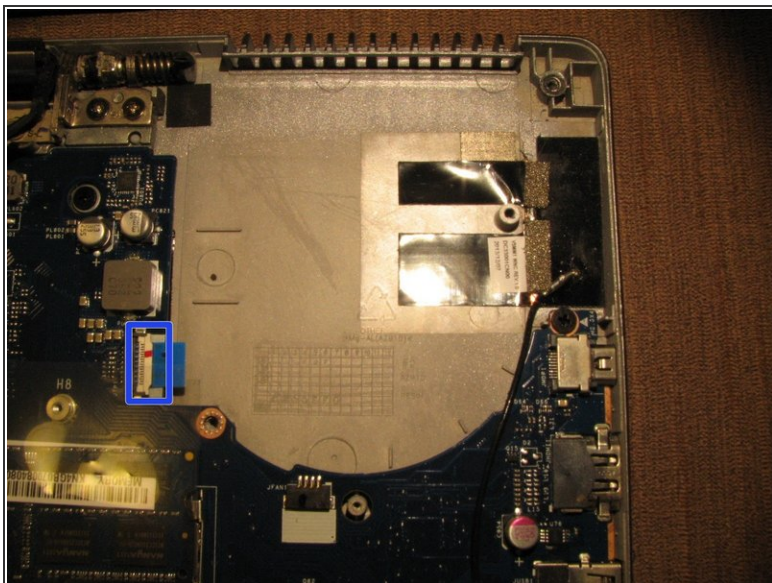
- Remove the 3 heat sink screws.
  - Lift up the heat sink from the motherboard and remove it.
- ⚠ When reinstalling the heat sink during reassembly, make sure to clean off the old thermal paste from the CPU and heat sink with Artic Silver ArtiClean. Then put a grain of rice sized amount of new Artic Silver thermal paste on the CPU so it won't overheat. See 3rd picture.

## Step 18



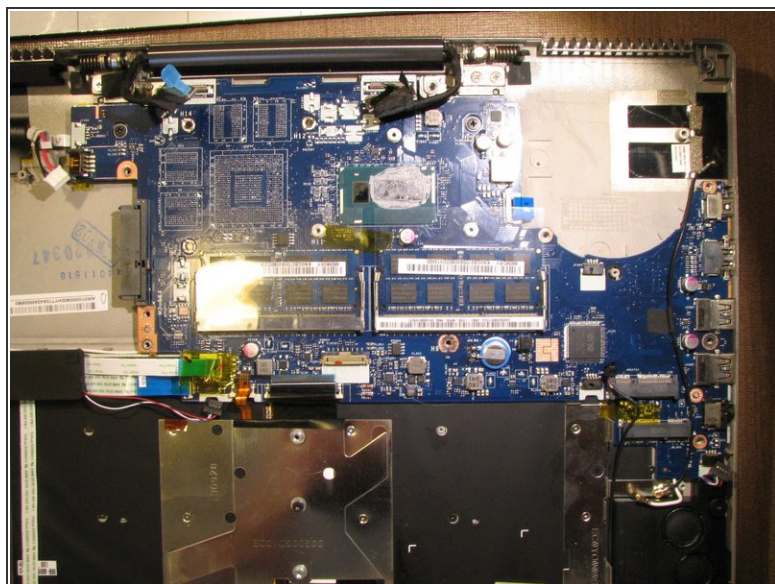
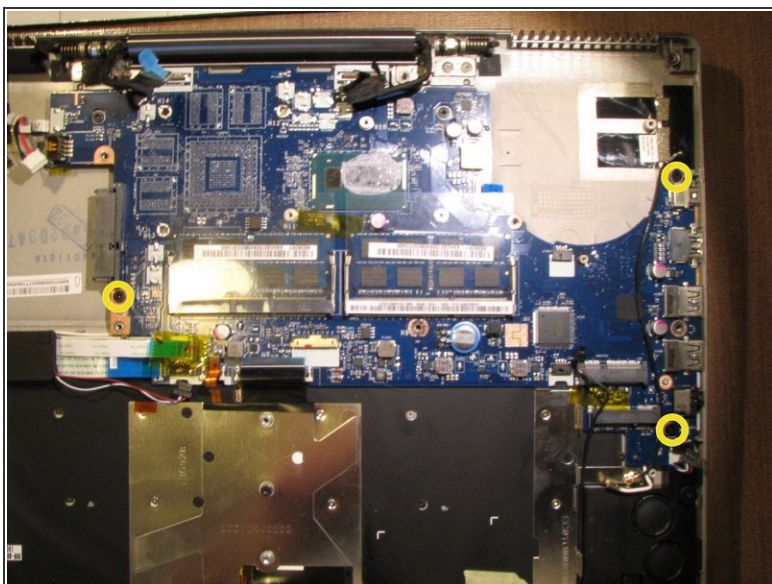
- Remove the 2 heat sink fan screws.
- Remove the heat sink fan.

## Step 19



- Disconnect the trackpad ribbon cable.

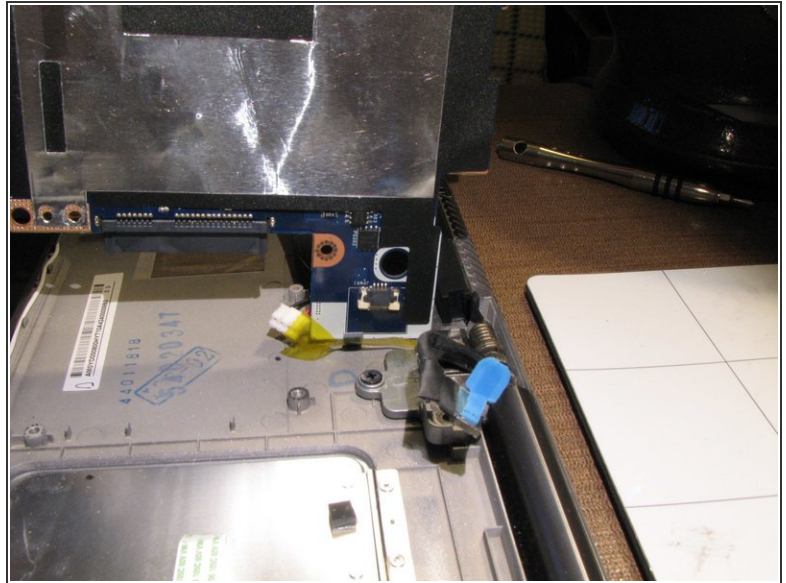
## Step 20 — Motherboard Removal



- Remove the 3 motherboard screws.

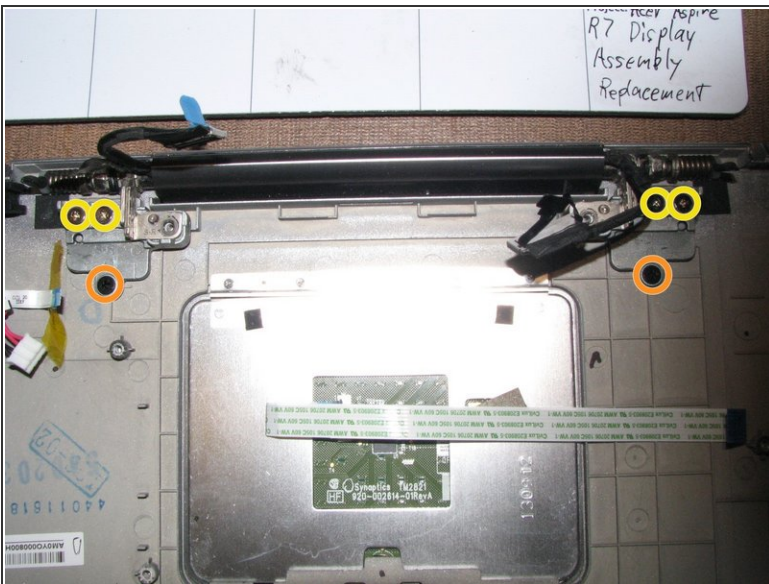
⚠ Remove the motherboard by lifting it up very carefully as the power button ribbon cable is still connected to the left under side of the motherboard. See step 21.

## Step 21



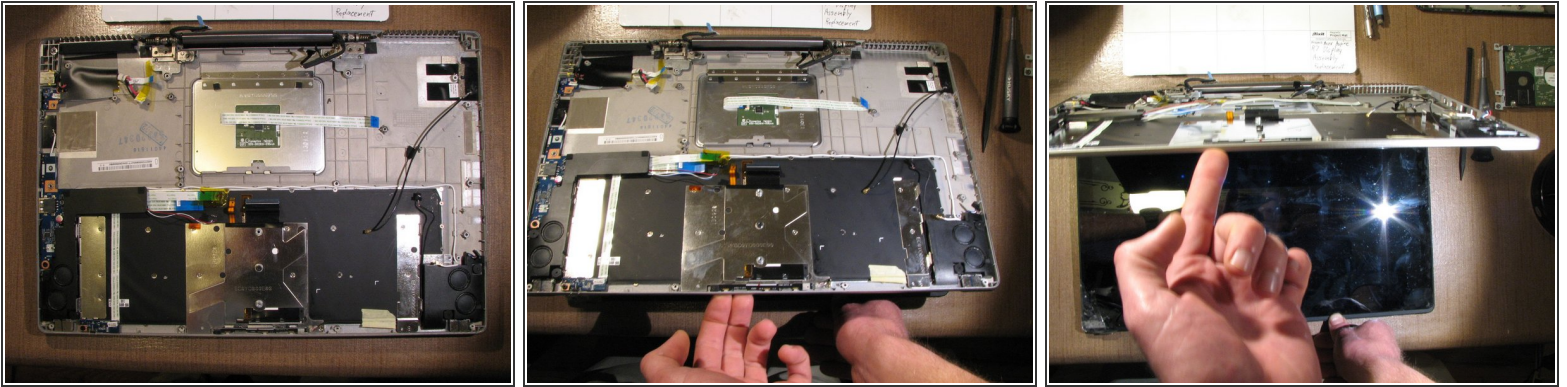
- Remove the power button ribbon cable from the motherboard.

## Step 22 — Display Assembly Removal



- Remove the 4 silver hinge screws.
- Remove the 2 black hinge screws.
- ⓘ The black screws are shorter than the silver screws.

## Step 23



- Carefully open the laptop and the hinges will pop off the frame.

## Step 24



### Optional Step

- Remove the 4 T9 torx screws from the display assembly where the model number and serial numbers stickers are located and swap that panel to the replacement display assembly. Completing this step allows for your computer to retain its original identification information.

## Step 25



- Congratulations! You've completed this guide! :)

To reassemble your device, follow these instructions in reverse order.