



RCA Pro10 Edition Battery Replacement

Outline what you are going to teach someone how...

Written By: Dayne Russell



INTRODUCTION

Outline what you are going to teach someone how to do.

TOOLS:

Plastic Cards (1)

iFixit Opening Tool (1)

Step 1 — Speaker



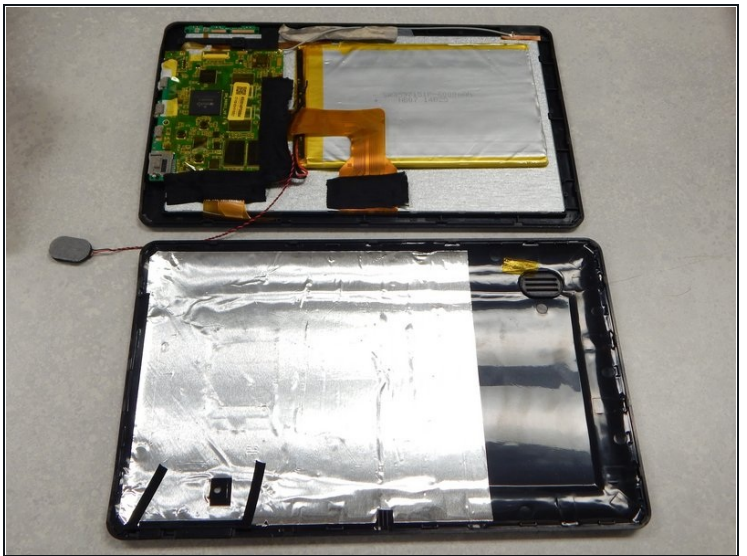
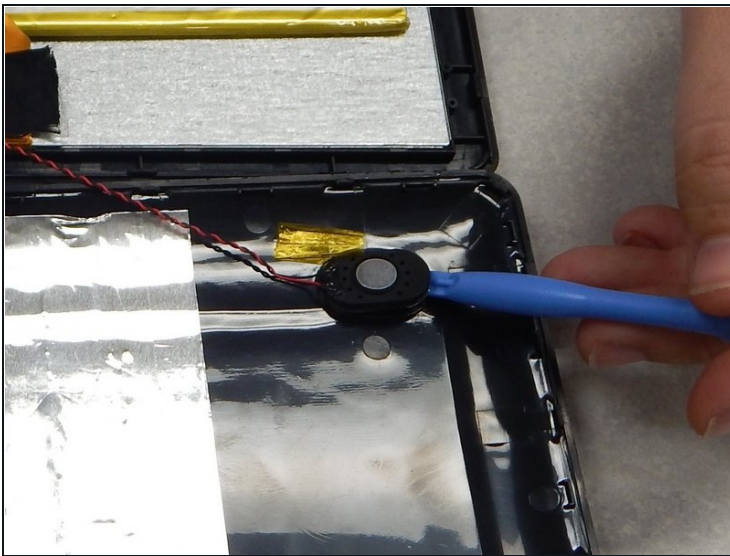
- Using a separating tool, look for a seam in the plastic casing that looks most accessible.
 - Use the prying tool to separate the front and back casing, working your way around the perimeter.
 - Utilize a card tool or a pick to assist in keeping the case separated.
- ☒ To reassemble the device simply align the two casing halves and pinch to snap together or press down on the edges while the device is on a table.

Step 2



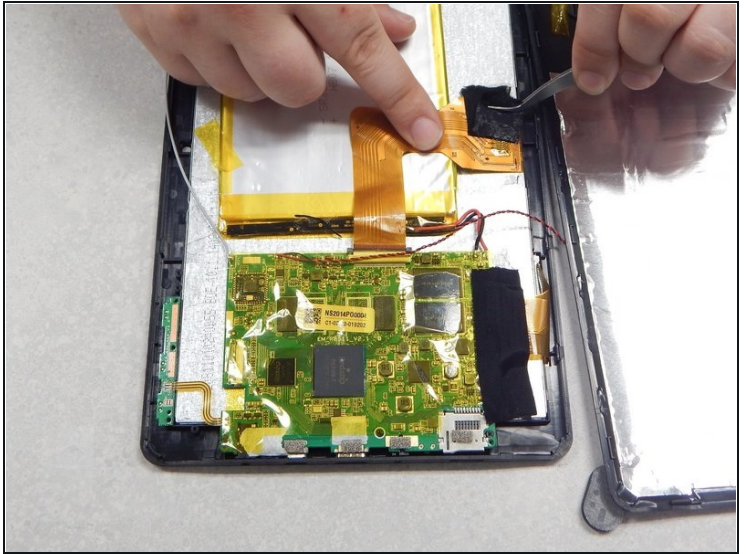
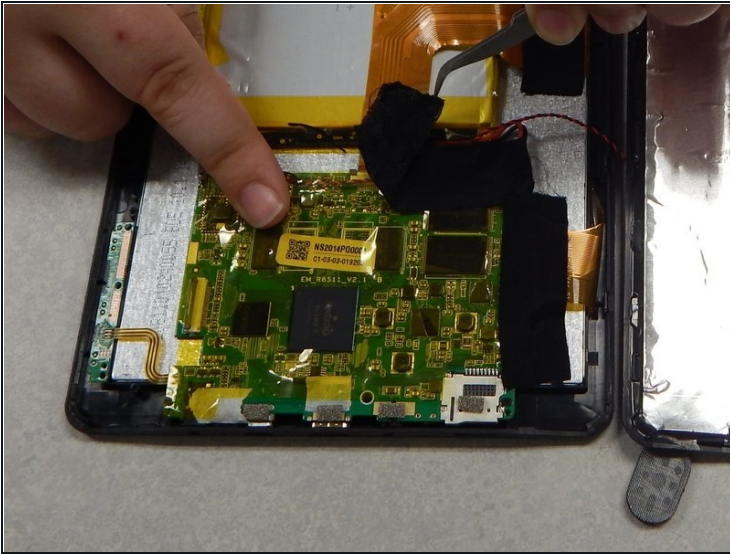
- Flip over the back of the device while keeping it close to the front, the speaker is attached to it.
- Remove the yellow tape securing the speaker to the back casing.

Step 3



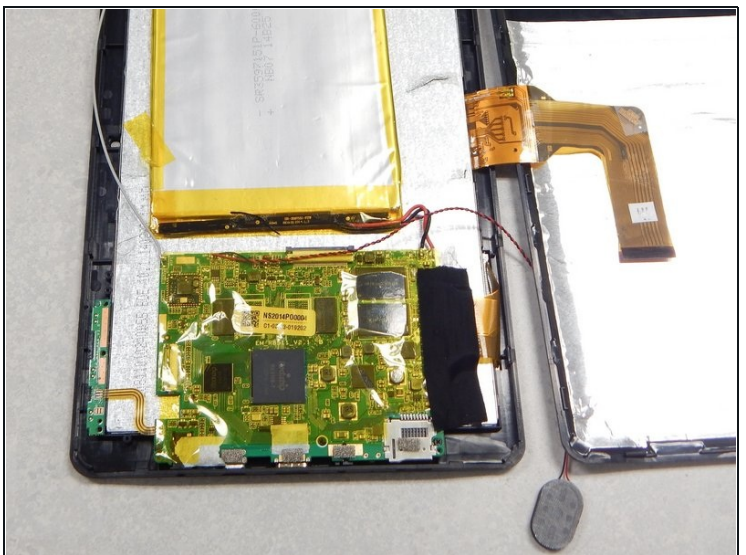
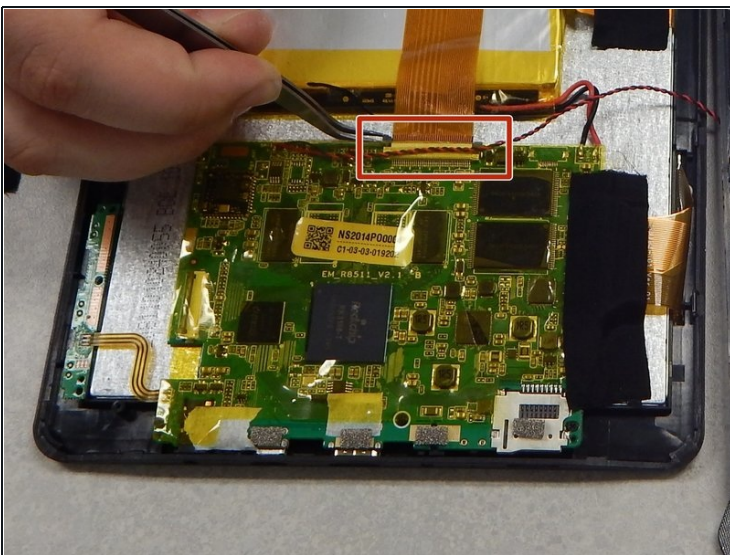
- Use the separating tool to pry the speaker from its surface.
⚠ Use caution when removing the speaker, you may damage the screen.
- Cut or desolder the wires to replace or repair the speaker.

Step 4 — Battery



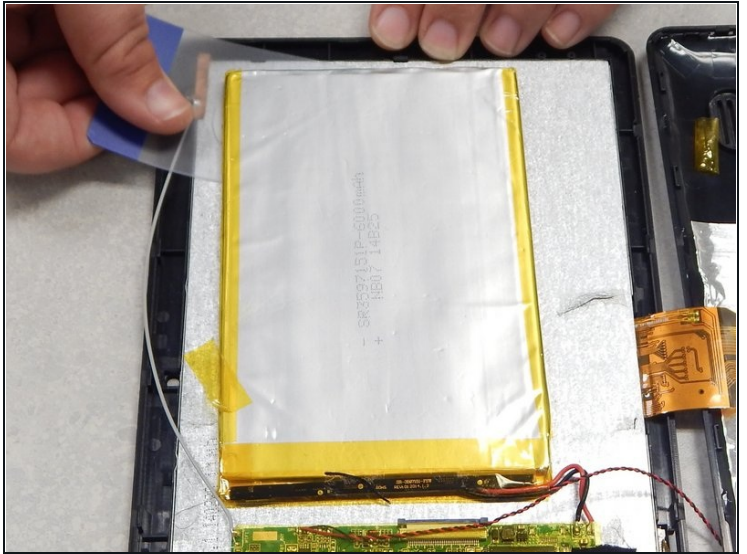
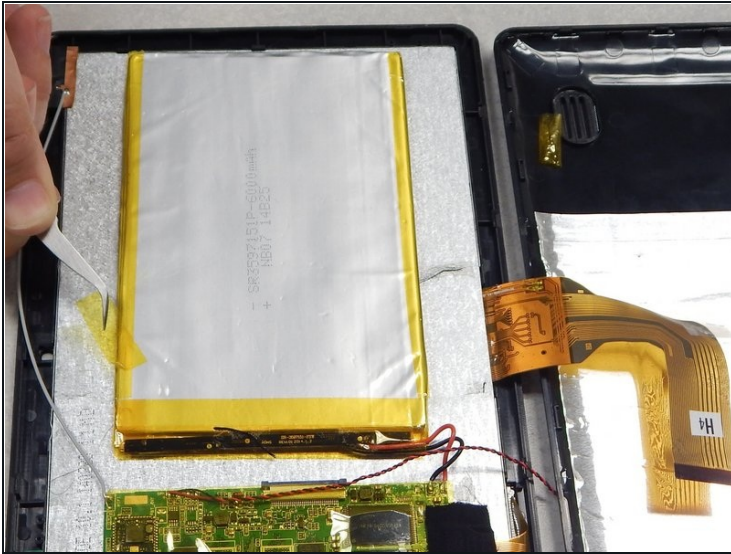
- Peel off the black tape on the battery and main-board.
- Peel off the black tape securing the screen ribbon cable to the back of the screen.
⚠ Use caution to avoid damaging either ribbon cable.

Step 5



- Slide out the ribbon cable lock that is securing the screen ribbon cable.
- Move the ribbon cable out of the way using tape if necessary.

Step 6



- Remove the yellow tape securing the battery to the screen.
- Use a [plastic card](#) or pick to separate the battery from the screen.
⚠ Do not bend or puncture battery, battery is difficult to separate from screen.
- Cut or desolder the wires on the battery to remove or replace it.

To reassemble your device, follow these instructions in reverse order.