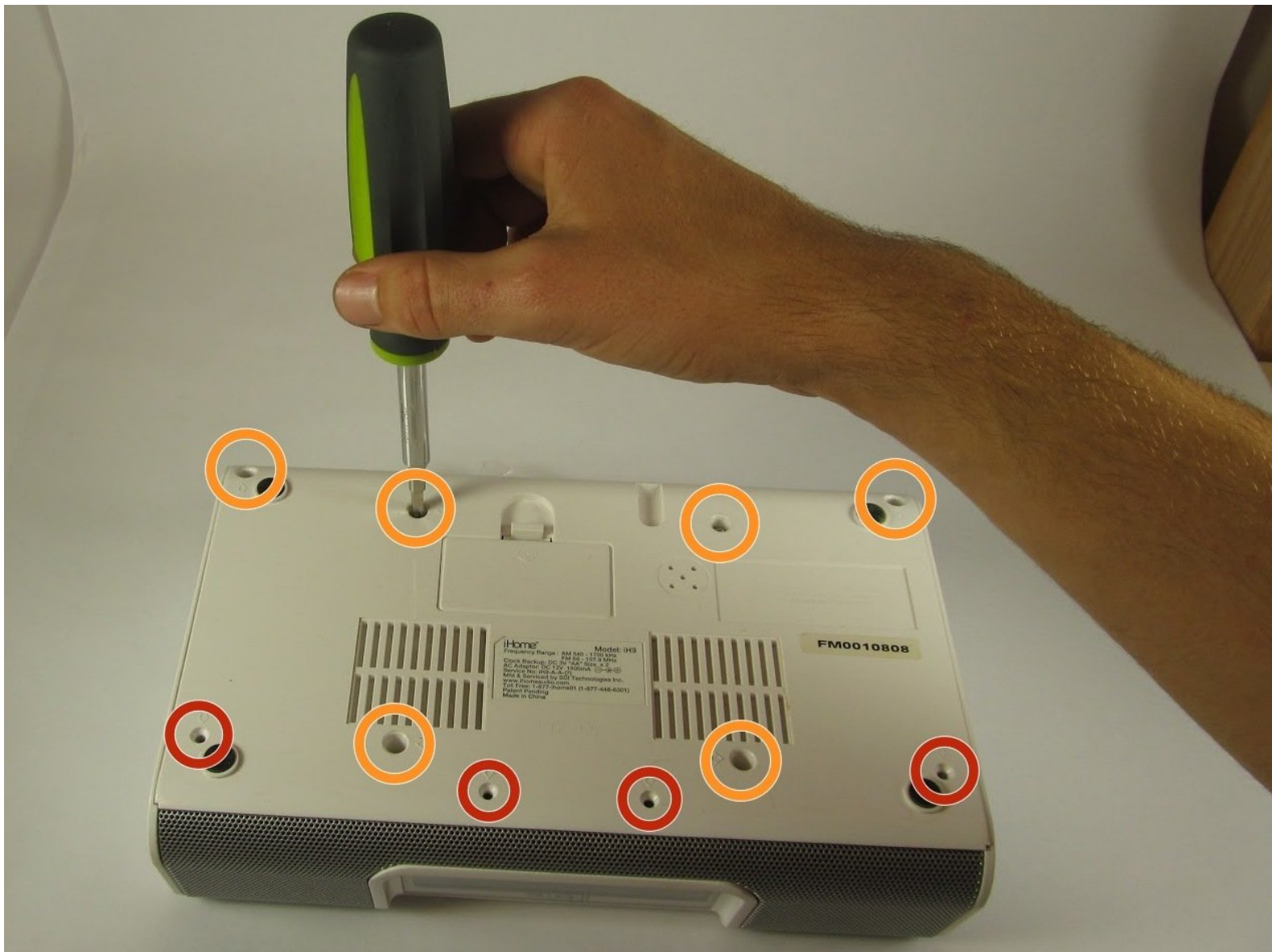




# Opening the iHome iH9

Access the internal parts of the iHome iH9. Prerequisite only guide.

Written By: Curtis Wathne



---

# INTRODUCTION

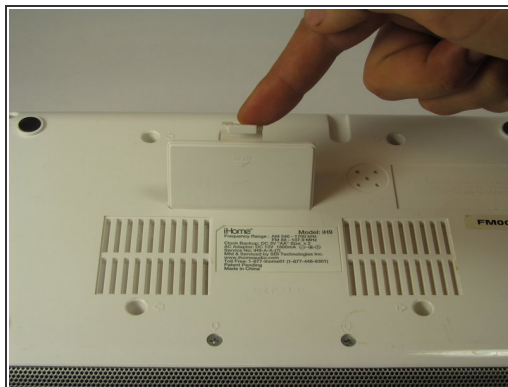
Prerequisite Only.



## TOOLS:

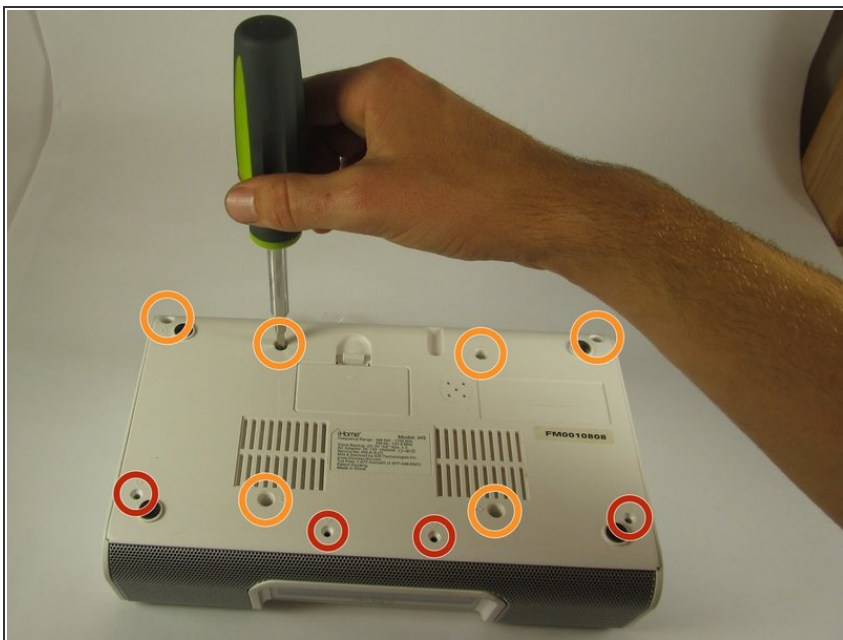
- [iFixit Opening Tools](#) (1)
  - [Phillips #2 Screwdriver](#) (1)
  - [Flush Cutter](#) (1)
-

## Step 1 — Backup Batteries



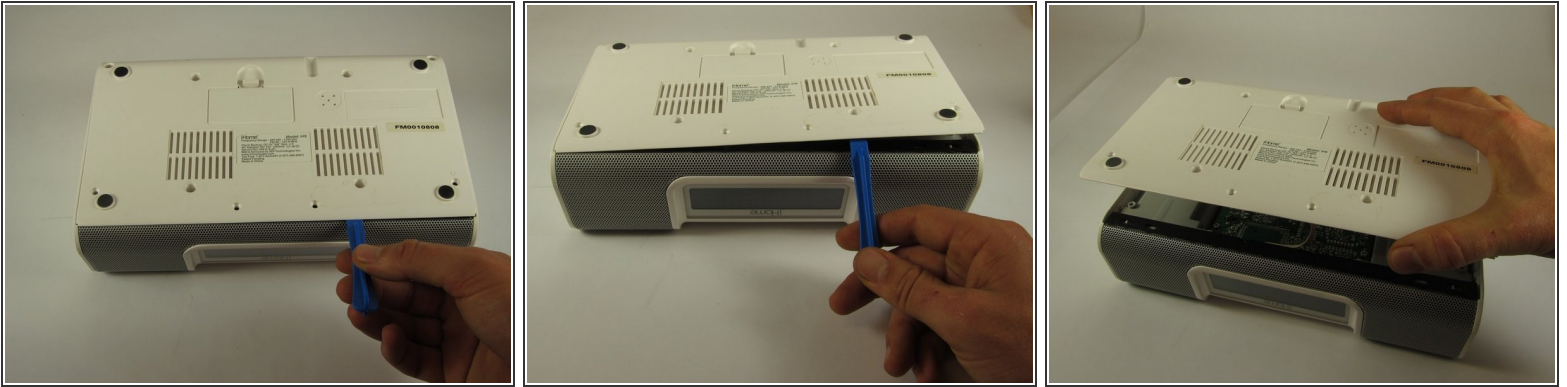
- Pull the tab towards you and lift up to remove the battery cover.
- Remove the two AA batteries.

## Step 2 — Opening the iHome iH9




- Unscrew the four 8mm Phillips #2 screws.
- Unscrew the six 25mm Phillips #2 screws.
- Reinstall the backup battery cover so it is out of the way.

## Step 3

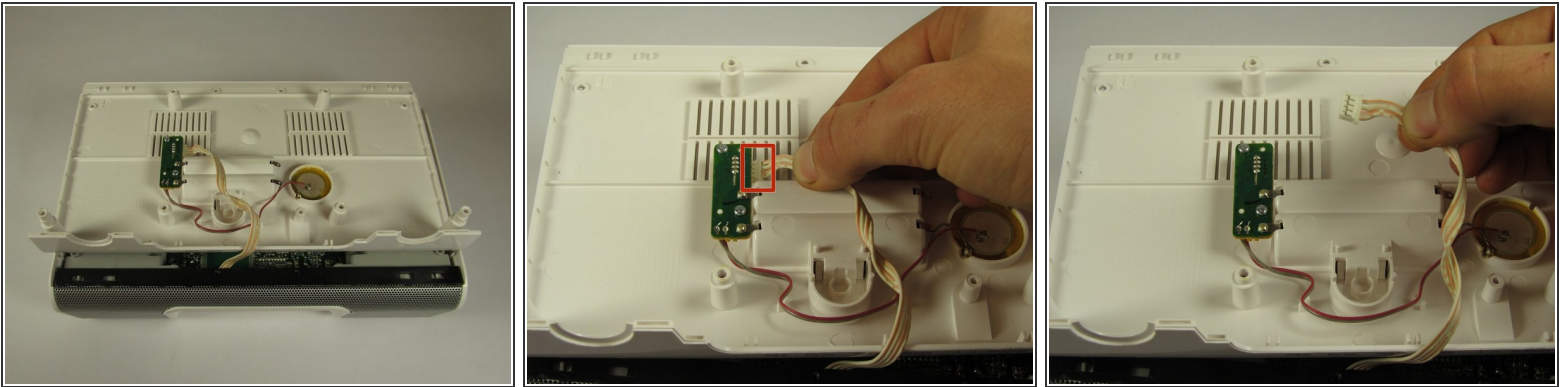


- Pry the backplate up with a plastic opening tool between the back plate and the speaker grill.

 Be careful when lifting the bottom plate up; there is a short white and orange 4-pin connector attached to its underside.

- Lift the bottom plate up while making sure the connector remains attached.

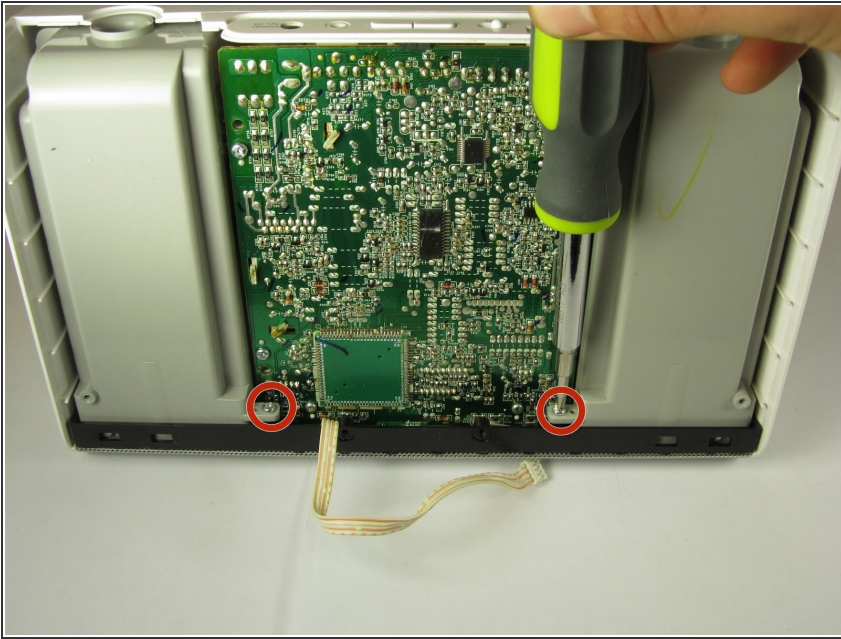
## Step 4



- Use your hands to flip the backing plate away from you and rest it upside down on the iH9.
- Unplug the white and orange 4-pin connector by pulling it in the direction of the wires.
- Set the backing plate aside.

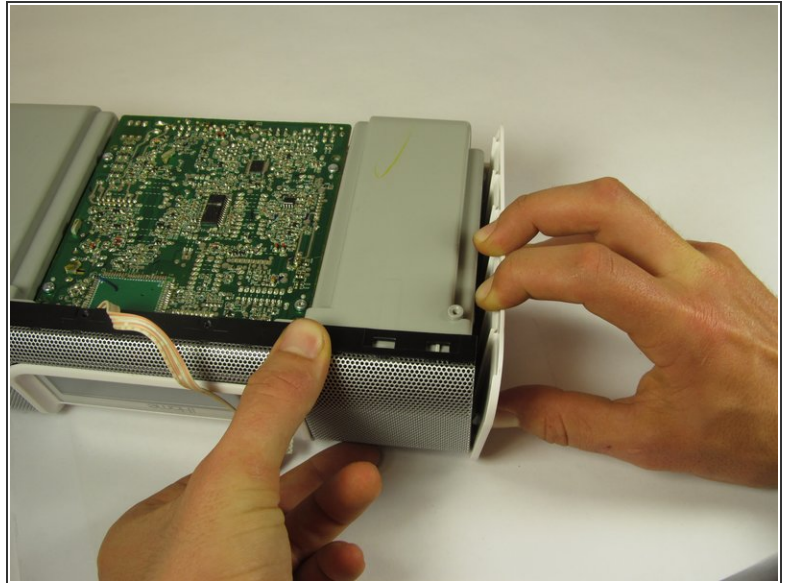
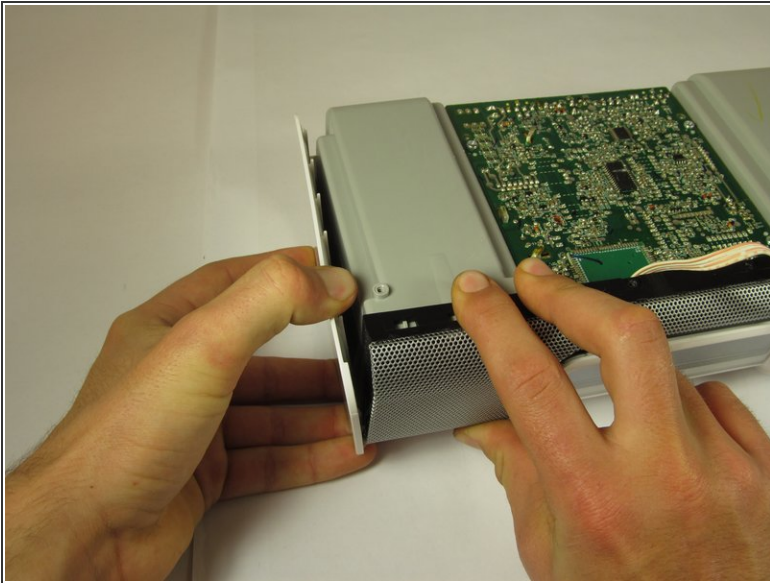


## Step 5



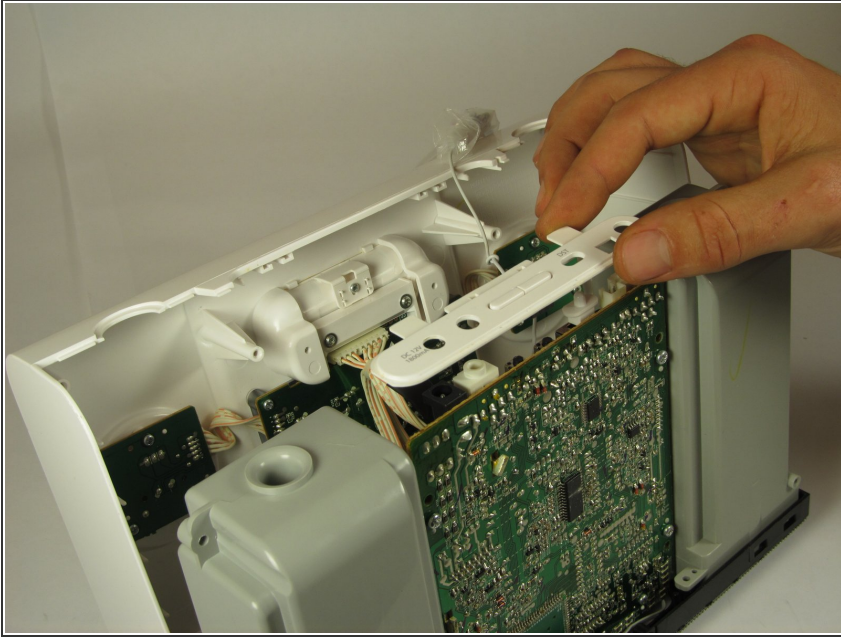
- Place the device so that the speaker grill is face down.
- Remove the two 10mm Phillips #2 screws on interior sides of the speaker housings.

## Step 6



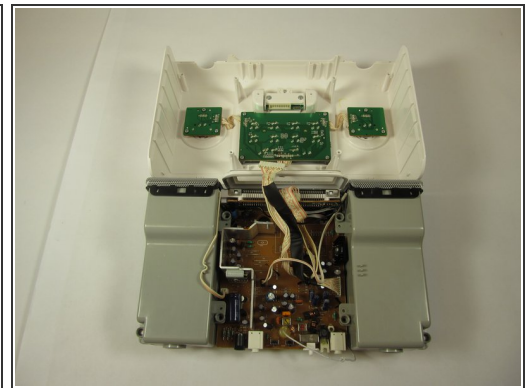
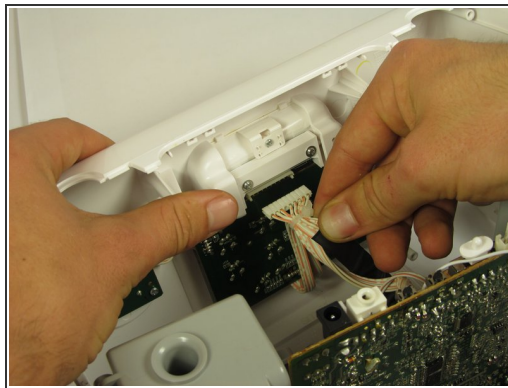
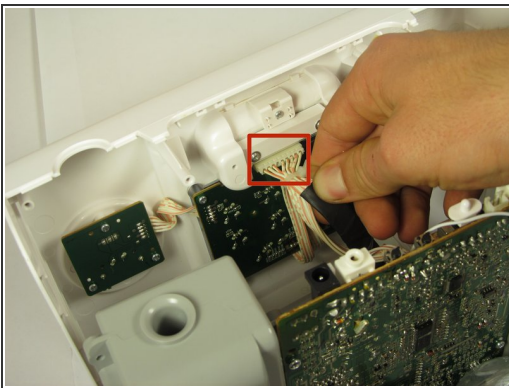
- Place the iH9 upside down.
- ⚠ Wires connect the core assembly to the housing; do not attempt to pull the core assembly completely out.
- Using both hands, pull the housing siding away from the device while simultaneously lifting the motherboard and speaker assembly straight up.
- Repeat for the other side.

## Step 7



- Stand the iH9 on its grill.
- Separate the motherboard and speaker assembly by rocking it back and forth and pulling the assembly towards you.
- Remove the small back panel.

## Step 8



- Firmly pull the wide 9-pin connector with black covering on the underside of the upper housing to unplug it.
- Lay the housing and core assembly flat and close to each one another.

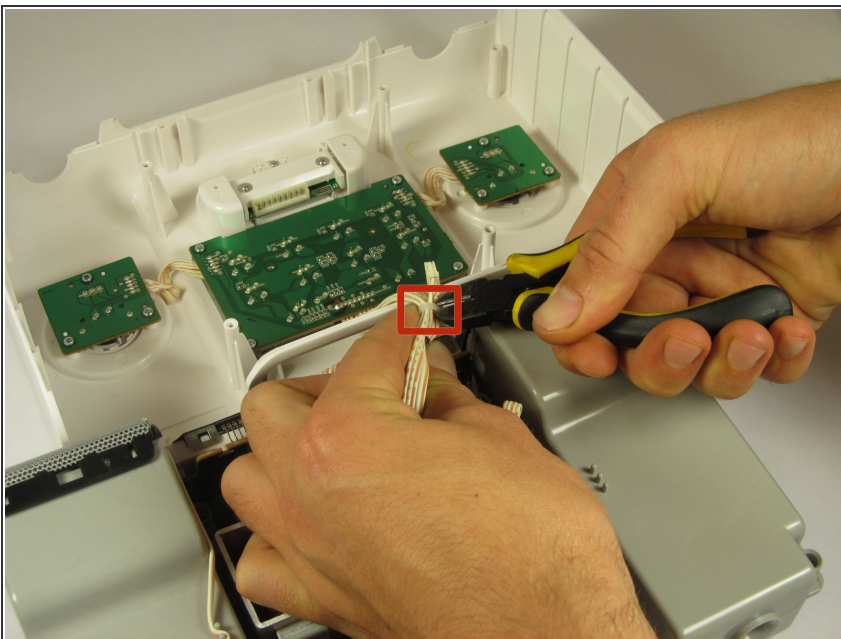


## Step 9



- Unplug the narrow 9-pin connector from the motherboard.

## Step 10



- Cut the zip tie holding the wires together with a wire cutter. The two sides of the device housing are now fully separated.

To reassemble your device, follow these instructions in reverse order.