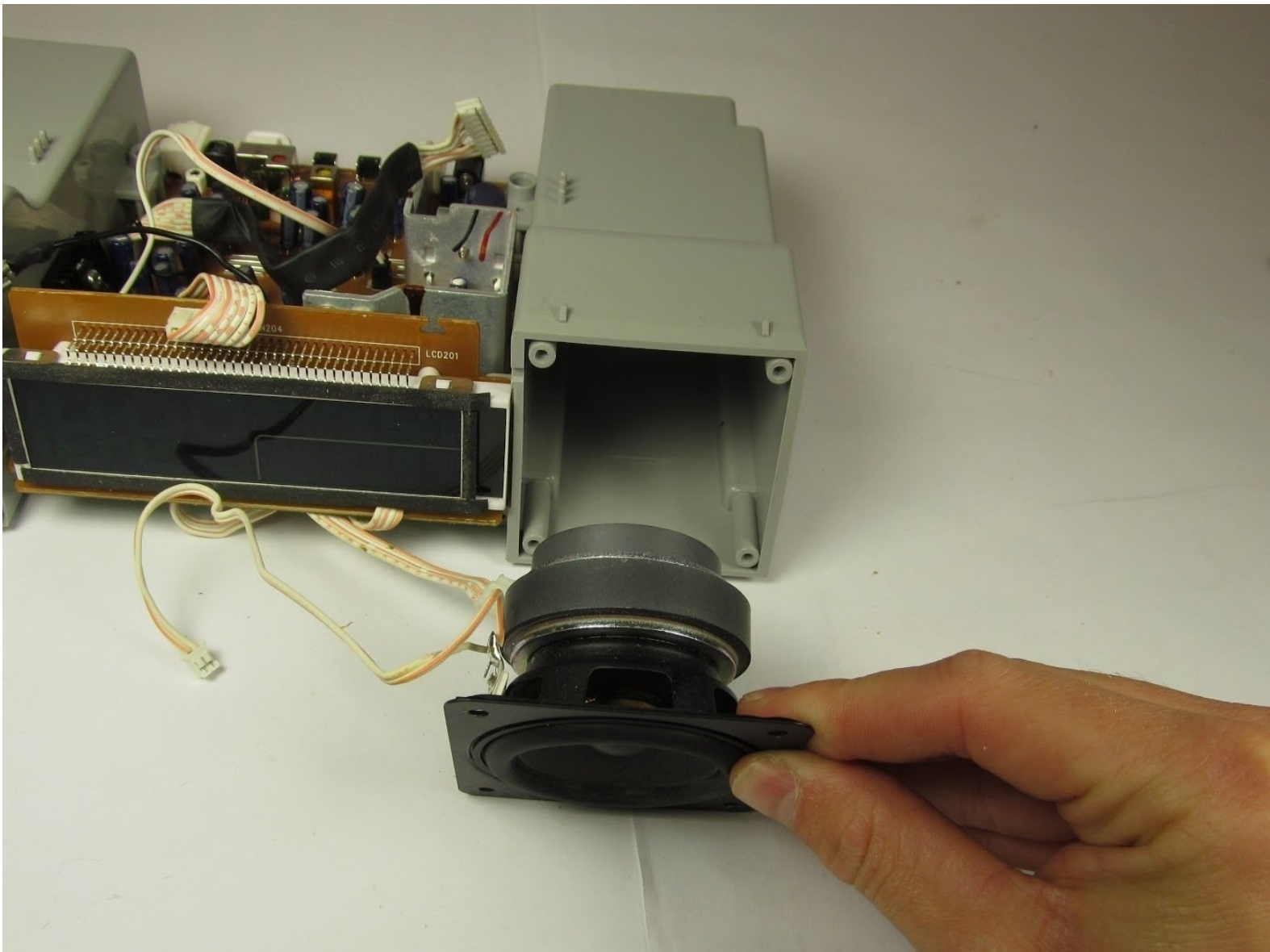




# iHome iH9 Speaker Replacement

Replace either of the two speakers in your iHome iH9.

Written By: Curtis Wathne



## INTRODUCTION

If your iHome isn't playing music or is producing awful sound quality, use this guide to replace the speaker. You must open the device and remove speaker grill to access the speaker.

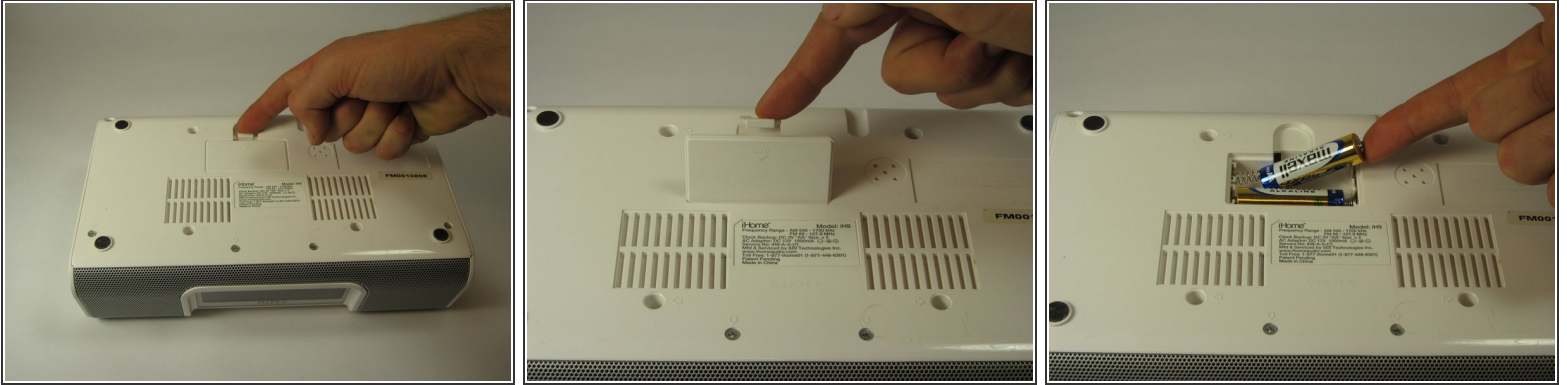
This replacement is best done on a flat surface with plenty of room to work. Opening up the iHome involves the removal of many different screws. It is important to keep track of these screws! You can do this by placing the screws on a magnetic mat in the order of removal. This allows for easy reassembly.



### TOOLS:

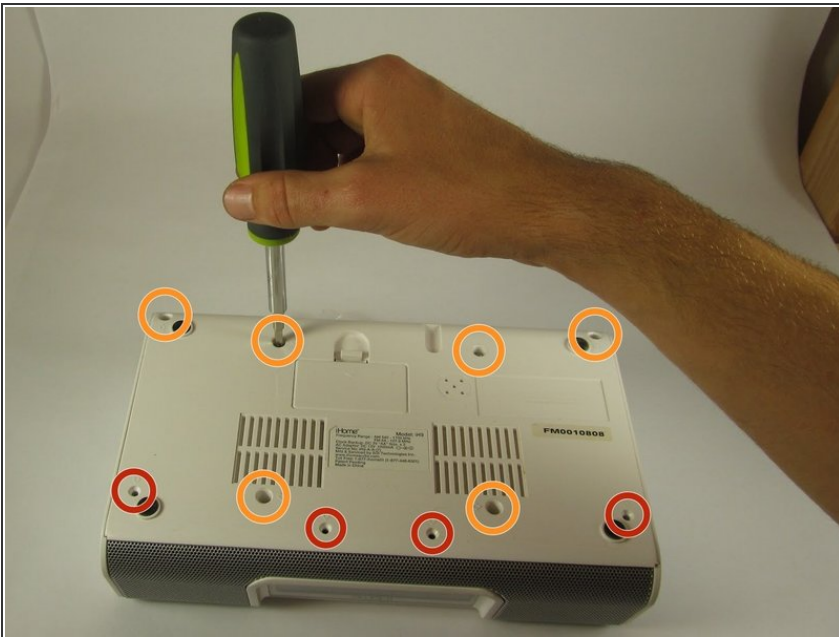
- [Metal Spudger](#) (1)
  - [Phillips #1 Screwdriver](#) (1)
  - [Phillips #2 Screwdriver](#) (1)
  - [iFixit Opening Tools](#) (1)
  - [Flush Cutter](#) (1)
-

## Step 1 — Backup Batteries



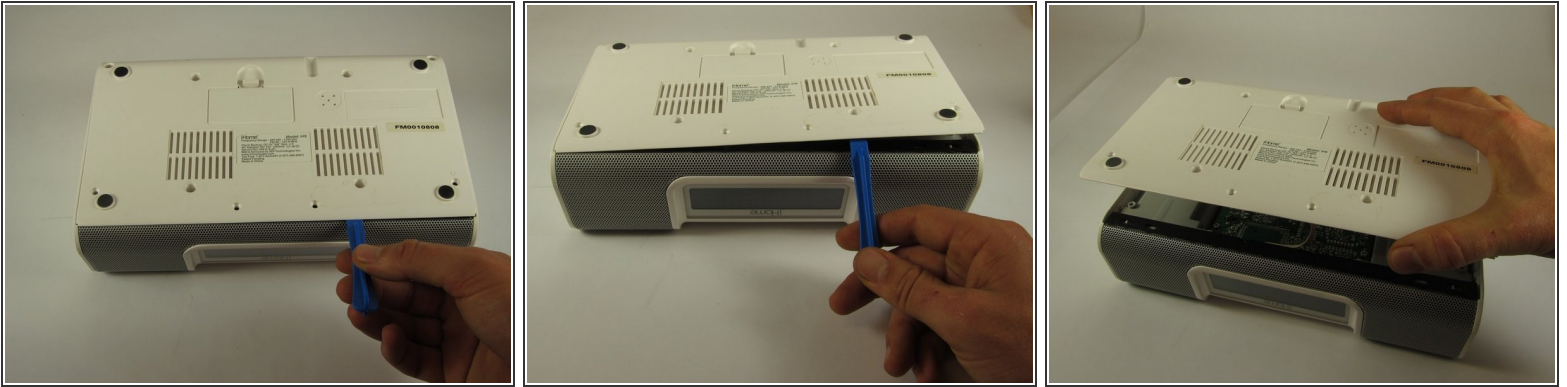
- Pull the tab towards you and lift up to remove the battery cover.
- Remove the two AA batteries.

## Step 2 — Opening the iHome iH9




- Unscrew the four 8mm Phillips #2 screws.
- Unscrew the six 25mm Phillips #2 screws.
- Reinstall the backup battery cover so it is out of the way.

## Step 3

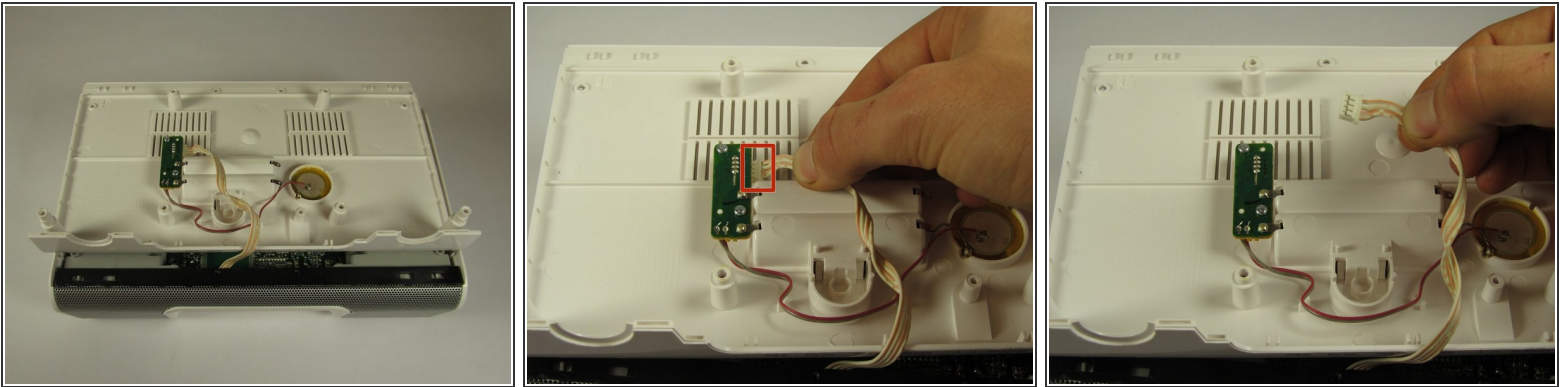


- Pry the backplate up with a plastic opening tool between the back plate and the speaker grill.

 Be careful when lifting the bottom plate up; there is a short white and orange 4-pin connector attached to its underside.

- Lift the bottom plate up while making sure the connector remains attached.

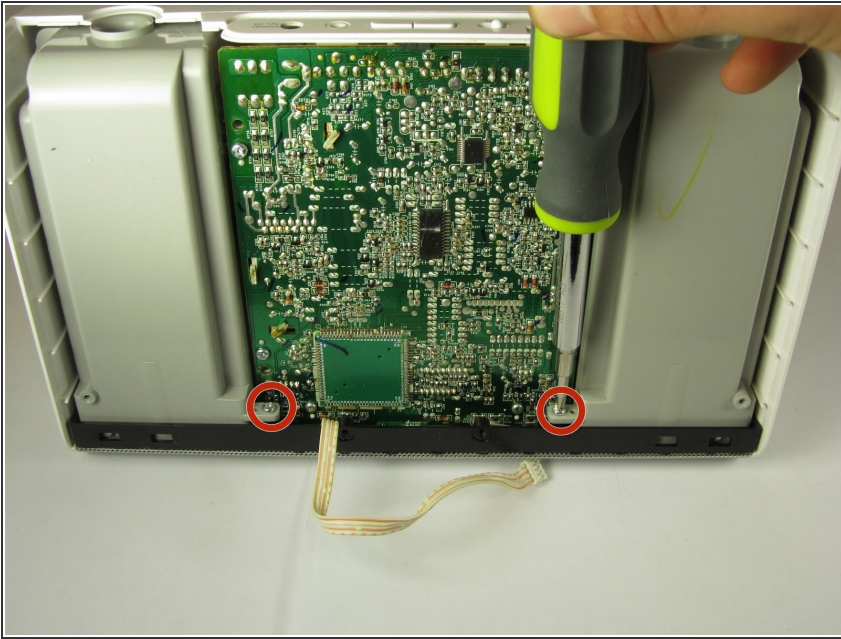
## Step 4



- Use your hands to flip the backing plate away from you and rest it upside down on the iH9.
- Unplug the white and orange 4-pin connector by pulling it in the direction of the wires.
- Set the backing plate aside.

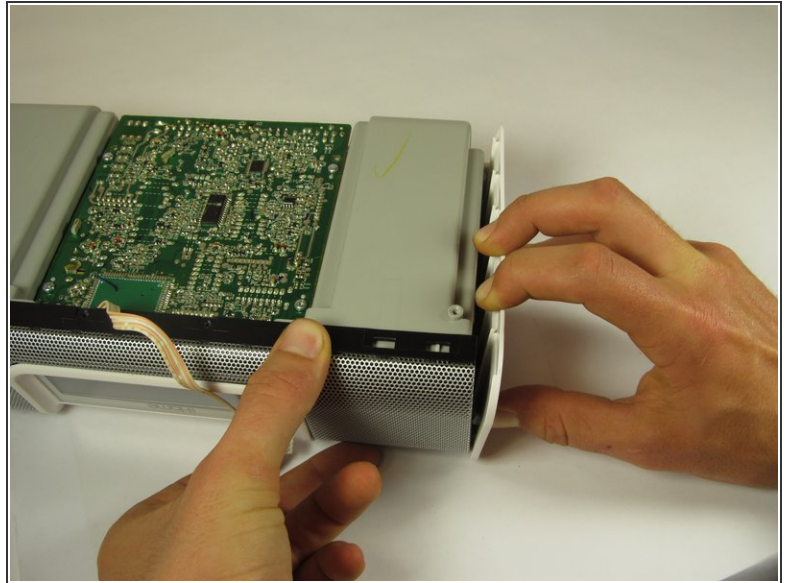
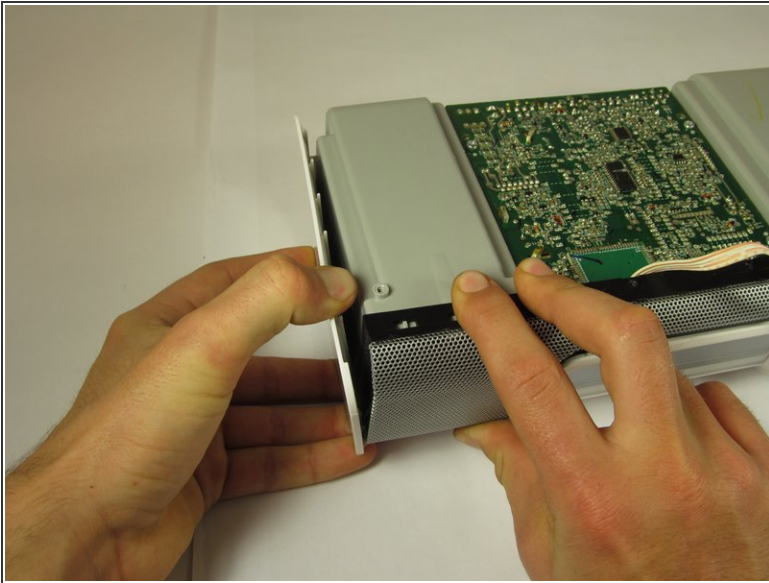


## Step 5



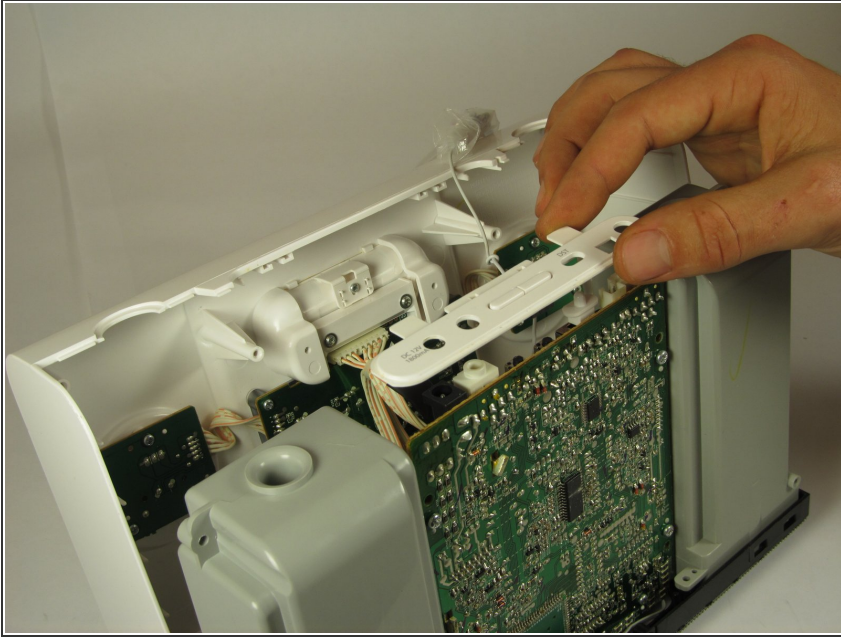
- Place the device so that the speaker grill is face down.
- Remove the two 10mm Phillips #2 screws on interior sides of the speaker housings.

## Step 6



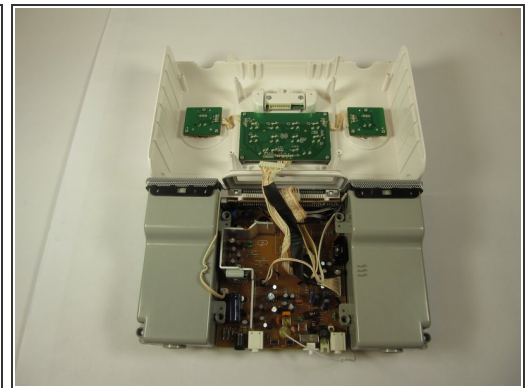
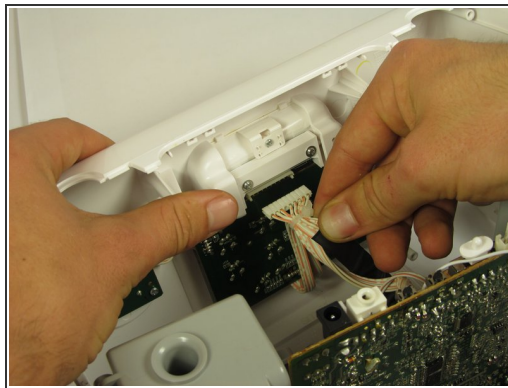
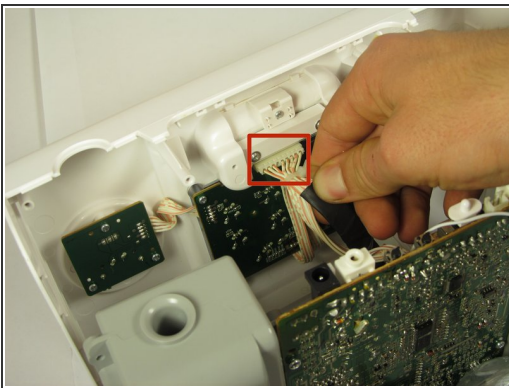
- Place the iH9 upside down.
- ⚠ Wires connect the core assembly to the housing; do not attempt to pull the core assembly completely out.
- Using both hands, pull the housing siding away from the device while simultaneously lifting the motherboard and speaker assembly straight up.
- Repeat for the other side.

## Step 7



- Stand the iH9 on its grill.
- Separate the motherboard and speaker assembly by rocking it back and forth and pulling the assembly towards you.
- Remove the small back panel.

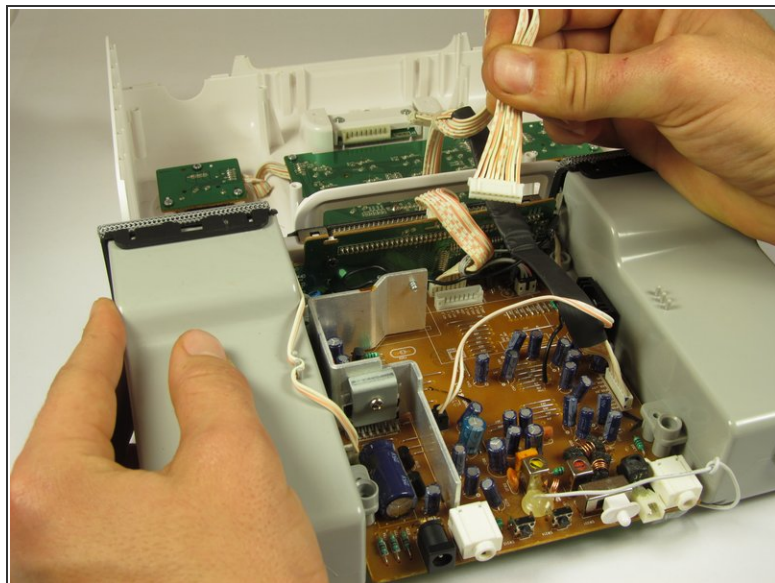
## Step 8



- Firmly pull the wide 9-pin connector with black covering on the underside of the upper housing to unplug it.
- Lay the housing and core assembly flat and close to each one another.

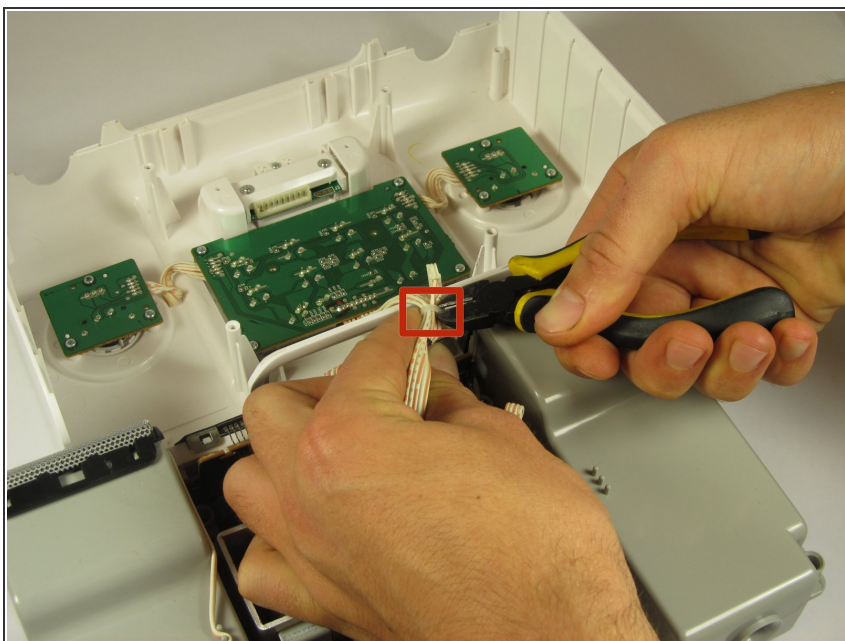


## Step 9



- Unplug the narrow 9-pin connector from the motherboard.

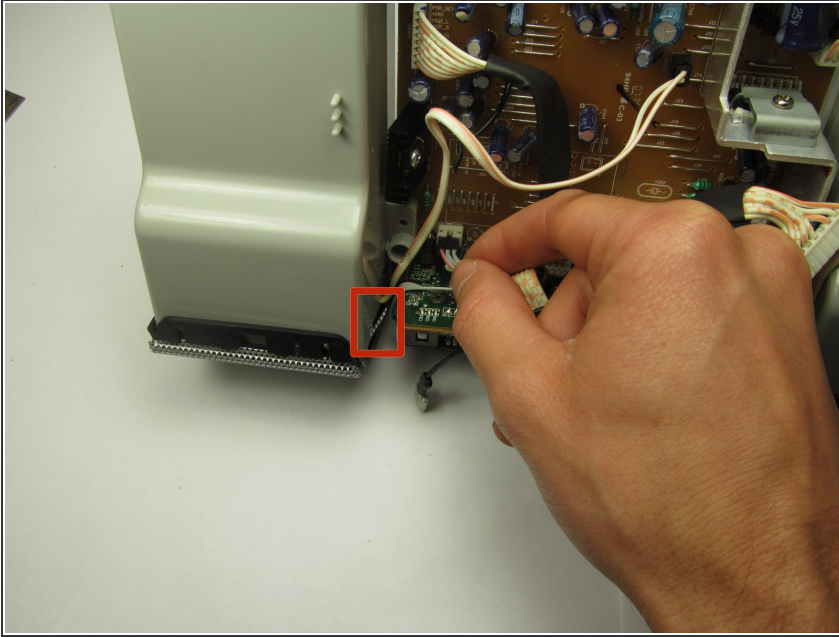
## Step 10



- Cut the zip tie holding the wires together with a wire cutter. The two sides of the device housing are now fully separated.

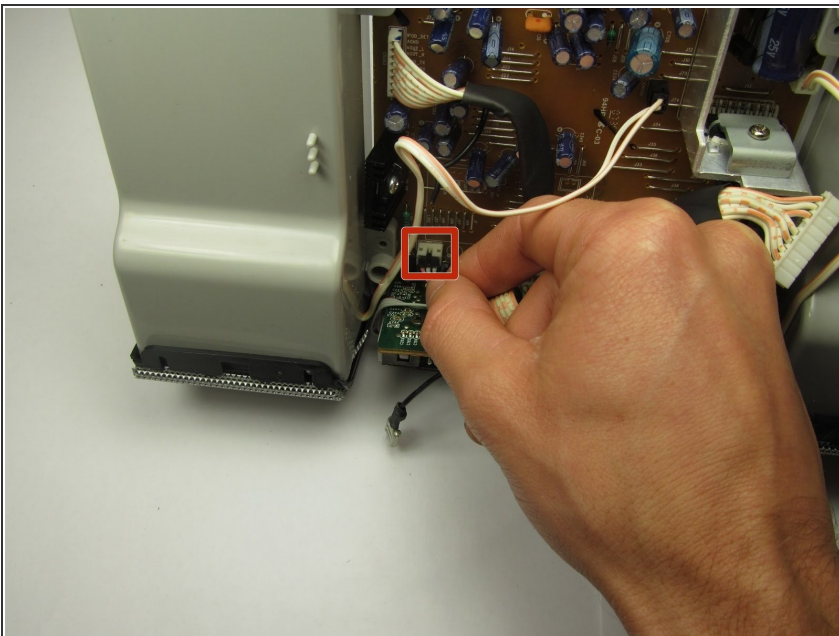


## Step 11 — Speaker



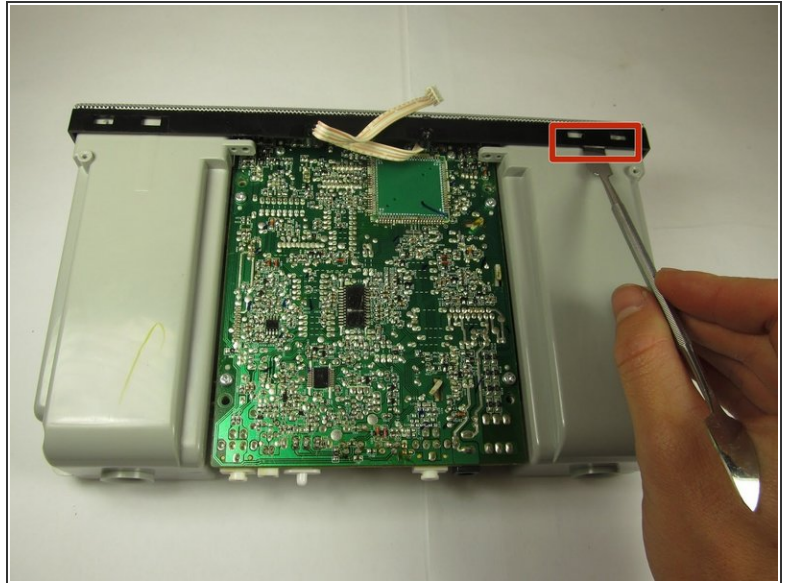
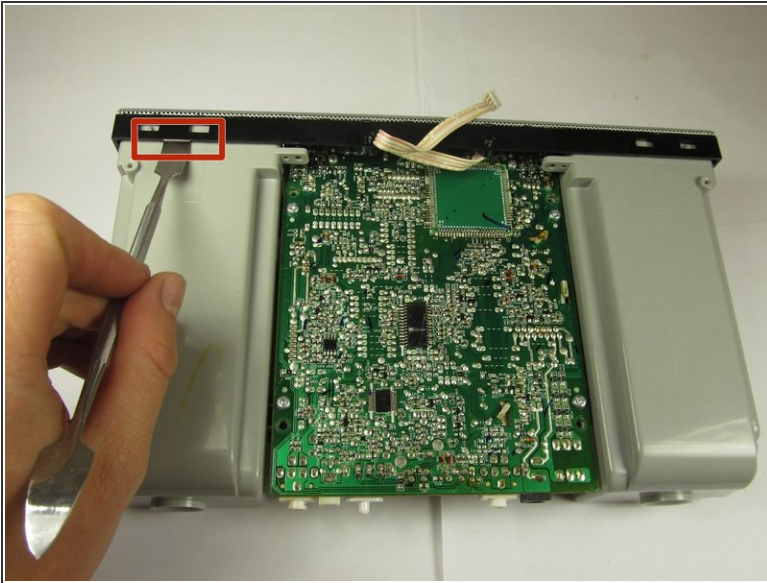
- Set the iHome iH9 speaker and mother board assembly upright on the speaker grill.
- Remove the black ground wire from the grill by pulling in the direction of the wire.
- ⓘ The wire is located next to the left speaker housing.

## Step 12



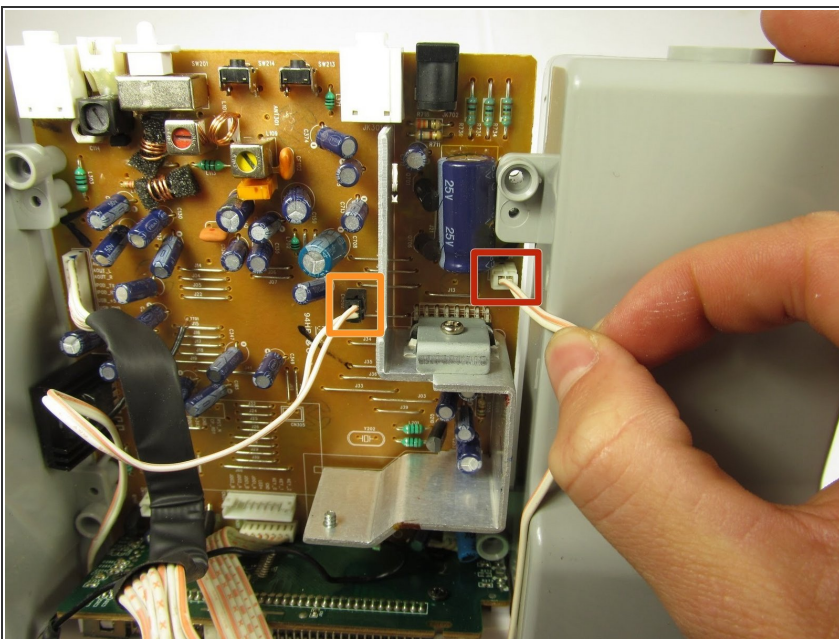
- Unplug the 3-pin connector for the infrared sensor by pulling in the direction of the cable.
- ⓘ The wire is near the ground wire tab.

## Step 13



- Set the iH9 flat down with the solder side of the motherboard up and the speaker grill facing away.
- With a nylon or metal spudger, pry the speaker grill up and forward from the two retaining flanges on the left and right speaker housings.
- Set the speaker grill aside.

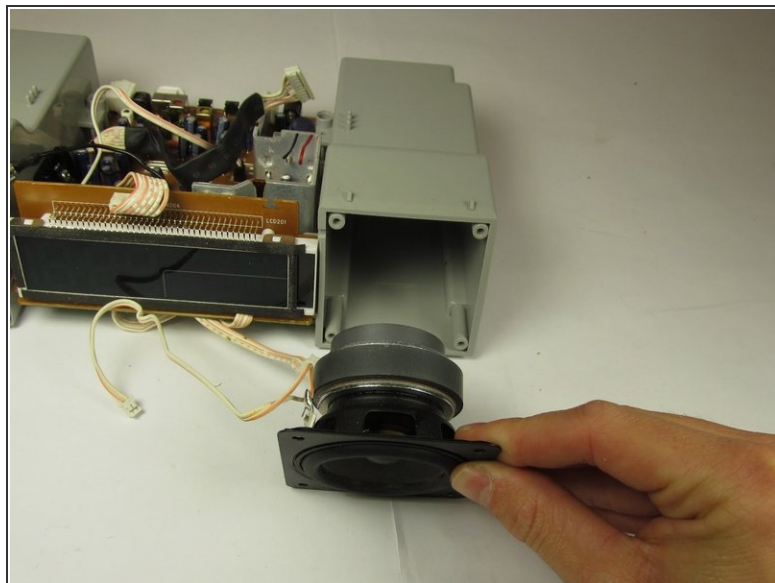
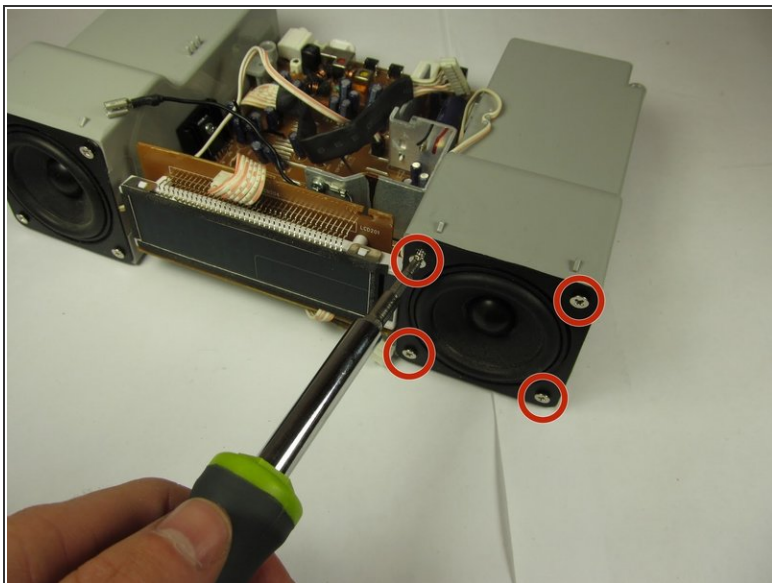
## Step 14



- Flip the iH9 back over, exposing the motherboard components.
- For the right speaker, unplug the speaker wire by pulling in the direction of the wire (pictured).
- For the left speaker, unplug the speaker wire by pulling in the direction of the wire.

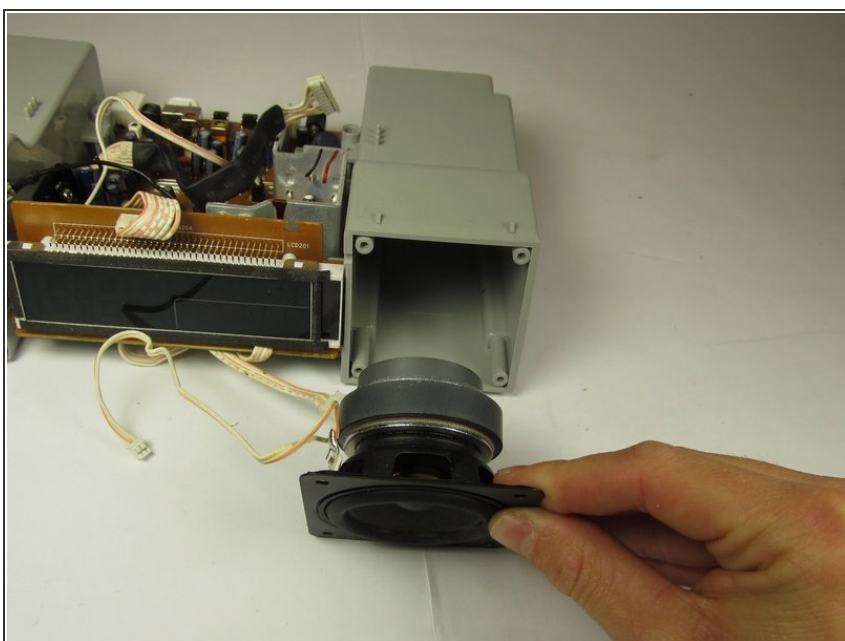


## Step 15



- Remove the four 14mm Phillips #1 screws on each of the speaker's four corners.
- ⓘ The right speaker is pictured; the same procedure is necessary to replace the left speaker.
- Remove the speaker.

## Step 16



- Remove the speaker.



To reassemble your device, follow these instructions in reverse order.