



# Sega Genesis Power LED Replacement

This repair guide will give a walk through on...

Written By: Anthony Porchia



---

## INTRODUCTION

This repair guide wil give a walk through on how to replace the power LED in a Sega Genesis.

---



### TOOLS:

- [Phillips #1 Screwdriver](#) (1)
  - [5mm 3.6v LED](#) (1)
-

## Step 1 — Outer Case



- Remove the six screws from the underside of the console with a Phillips #1 screwdriver.

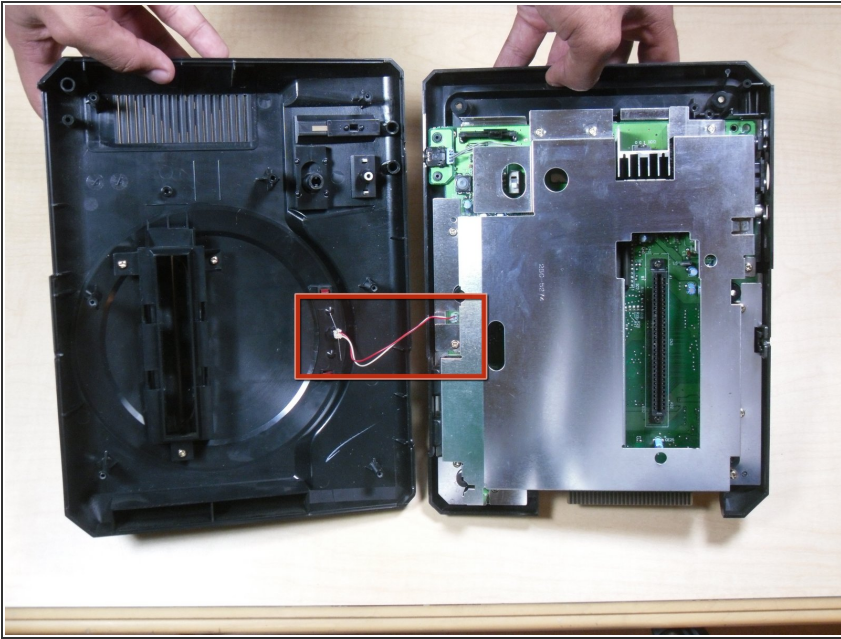
## Step 2



- Flip the Sega Genesis upright.



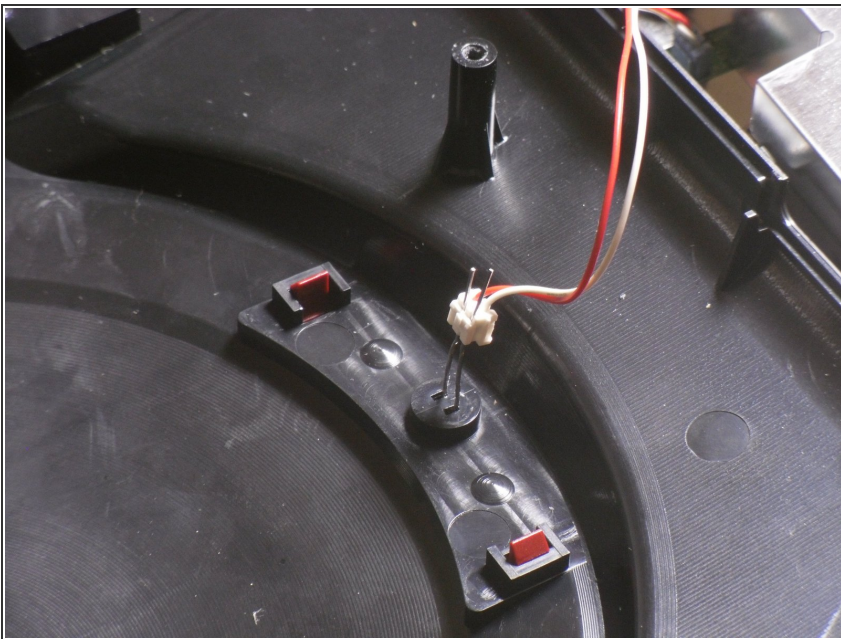
### Step 3



- Gently lift the top casing.

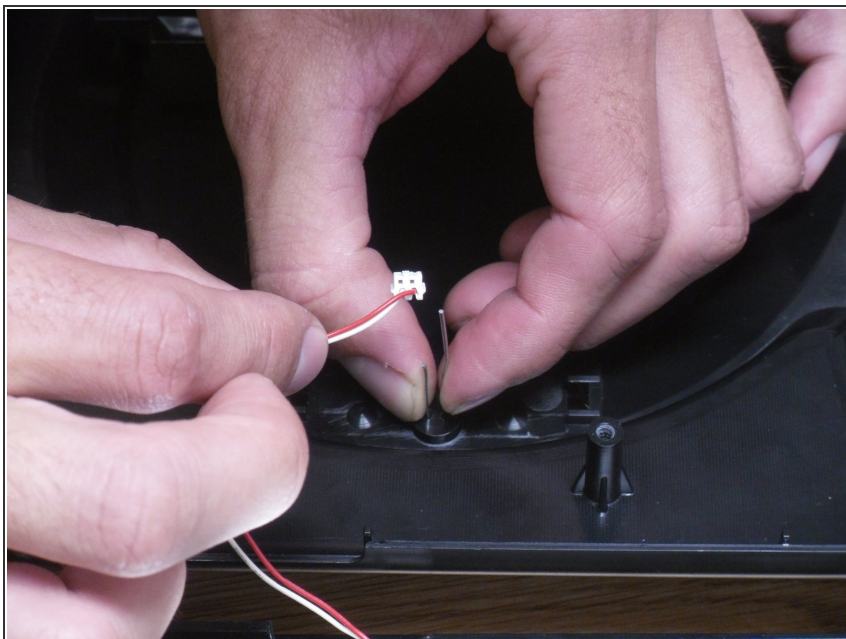
**⚠ Note: the case will be connected to the main board by LED wires.**

### Step 4



- Bend out the LED leads into vertical positions.

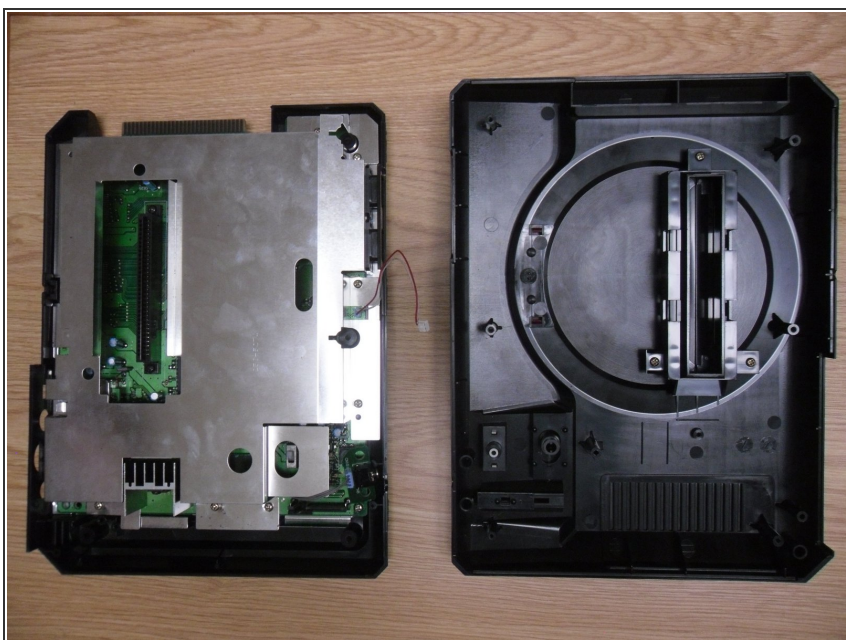
## Step 5



- Slide the LED wire apparatus off the lead pins.

**⚠ Note: observe which color wire corresponds with which length of pin.**

## Step 6



- Separate the main board from the outer case.



## Step 7 — Power LED



- Remove plastic "Power / On" cover by pushing tabs together.

## Step 8



- Pull "Power / On" cover away from the console cover.

## Step 9



- From the outside of the top cover, remove LED.

## Step 10



- Insert new LED ([Click here to buy LED.](#))

## Step 11



- Re-insert "Power / On" cover until it clicks into place.

To reassemble your device, follow these instructions in reverse order.