



iRobot Roomba 655 Pet Series Side Brush Motor Replacement

How to remove and replace the side brush motor on your Roomba

Written By: Matt Davis



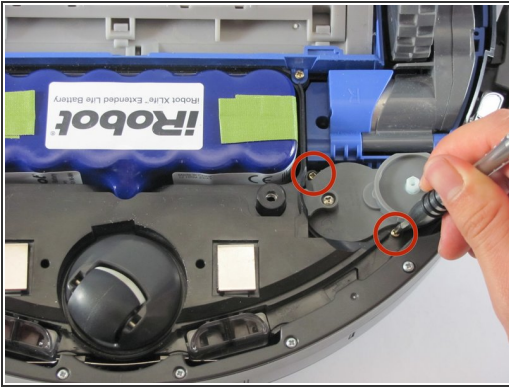
INTRODUCTION

This motor is what keeps that yellow side brush turning, picking up hairs and things dust in those hard to reach places.

TOOLS:

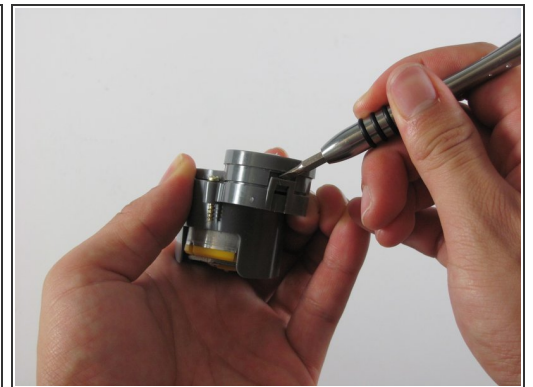
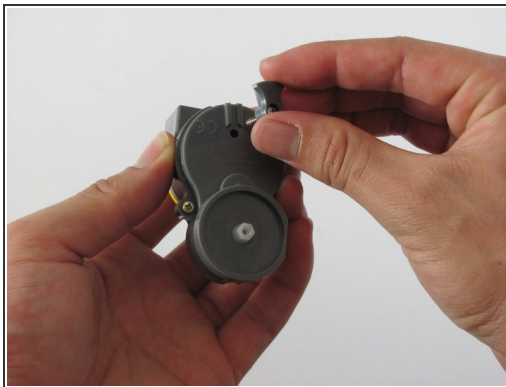
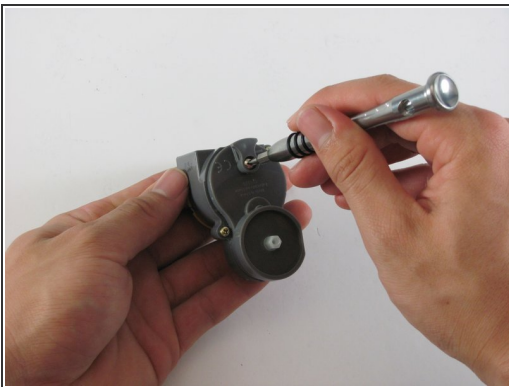
- [Phillips #1 Screwdriver](#) (1)
-

Step 1 — Side Brush Motor



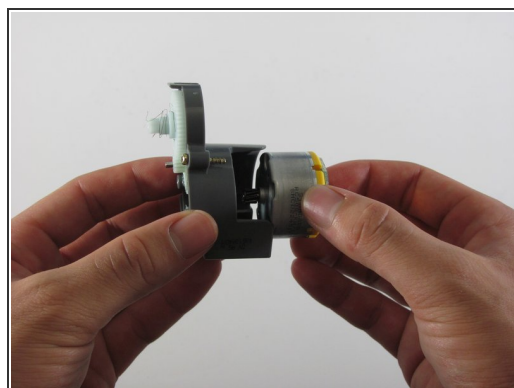
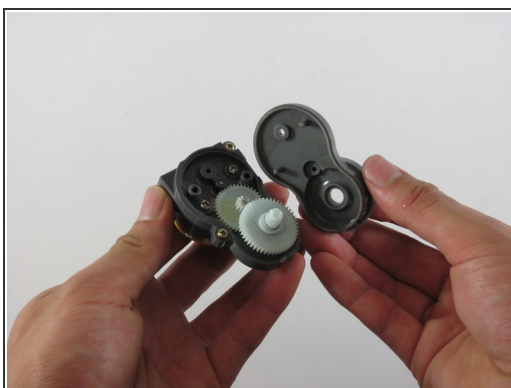
- First start by removing the two - 6mm screws with your Phillips head #1, that unlock the motor from your Roomba
- Pull the brush motor out

Step 2 — Gear Box Cover



- Next, with the same head remove the screw holding the plastic housing together
 - Carefully pry the gear box open by placing a flat head screwdriver in the slot
- i** This might be difficult and require some shifting of the screwdriver*

Step 3 — Motor Removal



- Removing these two screws will allow you to access the motor (use the same head as before)

To reassemble your device, follow these instructions in reverse order.