



# Kindle Touch Screen Replacement

Use this guide to separate the screen from the...

Written By: Adam Yerly



---

# INTRODUCTION

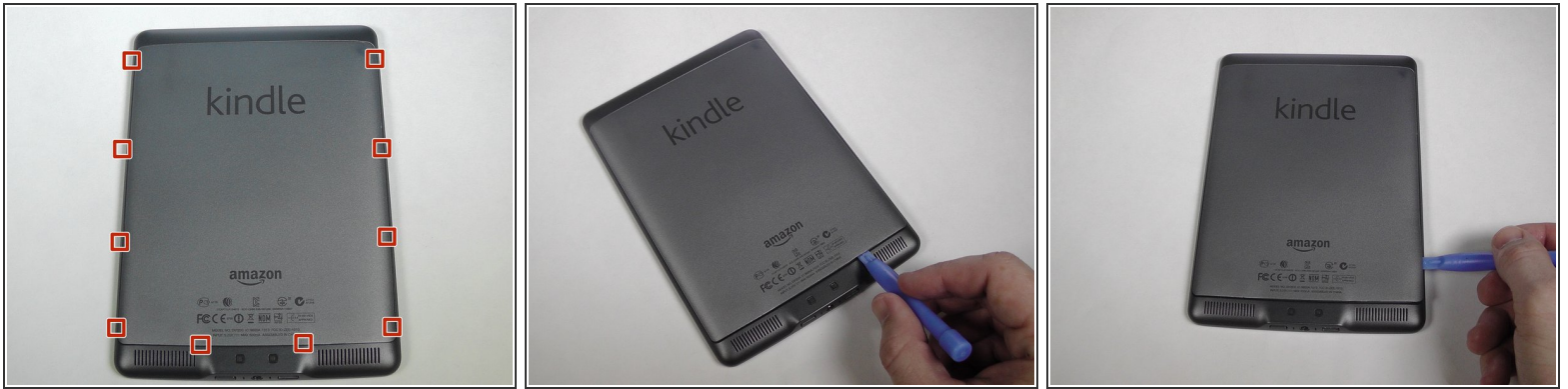
Use this guide to separate the screen from the screen support unit.



## TOOLS:

- [iOpener](#) (1)
  - [Phillips #00 Screwdriver](#) (1)
  - [iFixit Opening Tool](#) (1)
  - [Spudger](#) (1)
  - [Metal Spudger](#) (1)
-

## Step 1 — Back Cover



- Use the plastic opening tool to undo the ten plastic clips around the back panel of the Kindle.

## Step 2



- Gently lift the bottom and slide the panel off.

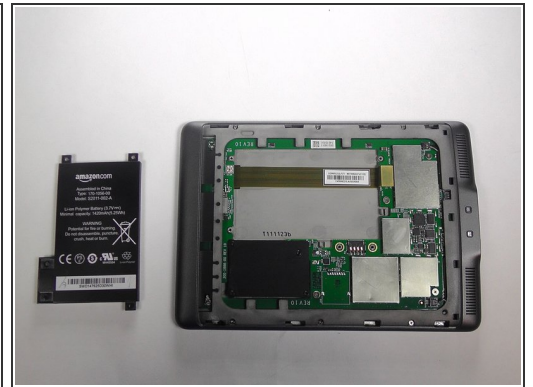
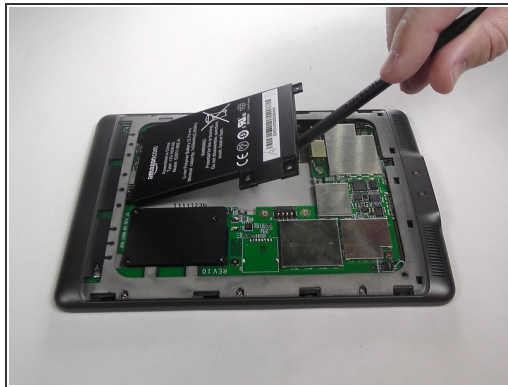


## Step 3 — Battery



- Use a Phillips #00 screwdriver to remove the five screws.

## Step 4



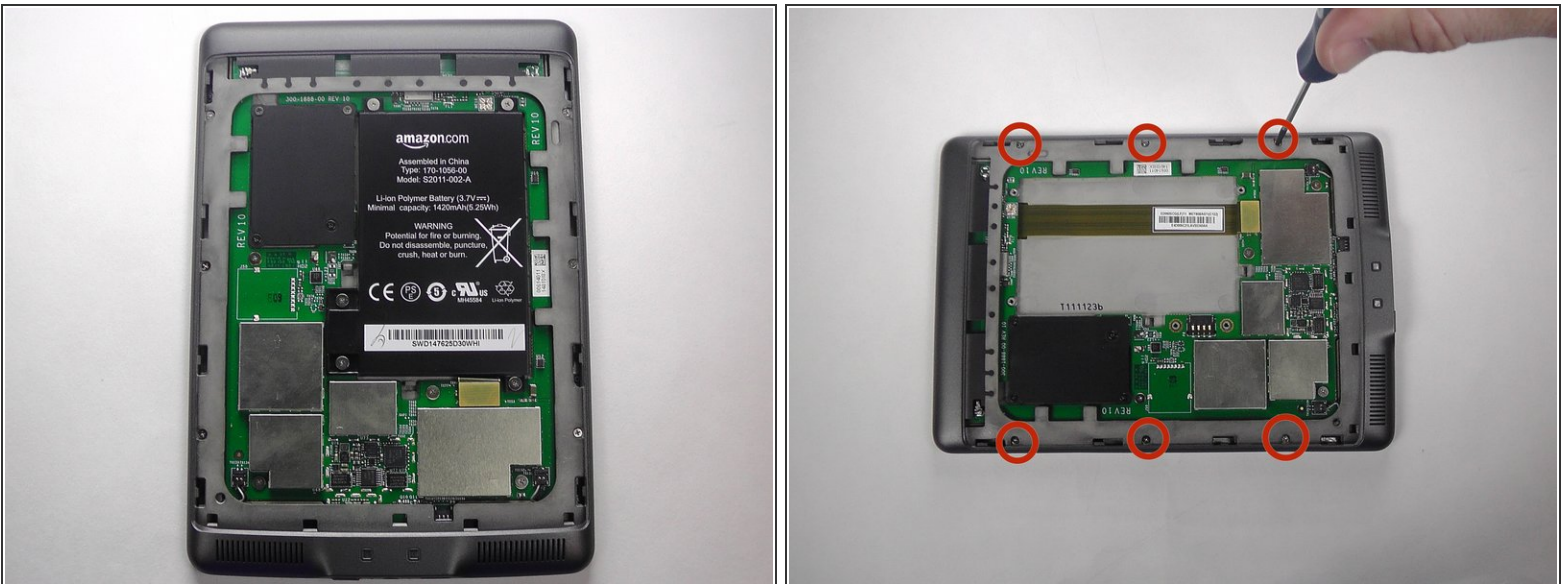
- Using the flat end of your spudger, gently pry the battery up and remove it.

## Step 5 — Remove the 3G Board



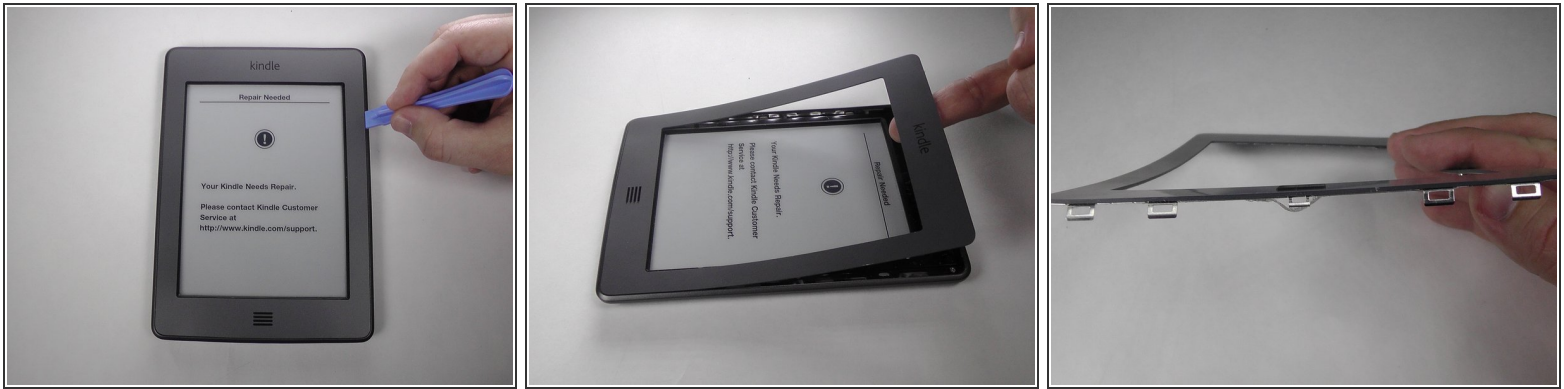
- Remove the indicated four 2 mm screws with a Phillips #00 screwdriver. (Units with the 3G assembly have Phillips #000 screws.)
- Next, gently lift the 3G assembly with a Spudger or your fingers.
- ⓘ This Kindle Touch is the WiFi only model and comes with a plastic placeholder instead of the 3G assembly.
- Disconnect the antenna lead by carefully prying it off the 3G board with a plastic tool.

## Step 6 — Bezel



- Using a Phillips #00 screwdriver, remove the six 4 mm screws to access the front plate.

## Step 7



- Use the plastic opening tool to pry the bezel from the top and sides
- i The bottom of the bezel will be glued, so be careful when sliding the clips out.
- ! The clips can be easily bent, so do not try to force them out. If you do bend some, they can be bent back.

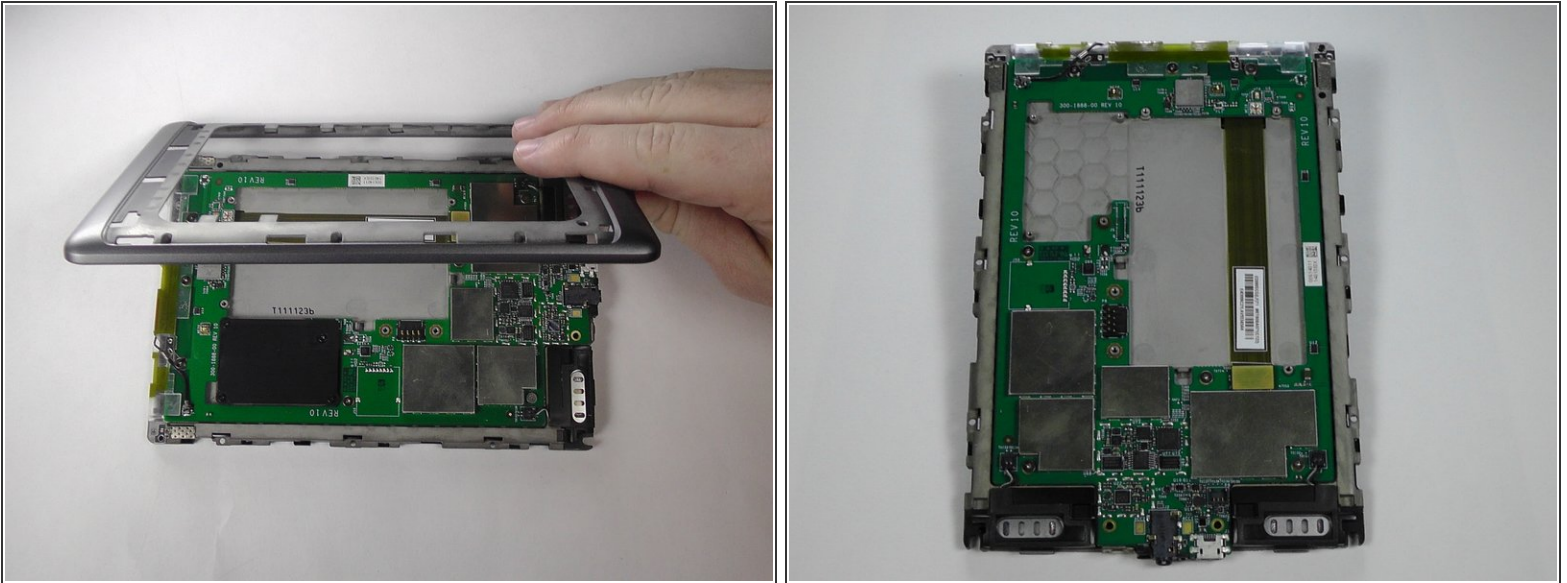
## Step 8 — Rear Casing



- Use your Phillips #00 screwdriver to remove the indicated screws.
- ★ There are three pairs of screws that are each different. The screws on the top corners are 4 mm #00 Phillips screws, the screws on the bottom corners are 2 mm #00 Phillips screws, and the black bottom center screws are 6 mm #00 Phillips screws.



## Step 9



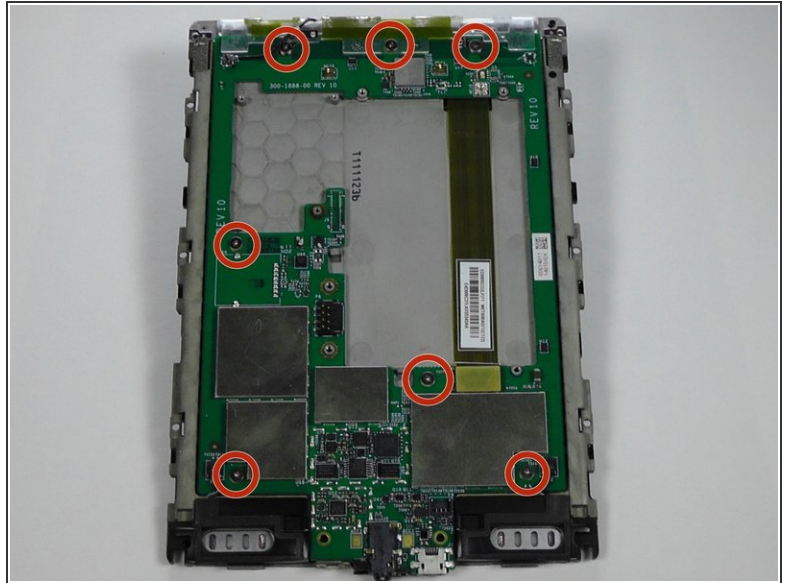
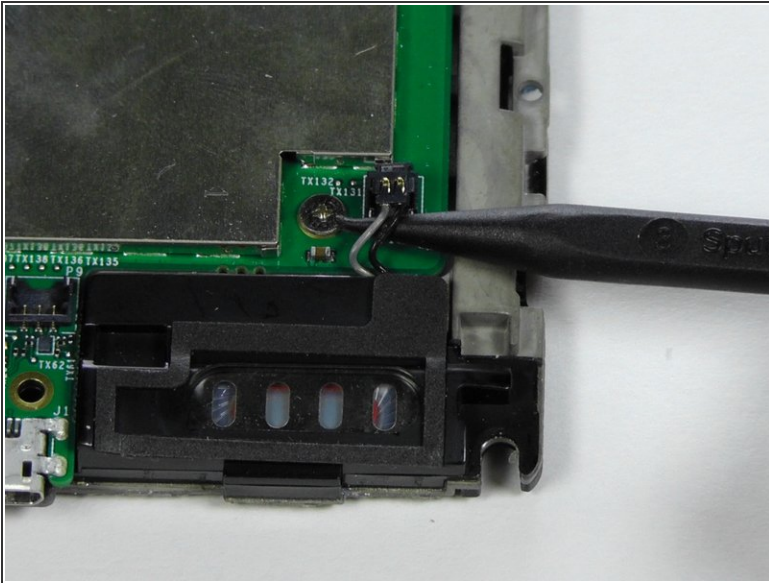
- With the screws removed, gently remove the case from the internals.

## Step 10 — Motherboard



- With the screen facing you, use your heated iOpener or other heating element to loosen the glue holding the WiFi unit to the screen. After 30 seconds, remove the heating element.
- After the glue is loosened, use a thin tool, like a Spudger or small plastic opening tool, to separate the WiFi unit from the screen.

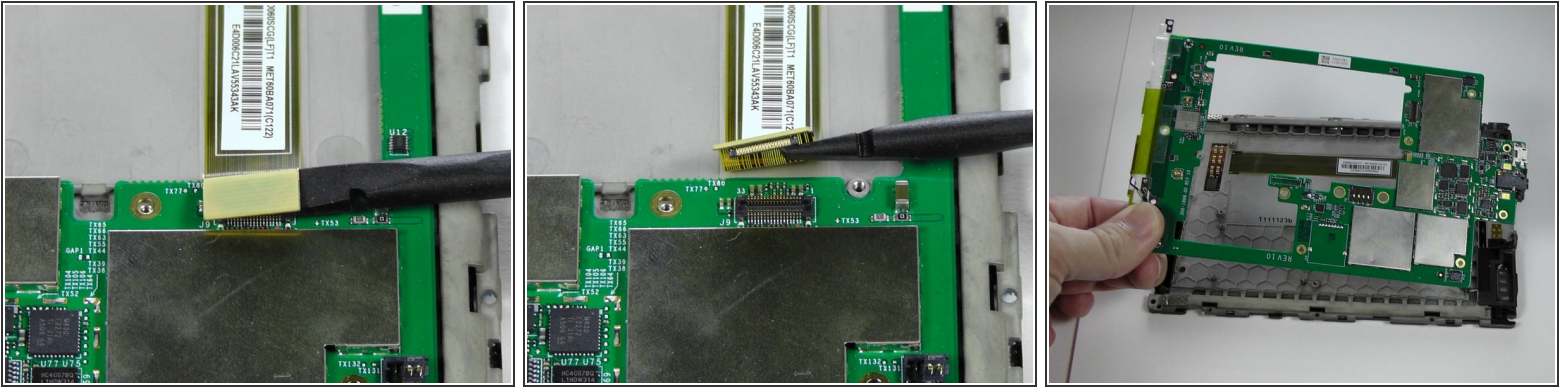
## Step 11



- With the motherboard facing you, use the pointy end of your Spudger to gently separate the two speaker's connectors.
- ⚠ This connector type requires being lifted out of place, not pulled. Accidentally pulling may damage the wires.
- 🔧 During reassembly, make sure the speaker's connectors are not pushed behind the motherboard.
- Use your #00 Phillips Screwdriver to remove the seven 2 mm screws.

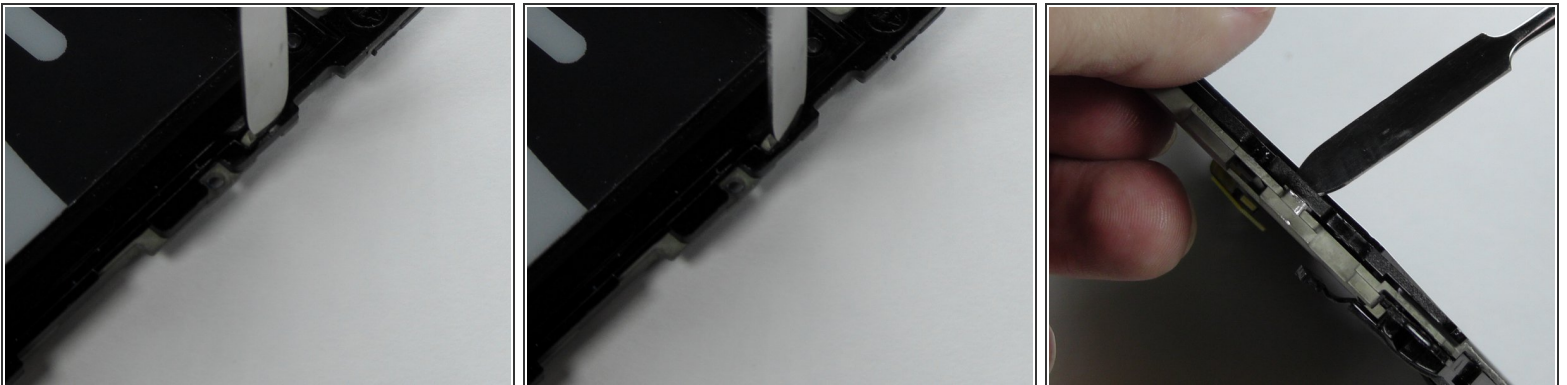


## Step 12



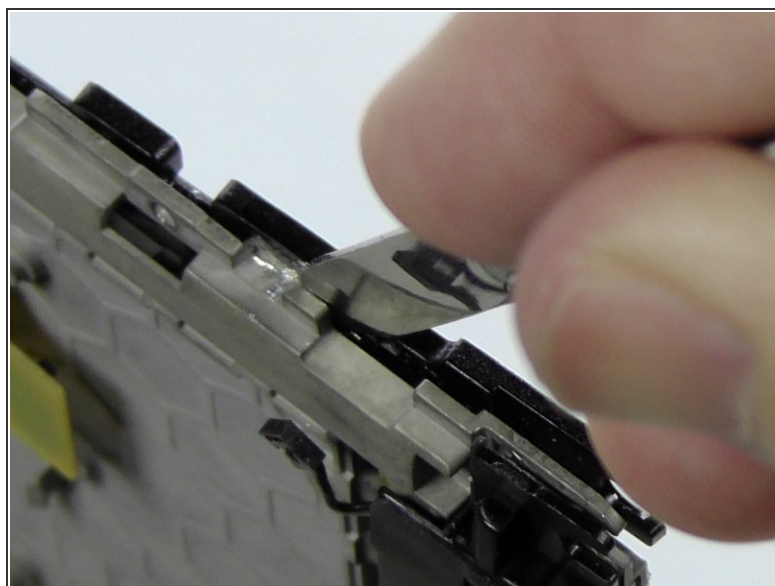
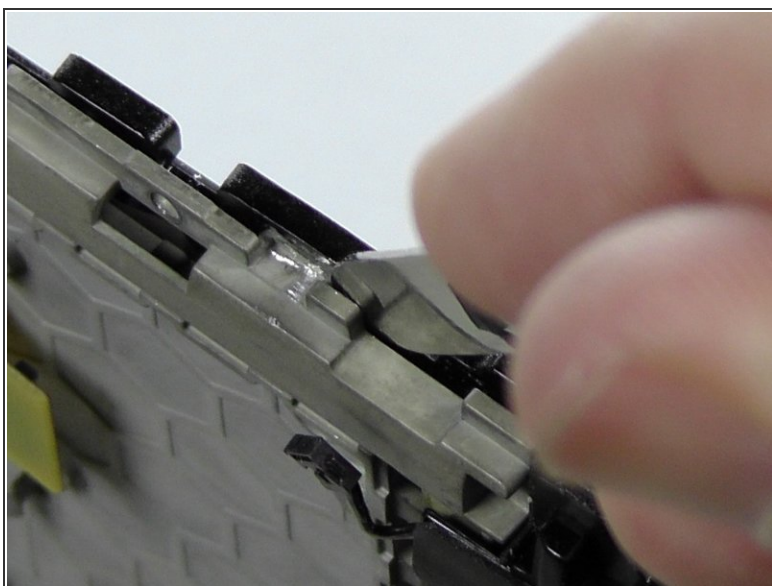
- Use a Spudger to separate the display's connector from the motherboard.
- Gently remove the motherboard from the display support.

## Step 13 — Screen



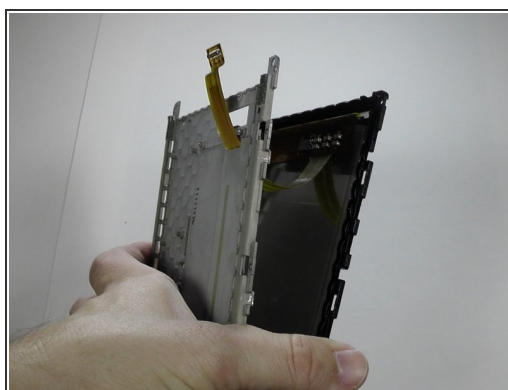
- Using your Metal Spudger, place the pointy end into the top of the clip.
- Gently rotate the Spudger and lift the plastic unit to create a gap on the side.

## Step 14



- Use the Spudger in the gap to pry the clip open.
- Repeat for the other clips.

## Step 15



- With the clips separated, gently guide the Screen's Motherboard Connector through the hole.

To reassemble your device, follow these instructions in reverse order.