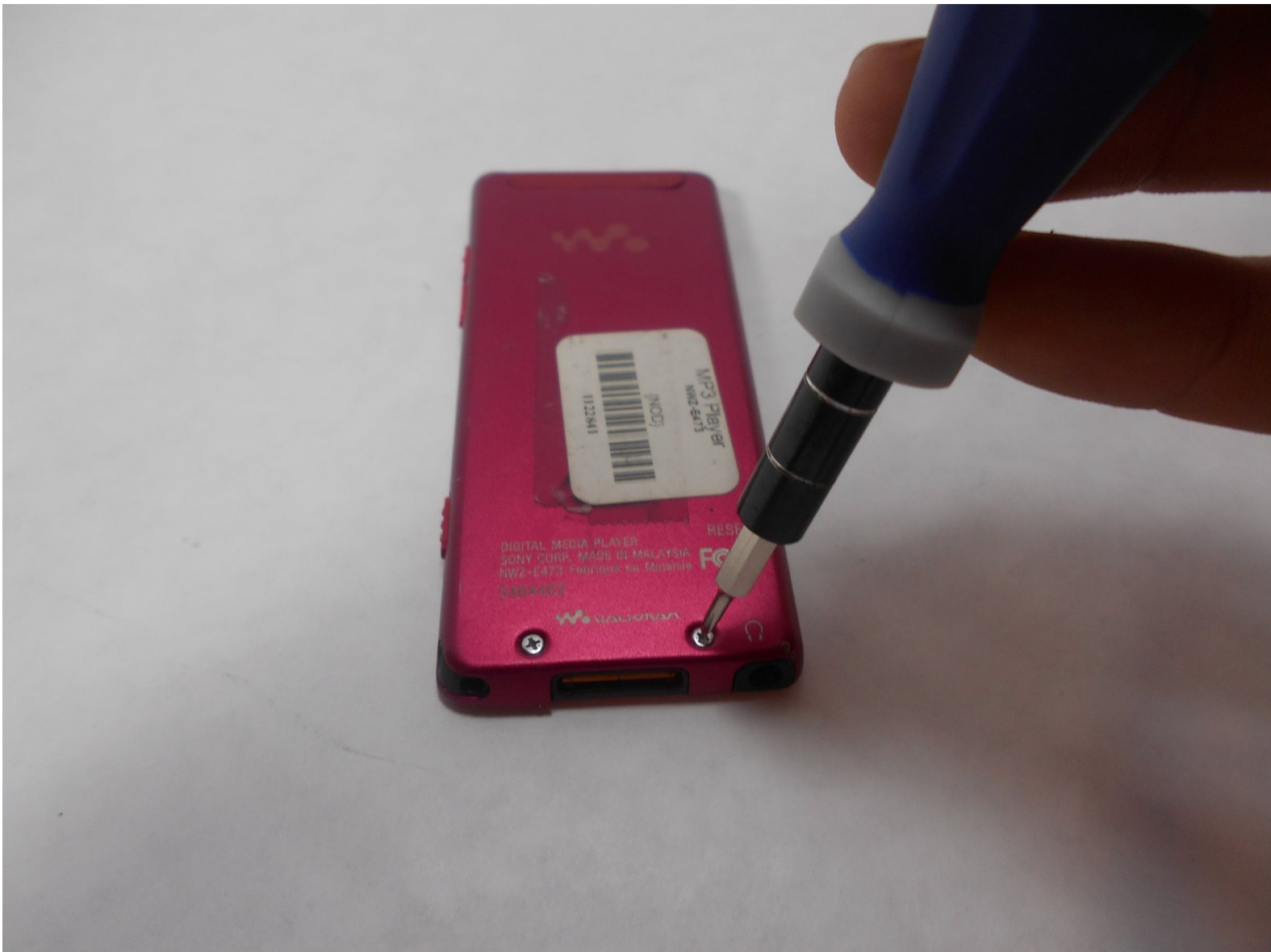




Sony NWZ-E473 Back Panel Replacement

This is how to disassemble the back panel of the Sony NWZ-E473.

Written By: lamallery



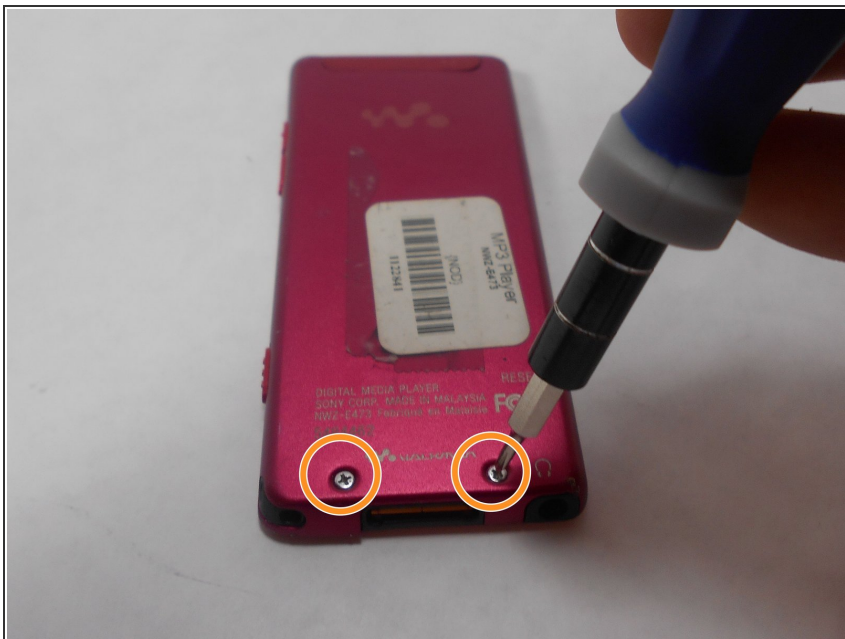
INTRODUCTION

To complete this Sony NWZ-E473 guide, you will need a screw driver and a prying device. Caution is advised when prying the back panel because permanent damage may occur if done incorrectly.

TOOLS:

- [Phillips #00 Screwdriver](#) (1)
 - [iFixit Opening Tools](#) (1)
-

Step 1 — Back Panel



- Use a Phillips #00 screwdriver to unscrew the two 5 mm screws located on the bottom of the back of the device.

Step 2



- Use a plastic opening tool to loosen the bottom portion of device.

Step 3



- Use a plastic opening tool to loosen the top panel of the device.

Step 4



- Use a Phillips #00 screwdriver to remove the two 3 mm screws located on the portion under the top panel of the device.

Step 5



- Remove the back plate from the device.

To reassemble your device, follow these instructions in reverse order.