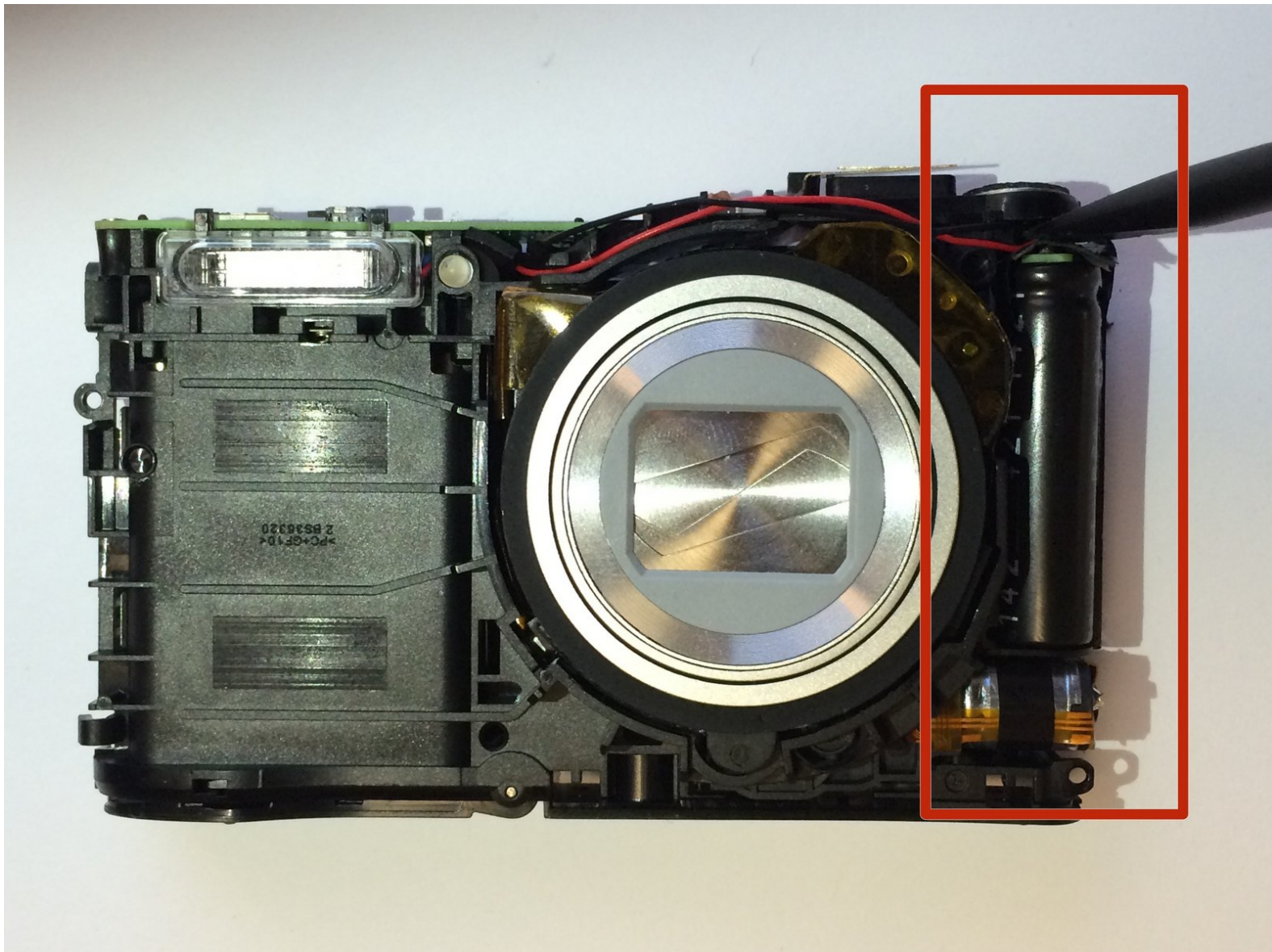




# Samsung WB35F Flash Capacitor Replacement

This guide will help you to replace the flash capacitor in your Samsung WB35F.

Written By: Sarmad Khan



# INTRODUCTION

This guide will give user step by step instructions on how to replace the flash capacitor of the camera.



## TOOLS:

- [Phillips #00 Screwdriver](#) (1)
  - [Phillips #000 Screwdriver](#) (1)
  - [iFixit Opening Tools](#) (1)
  - [Tweezers](#) (1)
-

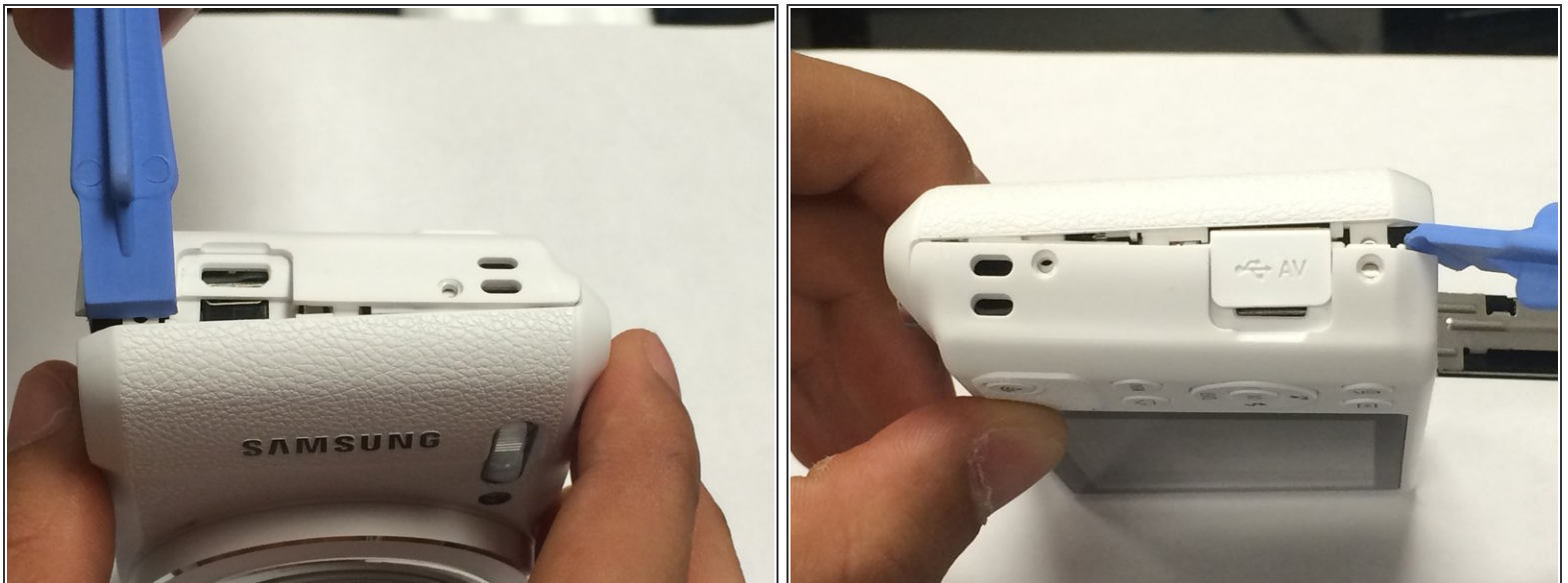
## Step 1 — Rear Case



- The first thing to do will be unscrew all the screws using Phillips #000 Screwdriver.

⚠ Keep all the screws in order. Black screws goes under the bottom of camera, and the silver screws goes on the sides and inside of the camera.

## Step 2



- Using the spudger, and plastic opening tool open the casing of camera.

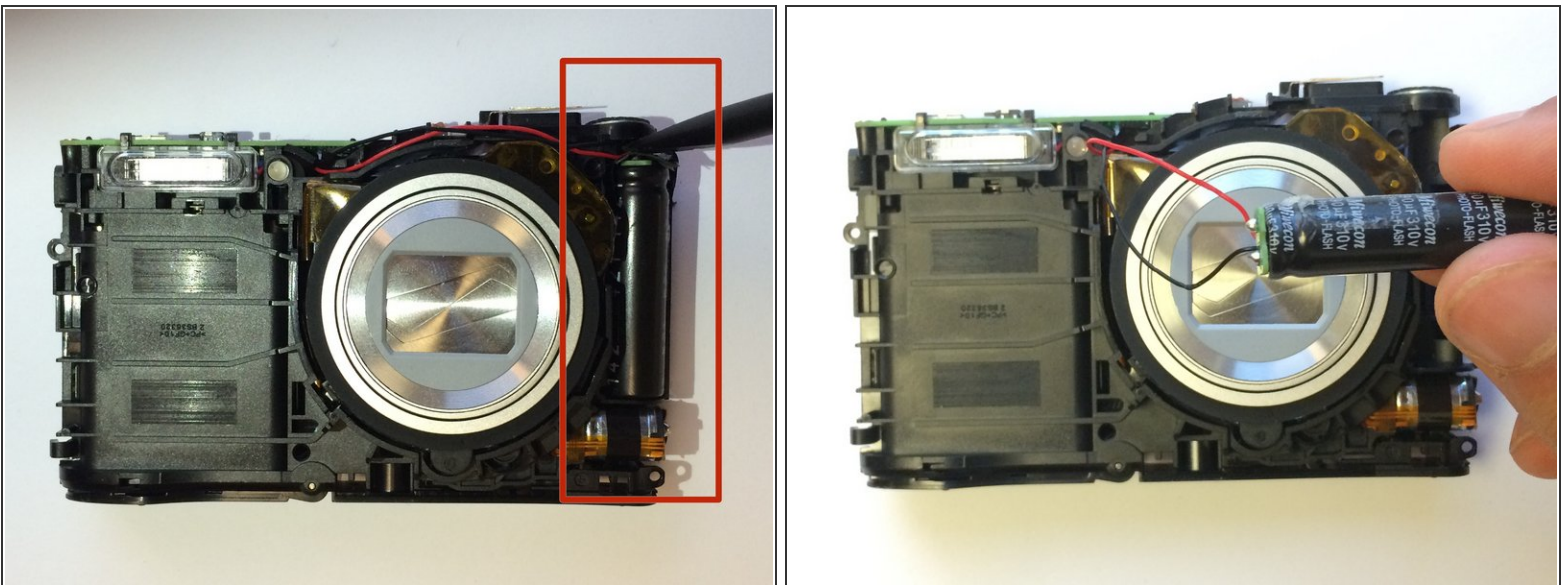


### Step 3



- Once you open the camera case, you will be able to work on any part of the camera.

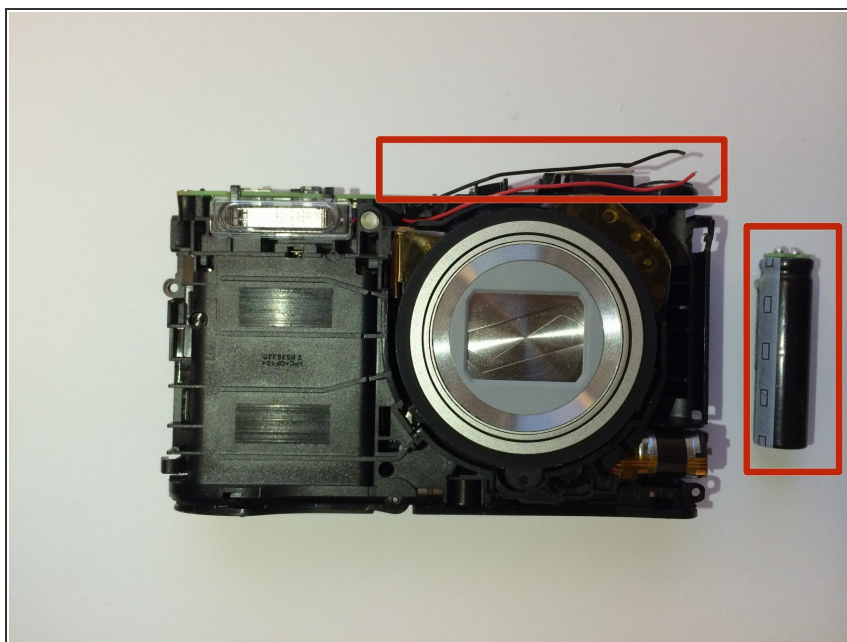
### Step 4 — Flash Capacitor



**⚠ Caution:** Touching the capacitor wires may cause serious injury. Use a [capacitor discharge probe](#) to safely rid the capacitors of dangerous charges.

- Carefully take out the capacitor using the spudger.

## Step 5



- Disconnect the wire from battery and replace the old battery with new battery.
- Connect the wires to new battery and put the battery back in terminal.
- ★ Connect the positive wire to the positive terminal of the battery and negative wire to the the negative terminal of the battery.

To reassemble your device, follow these instructions in reverse order.