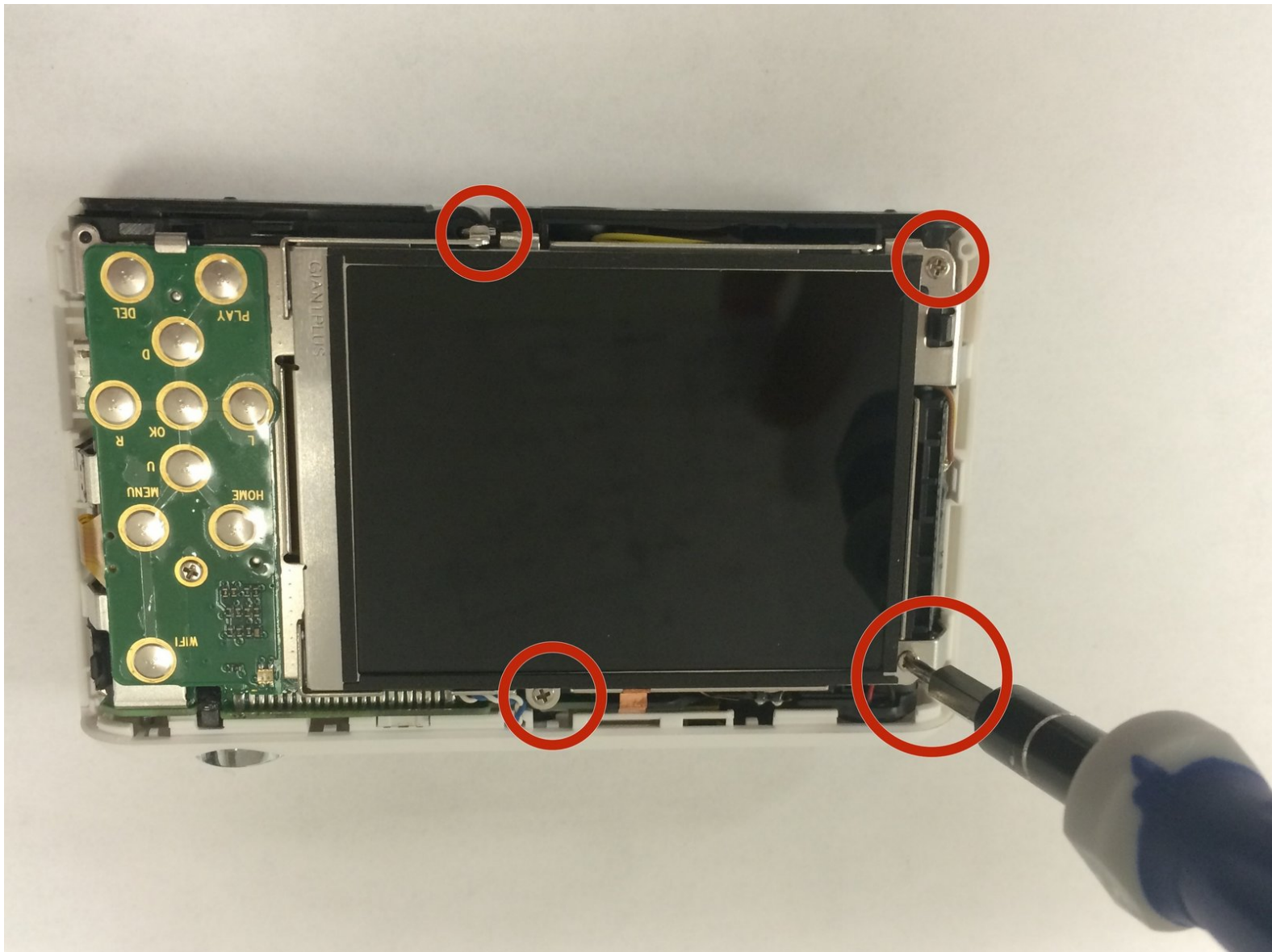




Samsung WB35F Screen Replacement

This guide will help you to replace the front camera screen of the Samsung WB35F.

Written By: Sarmad Khan



INTRODUCTION

This guide will give user step by step instructions on how to replace damaged or scratched screen of the camera.



TOOLS:

- [Phillips #00 Screwdriver](#) (1)
- [Phillips #000 Screwdriver](#) (1)
- [iFixit Opening Tools](#) (1)
- [Tweezers](#) (1)



PARTS:

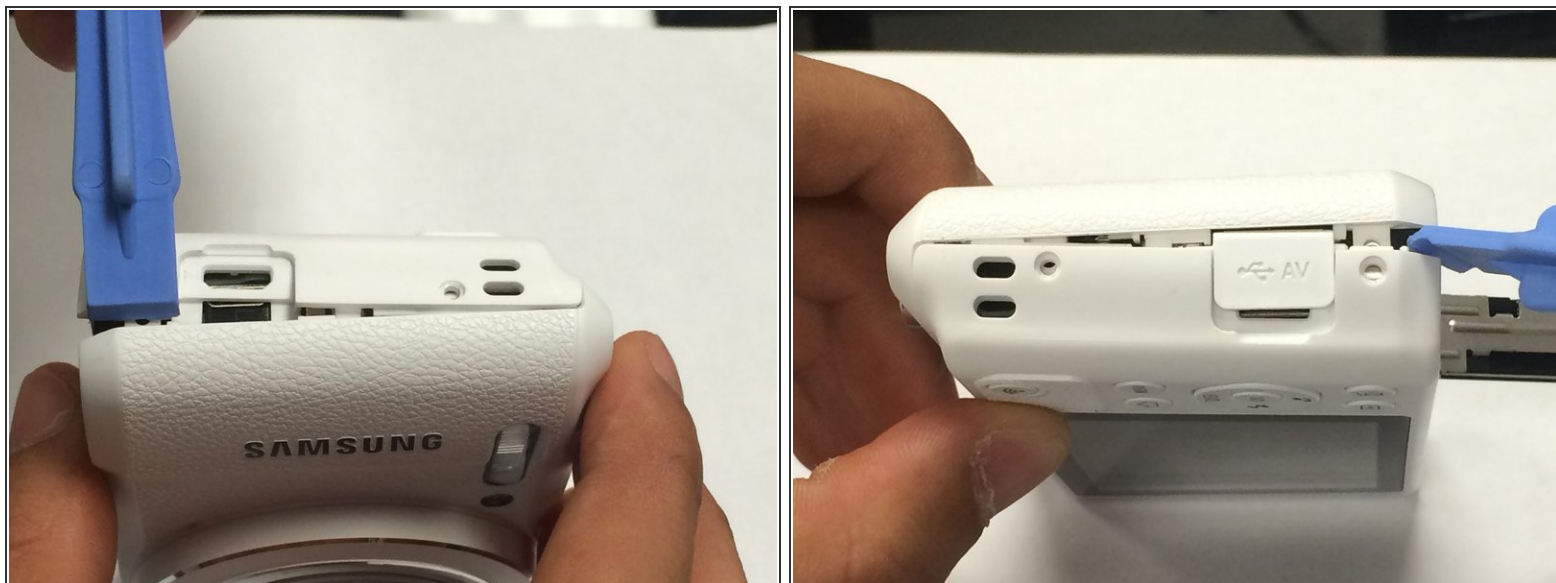
- [samsung WB35F](#) (1)

Step 1 — Rear Case



- The first thing to do will be unscrew all the screws using Phillips #000 Screwdriver.
- ⚠ Keep all the screws in order. Black screws goes under the bottom of camera, and the silver screws goes on the sides and inside of the camera.

Step 2



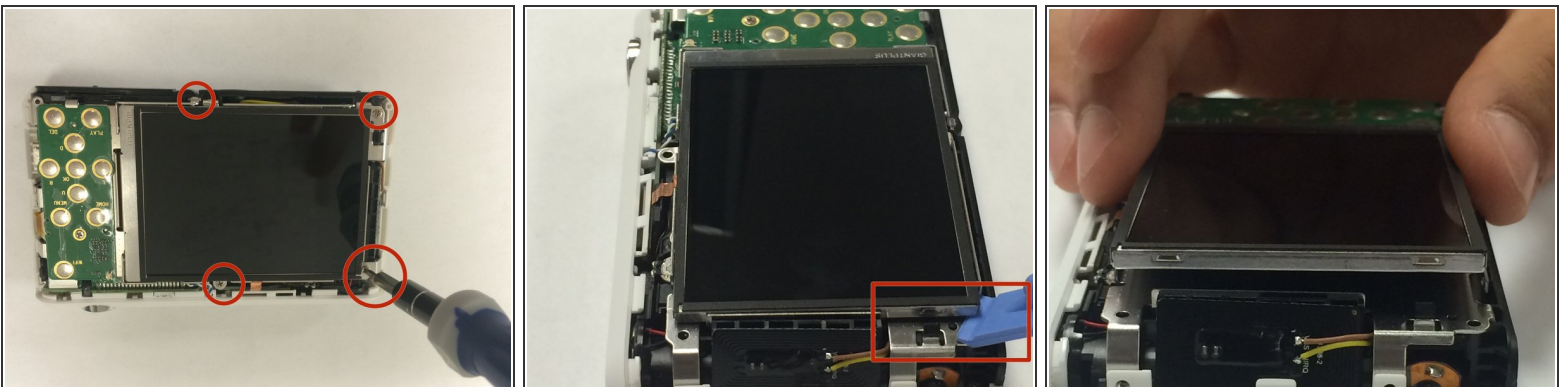
- Using the spudger, and plastic opening tool open the casing of camera.

Step 3



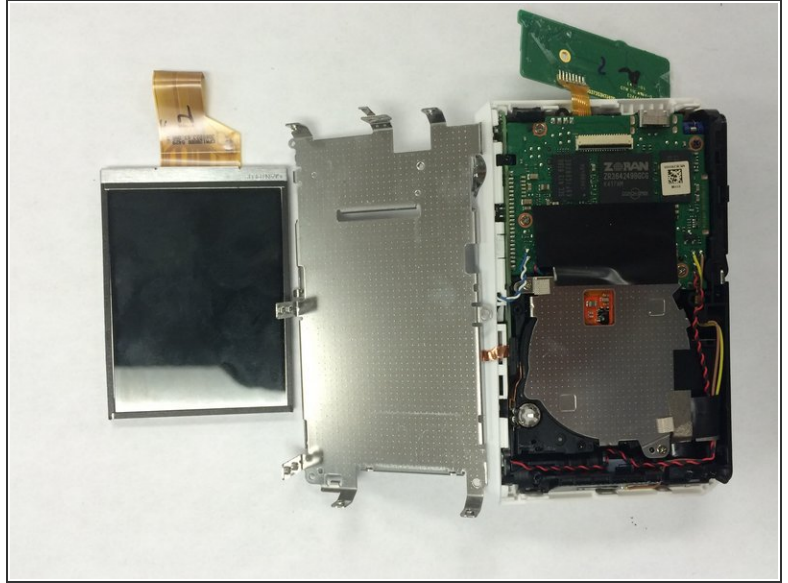
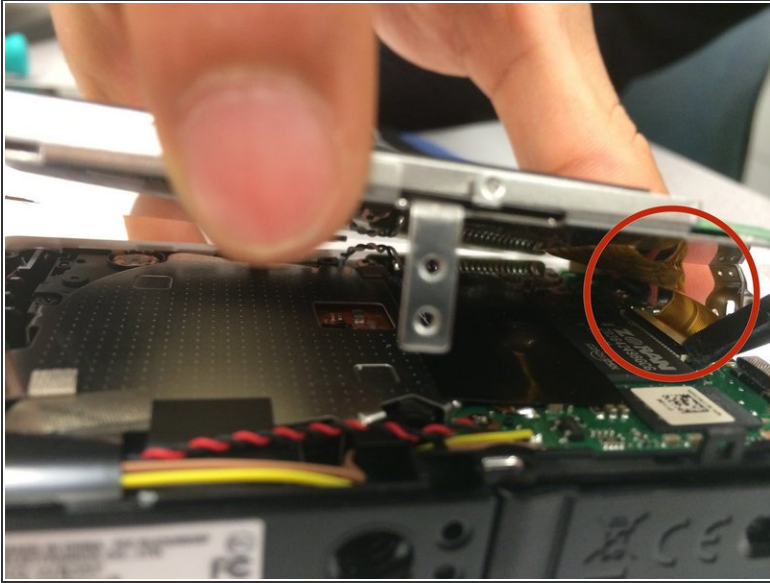
- Once you open the camera case, you will be able to work on any part of the camera.

Step 4 — Screen



- Open all the screws around the screen using Phillips #000 Screwdriver.

Step 5



- First disconnect the ribbon by using spudger.
 - Carefully take out the old screen and replace it with a new screen.
- ⚠ Be careful when you pull out the screen, because there is a ribbon attached to the panel.

To reassemble your device, follow these instructions in reverse order.