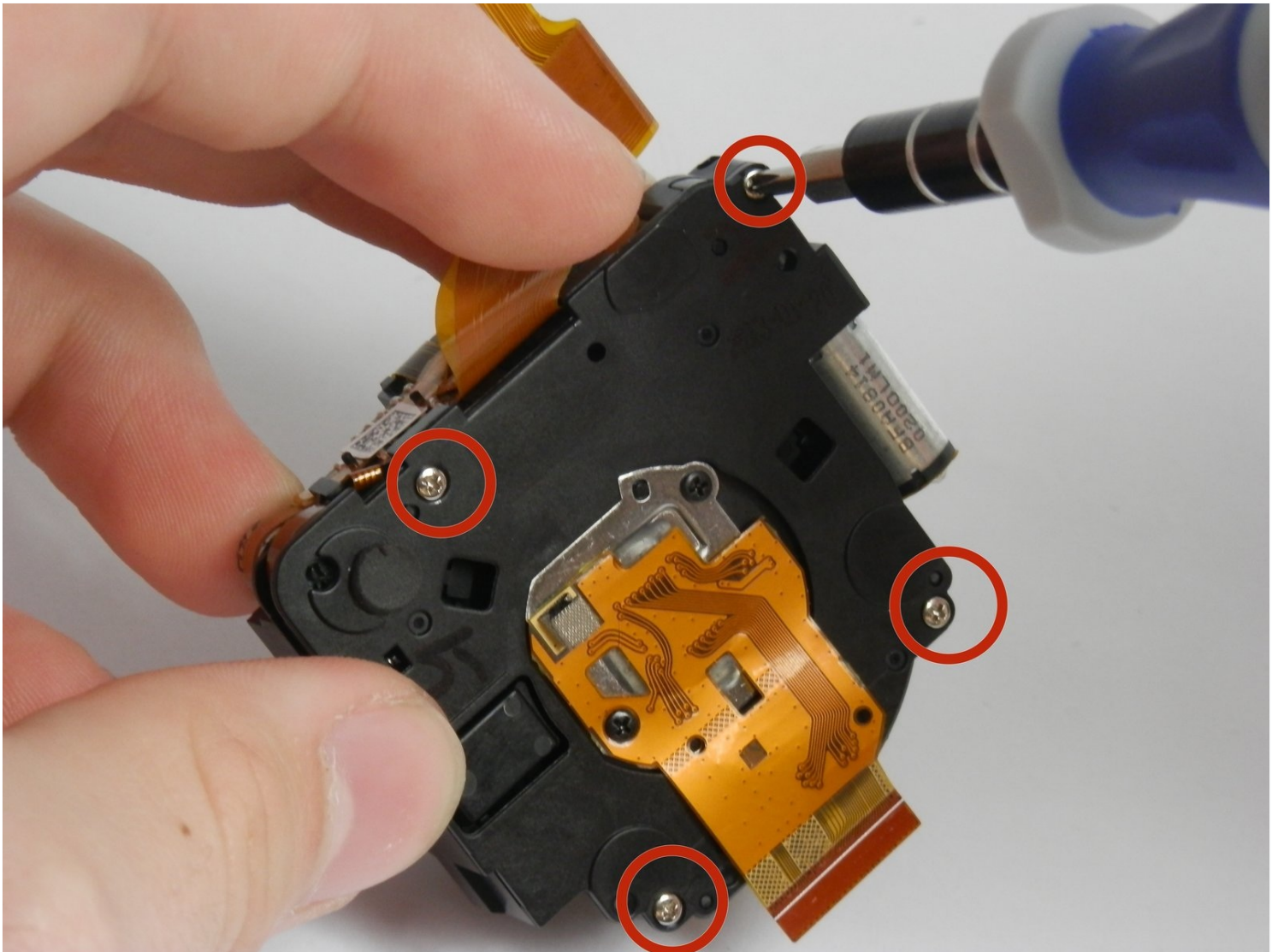




Fujifilm FinePix T500 Lens Gears Replacement

If your Fujifilm Finepix T500 camera lens has...

Written By: Brian Lasher



INTRODUCTION

If your Fujifilm Finepix T500 camera lens has stopped adjusting in or out of the camera's body, use this guide to replace the lens gears. The lens of the camera is what focuses light to produce images. If the alignment of the gears is broken, then the lens cannot focus correctly to produce any images other than white light.

Before beginning, power off your camera completely and remove the batteries. This guide requires soldering so if you're not experienced or have this skill, refer to this [guide](#) and/or ask someone with experience for assistance. The soldering iron gets very hot and will burn.

TOOLS:

[Phillips #00 Screwdriver](#) (1)

[Spudger](#) (1)

[Tweezers](#) (1)

[Soldering Iron 60w Hakko 503F](#) (1)

Step 1 — LCD Screen



- Unscrew the six 3.5mm Philips head from the outer casing.

Step 2



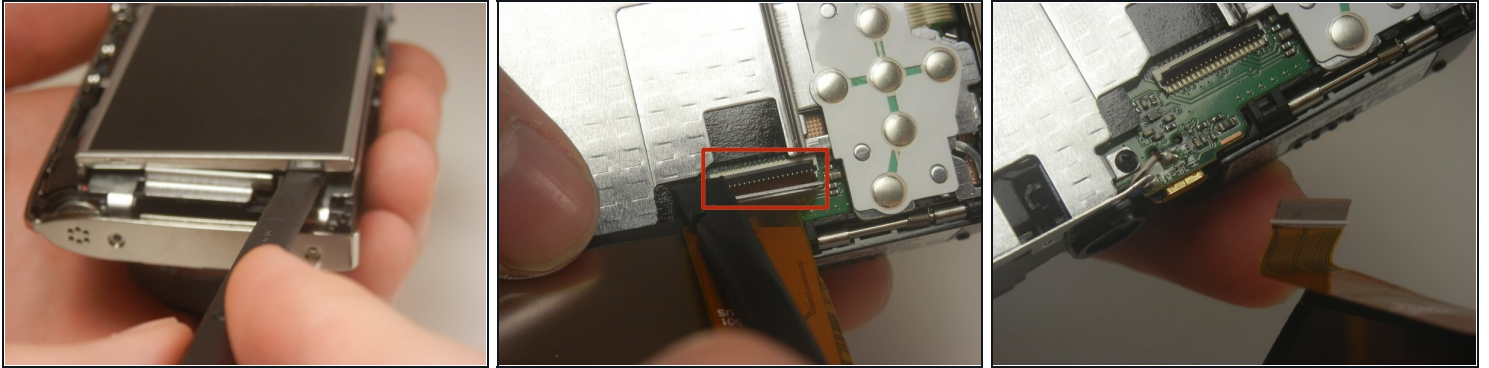
- Open the battery chamber and remove the battery.
- Pry the front half of the casing from the camera.
- Be careful that the sensor cover—the small piece of translucent plastic—doesn't fall out of place. Return it to its original location if it does.

Step 3



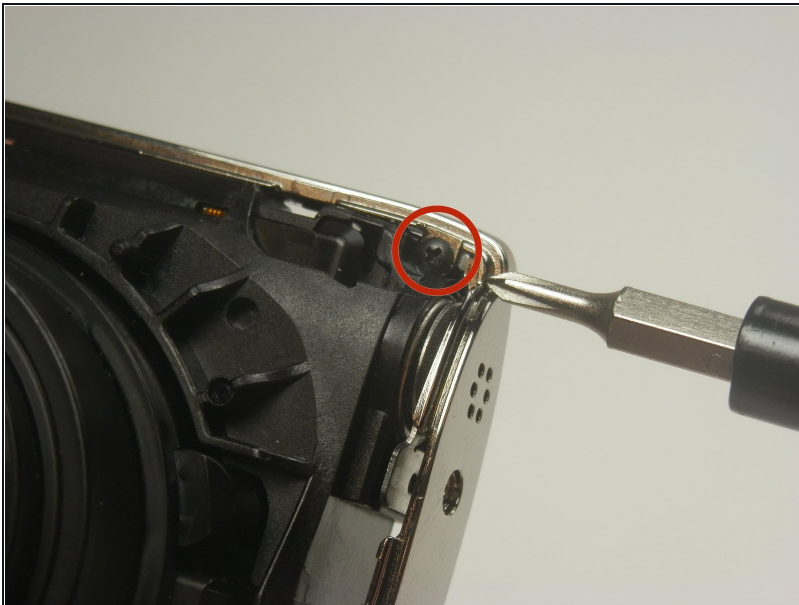
- Pry the back half of the casing from the camera.
- ⓘ Be careful when maneuvering the camera without the casing on as the LCD screen is not fastened to anything.

Step 4



- Lift the LCD screen out of the camera.
- There is a tab that keeps in place the ribbon that attaches the screen and motherboard. Lift this up using the spudger and disconnect the screen from the motherboard.

Step 5 — Lens



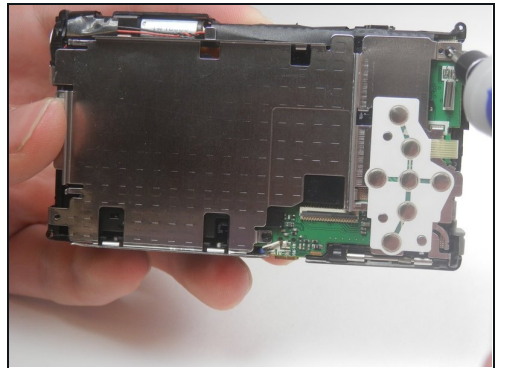
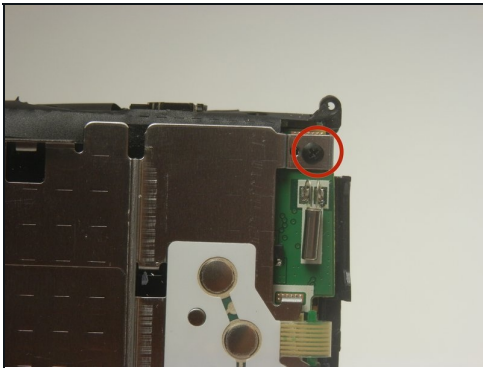
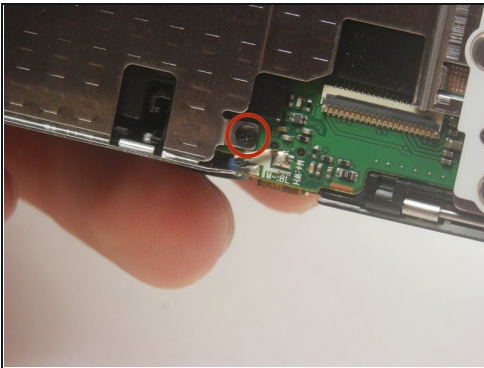
- Unscrew the 3.5 mm Phillips head screw from the corner of the camera.

Step 6



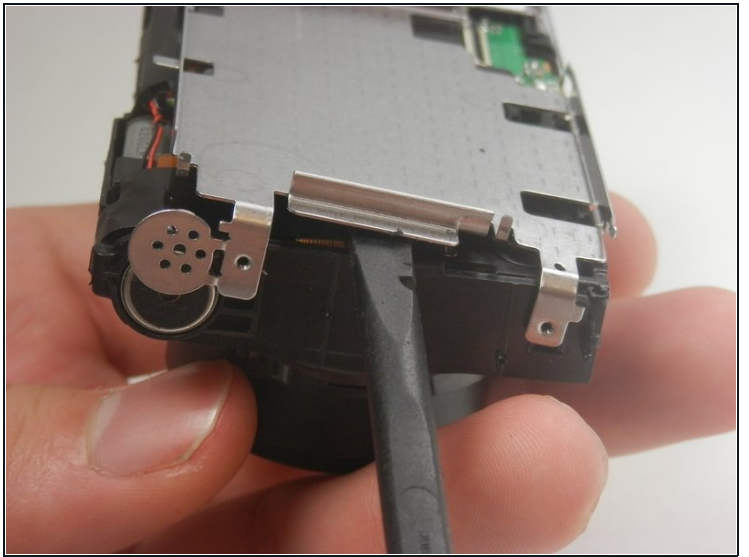
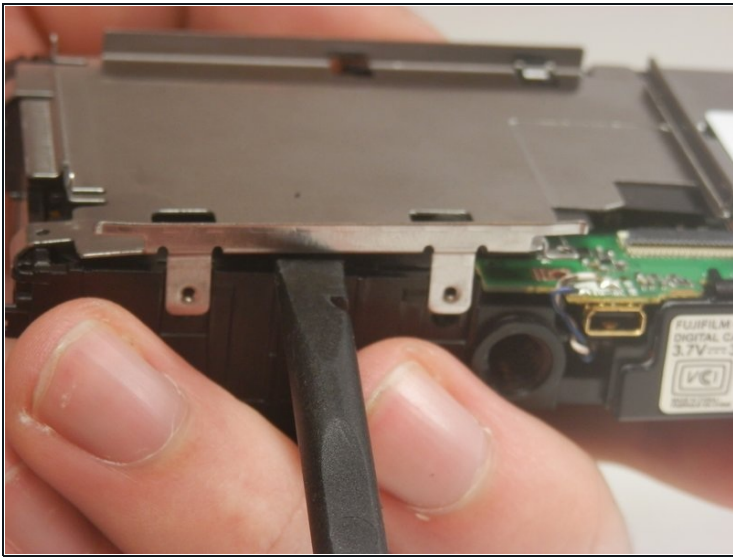
- Pry the center casing off the camera. This is best done by separating the top and side sections individually.

Step 7



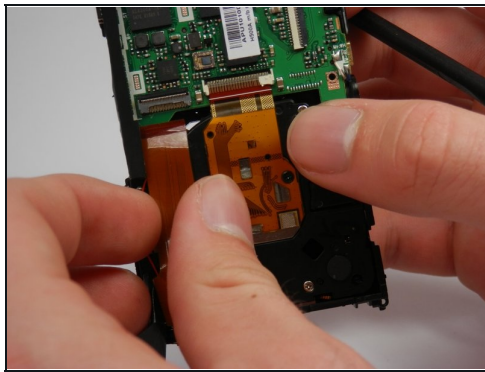
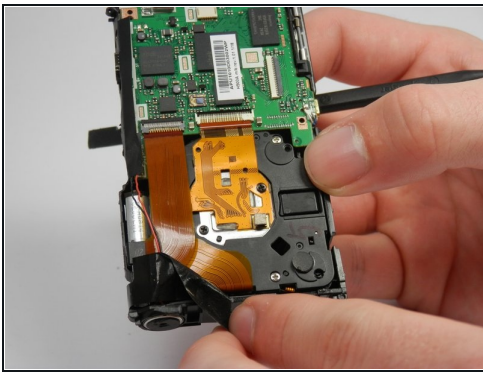
- Unscrew the two 3.5 mm Phillips head screws in the metal plate.

Step 8



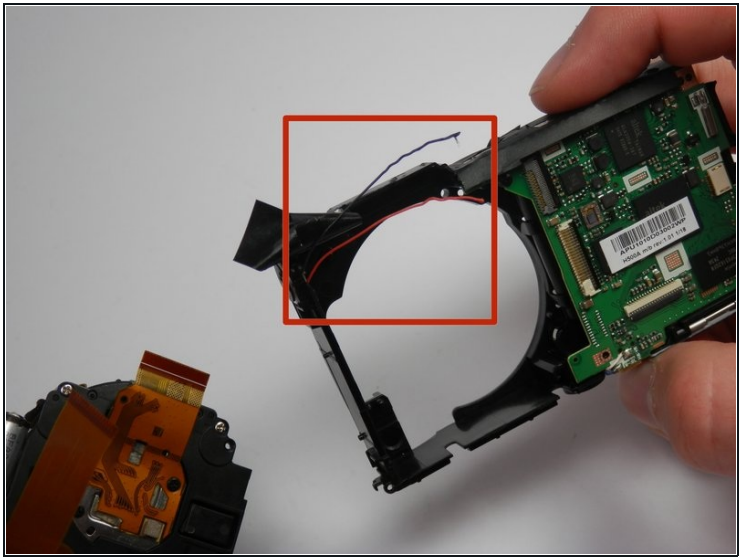
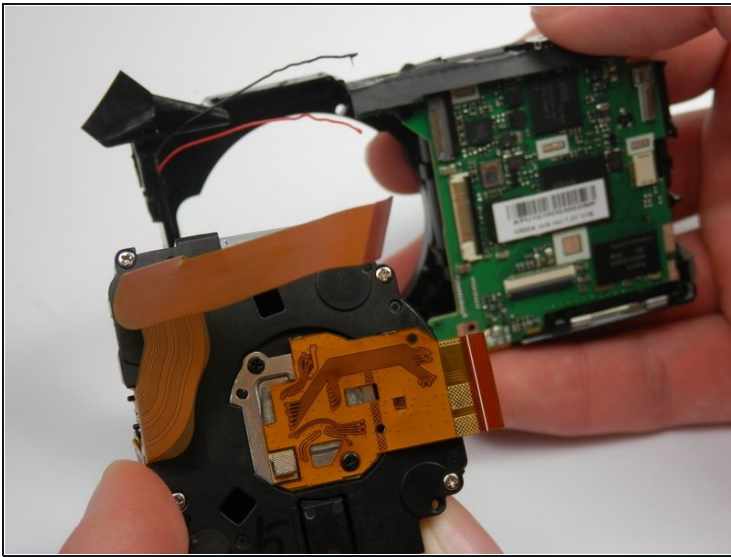
- Pry the metal plate out using the spudger.

Step 9



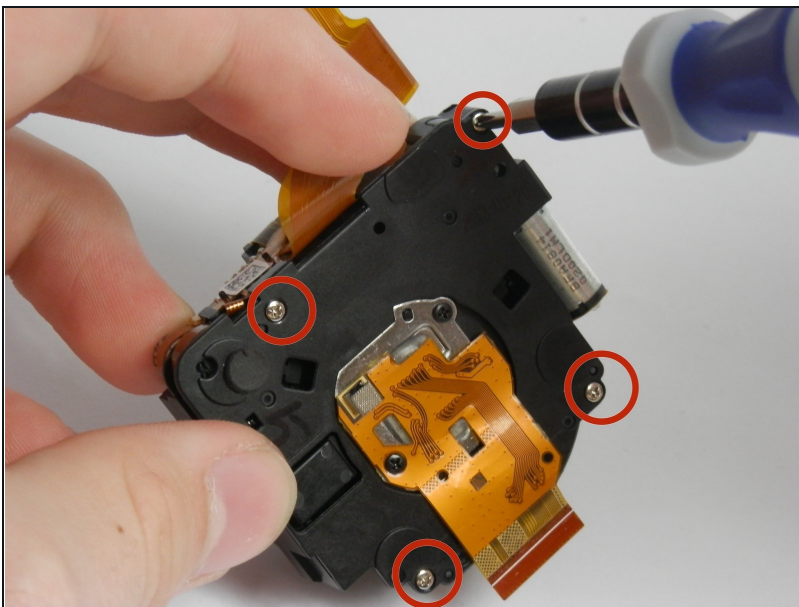
- Peel back the strip of black tape to reveal a red and black wire.
- Detach the orange ribbon by gently pulling on it.
- Detach the golden ribbon by gently lifting it with the spudger.

Step 10



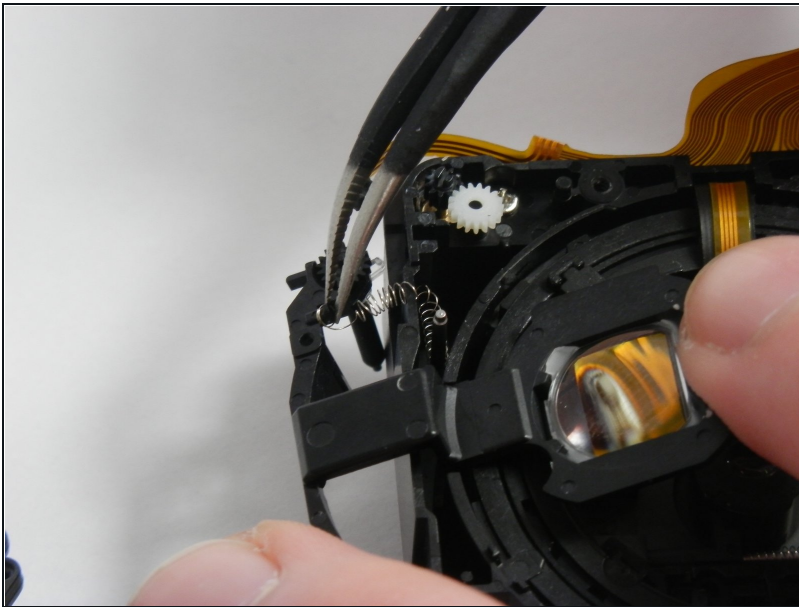
- The lens should now be free to simply be pushed out of its socket.
- The black and red wires that were exposed previously may be in the way of removing the lens and may break. If they do, you will need to solder these wires back into place upon reassembly.

Step 11 — Lens Gears



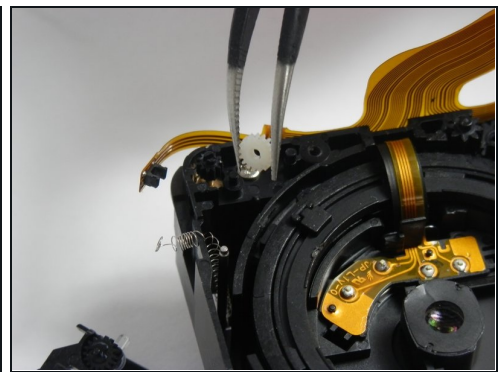
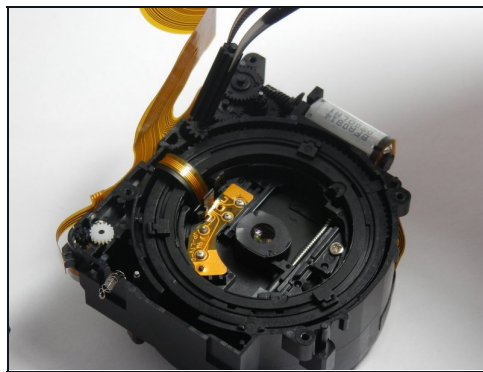
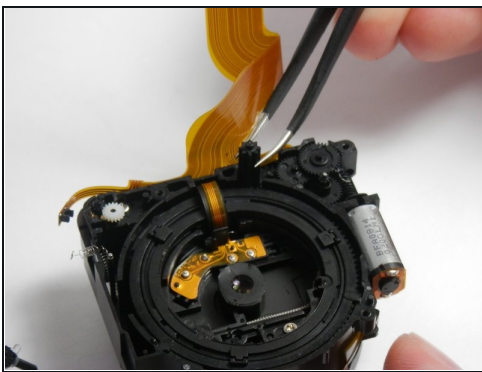
- Use a Phillips #00 screwdriver to remove four 3.5 mm screws from the corners of the internal plate.

Step 12



- Slide the rectangular plastic frame to the side. You'll find a spring attaches the frame to the rest of the lens casing.
- Disconnect the plastic frame from the spring.

Step 13



- ⓘ The white and the black gears of the lens unit are responsible for the lens movement.
- Using tweezers, adjust and replace these gears as needed. The white gear should be integrated with the rest of the unit. The black gear should occupy the entirety of its cavity.

To reassemble your device, follow these instructions in reverse order.