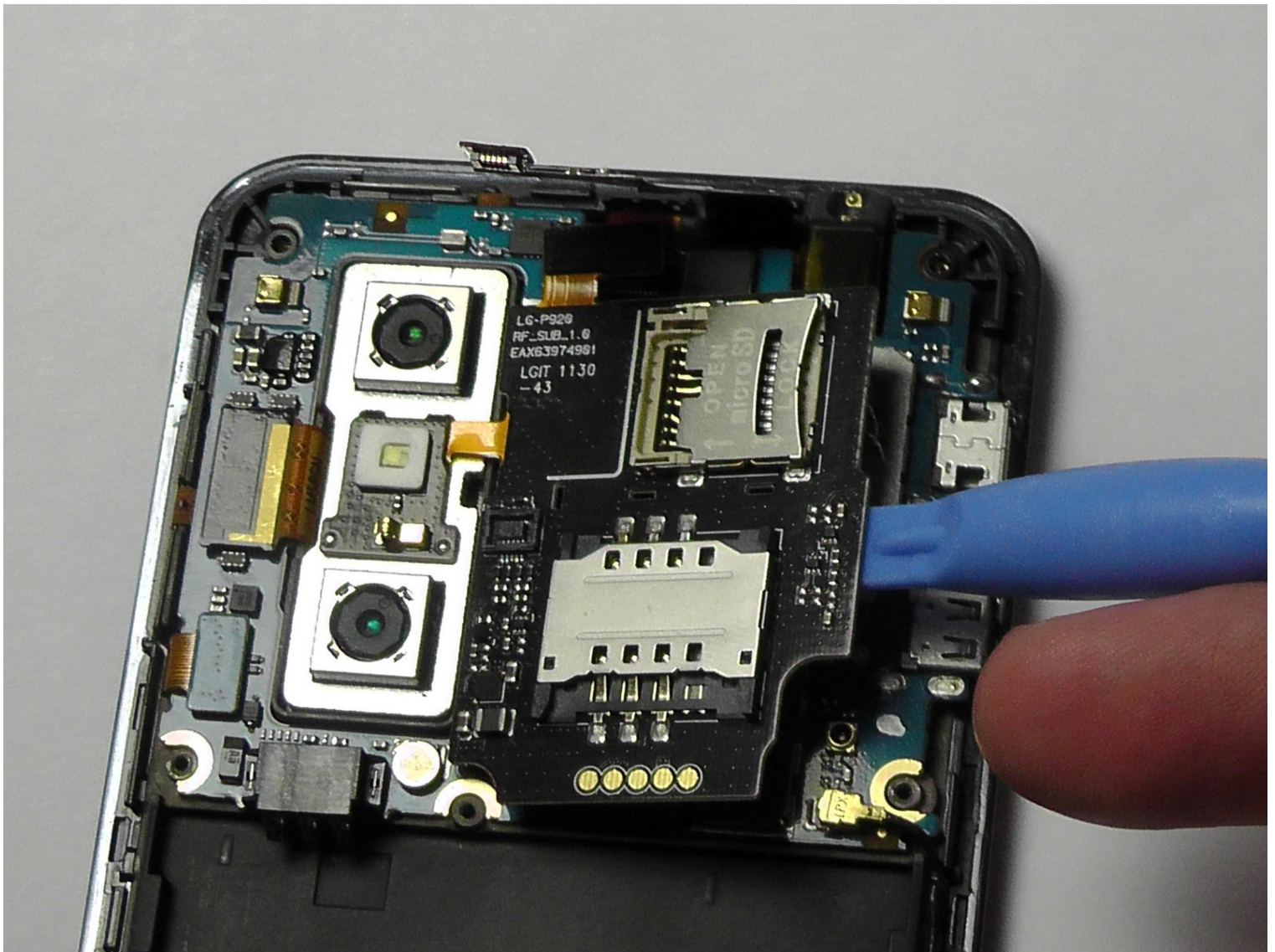




# LG Thrill 4G SIM/Micro SD Card Replacement

Before we begin disassembling your LG device,...

Written By: Khbero Baker



# INTRODUCTION

Before we begin disassembling your LG device, make sure your phone is turned off, make sure you have .the back cover and the battery detached to properly access the sim card board.

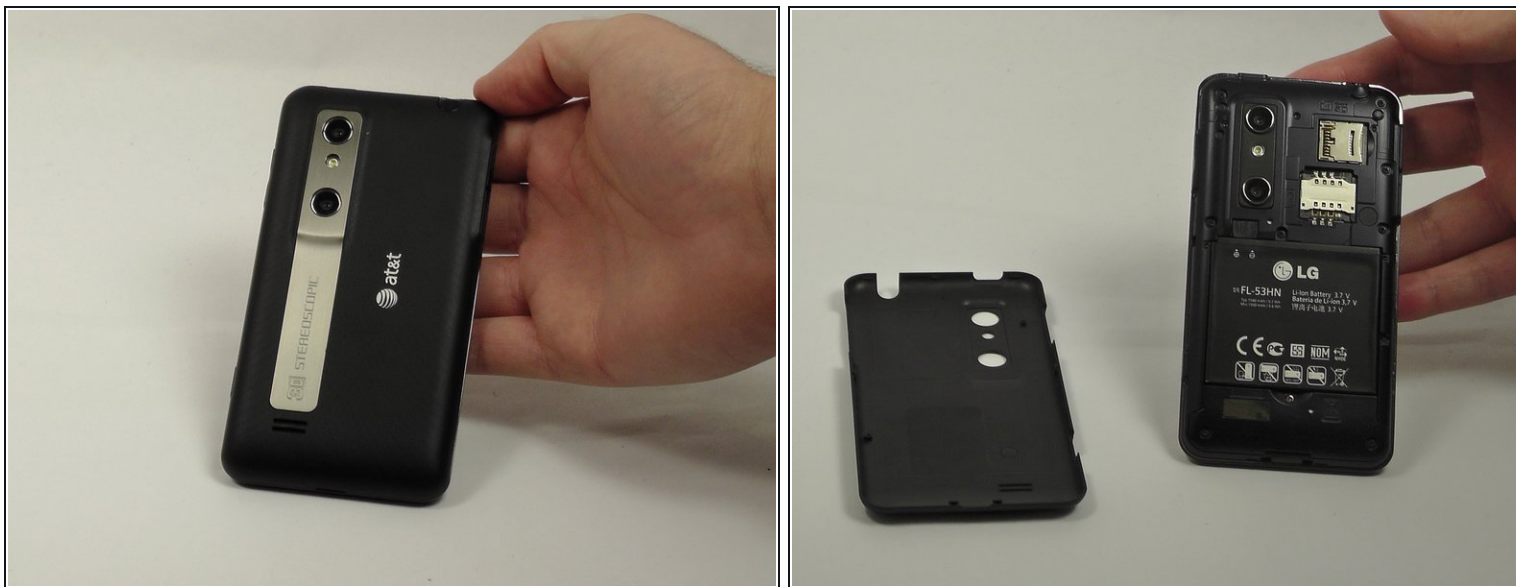
## TOOLS:

[iFixit Opening Tool](#) (1)

[Spudger](#) (1)

[Phillips #00 Screwdriver](#) (1)

## Step 1 — Back Cover Removal



- Pry open the back cover by using a fingernail or a plastic opening tool.
- ⓘ There is a small notch at the bottom of the cover for easy removal.

## Step 2 — Battery Removal



- Remove the battery from the phone.
- ① There is a small ledge located at the bottom of the battery for easy removal.

## Step 3 — Screw Removal



- Remove the three Philips #00 screws from the bottom of the phone.
- Two 5.5 mm screws
- One 4 mm screw



## Step 4 — Speaker Removal



- Use your finger or opening tool to wedge the speaker out starting at the small notch at the bottom of the phone.

## Step 5 — Buttons



- ① Remove the three buttons from the side and the top of the phone.
  - Power button
  - Volume button
  - 3D camera button

## Step 6



- Place the plastic opening tool under the bezel at either bottom corner of the HDMI cover.

**i** This loosens both the HDMI and USB covers for easy removal.

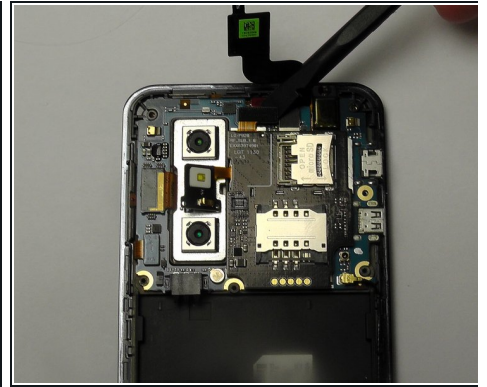
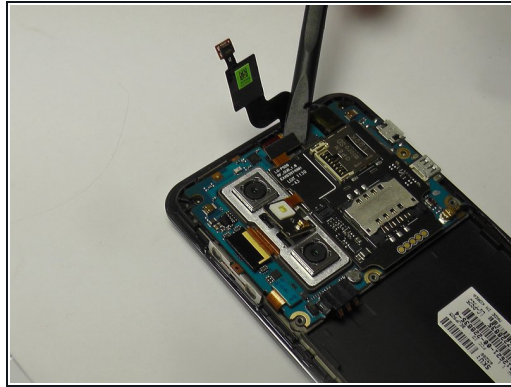
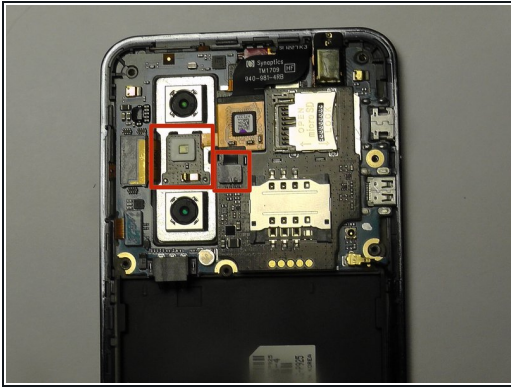
- USB Cover
- HDMI Cover

## Step 7



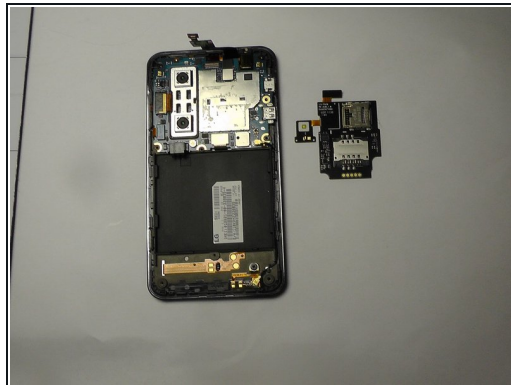
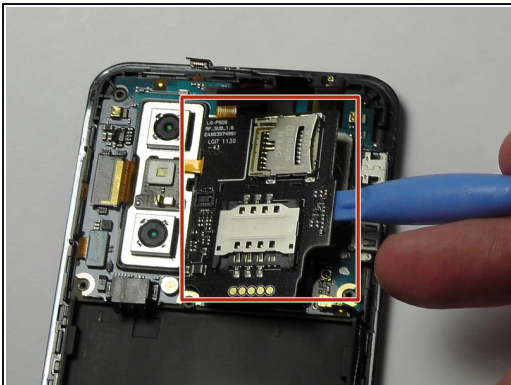
- Remove the six Phillips #00 screws within the mid-cover bezel.

## Step 8 — Ribbon Cable Disconnection



- Utilize a spudger or plastic opening tool and gently disconnect the ribbon cable that is attached to the black micro-SIM card board.

## Step 9 — SD/SIM Card Board Removal



- Carefully pry the board up to detach it from its place in the phone.
  - Make sure to pry off the small tab connected to the camera unit as well.

To reassemble your device, follow these instructions in reverse order.