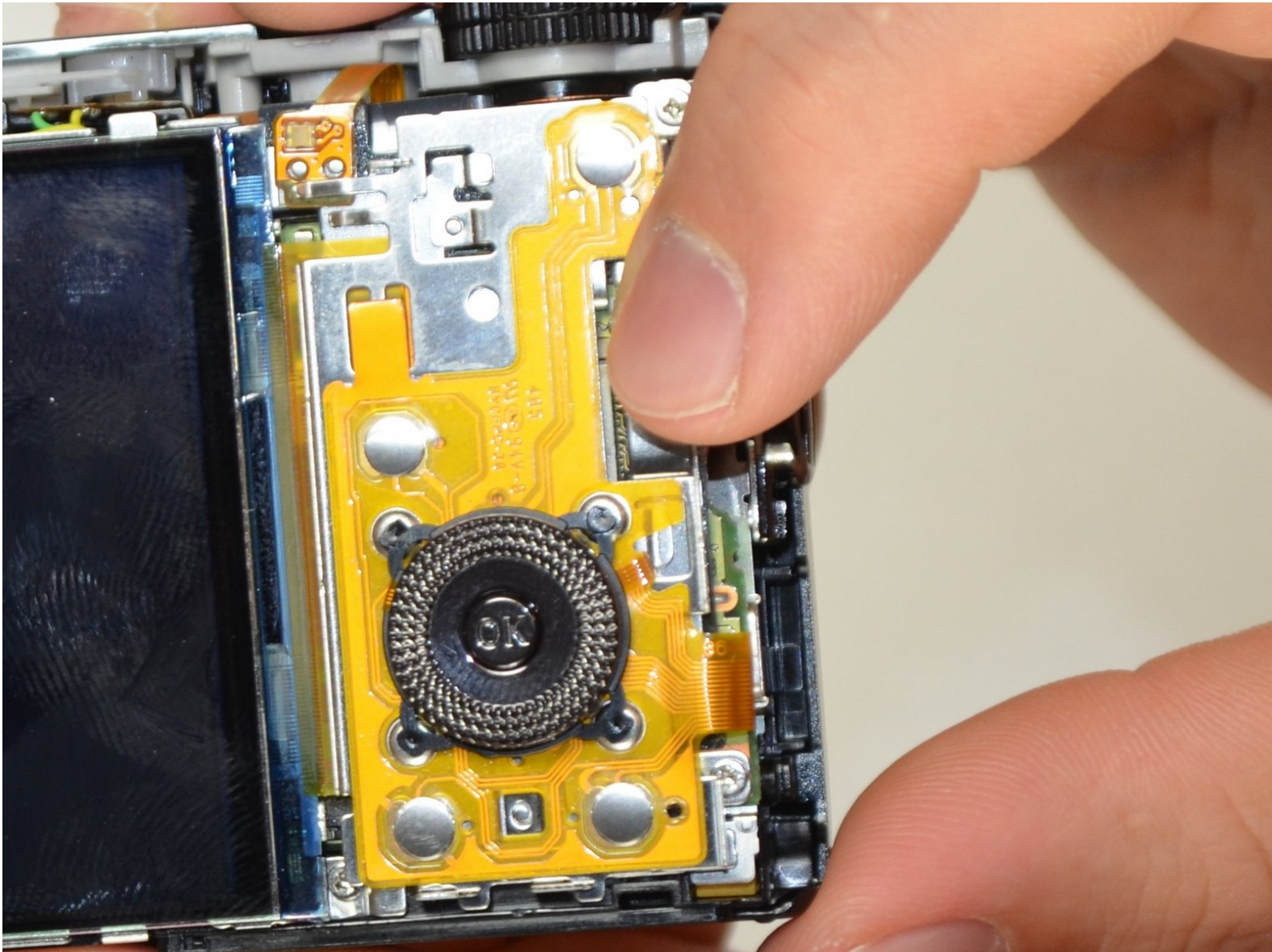




Nikon COOLPIX S9500 Navigation Panel Replacement

Replacing the Navigation Panel in the camera.

Written By: Jim Bui



INTRODUCTION

Something is wrong with the Navigation Panel? Try replacing it.



TOOLS:

- [Phillips #00 Screwdriver](#) (1)
 - [iFixit Opening Tools](#) (1)
-

Step 1 — Removing Screws



- Remove the three 4 mm screws from the bottom of the camera using a #00 Phillips screwdriver.
- Remove the single 3.5 mm screw from the bottom of the camera using a #00 Phillips screwdriver.

Step 2



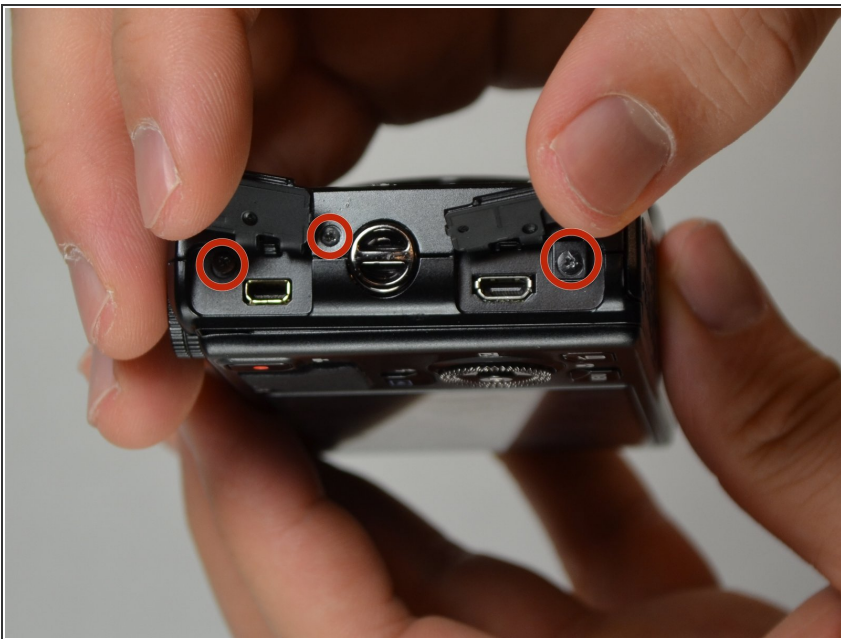
- With the bottom of the camera facing you, slide the latch on the compartment to the left.
- Swing the battery compartment door open.
- Remove the 3.5 mm screw from the inside with a #00 Phillips screwdriver.

Step 3



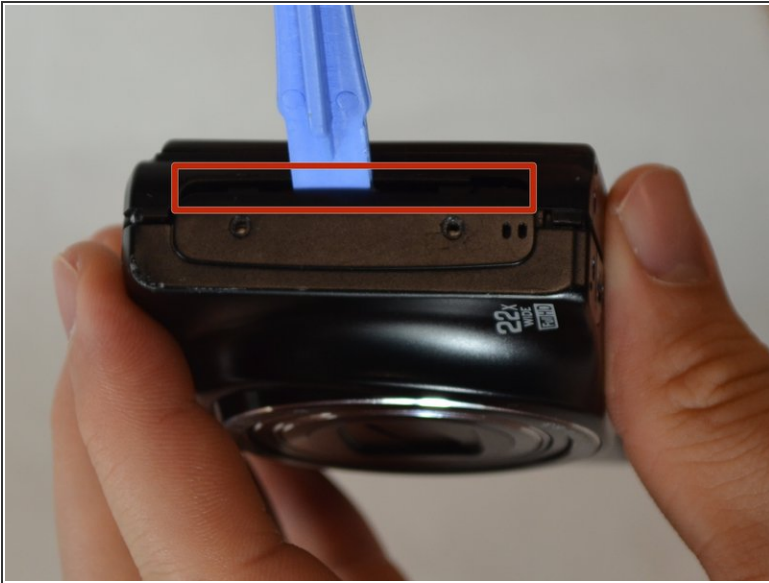
- With the screen facing you, locate the two 3.5 mm screws on the left face of the camera. Remove them using a #00 Phillips screwdriver.

Step 4



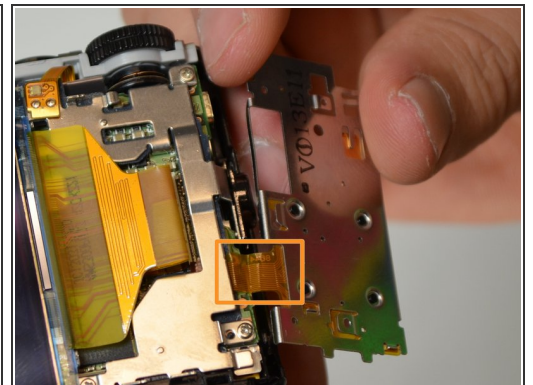
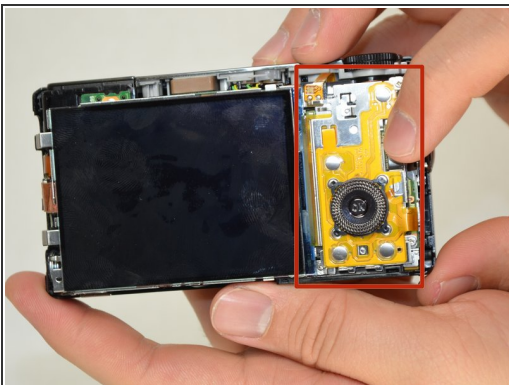
- With the screen facing you, locate the three 3.5 mm screws on the right face of the camera. Remove them with a #00 Phillips screwdriver.
- ⓘ Two of the screws are located under the port tabs.

Step 5



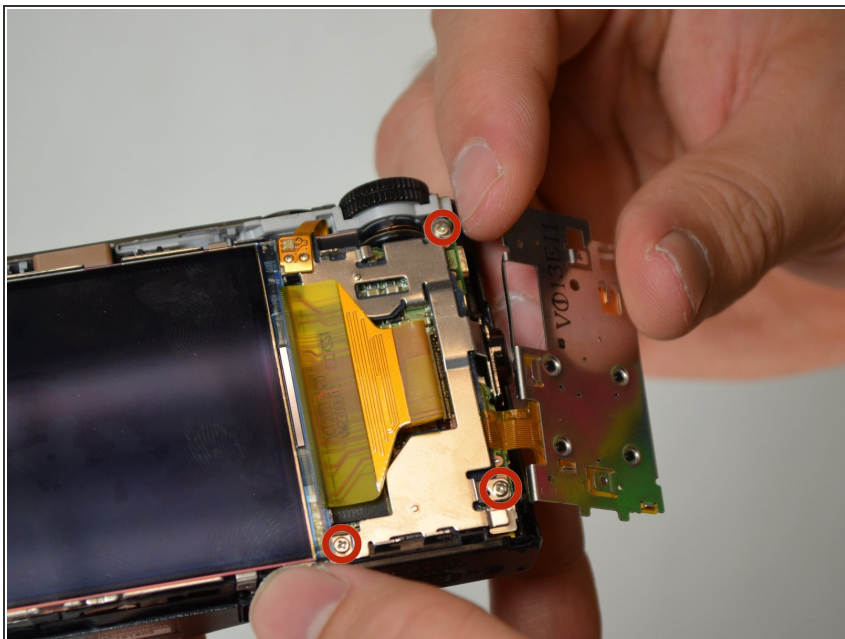
- Locate the crease where the case comes together.
- Using a plastic prying tool, pry at the line to remove the camera case.
- ⓘ It may take several attempts to remove the case. Remember to pry at all the crease locations on the camera, and not just one spot.

Step 6 — Navigation Panel Removal



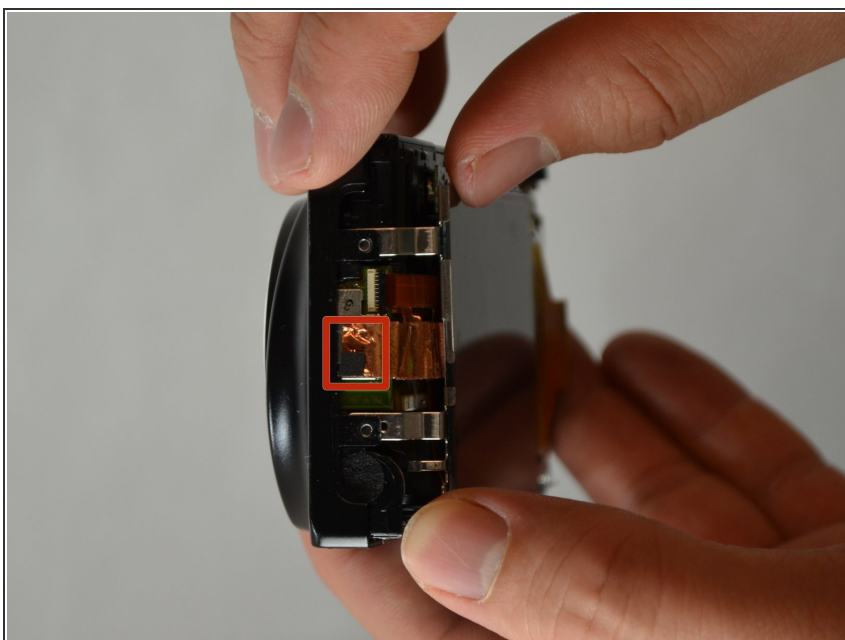
- Slide the yellow navigation panel to the right so that it can be lifted up.
- ⓘ It may take a little pressure to get the panel to separate.
- ⚠ Be careful not to damage the ribbon cable that is still attached to the camera.

Step 7



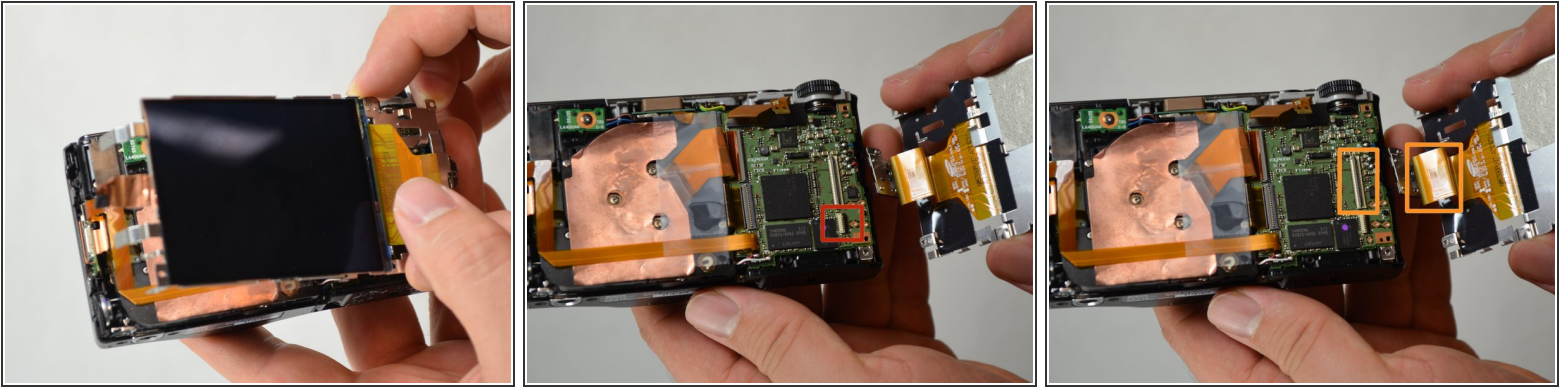
- Remove the three 4 mm screws with a #00 Phillips screwdriver.

Step 8



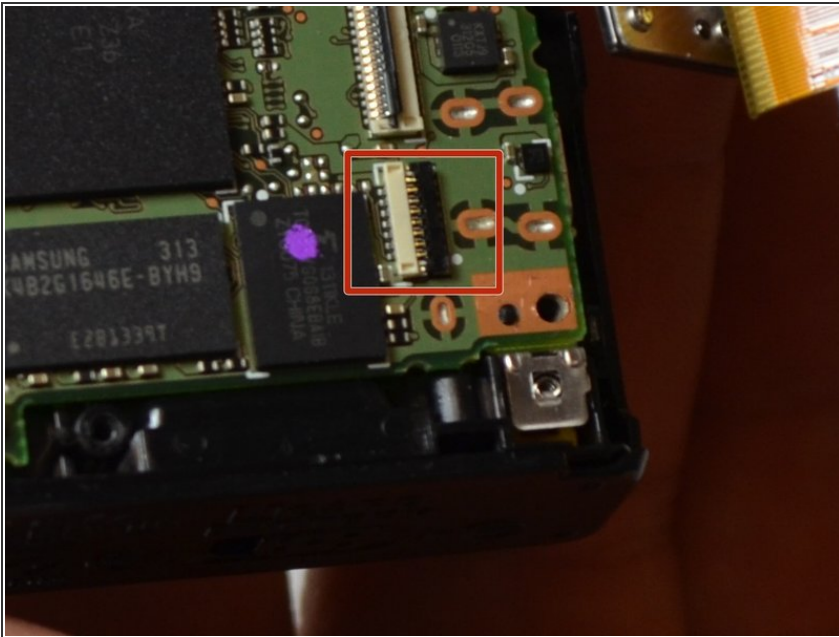
- Locate the magnet and copper tape on the left side of the camera.
- Gently pull the copper tape off of the metal plate.
- ⓘ The copper tape is attached with some glue, so a little force will be needed to detach it.

Step 9



- Lift the screen up and swing it to the right, exposing the circuit board underneath.
- ❗ The navigation panel should still be attached to the circuit board with a ribbon cable as indicated in red.
- Detach the ribbon cable that is connecting the LCD screen and the circuit board.

Step 10 — Navigation Panel



- Detach the ribbon cable connecting the navigation panel to the camera.
- The navigation panel can now be removed.

To reassemble your device, follow these instructions in reverse order.