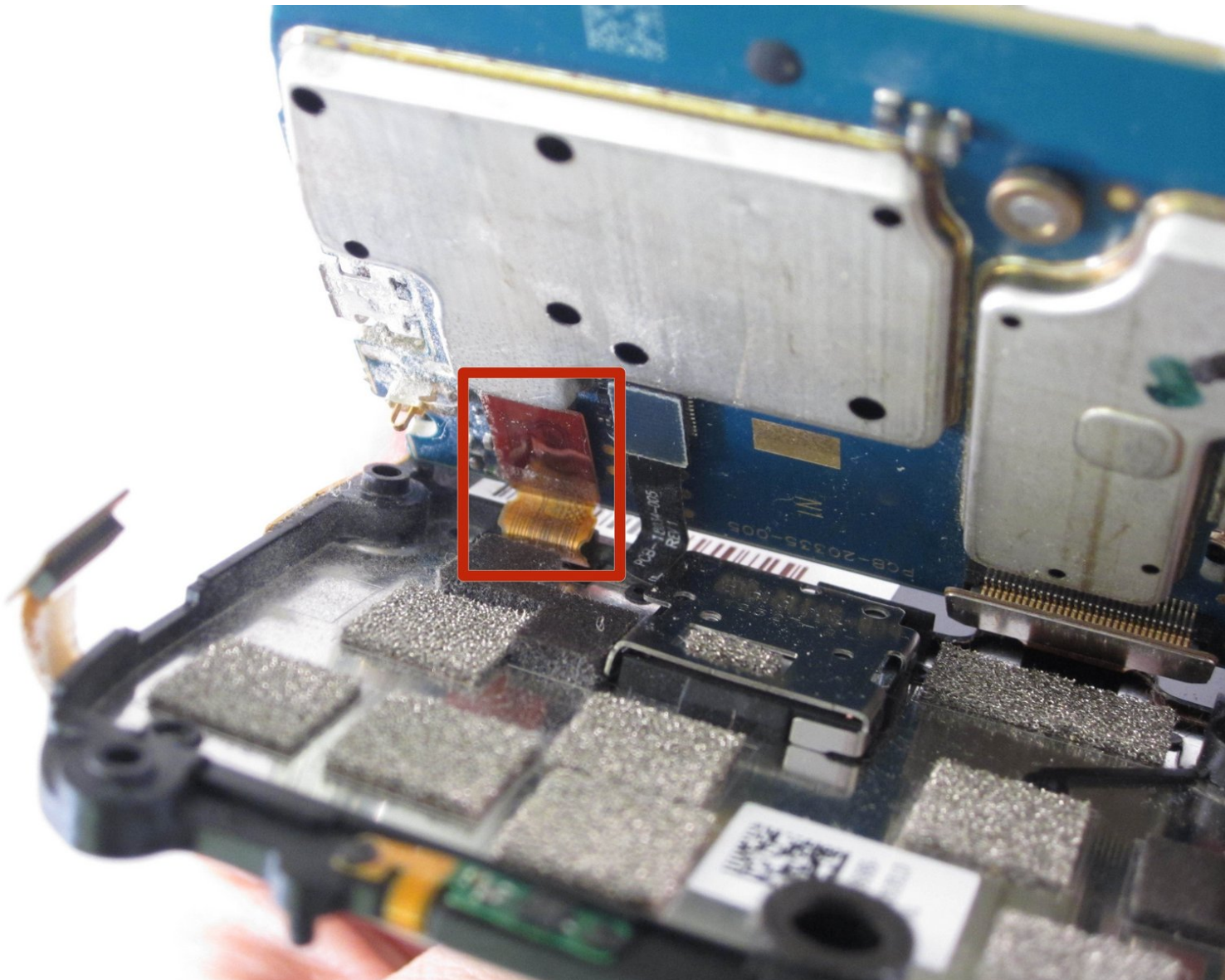




BlackBerry Tour 9630 LCD Screen Replacement

If your screen is cracked or damaged, then you...

Written By: Mia



INTRODUCTION

If your screen is cracked or damaged, then you will need to replace your screen. Use these step-by-step instructions to replace your BlackBerry Tour 9630 LCD screen.



TOOLS:

- [iFixit Opening Tool](#) (1)
 - [T6 Torx Screwdriver](#) (1)
-

Step 1 — Battery



- Flip phone over so the back side is facing up.

Step 2



- Push up on the center silver button to release the back cover.
- Remove the back cover.

Step 3



- Grip the battery where the light grey half circles are located and pull up on the battery.
- Remove the battery.

Step 4 — Keypad



- If there is an SD card, press gently on the card and slide up to remove.
- If there is a SIM card, press gently on the card and slide left to remove.
- Use the T6 Torx screwdriver to remove the four 8.00mm screws from the back of the phone.

Step 5



- Using the large blue plastic opening tool, pry the top plastic covering off.
- ⓘ There is glue holding the top plastic covering. Additional pressure may be needed.

Step 6



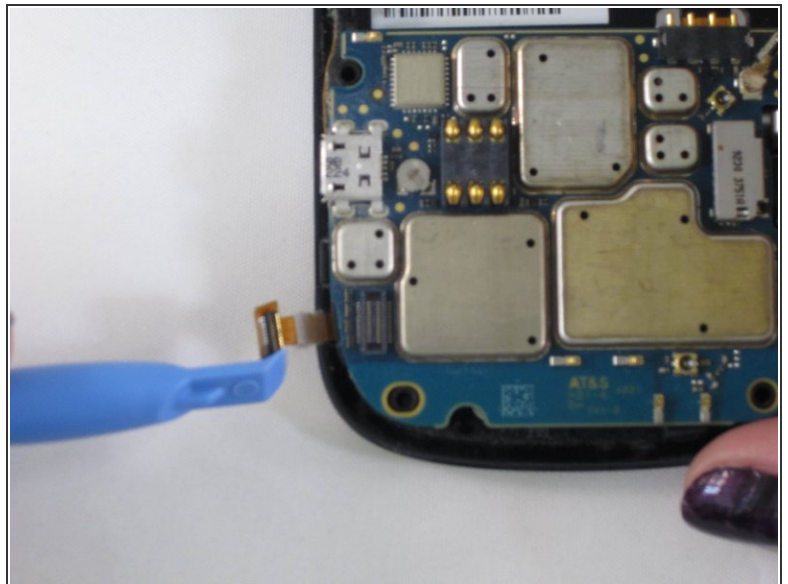
- Use the T6 Torx screwdriver to remove the two 8.00mm screws from the top of the phone.

Step 7



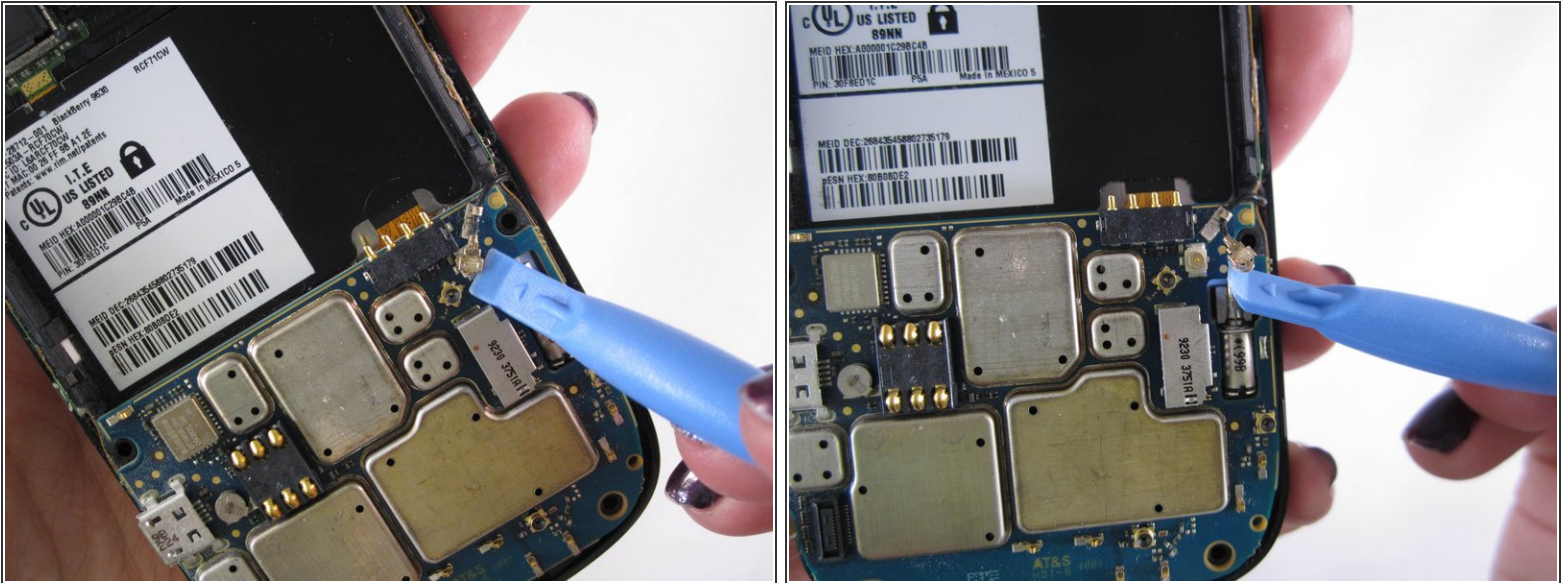
- Remove the back casing by wiggling it open.

Step 8



- Using the small plastic opening tool, pry up the pop ribbon cable from the motherboard.

Step 9



- Using the small plastic opening tool, remove the side antenna cable.

Step 10



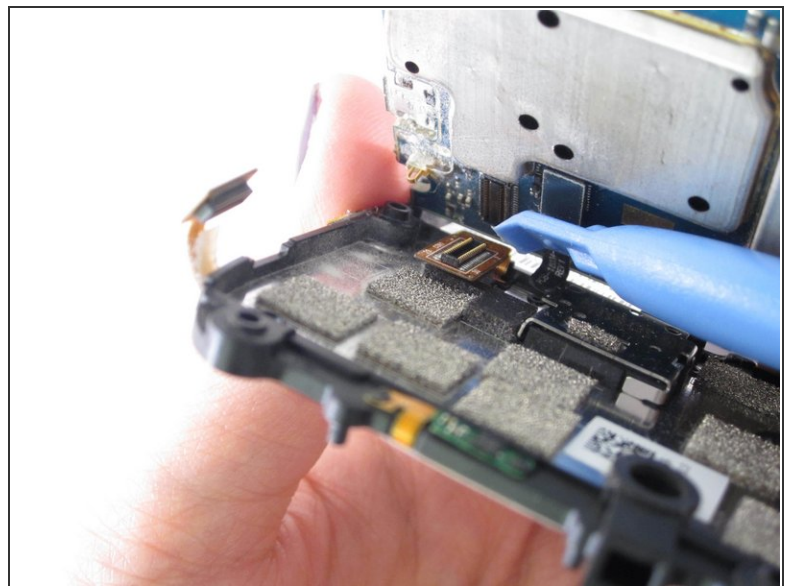
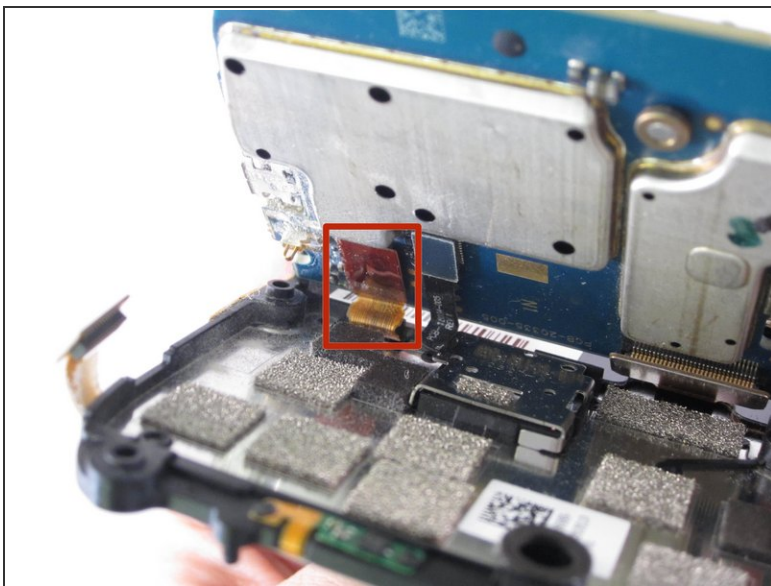
- Gently push up on the keyboard and snap the front cover off.
- ❗ Once you remove the front cover, the keypad and trackball will be loose.

Step 11



- Remove the keypad.

Step 12 — LCD Screen



- Gently lift the motherboard to expose several ribbon cables.
- Use the small plastic opening tool to disconnect the orange LCD ribbon from the square end of the ribbon cables.

Step 13



- Flip the phone over. Using the large plastic opening tool, pry the LCD screen from the motherboard.
- Replace the LCD screen
- ① The LCD screen is held in place with glue.

To reassemble your device, follow these instructions in reverse order.