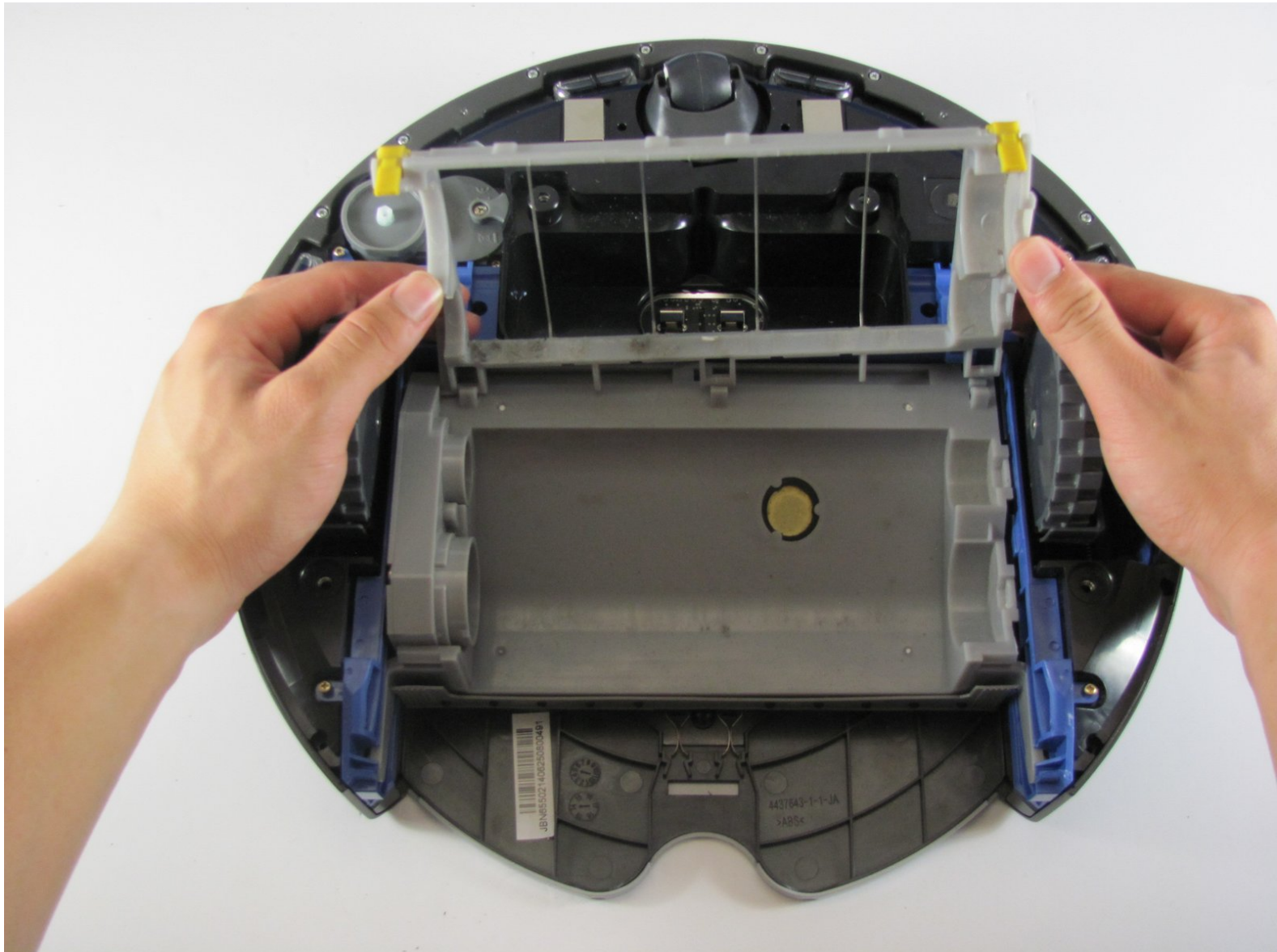




iRobot Roomba 655 Pet Series Brush Motor Replacement

How to access and remove the brush motor on your Roomba.

Written By: Matt Davis



INTRODUCTION

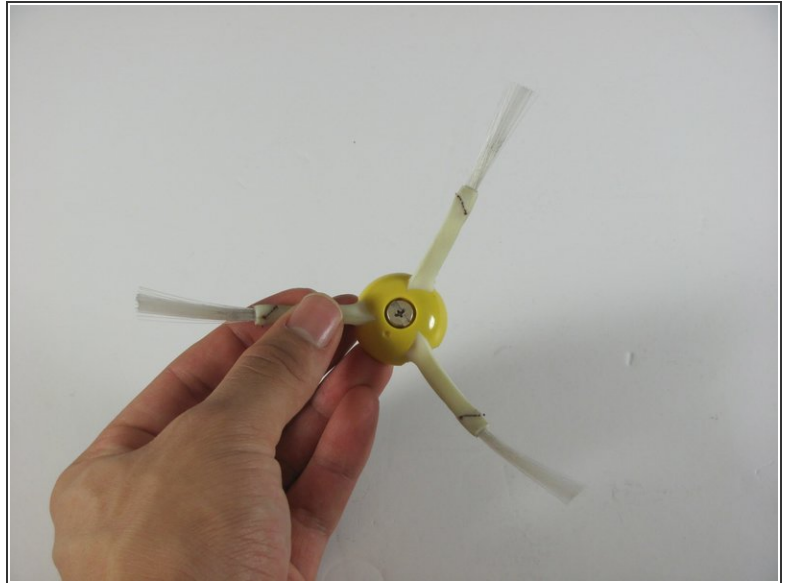
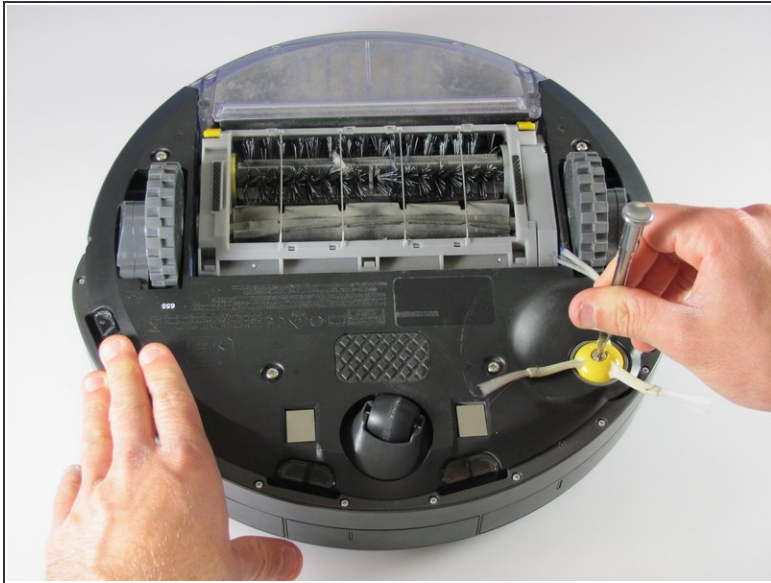
The Brush motor is what keeps your cleaning machine cleaning! These steps take some time, so patience is key in order for your device to work properly. You'll need to know how to solder to complete this guide.



TOOLS:

- [Phillips #2 Screwdriver](#) (1)
 - [Spudger](#) (1)
 - [Phillips #0 Screwdriver](#) (1)
 - [Soldering Gun / Iron and Solder](#) (1)
-

Step 1 — Removing the Side Brush



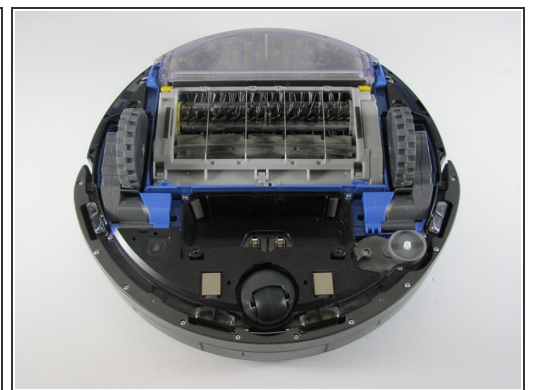
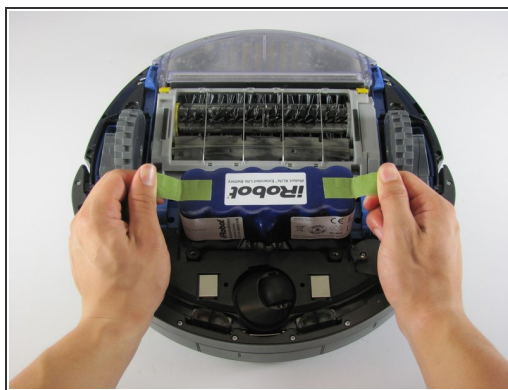
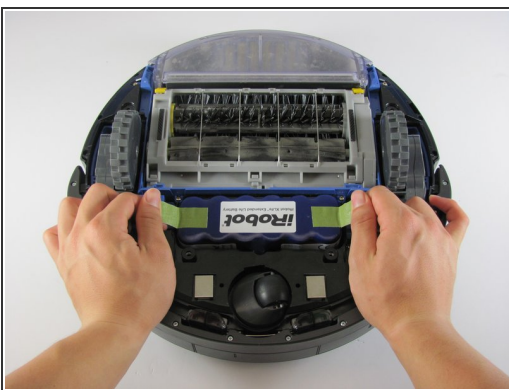
- Flip the device over onto its back.
 - Find the side brush, and unscrew the single screw that connects to brush motor by using the Phillips head #2 screwdriver.
- i** This screw doesn't completely come out of the yellow side brush.*

Step 2 — Removing the Back Panel



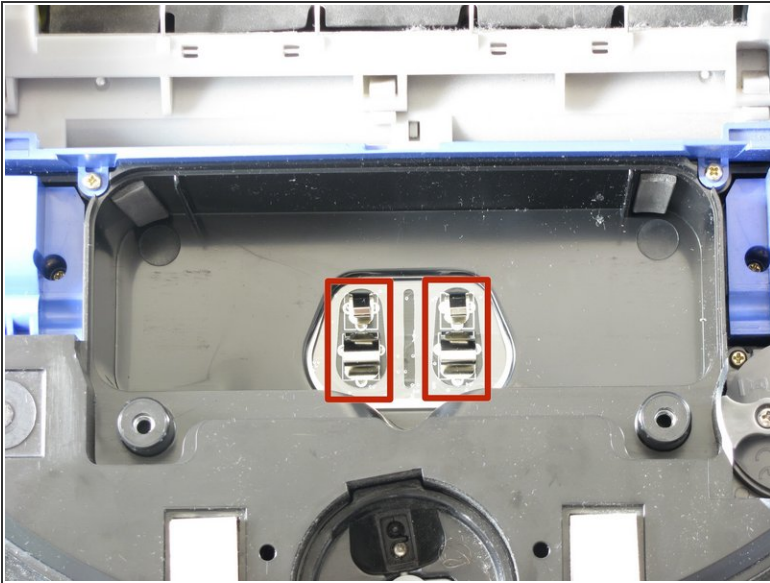
- Using a Phillips #1 screwdriver, remove the four screws on the back panel.
- Once the screws are loose gently pry the back plate away from the body by using the spudger tool.
- ⓘ *The screws don't completely come out of the panel, but it will still come apart once unscrewed.*

Step 3 — Removing the Battery



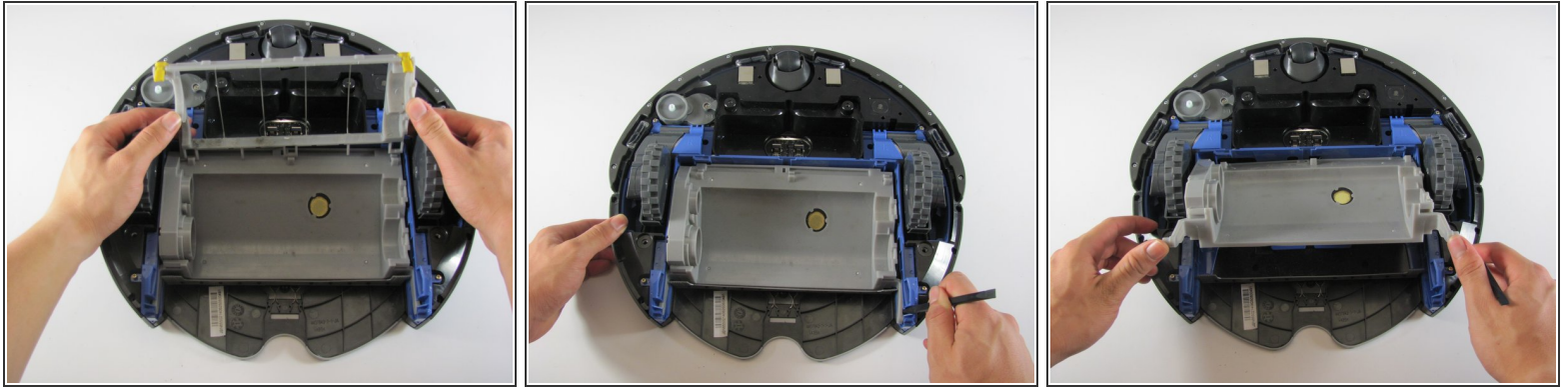
- Grab the two pieces of green tape with your thumb and index finger
- Pull up on the battery in an upwards direction to remove it

Step 4 — Battery Contact Points



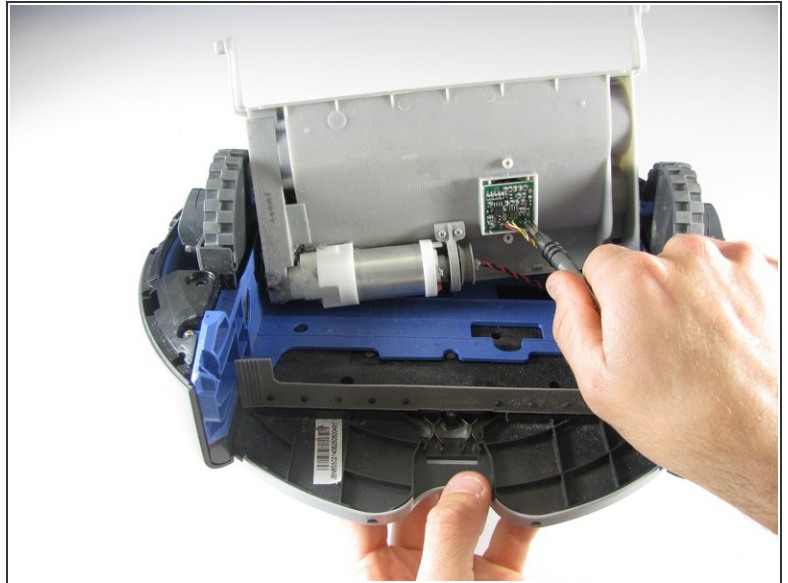
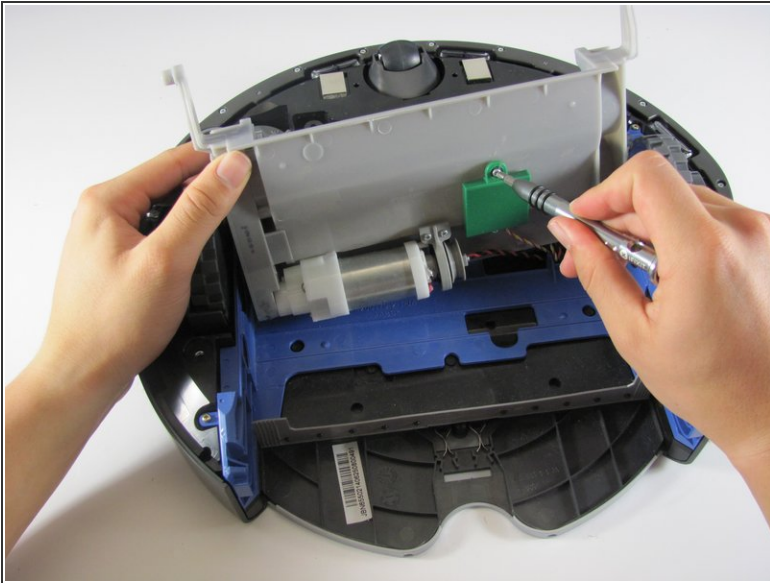
- These are the contact points on the Roomba for the battery
 - These are the contact points on the battery
- i** If these contact points are dirty, they can be cleaned with a moist microfiber cloth (distilled water recommended)

Step 5 — Brush Motor Removal



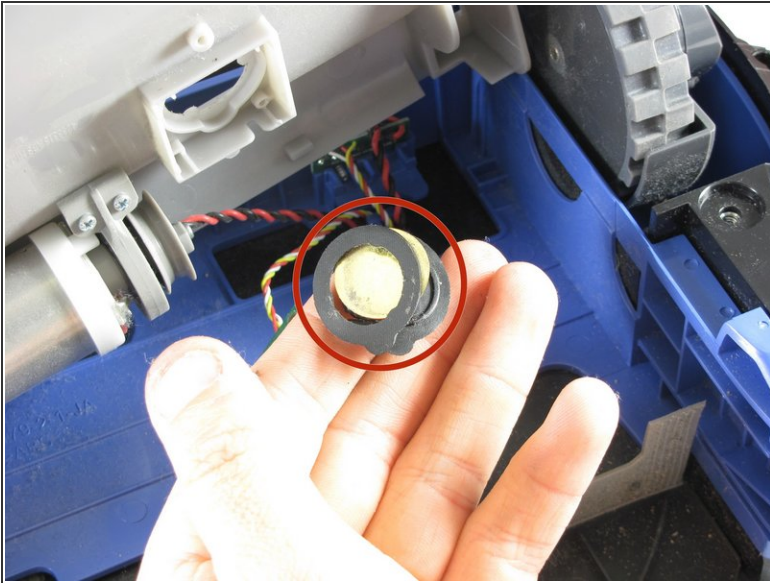
- Insert a spudger into the side to pop out one side of the brush holder.
 - Repeat the same step, but now on the other side of the brush holder.
 - Lift the gray plastic piece up carefully to expose the motor.
- ⚠ Do not pull up too hard because you could snap a wire attached to the motor or motor circuit board.

Step 6



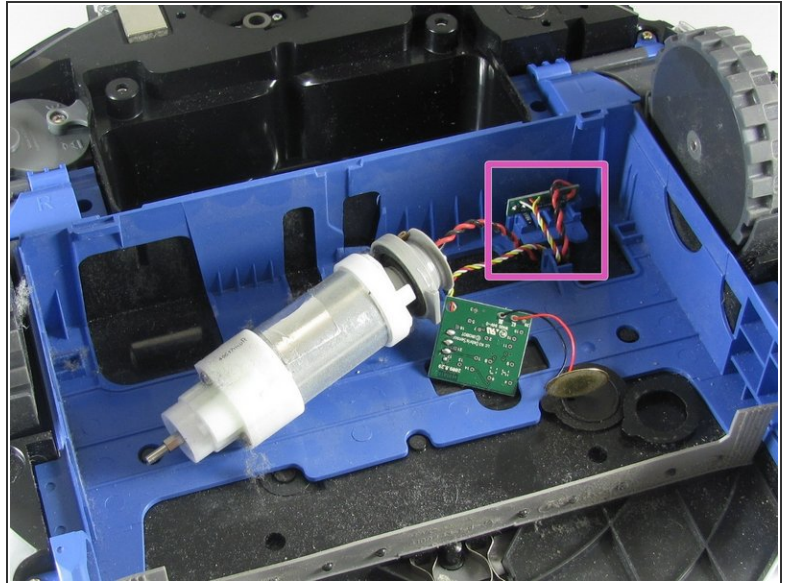
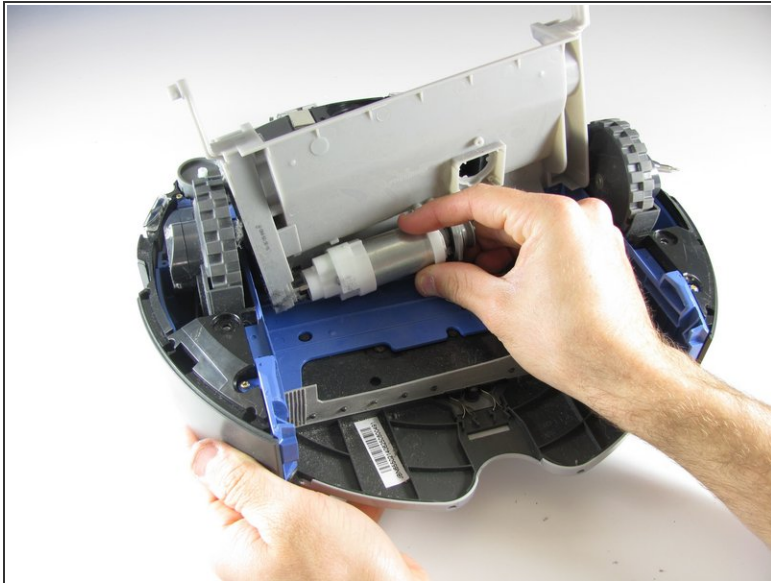
- Use a Phillips #0 to remove the two 6 mm screws securing the green circuit board protector.
- Remove the 6mm Phillips screw attaching the circuit board. Doing so should give you access to the circuit board.

Step 7



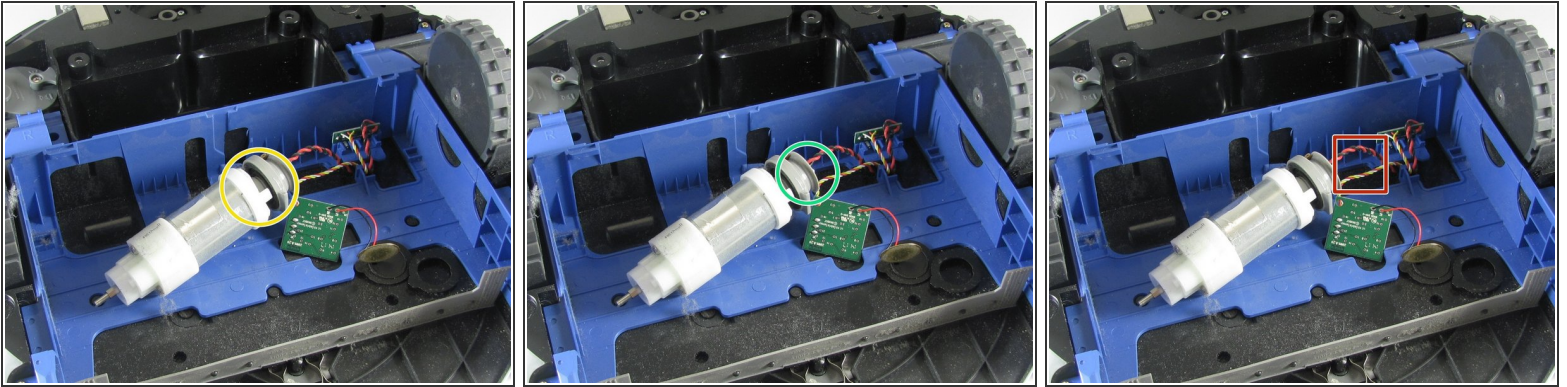
- These rubber rings protect the motor circuit board from dust accumulated in the Roomba.
⚠ Do not lose these rubber rings.
- Remove the two - 7mm screws that connect the motor to the grey plastic protector. Use a Phillips head #0 this time.

Step 8



- To remove the motor, simply pull it out gently from the plastic brush holder.
- These parts are soldered onto the blue frame. Use our [How to Solder and Desolder Connections guide](#) for more information on soldering.

Step 9



- **Option A:** Some motors can unclip from the wiring harness. Use the spudger to pry the white colored base of the motor from the gray piece on the end.
- Clip the new motor into the gray plastic in the same configuration you removed the original motor.
- **Option B:** If your replacement motor does not have wires pre-attached, snip the existing wires near the base of the motor.
 - Solder the snipped wires to the base of the new motor in the same configuration they were with the original motor.
- **Option C:** If your new motor has wires pre-attached, splice the original wires with the respective wires from the original motor.

To reassemble your device, follow these instructions in reverse order.