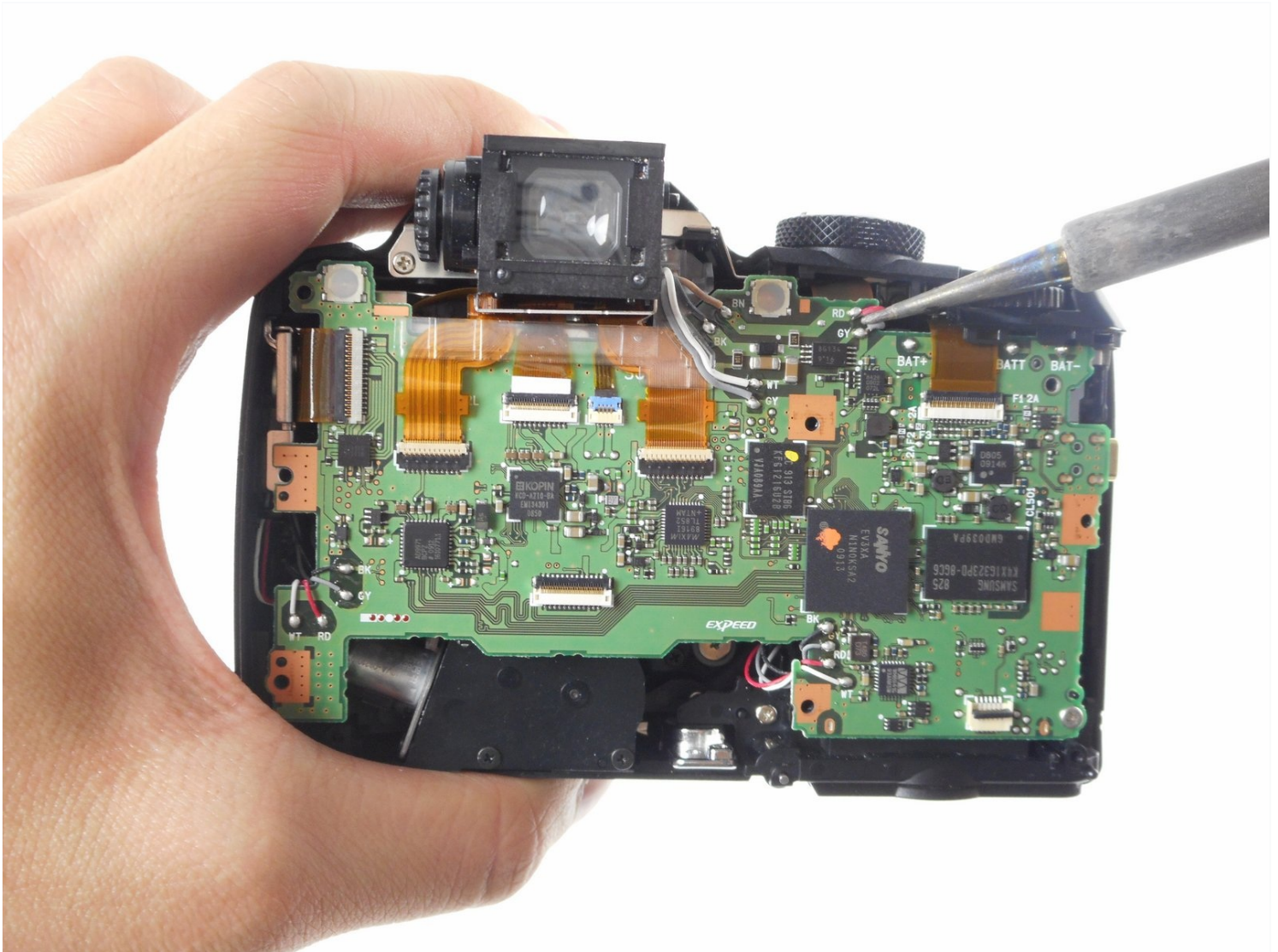




# Nikon Coolpix P90 Motherboard Replacement

If the camera powers on but does not function...

Written By: Elizabeth Kamine



# INTRODUCTION

If the camera powers on but does not function properly (refuses to take pictures, fails to navigate the memory card, prevents access to settings, etc.), you may need to replace the motherboard.

---

## TOOLS:

Phillips #000 Screwdriver (1)

Soldering Iron (1)

---

## Step 1 — Camera Base



- Use your finger to push the latch of the compartment door to the center of the camera body, per image 1.
- Push the door open, and remove the existing battery with your fingers, per images 2-3.

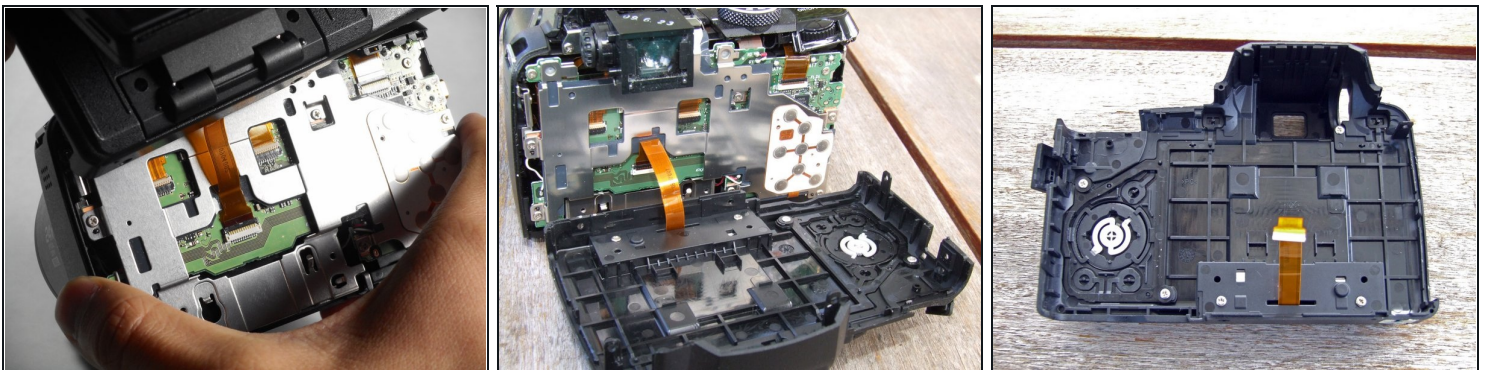
## Step 2 — Motherboard



① Use a Phillips #000 Precision Screwdriver for all of the following steps.

- Remove both 4.5 mm screws holding the bottom into place.
- Remove both 4.5 mm screws holding the side into place.
- Remove the 4.5 mm screw underneath the A/V flap.
- Remove the 4.0 mm screw on the left-side wrist strap loop.

## Step 3

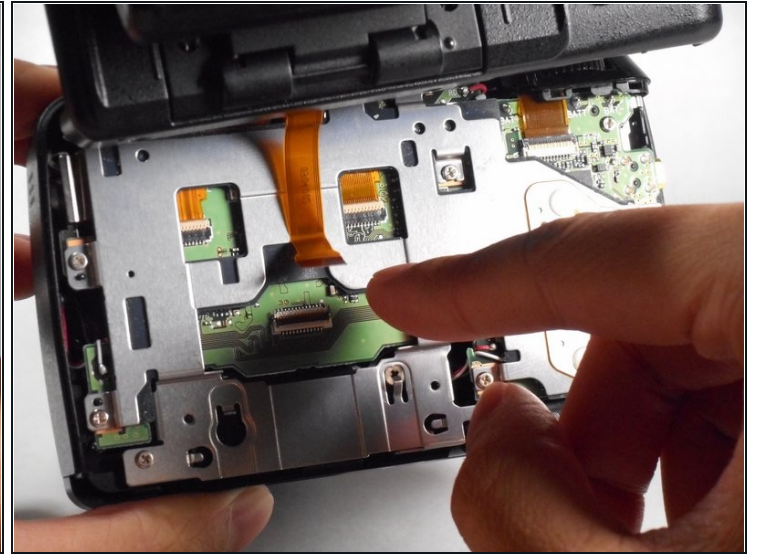


- Carefully lift the back cover from the camera.

⚠ Do NOT completely remove the back cover from the camera yet. There is a data transfer ribbon connecting the LCD screen to the motherboard.



## Step 4



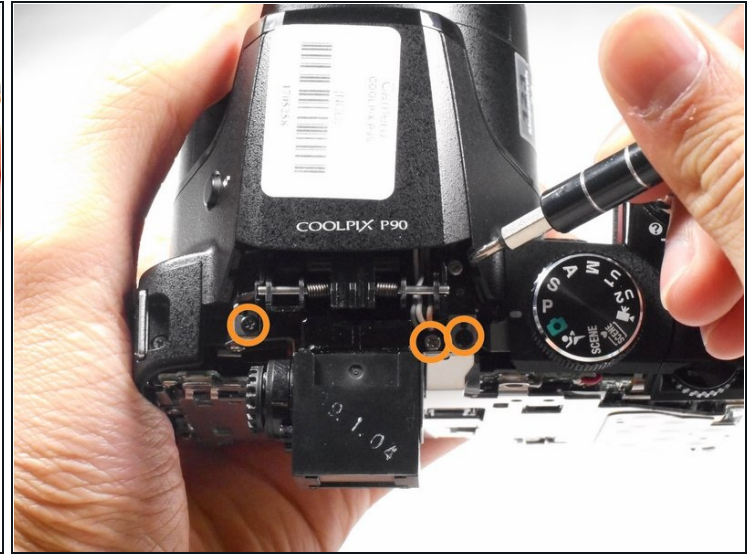
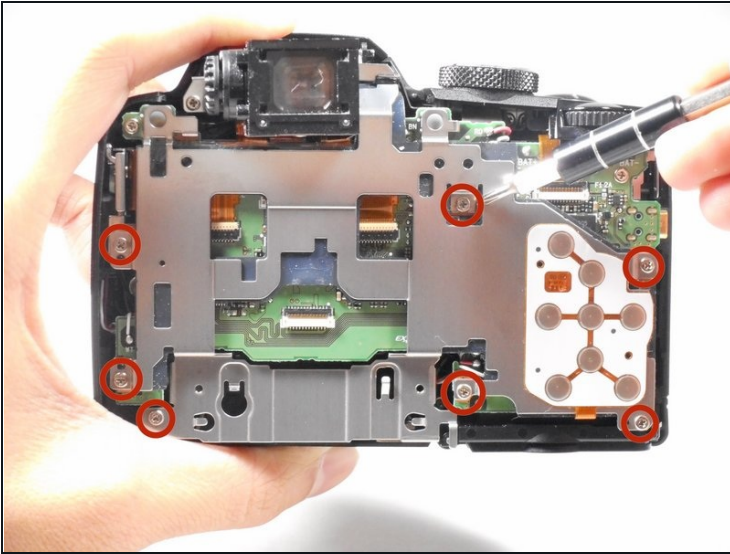
- Press your finger on the top of the latch and pull it down and towards you to open the safety latch and free the ribbon.

⚠ Be careful when releasing the safety latch because it is fragile and may break easily.

- Slide the ribbon out from its socket.

⚠ It is now safe to completely remove the back cover from the camera.

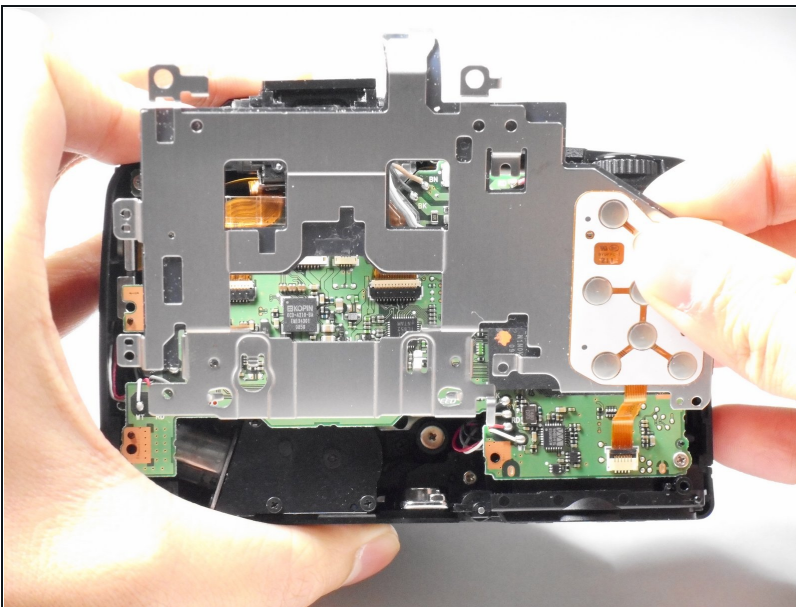
## Step 5



① Use a Phillips #000 Precision Screwdriver for all of the following steps.

- Remove the seven 4.0 mm screws that connect the metal plate to the motherboard.
- Remove the three 4.0 mm screws that connect the metal hinges to the camera body.

## Step 6

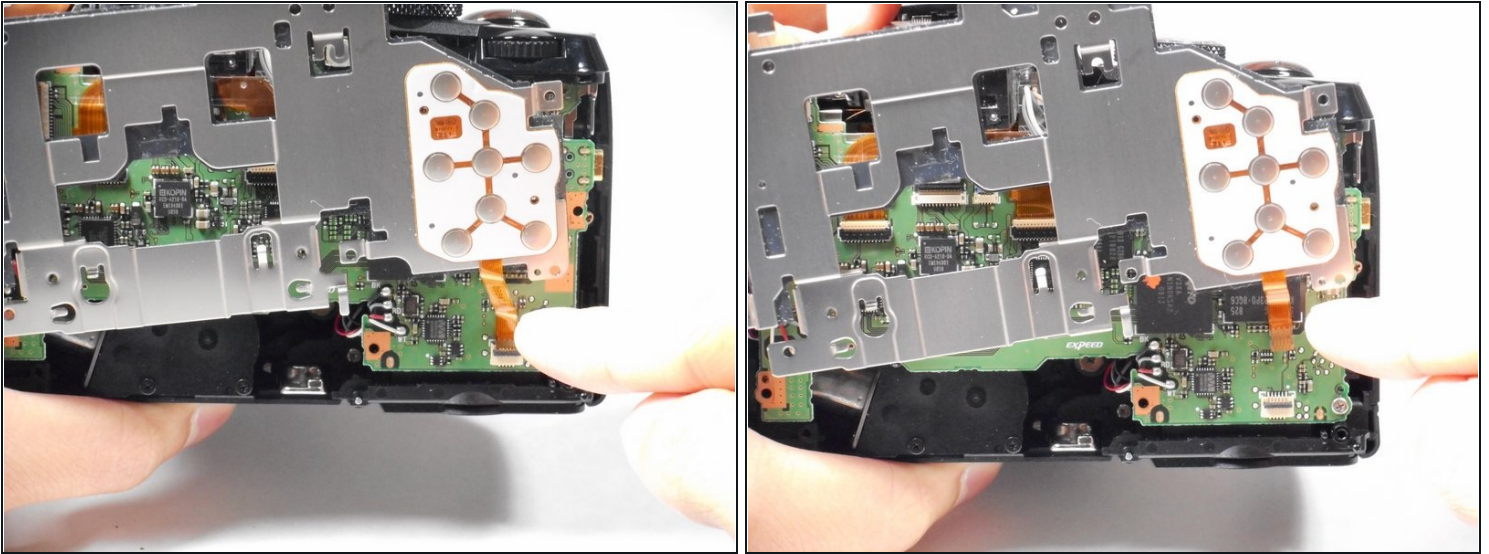


- Carefully lift the metal backing from the motherboard.

⚠ Do NOT completely remove the metal backing yet. There is a data transfer ribbon connecting the metal backing to the motherboard.



## Step 7

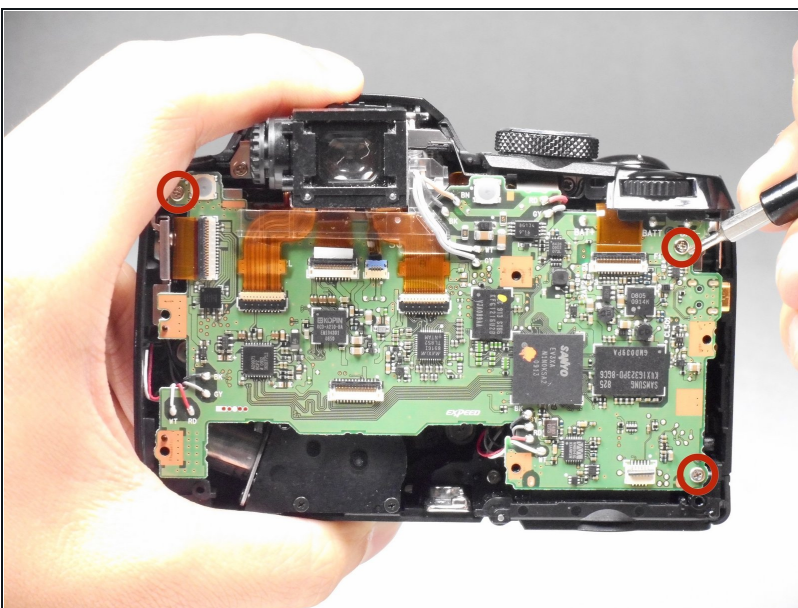


- Press your finger on the top of the latch and pull it down and towards you to open the safety latch and free the ribbon.

⚠ Be careful when releasing the safety latch because it is fragile and may break easily.

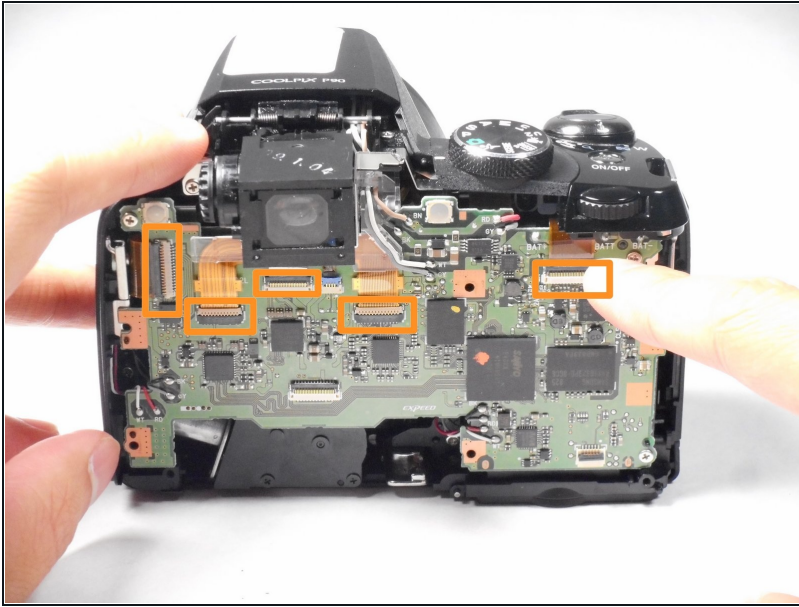
- Slide the ribbon out from its socket.
- ⓘ It is now safe to completely remove the metal backing from the camera.

## Step 8



- Using a Phillips #000 Precision Screwdriver, remove the three 3.0 mm screws from the motherboard.

## Step 9

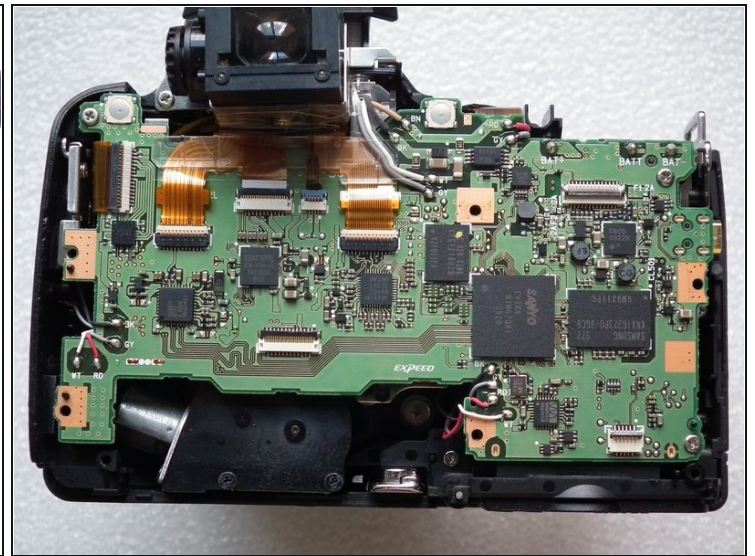
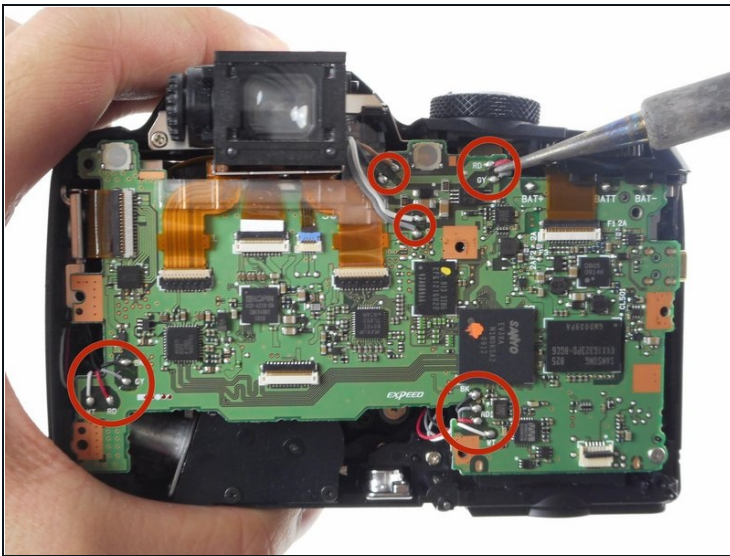


- Press your finger on the top of the latches and pull them down and toward you to open the safety latches and free the five data transfer ribbons.

⚠ Be careful when releasing the safety latches because they are fragile and may break easily.

- Slide the five ribbons out from their sockets.

## Step 10



- Desolder the wires to fully disconnect the motherboard from the camera.

⚠ Be careful! The soldering iron is hot. Do not burn yourself or the device. It should not be applied to the device too long to avoid damaging any of the device components.

- ① For a comprehensive guide on desoldering, visit [iFixit's Soldering and Desoldering Guide](#).

---

To reassemble your device, follow these instructions in reverse order.