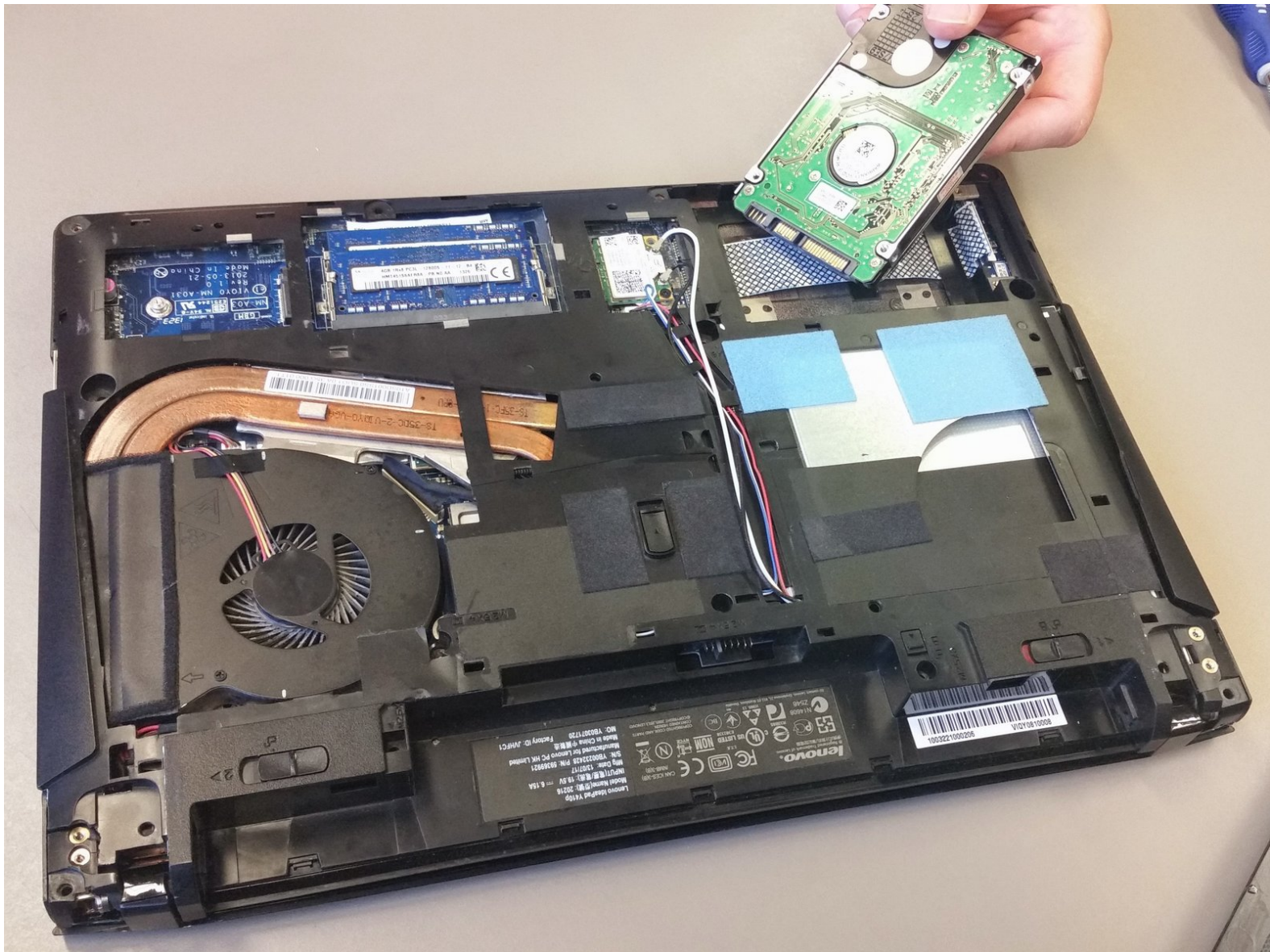




Lenovo Y410P Hard Drive/SSD Replacement

Because the Lenovo Y410P uses a standard laptop...

Written By: Brandon



INTRODUCTION

Because the Lenovo Y410P uses a standard laptop hard drive, it is simple to replace. Hard Drives are often easily accessed, and this drive is no different. The hard drive can be replaced in just 2 simple steps.



TOOLS:

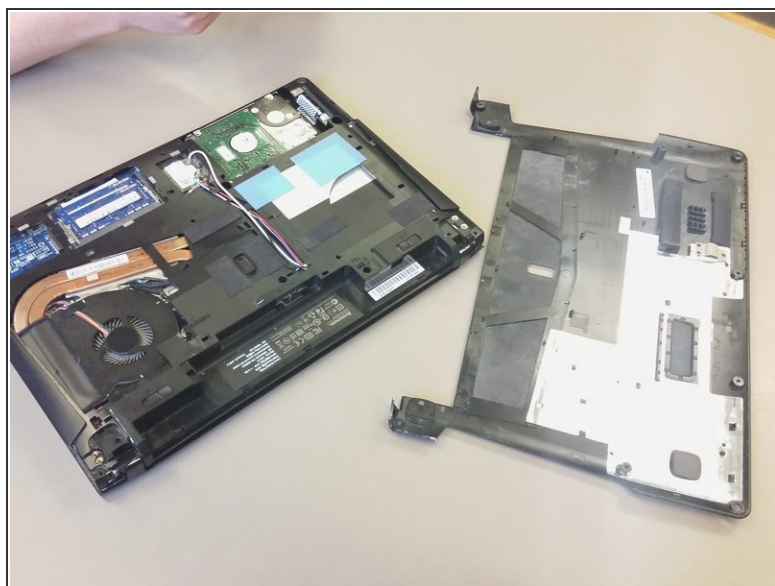
- [Phillips #0 Screwdriver](#) (1)



PARTS:

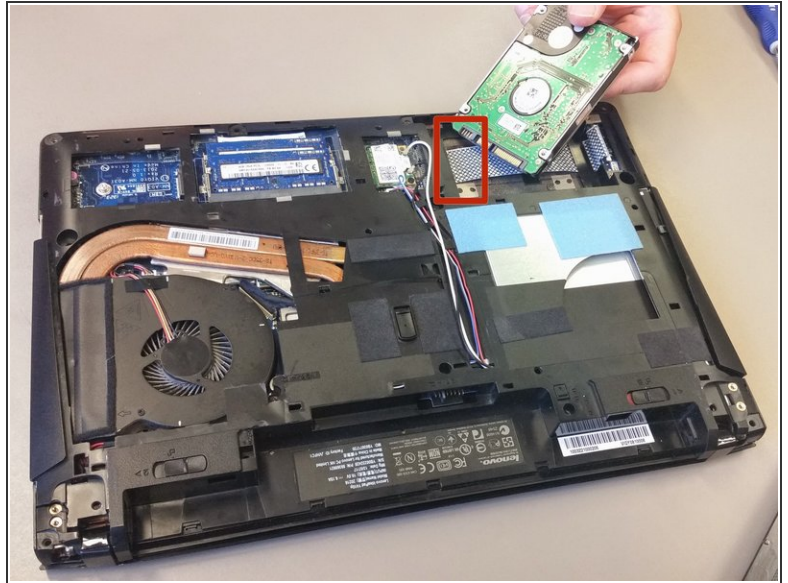
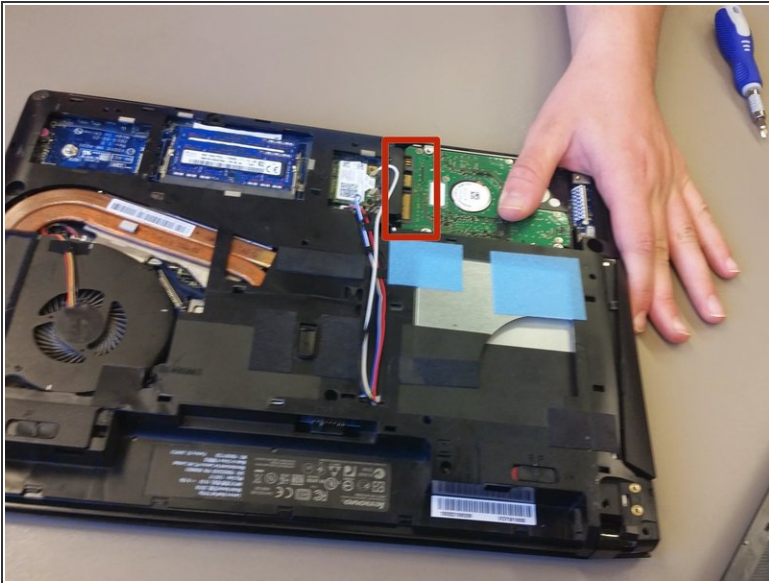
- [1 TB SSD](#) (1)
- [250 GB SSD](#) (1)
- [Crucial MX500 500 GB SSD](#) (1)
- [2 TB SSD](#) (1)

Step 1 — Removal of Bottom Panel



- Remove the eight M2.5x8mm Phillips head screws that fasten the bottom cover.
 - For the Lenovo Y510P, there's another screw in the center that has to be removed.
- Lift bottom cover off and set aside.
 - On the Lenovo Y510P, use a black spudger around the outside edge to pop loose the bottom panel.

Step 2 — Removal of Hard Drive



⚠ If you intend to reuse this Hard Drive/SSD, be careful with the removal. Hard impact may result in damage.

- First remove the two screws at the end of the Hard Drive bracket then slide the Hard Drive/SSD out of its seat.

To reassemble your device, follow these instructions in reverse order.