



# Ematic Model FTABMP2 Camera Replacement

This guide will show you how to replace the camera on the Ematic Model FTFABMP2.

Written By: Timothy



---

## INTRODUCTION

In this guide you will be learning how to fix the Ematic model FTABMP2 camera in three easy steps. A warning though is when taking the Ematic apart use care with parts as well as unplugging components from the motherboard also make sure you discharge yourself from static by touching metal to prevent damage to electrical components.



### TOOLS:

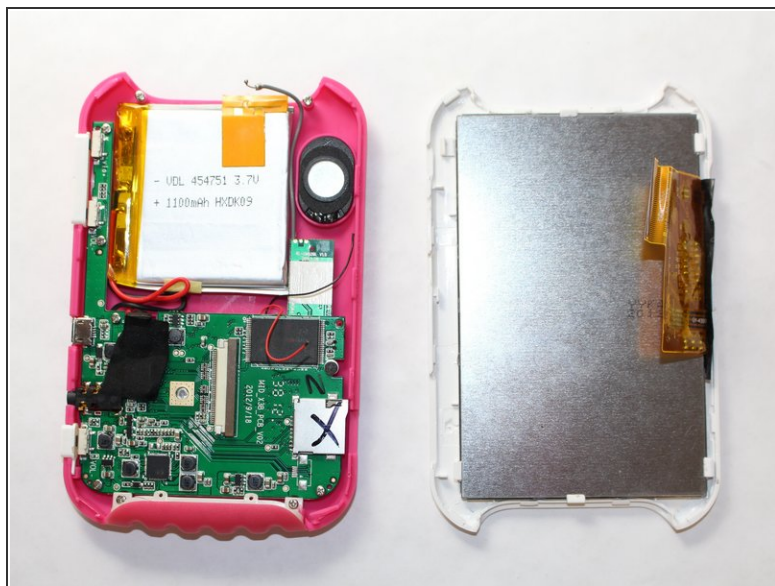
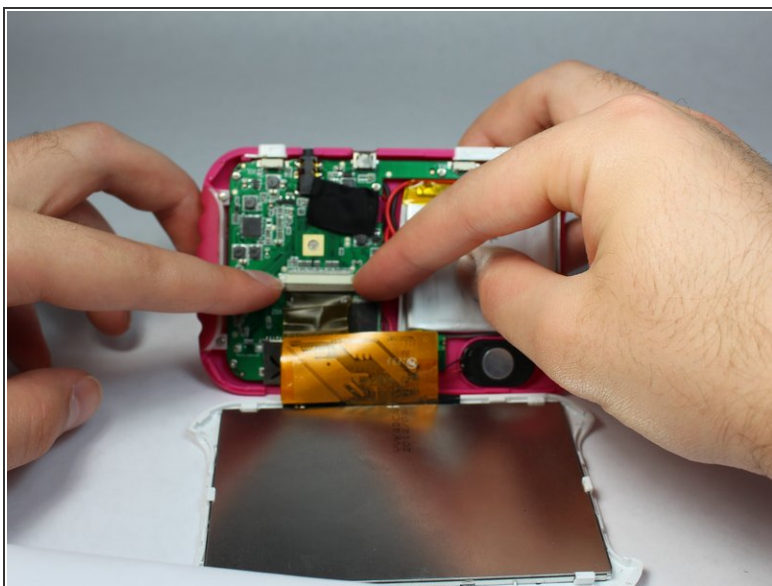
- [iFixit Opening Tool](#) (1)
-

## Step 1 — Camera



- Use the opening tool to carefully pry open the case to reveal the motherboard underneath.

## Step 2

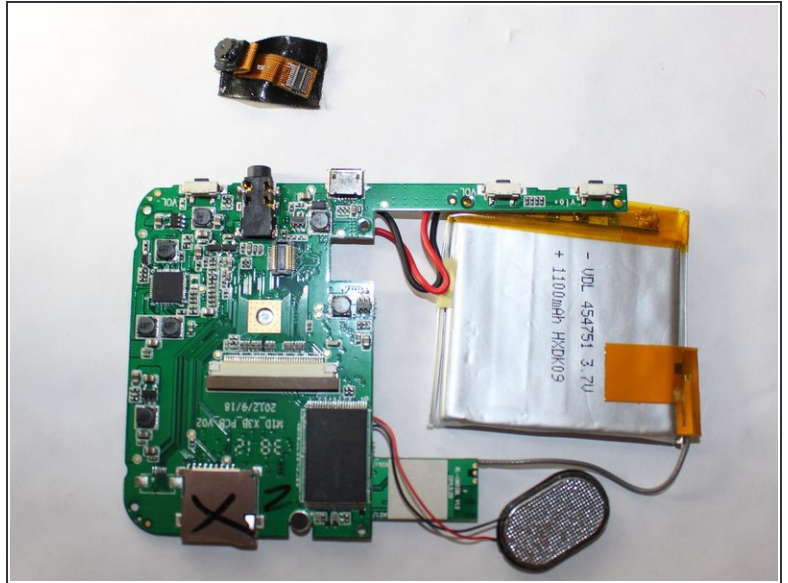
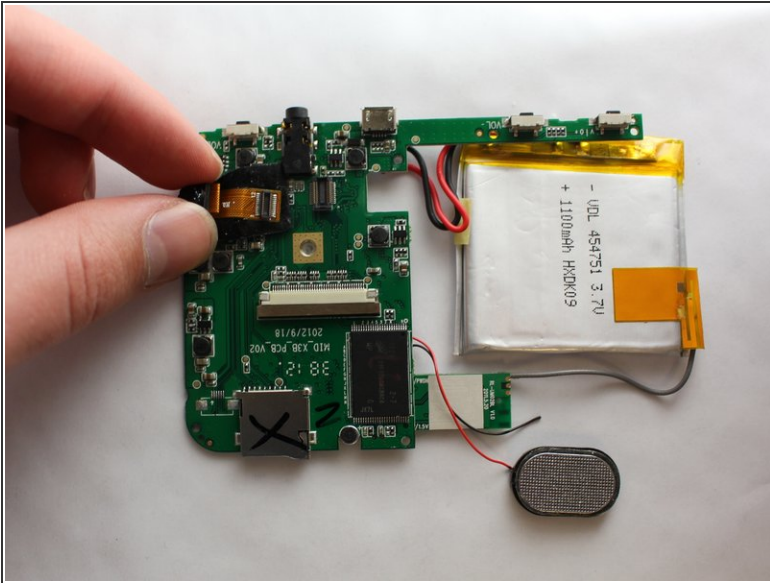


- Flip open the retaining flap on the LCD cable.
- Remove the LCD from the rest of the tablet.

**⚠ Be careful when disconnecting the LCD cable.**



## Step 3



- Carefully unplug the camera from the motherboard.

To reassemble your device, follow these instructions in reverse order.