



# Xbox One Upper Metal Case Replacement

Written By: Andrew Optimus Goldheart



---

## TOOLS:

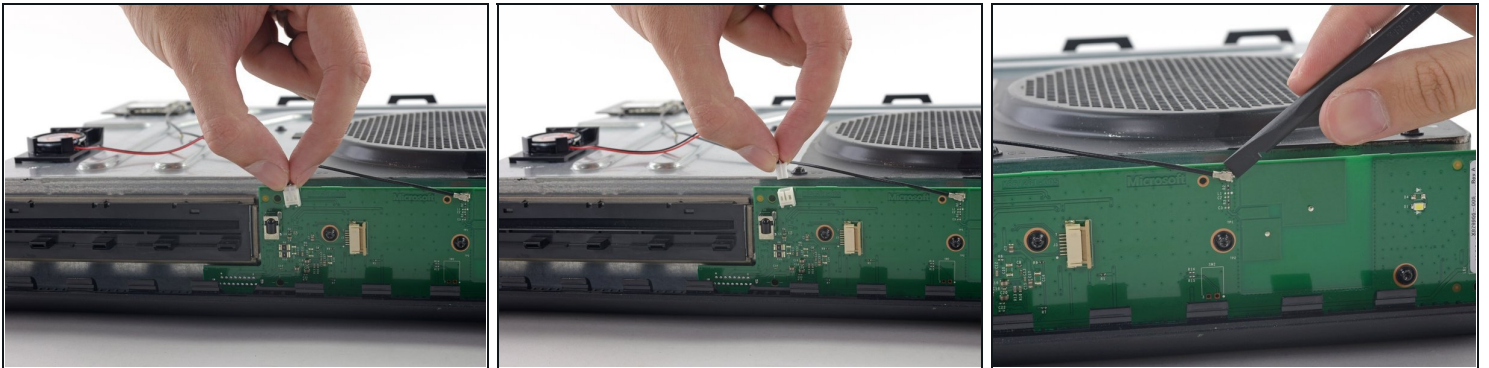
Spudger (1)

TR9 Torx Security Screwdriver (1)


TR10 Torx Security Screwdriver (1)

---

### Step 1 — Upper Metal Case

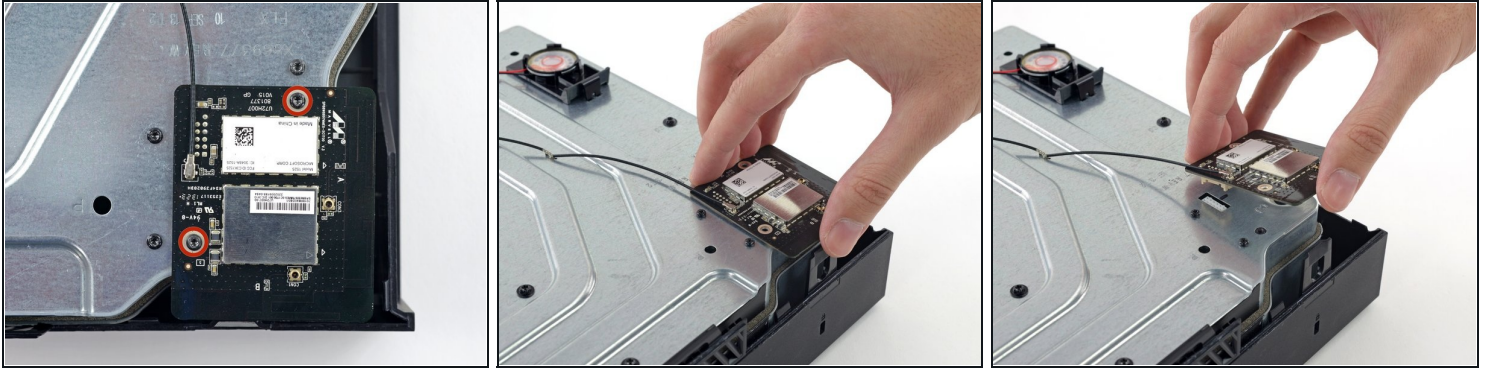


- Gently pull up on the speaker cable connector to disconnect it from the front panel board.

 Be careful to pull up on the cable's connector and not the connector on the board. It's pretty flimsy and you might accidentally pull it off the board entirely.

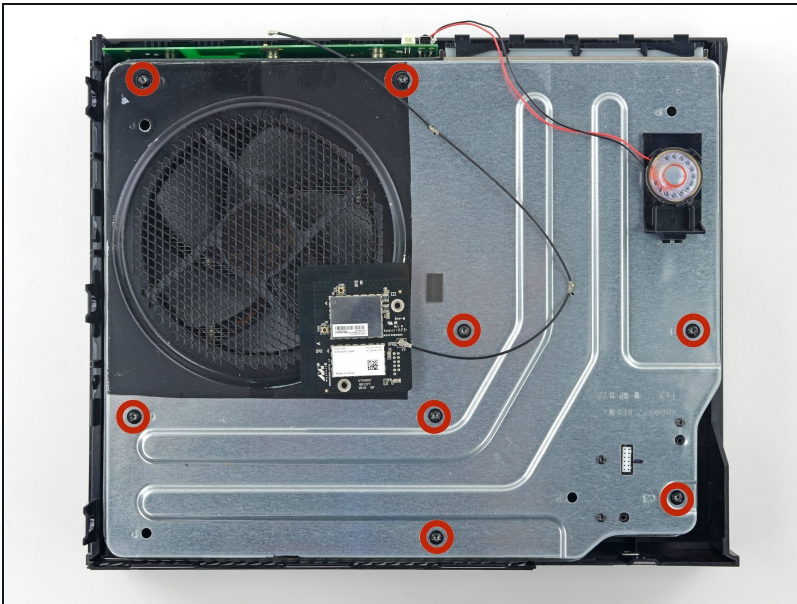
- Use the flat end of a spudger to disconnect the antenna cable from the front panel board.

## Step 2



- Remove the two 9.5 mm T8 Torx screws from the Wi-Fi board.
- Lift the Wi-Fi board straight up from its socket in the upper metal case.
- Leaving the Wi-Fi board antenna cable in place, move the Wi-Fi board aside, exposing the screw labeled "C3" that was beneath it.

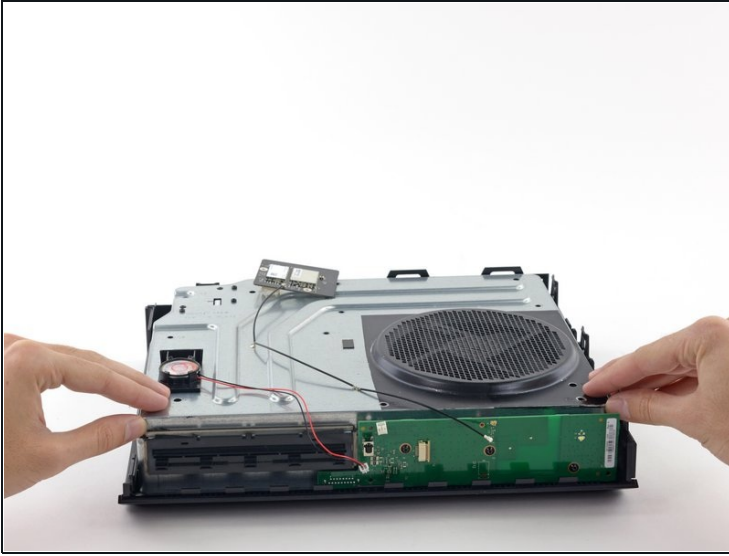
## Step 3



- Remove the eight 65 mm Torx T10 screws from the top of the upper metal case.

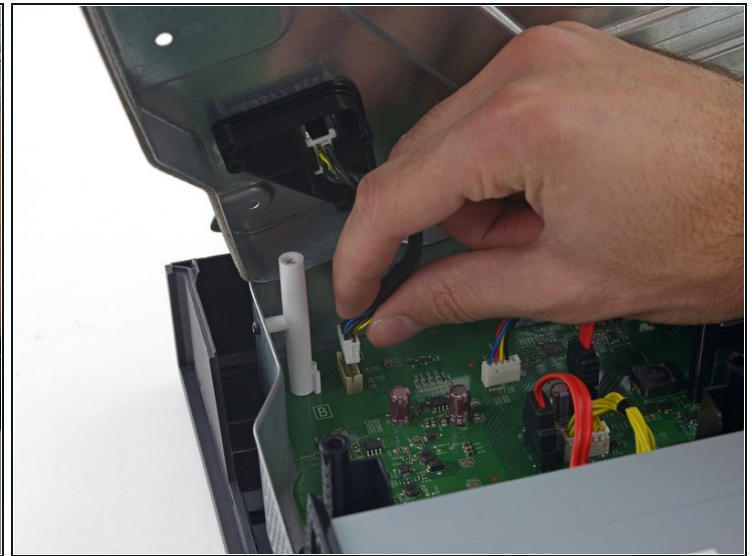
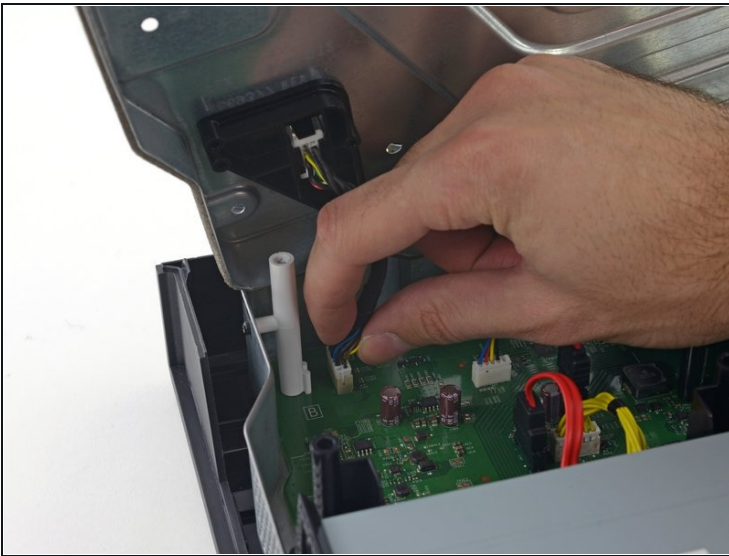


## Step 4



- Lift—but do not remove—the upper metal case.
  - ❗ The Wi-Fi board interconnect cable connects the upper metal case to the motherboard.

## Step 5



- Disconnect the Wi-Fi board interconnect cable from the motherboard.
  - ❗ Remove the upper metal case.

---

To reassemble your device, follow these instructions in reverse order.