



Asus MeMO Pad HD 7 GPS Antenna Replacement

Be able to use location services again by replacing the GPS Antenna.

Written By: Julien Daigle



INTRODUCTION

This guide will step you through replacing the GPS Antenna on your Asus Tablet. This process is straight forward and should not be too difficult.



TOOLS:

- [Phillips #000 Screwdriver](#) (1)
- [iFixit Opening Tools](#) (1)
- [Spudger](#) (1)



PARTS:

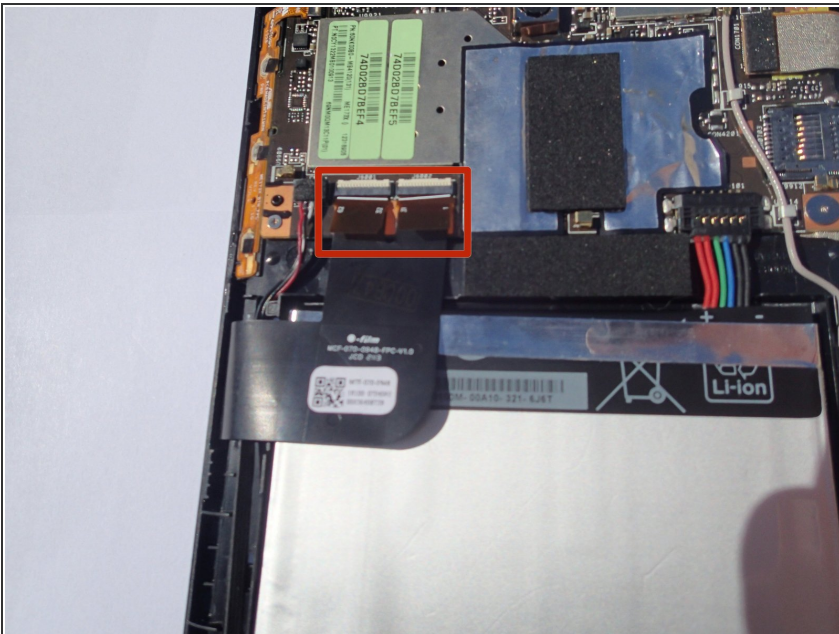
- [ASUS MeMO Pad HD 7 GPS Antenna](#) (1)

Step 1 — Remove Rear Panel



- Carefully remove the back panel by using a plastic opening tool to remove the panel off the device.
- Pull the back panel away from the device.
- ⓘ The volume buttons can fall out of the case. Pay attention so as not to lose them.

Step 2



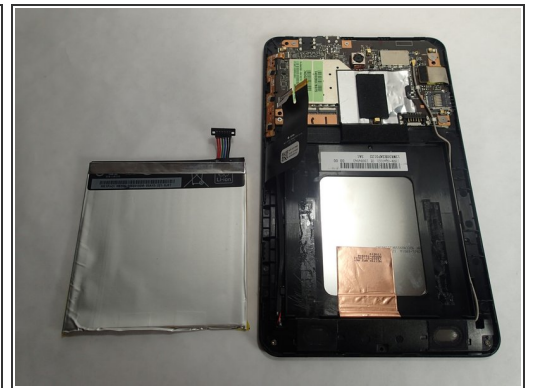
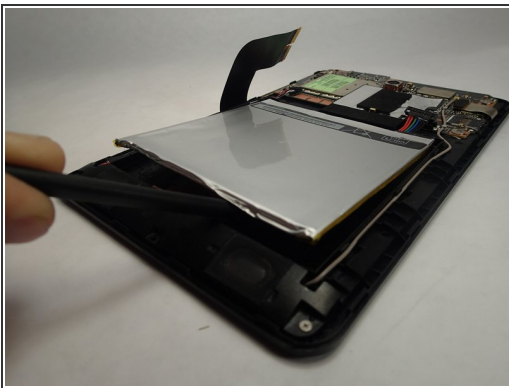
- Unlock the ZIF connectors on the data cables.
- ⓘ Raise the white locking tabs by lifting their upper edge - furthest from the battery - they hinge across the width of the connector.
- Remove the cable from its slot by gently pulling downward on the tabs.
- ★ Check that the touchscreen cables are fully seated when reassembling or touchscreen may have unresponsive areas.

Step 3



- Locate the battery connector by following the wires that come from the top right of the battery. To disconnect the battery just lift up gently on the wires. Use a spudger or blue plastic opening tool to gently lift the wires if it is hard to get a grip.

Step 4 — Remove Battery

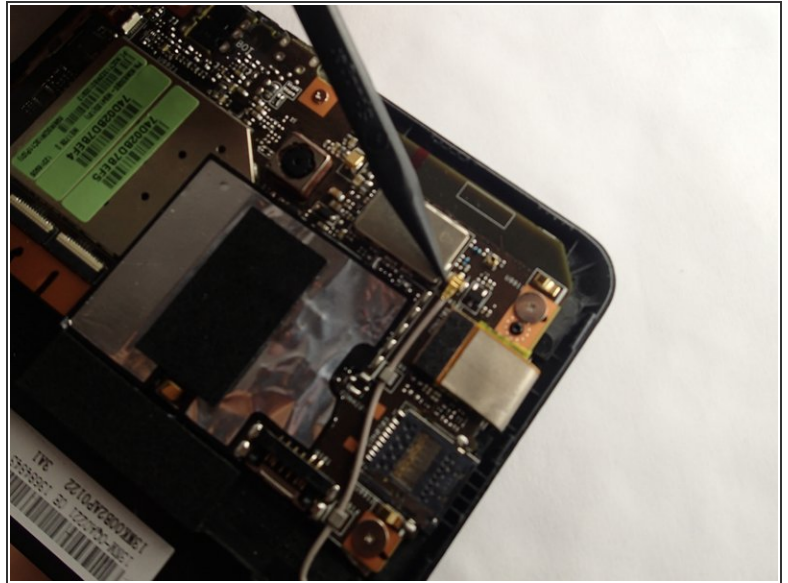


- Using a spudger carefully pry the battery up. It is glued down so slight pressure may be needed.



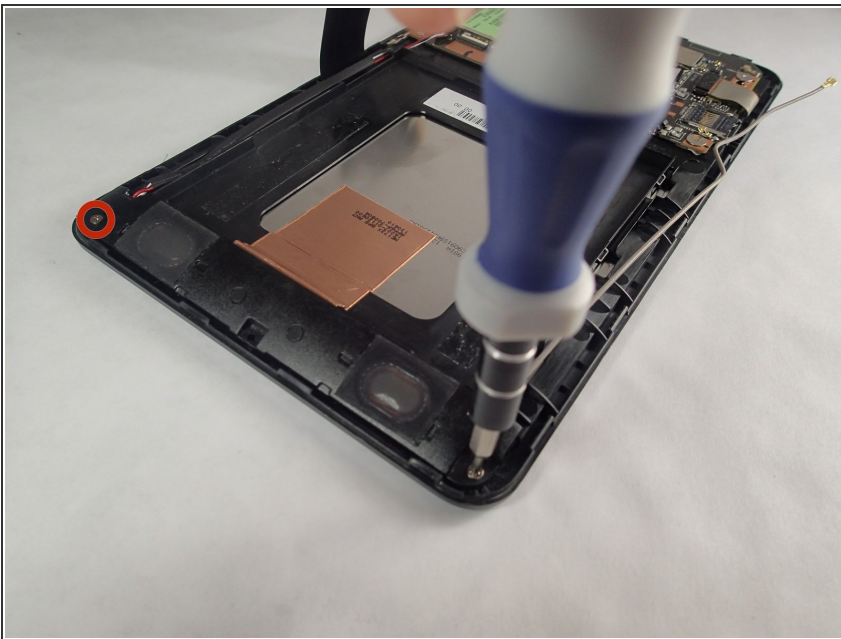
The battery has a soft casing, be careful not to tear the battery casing as chemicals could leak out.

Step 5 — GPS Antennna



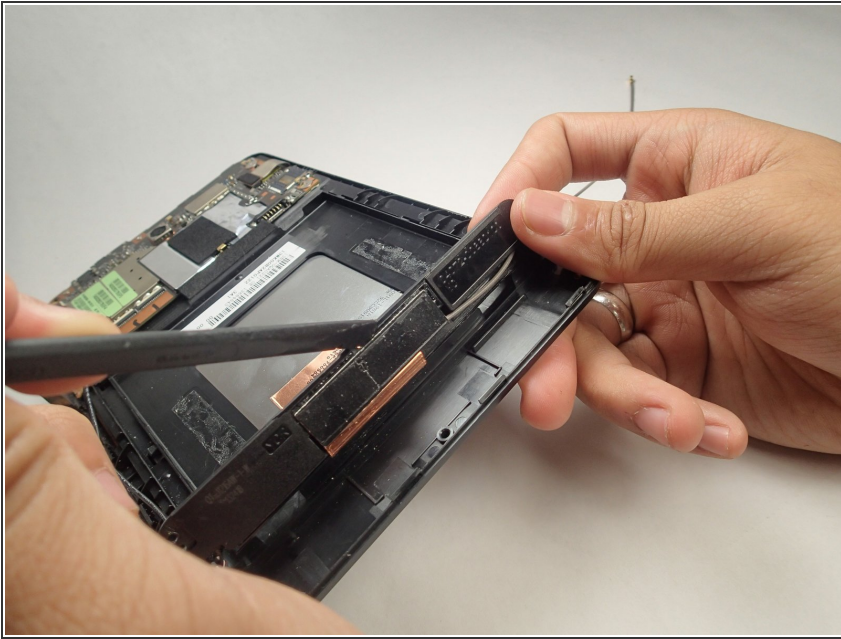
- Pry the GPS Antenna cable straight up using a spudger or similar prying tool. It will be the grey wire that runs up the right side of the device coming from the speaker housing up to the motherboard.

Step 6



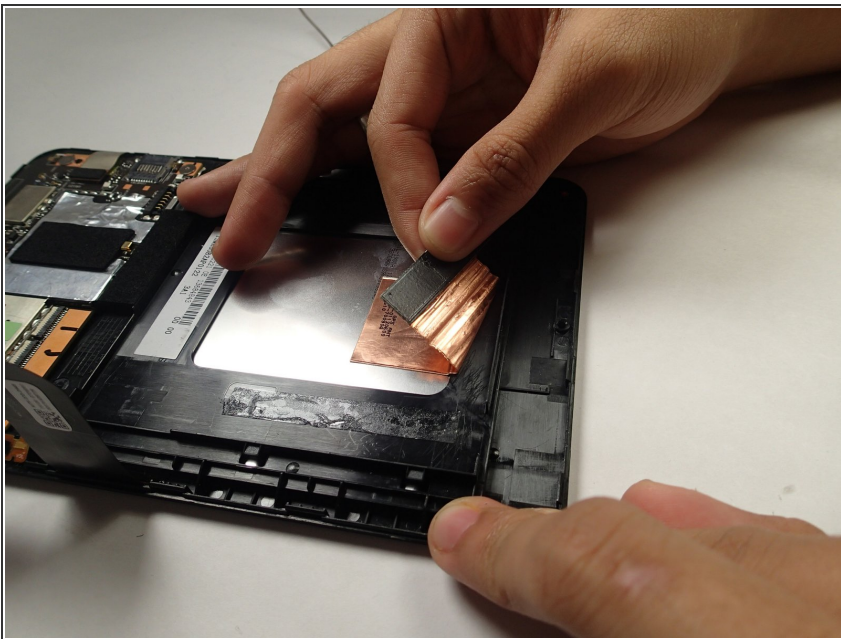
- Unscrew two Philip's #000 2 mm screws located on the left and right side of the speaker housing.

Step 7



- Using a spudger carefully, pry the GPS antenna from the bottom of the speaker housing.

Step 8



- Peel the copper tape holding the GPS Antenna down to the inside of the device using caution not to tear the tape.

To reassemble your device, follow these instructions in reverse order.