



Fujifilm FinePix T500 LCD Screen Replacement

The LCD screen on the Fujifilm FinePix T500 is...

Written By: George Lindner



INTRODUCTION

The LCD screen on the Fujifilm FinePix T500 is a crucial component that facilitates viewing images, configuring settings, and selecting various modes. This guide is designed to assist you in replacing the LCD screen, allowing you to extend the life of your camera without having to purchase a new one.

TOOLS:

Phillips #00 Screwdriver (1)

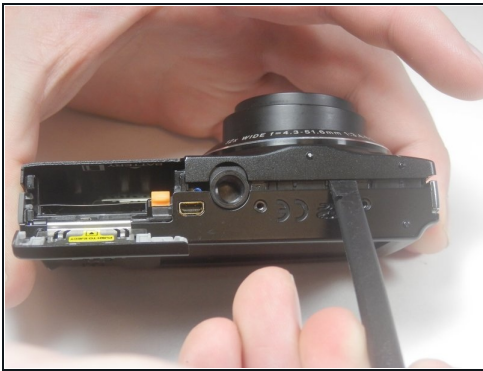
Spudger (1)

Step 1 — LCD Screen



- Unscrew the six 3.5mm Philips head from the outer casing.

Step 2



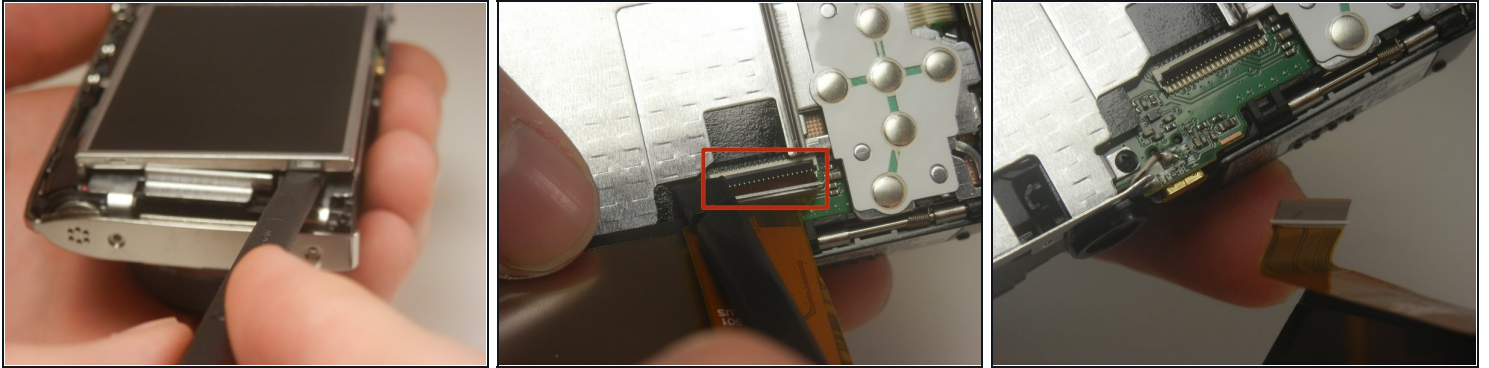
- Open the battery chamber and remove the battery.
- Pry the front half of the casing from the camera.
- Be careful that the sensor cover—the small piece of translucent plastic—doesn't fall out of place. Return it to its original location if it does.

Step 3



- Pry the back half of the casing from the camera.
- ⓘ Be careful when maneuvering the camera without the casing on as the LCD screen is not fastened to anything.

Step 4



- Lift the LCD screen out of the camera.
- There is a tab that keeps in place the ribbon that attaches the screen and motherboard. Lift this up using the spudger and disconnect the screen from the motherboard.

To reassemble your device, follow these instructions in reverse order.