



Dell Inspiron 15-7537 Wireless Card Replacement

This guide will show you how to remove and replace the WiFi card.

Written By: Jean Whitmore



INTRODUCTION

Use this guide to replace your Dell Inspiron 15-7537 WiFi card if you have determined your WiFi connection issues are caused by a faulty WiFi card.



TOOLS:

- [Spudger](#) (1)
 - [Phillips #0 Screwdriver](#) (1)
-

Step 1 — Bottom Case



- Make sure the display is closed. Then, flip the computer over so that you can see the bottom cover.
- Loosen the two 5 mm Phillips #0 on the upper edge of the cover.
- ⓘ These screws will stay captive to the case.

Step 2



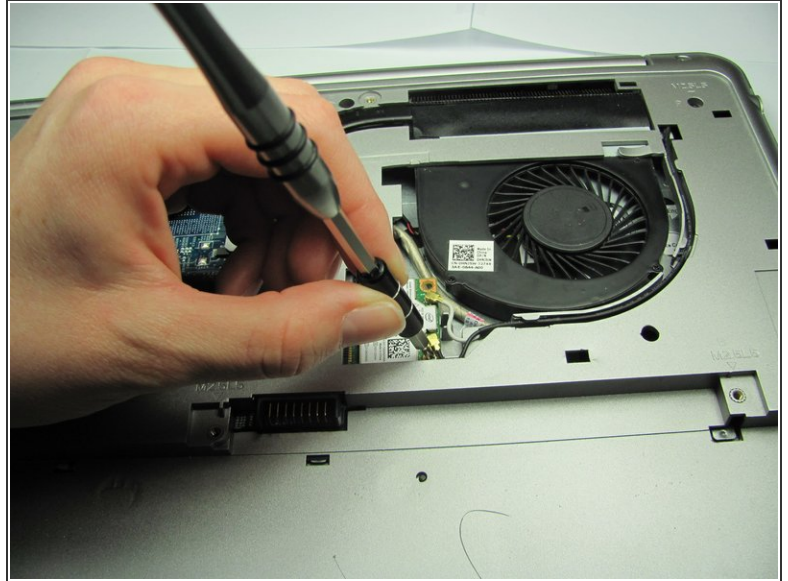
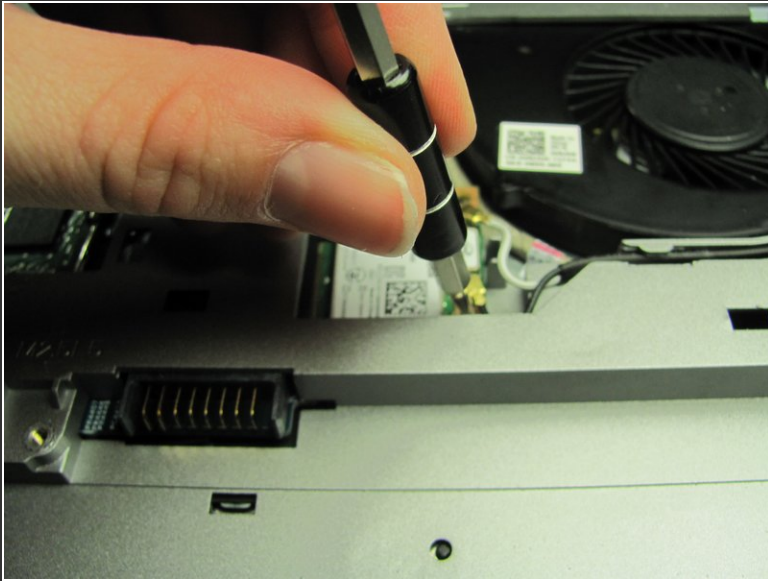
- Remove the two 5 mm interior screws that connect the cover to the assembly using the same Philips head screwdriver from the previous step.

Step 3



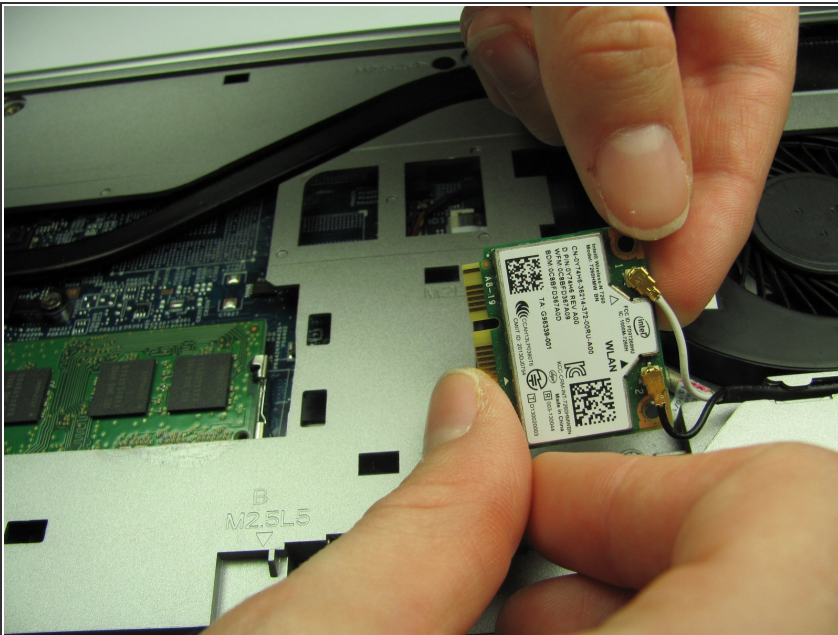
- Use a spudger to remove the base cover from the rest of bottom cover.

Step 4 — Remove the WiFi Card



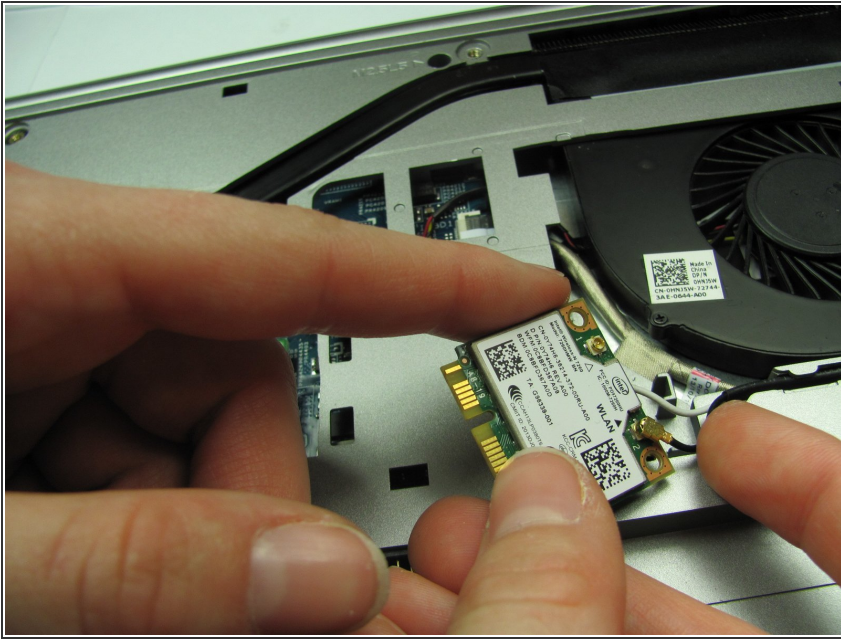
- Completely unscrew the 2 mm screw that connects the WiFi card to the motherboard using a Philips head screwdriver.

Step 5



- Disconnect the two antennas (one black and one white) from the wireless card.

Step 6



- Remove the WiFi card.

i To place a new WiFi card, connect the antenna cables to the WiFi card. The white cable goes to the white triangle, and the black cable goes to the black triangle.

! Avoid damaging the card by not placing any cables underneath the card.