



# Kyocera Event Rear Assembly Replacement

This guide will show you how to remove the back assembly from the body of the Kyocera Event mobile phone.

Written By: Philip



---

## INTRODUCTION

In order to reach the motherboard of the mobile phone, the back assembly needs to be removed.

---



### TOOLS:

- [64 Bit Driver Kit](#) (1)
  - [iFixit Opening Tools](#) (1)
-

## Step 1 — Battery



- Locate the small notch on the bottom right side of the phone.
  - To remove the cover, hook your thumb or fingernail into the slot. Then, gently lift the cover up and off.
- i** The back cover may flex slightly as you remove it. This is normal, but avoid applying excessive force.

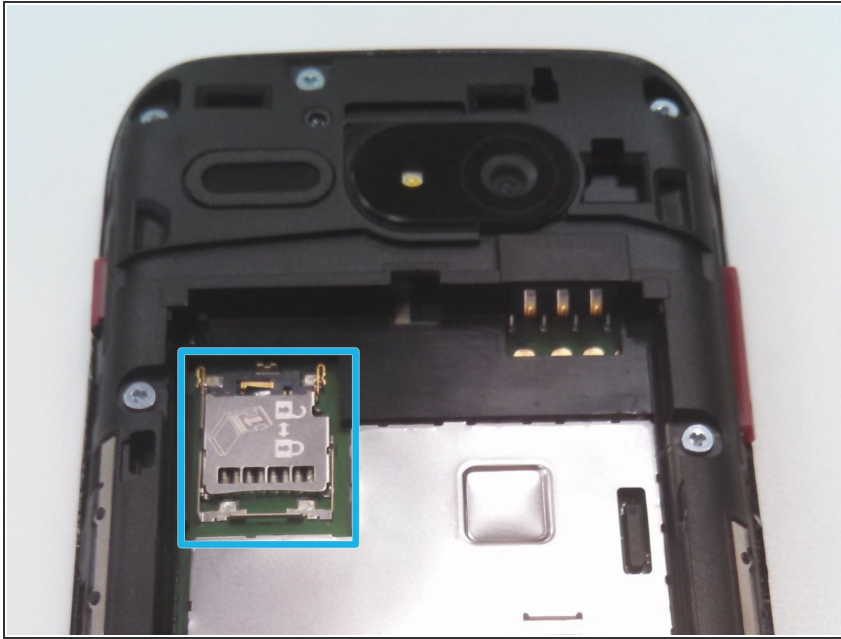
## Step 2



- Locate the small notch below the battery. You may see a white plastic notch sticking out of this space; if so, grasp that tab to pull the battery out of its compartment. If you do not see a white plastic tab, then place your fingernail in the notch and pull upward to release the battery from its compartment.

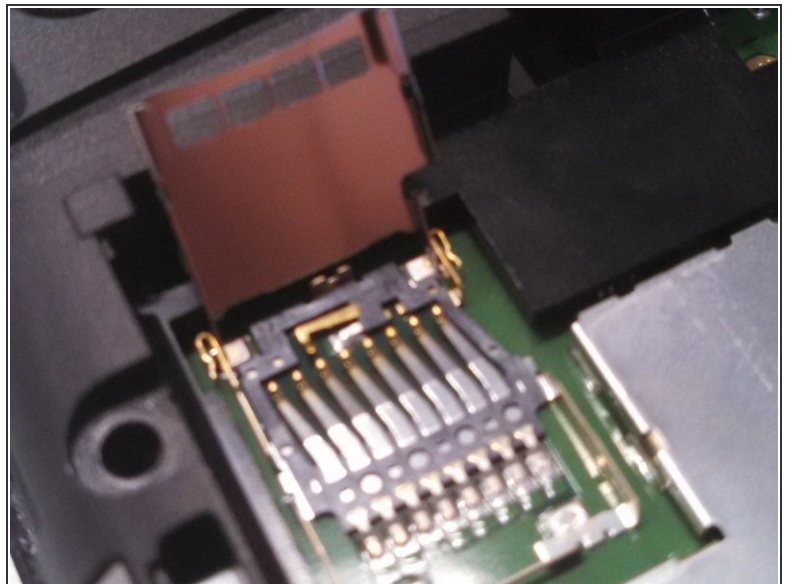
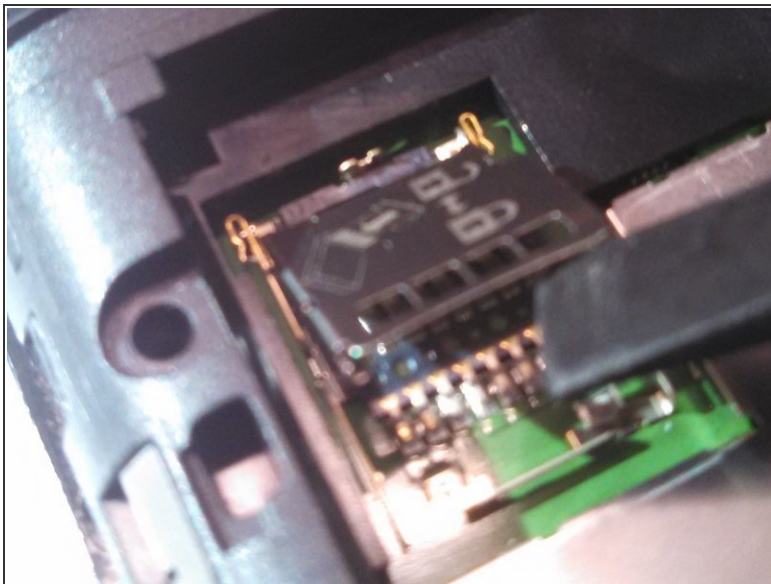
**i** The plastic prying tool can be used to help remove the battery.

### Step 3 — Locate the SIM card



- The SIM card slot can be seen in the middle left of the photograph.

### Step 4 — Open slot and remove card

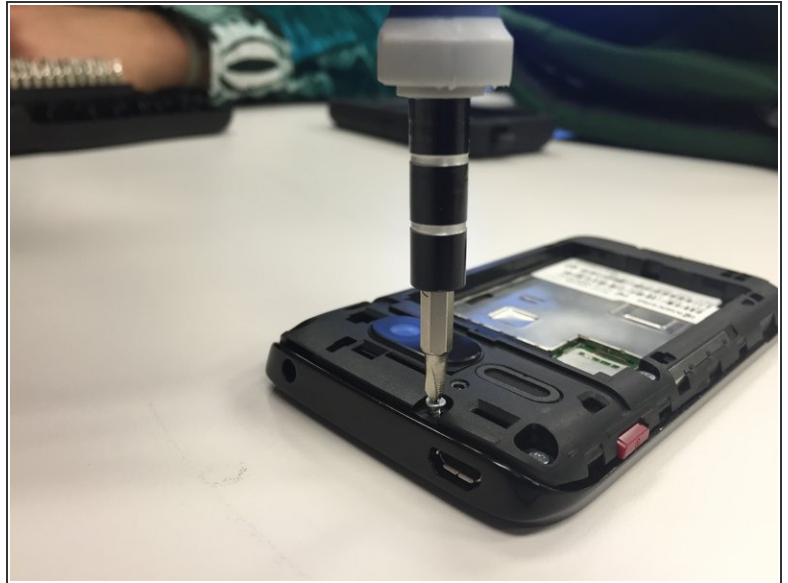


- The SD card slot can be opened and closed, as depicted by the tool.
- The SD card itself slides into and out of the metal cover.

**i** The gold tipped tines are what read the SD card along its bottom.



## Step 5 — Remove the screws.



- Remove seven of the 4.9mm **tri-head** screws. Keep them in a secure location.

## Step 6 — Remove the back assembly



- Pry the back assembly away from the body on all four sides of the phone.
  - Start prying at the top and work around.
  - Remove the buttons for the volume and power-this will allow for easier disassembly.
- i** The back assembly is firmly attached to the body of the phone so removing it will require some force.

To reassemble your device, follow these instructions in reverse order.