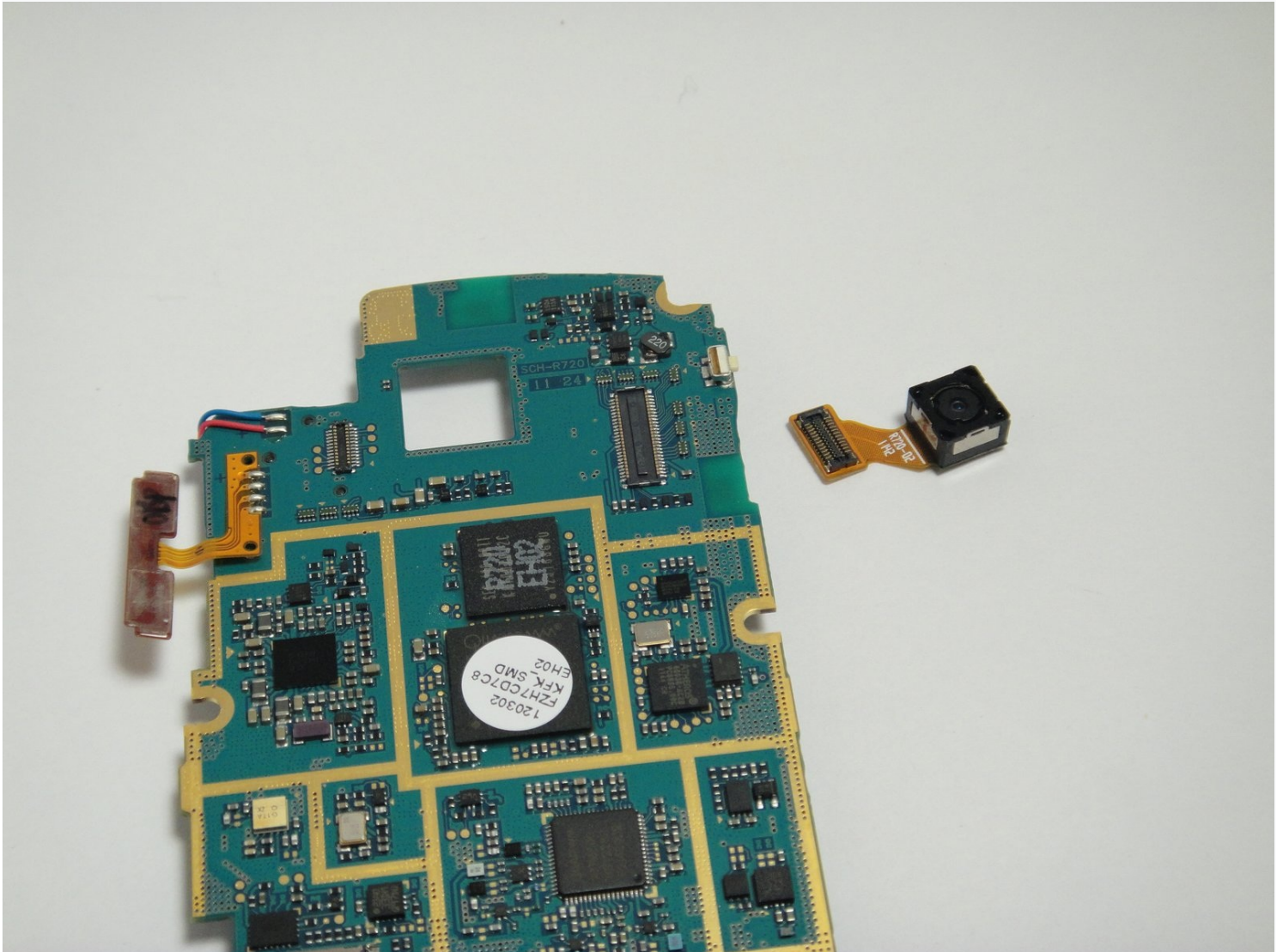




# Samsung Admire Camera Replacement

This guide shows you how to replace the camera...

Written By: Thao Uyen Do



# INTRODUCTION

This guide shows you how to replace the camera on your phone.

---

## TOOLS:

[Phillips #00 Screwdriver](#) (1)

[iFixit Opening Tool](#) (1)

---

## Step 1 — Back Cover



- Use your fingernail or the plastic opening tool under the slit to pull the back cover off.

## Step 2 — Remove the Battery



- Making sure your hands are dry, insert your fingernail beneath the battery and remove it.

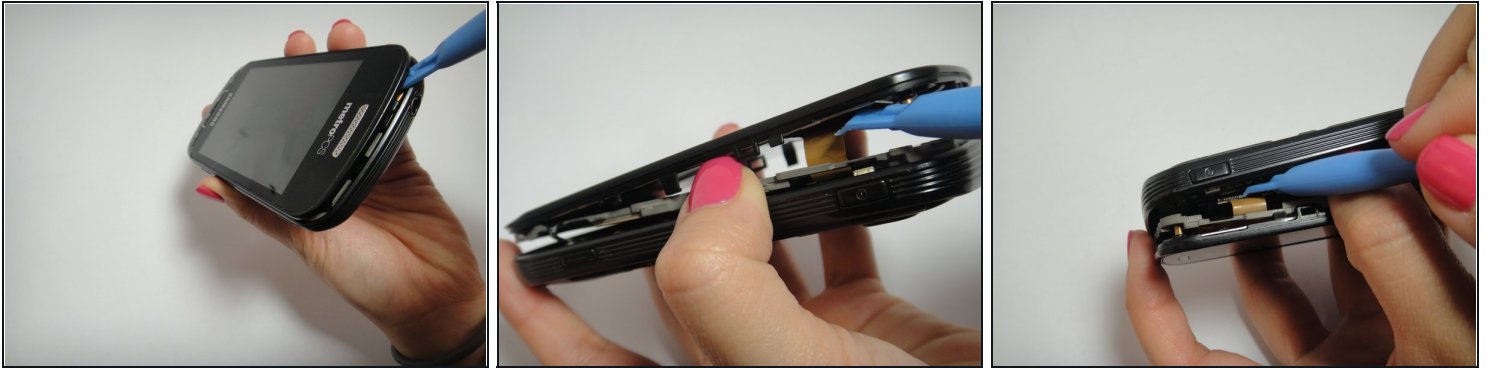
## Step 3 — Remove the screws



- Use a Phillips #00 Precision Screwdriver to remove the six screws in the back of the phone.
- Place the screws on a [magnetic mat](#) to prevent losing them.

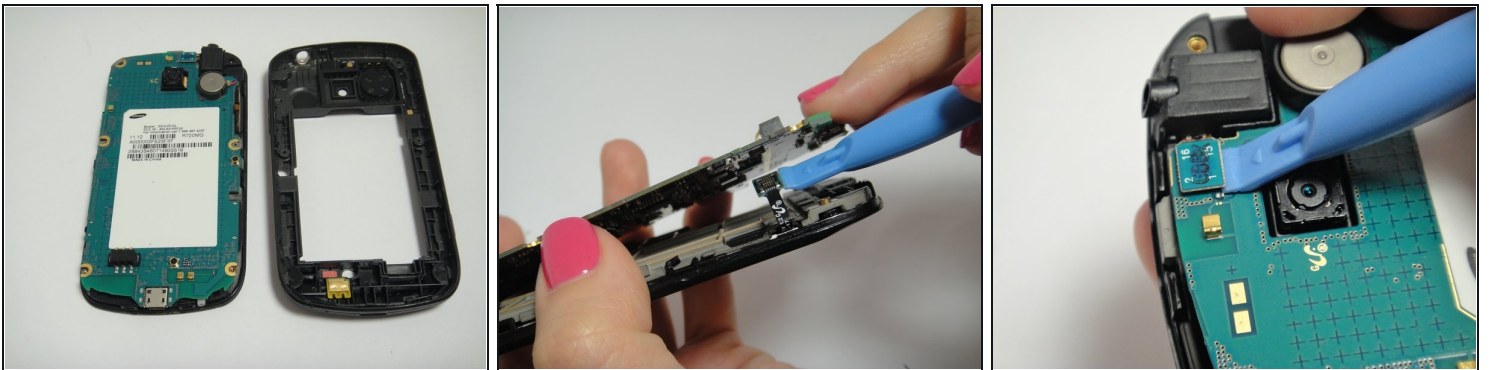


## Step 4 — Inside back Cover



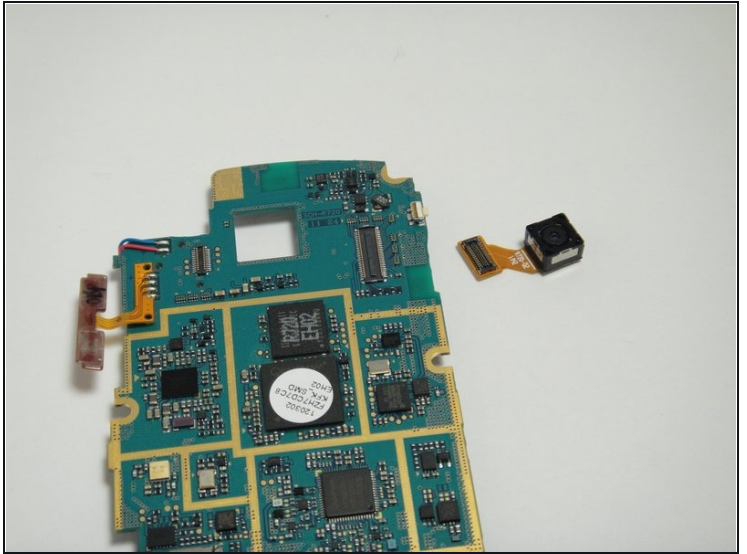
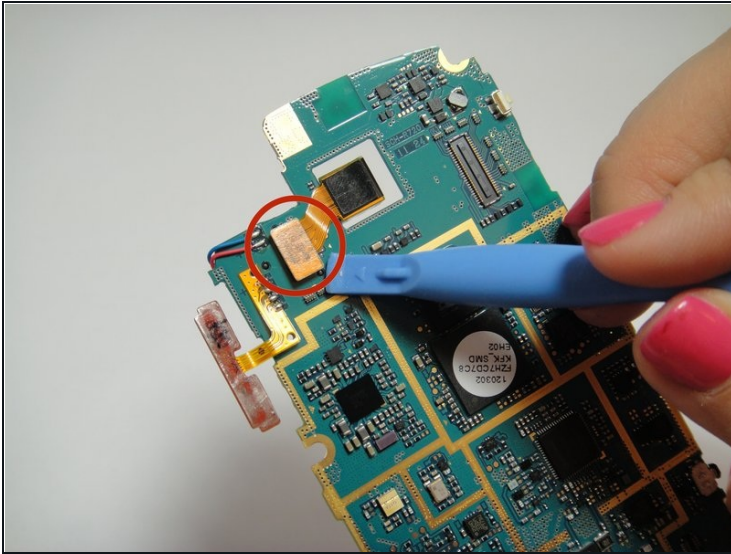
- Place the Plastic Opening tool on the outside rim of the back cover.
- Carefully circle around the rim to open the inside back cover completely.
- Disconnect the ribbon cables and remove the back cover.

## Step 5 — Motherboard



- Carefully disconnect the volume button, the microphone connector, and the screen connector from the motherboard.
- Pull back the side clips and lift the motherboard slowly.

## Step 6 — Camera



- Use the plastic opening tool to disconnect the camera from the phone.
- Connect the new camera into the motherboard.

---

To reassemble your device, follow these instructions in reverse order.