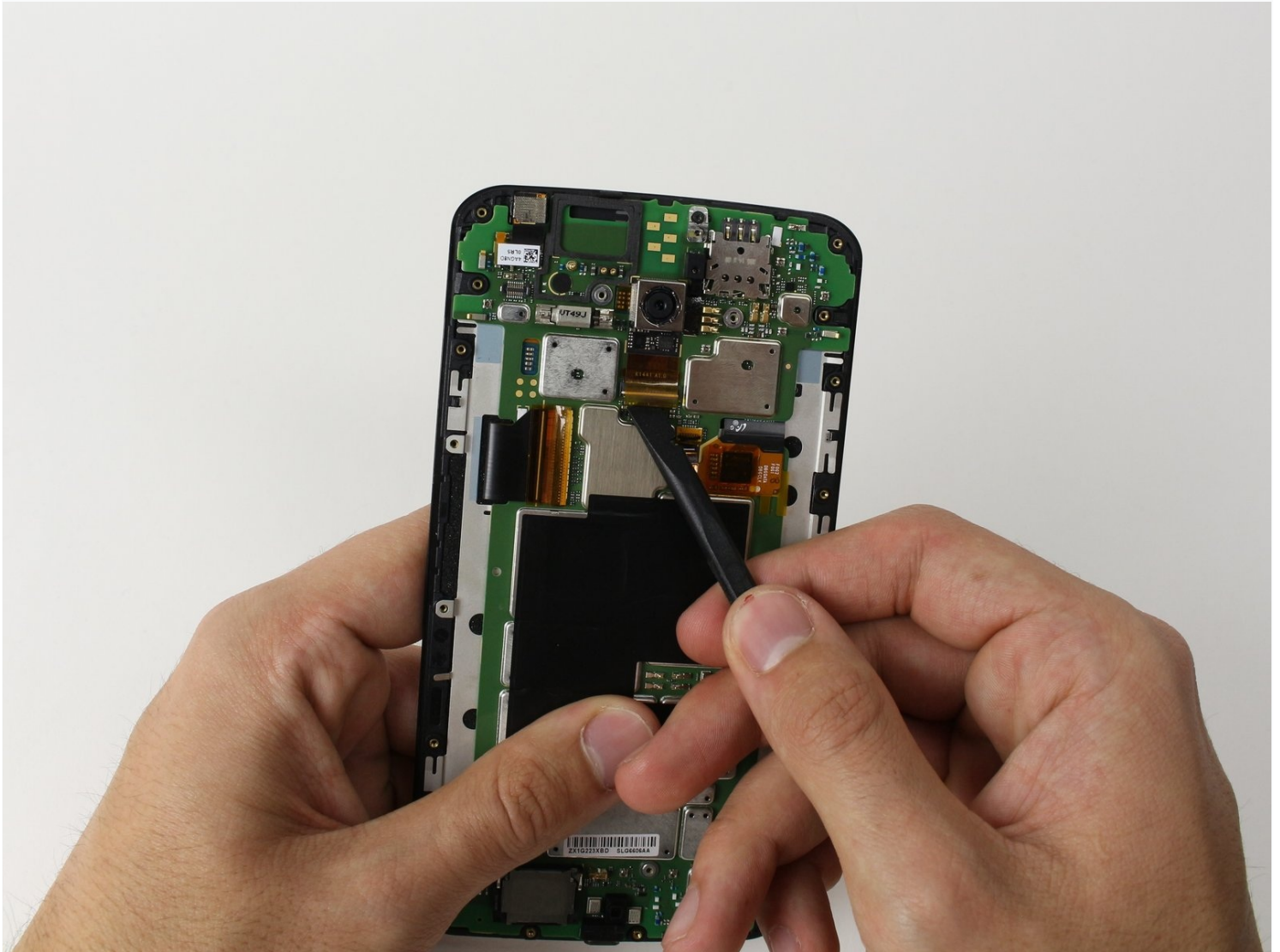




Nexus 6 Rear Facing Camera Replacement

The rear facing camera can be replaced after...

Written By: Marina Moore



INTRODUCTION

The rear facing camera can be replaced after the phone's casing has been separated. Use the [Troubleshooting Guide](#) to make sure this is the correct solution.

TOOLS:

[Paper Clip](#) (1)
[T3 Torx Screwdriver](#) (1)
[Tweezers](#) (1)
[Spudger](#) (1)
[SIM Card Eject Tool](#) (1)
[iFixit Opening Picks \(Set of 6\)](#) (1)

PARTS:

[Nexus 6 Rear Panel](#) (1)
[Nexus 6 Rear Camera](#) (1)

Step 1 — SIM Card



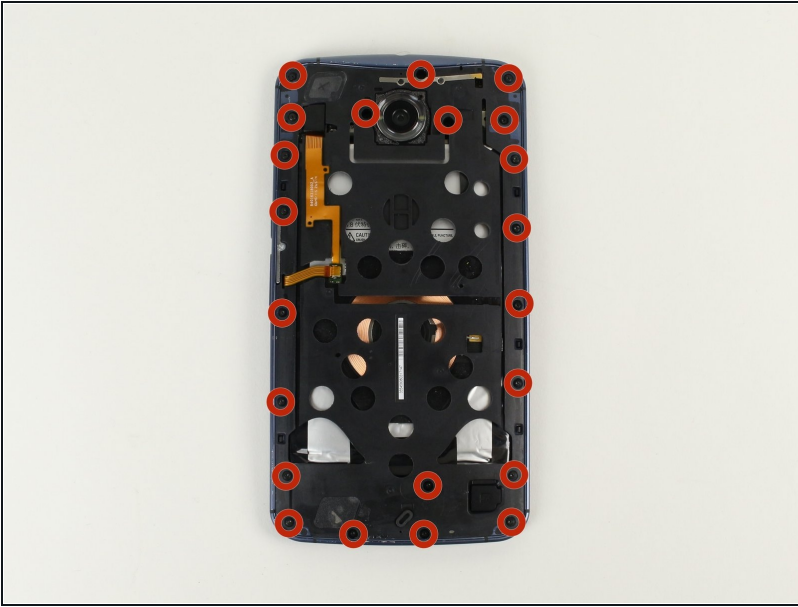
- With a SIM card eject tool (a paperclip will work as well), push down on the hole at the top of the phone until the SIM card holder releases. This should not take much pressure.
- Remove the SIM card and the SIM card holder.

Step 2 — Rear Case



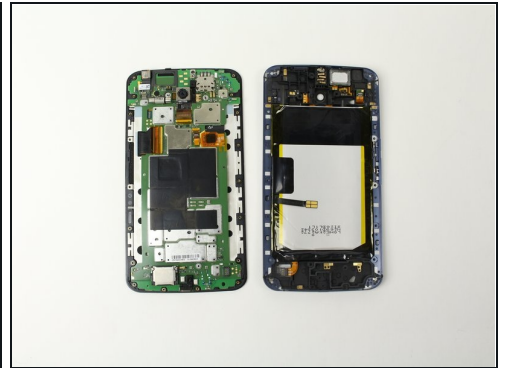
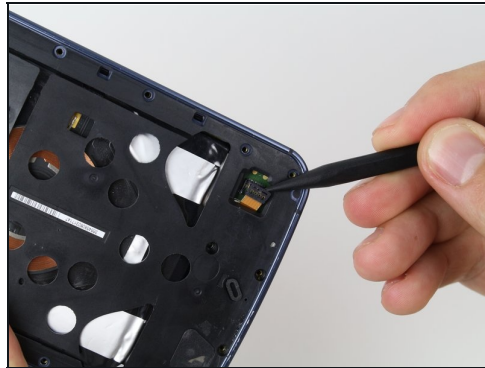
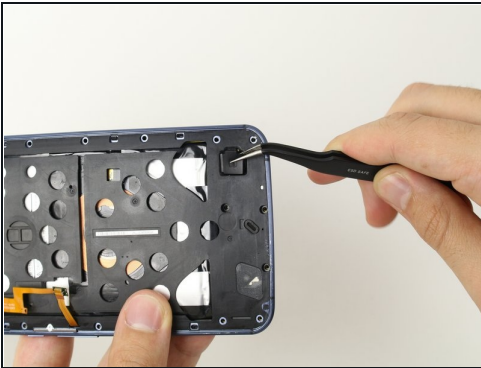
- Lay out a soft cloth on your workspace to prevent scratching the screen in this and future steps.
- Pry open the back casing using the soft plastic opening pick.
 - ⚠ Be careful of the Power & Volume Key ribbon on the left side just next to the volume key. The ribbon is exposed and could be damaged with the opening tool.
- Carefully pull the back casing apart from the rest of the phone with your hands. Because the casing is glued to the rest of the phone, this step may require some force. Don't be alarmed if the casing flexes a bit.
- ① You may need an [iOpener](#) to loosen up the adhesive. Check out the [iOpener Instructions](#) for info on how to use it.

Step 3



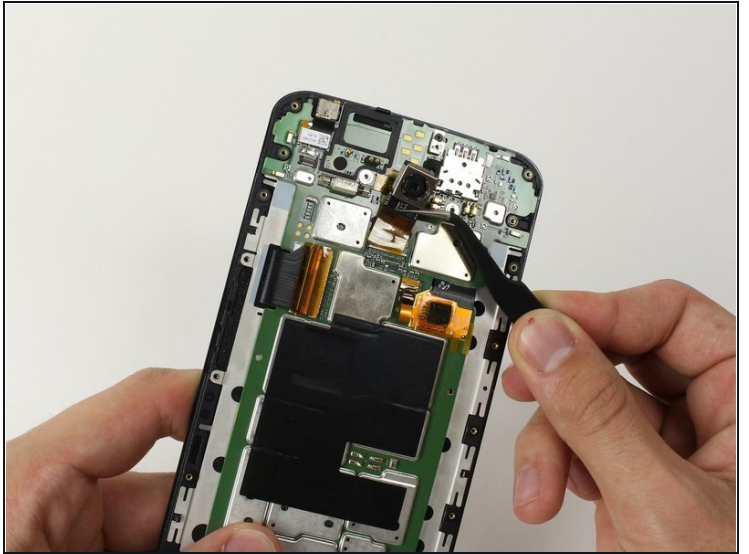
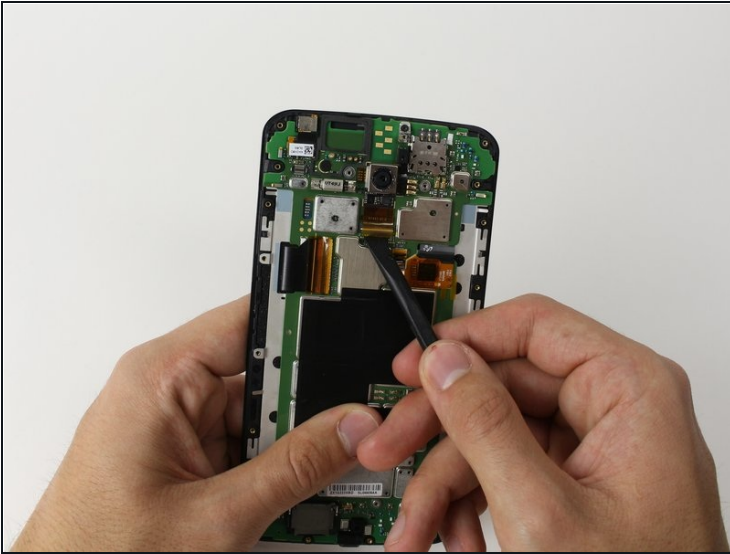
- Remove the twenty-two 2.3 mm T3 Torx screws with the T3 Torx Screwdriver.

Step 4



- With [tweezers](#), remove the rubber protector on the lower part of the phone.
- Disconnect the battery connector by gently prying it straight up with a spudger, on the side opposite the cable.
- Completely separate the battery side from the motherboard side by gently pulling the sides apart with your hands.

Step 5 — Rear Facing Camera



- Use the spudger to release the rear facing camera connector.
 - Use [tweezers](#) to gently remove the rear facing camera.
-

To reassemble your device, follow these instructions in reverse order.