



DJI Phantom H3-2D GoPro Camera Installation

Follow this guide to correctly install a GoPro 3/3+/4 camera onto the H3-2D gimbal.

Written By: David Hoyt



INTRODUCTION

Follow this guide to correctly install a GoPro 3/3+/4 camera onto the H3-2D gimbal on a DJI Phantom.



TOOLS:

- [12mm Socket or Wrench](#) (1)
 - [2 mm Hex Screwdriver](#) (1)
 - [Phillips #0 Screwdriver](#) (1)
-

Step 1 — Open the Battery Compartment



- Press down on battery door release tab to flip the battery door open.

Step 2 — Remove the Battery



- Pull out the battery pack.



Avoid pulling on the battery wires, excess stress may break the wires, damage the power connectors, or crack the internal solder joints.

Step 3 — Disconnect the Battery



- Pull the two halves of the XT60 power connector apart.

⚠ It's a tight fit, so be careful not to hit your drone or yank on the cables when it releases!

Step 4 — Identifying Silver and Black Collets



- Silver-topped propeller collets unscrew counter-clockwise
- Black-topped propeller collets unscrew clockwise

Step 5 — Unscrewing Silver Collets



- **For propellers with silver collets:** Use a 12 mm wrench or socket to loosen silver collets in the **counter-clockwise** direction.
- Once free, unscrew and remove the collet.

Step 6 — Unscrewing Black Collets



- **For propellers with black collets:** Use a 12 mm wrench or socket to loosen black collets in the **clockwise** direction.
- Once free, unscrew and remove the collet.

Step 7 — Remove the Propeller



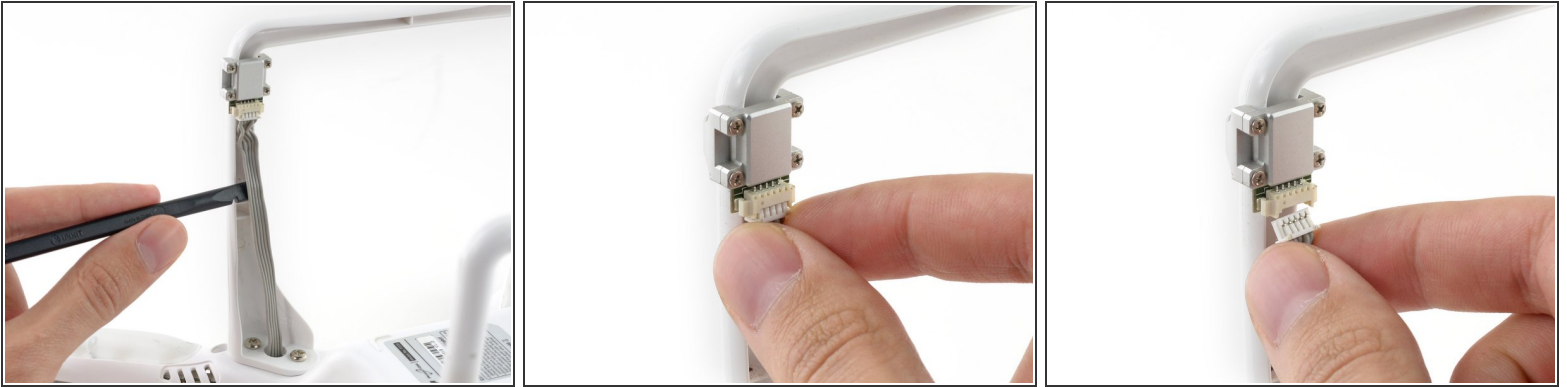
- Gently press down the motor shaft and lift the propeller up to remove it.

Step 8 — Remove Case Screws



- ⓘ After removing all four propellers, flip the drone over.
- Remove the following screws from the underside of the drone:
 - Twelve 2.0 mm hex screws
 - Four Phillips #0 screws

Step 9 — Unplug Magnetometer



- Loosen the cable from the plastic landing gear.
- Unplug the magnetometer molex connector.

Step 10 — Remove the Top Shell



- Lift up on the top portion of the shell and set it on its side.

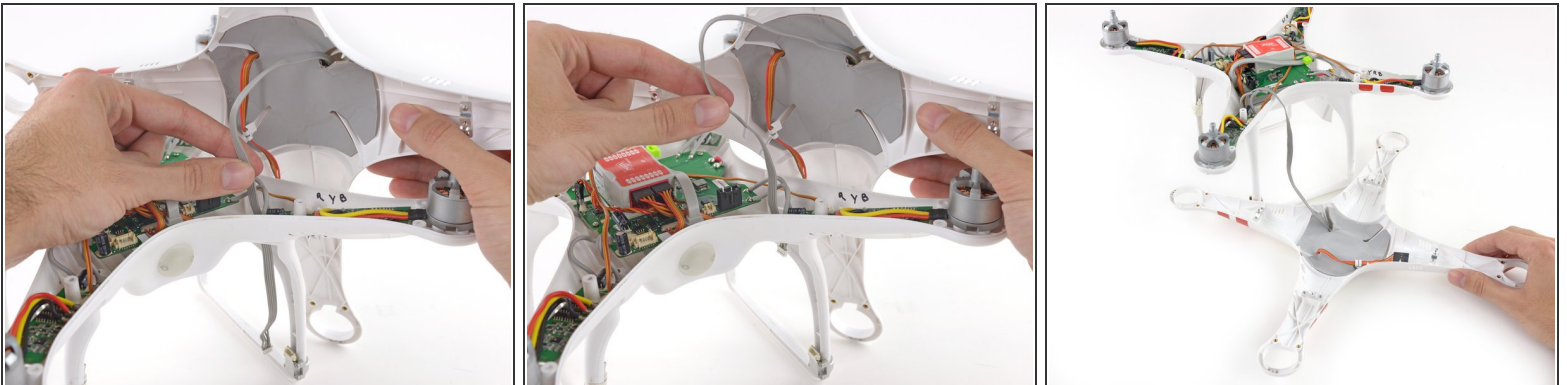
⚠ Do not attempt to fully remove the case. The GPS and Magnetometer cables connect the top shell to the rest of the Phantom, be careful not to stress or break these cables.

Step 11 — Disconnect GPS Cable



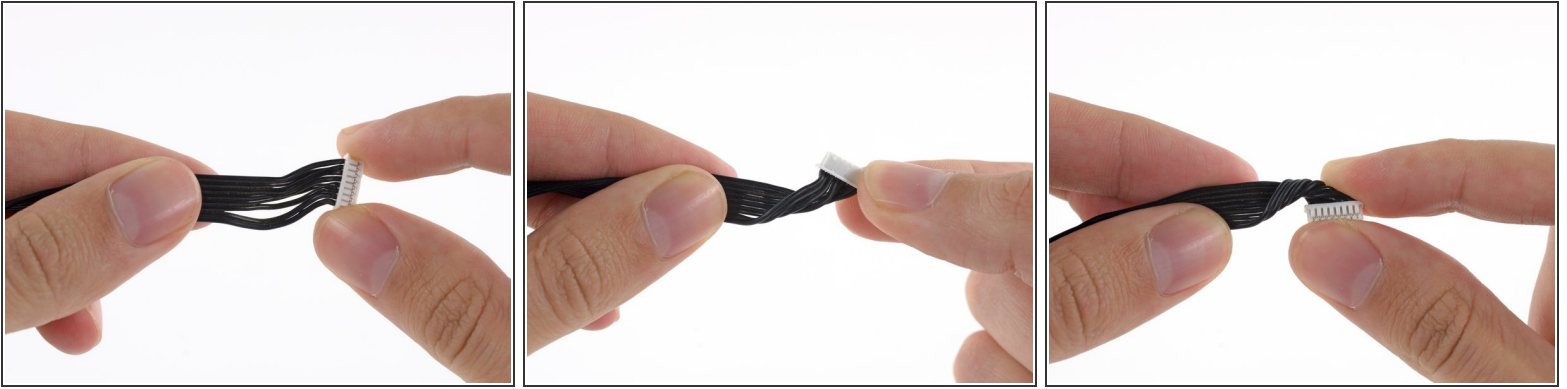
- Lift the GPS cable molex connector up out of its socket on the main board.

Step 12 — Loosen Magnetometer Cable



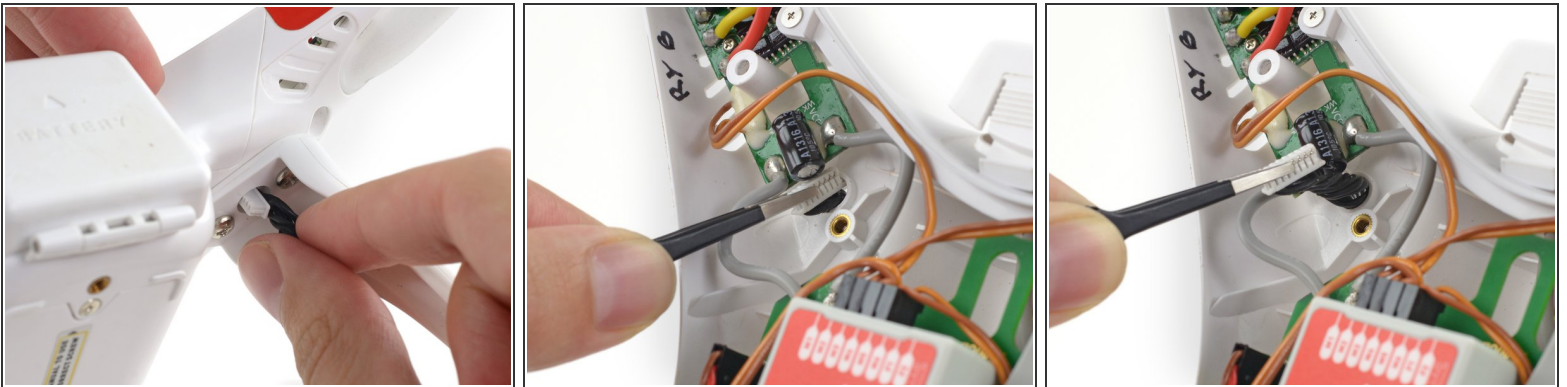
- Gently pull the slack of the magnetometer cable through the case bottom shell.
- The case top shell should now have enough slack to work on the interior of the Phantom.

Step 13 — Prepare G8 Connector Cable



- Twist the molex and cable as shown to prepare it for insertion through the case bottom shell.

Step 14 — Pass the G8 connector through the case



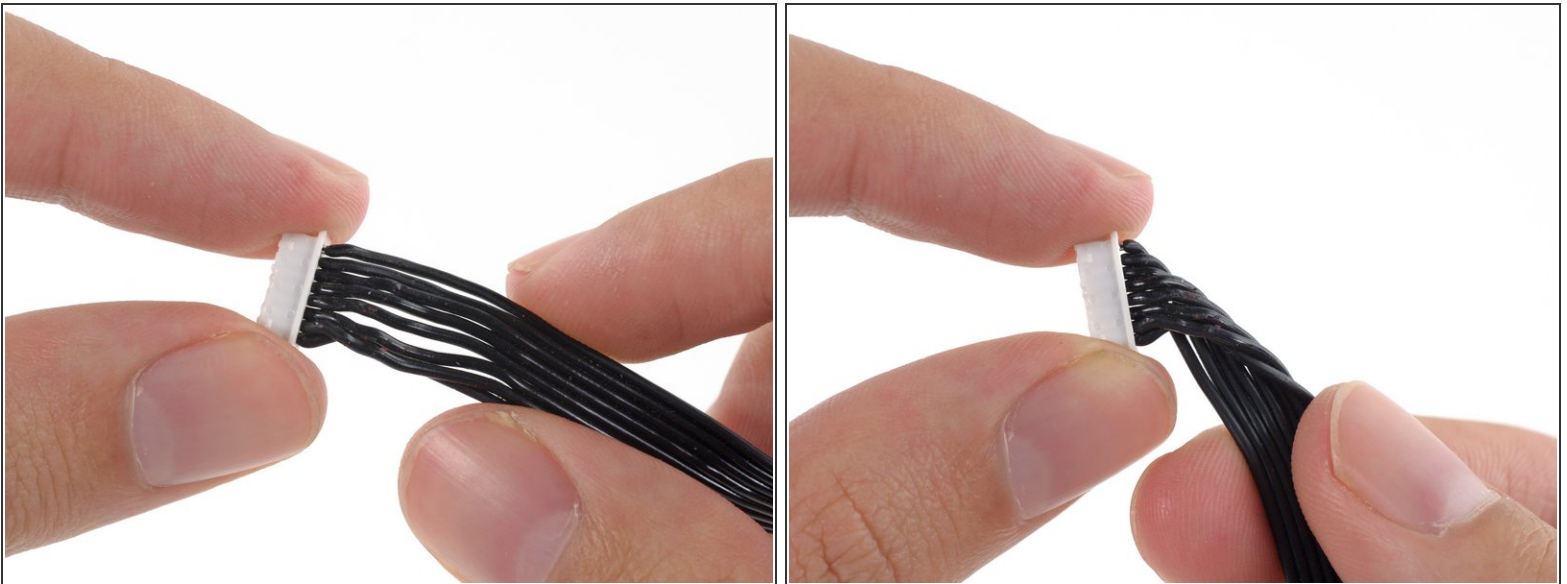
- Insert the molex connector through one of the landing gear holes and case bottom shell.
 - Pull the cable through.
- i** This is a really tight fit, take your time and avoid damaging the molex connector or cable. We found that gently rocking the molex connector back and forth through the hole eventually wiggled it through.

Step 15 — Install the mounting bracket



- Place the H3-2D mounting bracket on the bottom side of the Phantom.
- Line up the mounting holes and screw in the two bolts to secure the mounting bracket.

Step 16 — Prepare the other side of the G8 cable



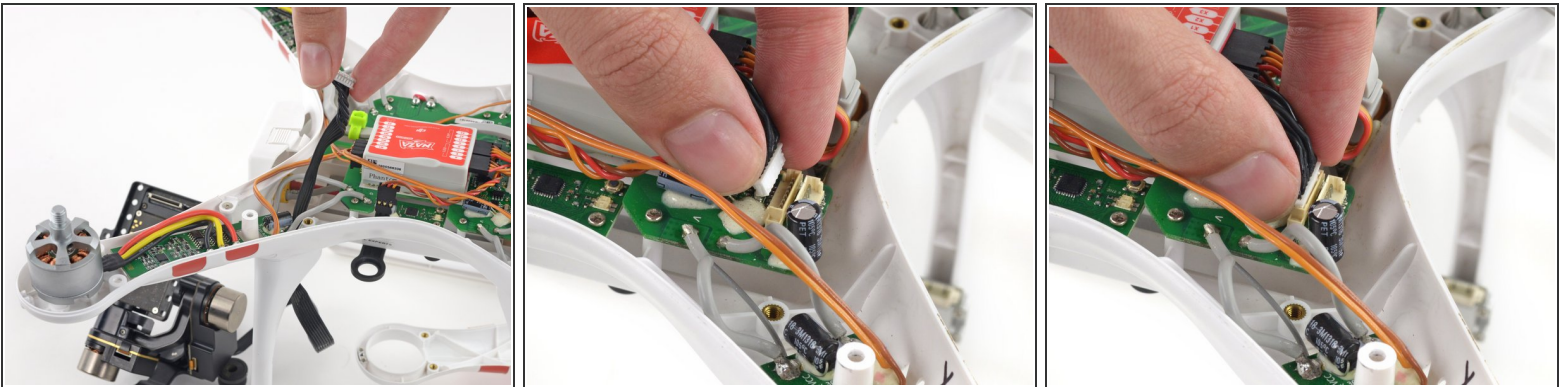
- Twist the other end of the G8 cable mox connector as shown in order to plug in the H3-2D gimbal.

Step 17 — Plugging in the H3-2D gimbal



- Pass the G8 molex connector through the side of the H3-2D gimbal.
- Plug in and firmly secure the connector.

Step 18 — Plug in the G8 connector



- Pull the gimbal wire through the case bottom shell and plug in the connector to the G8 plug on the mainboard.

Step 19 — Prepare the Gimbal for installation



- Place the gimbal on the mount with the front facing the same side as the battery cover.

Step 20 — Mounting the Gimbal



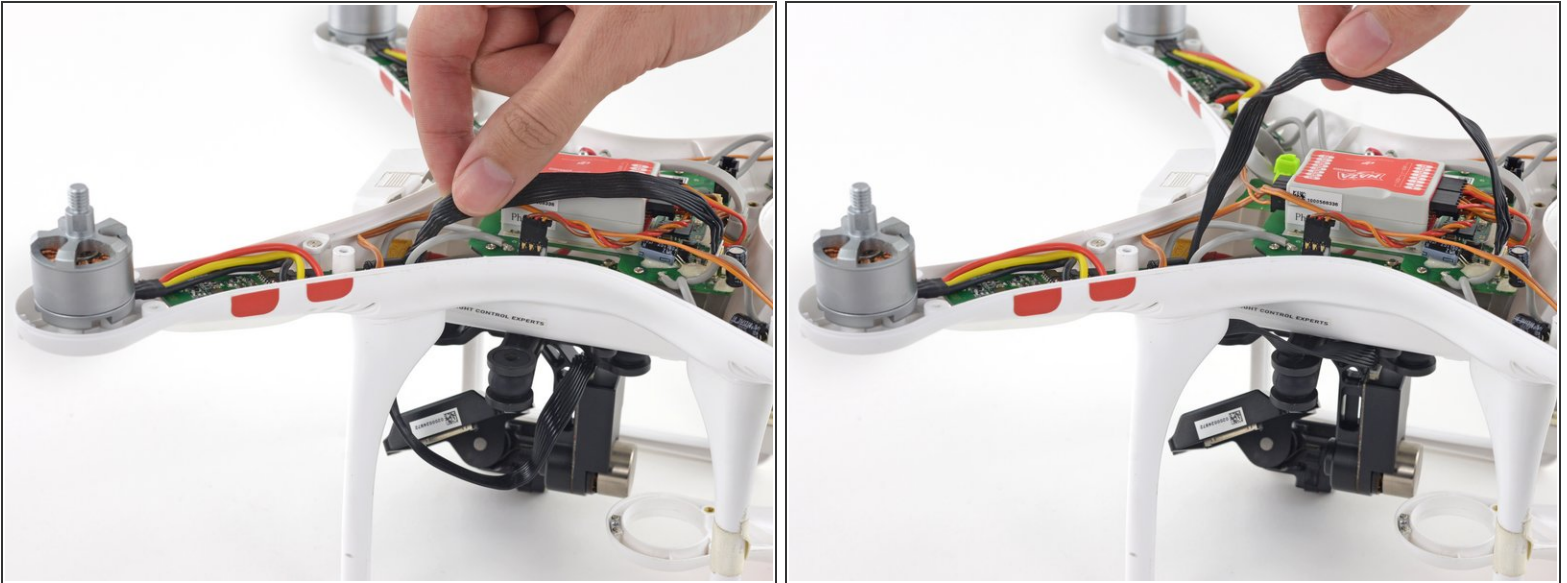
- Mount the four rubber dampers on the gimbal to the mounting bracket.
- Pinch two sides of the rubber dampers and press it into the mounting bracket holes.

Step 21 — Ensure the dampers are installed securely



- Confirm the dampers are installed correctly by twisting them at least 180 degrees.
- ⓘ If a damper unmounts, it was not installed correctly. Repeat the previous step for any unmounted dampers.

Step 22 — Clean up the gimbal cable



- Pull the excess slack in the gimbal cable up into the body of the Phantom.

✦ When reinstalling the case top shell, be careful not to pinch any wires.

Step 23 — Install GoPro



- Line up the GoPro camera with the pins on the gimbal mount.
- Press the GoPro camera firmly against the gimbal and ensure a snug fit.

Step 24 — Install the securing bracket



- Place the securing bracket over the camera and line up the bolt holes.
- Secure the two mounting screws with a Phillips #0 driver.

To reassemble your device, follow these instructions in reverse order.