



# DJI Phantom Case Top Shell Replacement

Use this guide to remove the top case from your DJI Phantom drone.

Written By: David Hoyt



---

## INTRODUCTION

Replacing the top case on your DJI Phantom drone requires removing all four propellers and threading the magnetometer cable through a small hole in the lower case. You may also need to transfer the GPS board to the replacement top case.



### TOOLS:

- [12mm Socket or Wrench](#) (1)
  - [2 mm Hex Screwdriver](#) (1)
  - [Phillips #0 Screwdriver](#) (1)
-

## Step 1 — Open the Battery Compartment




- Press down on battery door release tab to flip the battery door open.

## Step 2 — Remove the Battery



- Pull out the battery pack.

 Avoid pulling on the battery wires, excess stress may break the wires, damage the power connectors, or crack the internal solder joints.

### Step 3 — Disconnect the Battery



- Pull the two halves of the XT60 power connector apart.

⚠ It's a tight fit, so be careful not to hit your drone or yank on the cables when it releases!

### Step 4 — Identifying Silver and Black Collets



- Silver-topped propeller collets unscrew counter-clockwise
- Black-topped propeller collets unscrew clockwise



## Step 5 — Unscrewing Silver Collets



- **For propellers with silver collets:** Use a 12 mm wrench or socket to loosen silver collets in the **counter-clockwise** direction.
- Once free, unscrew and remove the collet.

## Step 6 — Unscrewing Black Collets



- **For propellers with black collets:** Use a 12 mm wrench or socket to loosen black collets in the **clockwise** direction.
- Once free, unscrew and remove the collet.

## Step 7 — Remove the Propeller



- Gently press down the motor shaft and lift the propeller up to remove it.

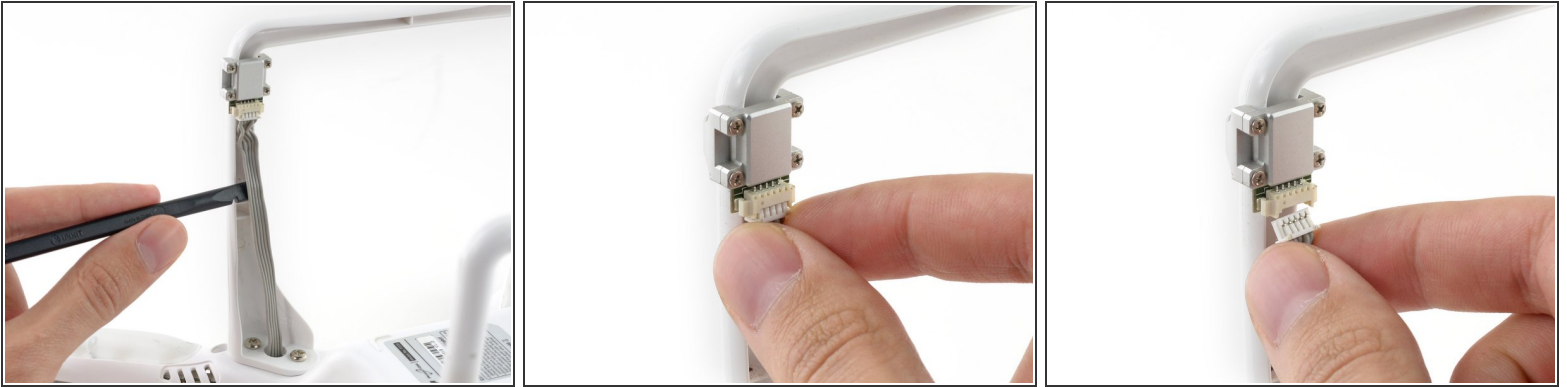
## Step 8 — Remove Case Screws



**i** After removing all four propellers, flip the drone over.

- Remove the following screws from the underside of the drone:
  - Twelve 2.0 mm hex screws
  - Four Phillips #0 screws

## Step 9 — Unplug Magnetometer



- Loosen the cable from the plastic landing gear.
- Unplug the magnetometer molex connector.

## Step 10 — Remove the Top Shell



- Lift up on the top portion of the shell and set it on its side.

**⚠ Do not** attempt to fully remove the case. The GPS and Magnetometer cables connect the top shell to the rest of the Phantom, be careful not to stress or break these cables.

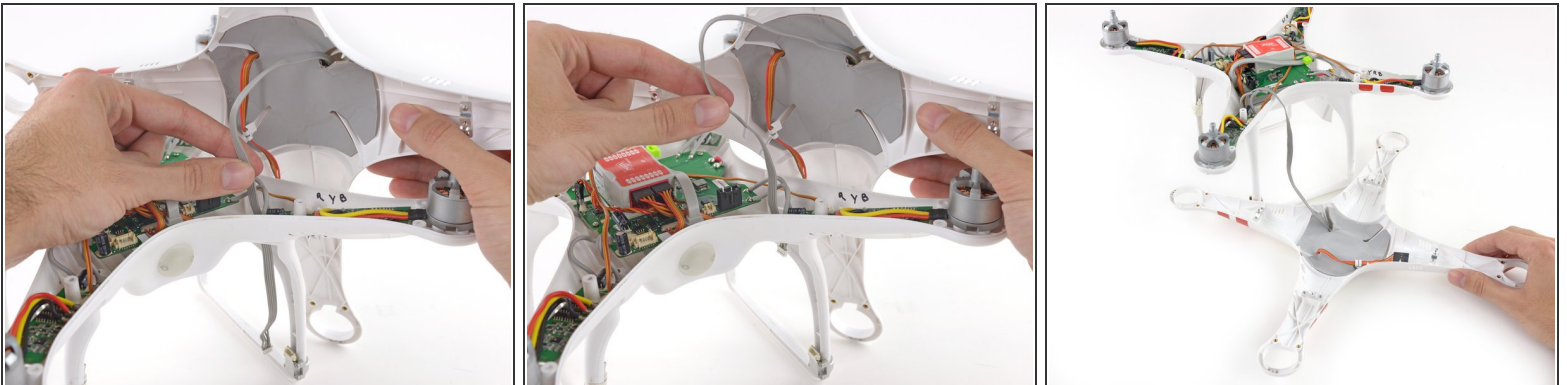


## Step 11 — Disconnect GPS Cable



- Lift the GPS cable molex connector up out of its socket on the main board.

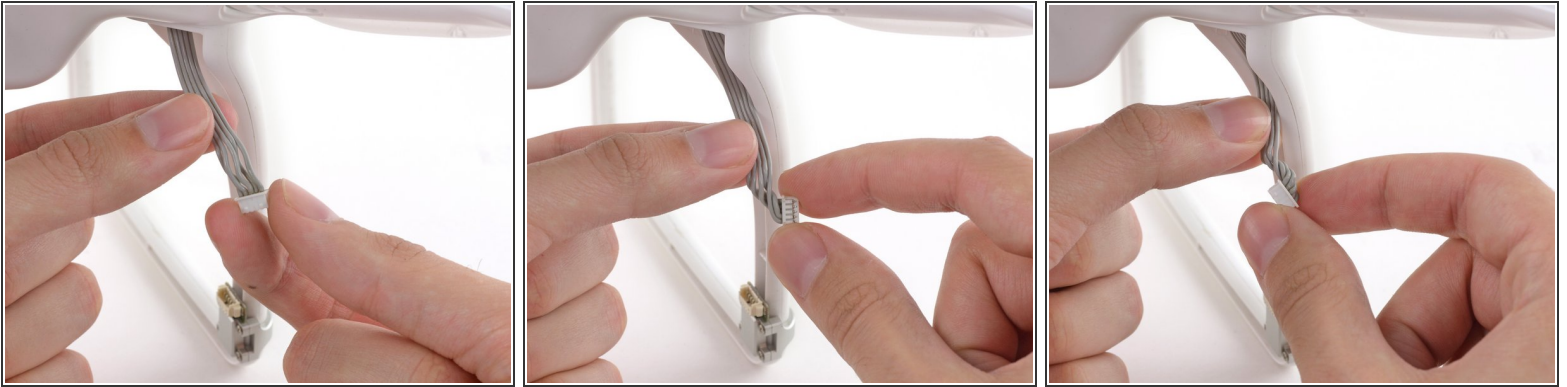
## Step 12 — Loosen Magnetometer Cable



- Gently pull the slack of the magnetometer cable through the case bottom shell.
- The case top shell should now have enough slack to work on the interior of the Phantom.

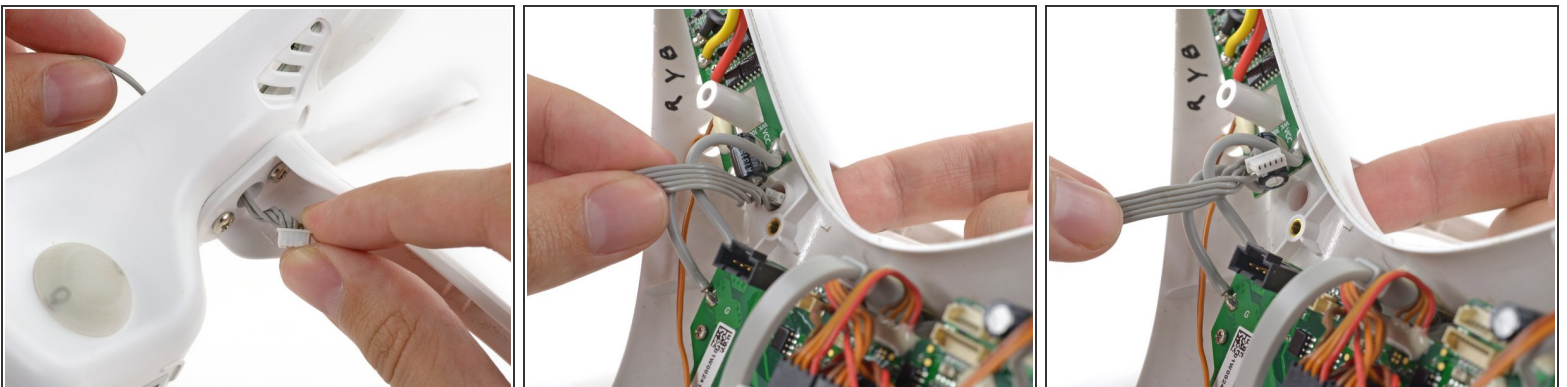


### Step 13 — Twisting the Magnetometer Cable



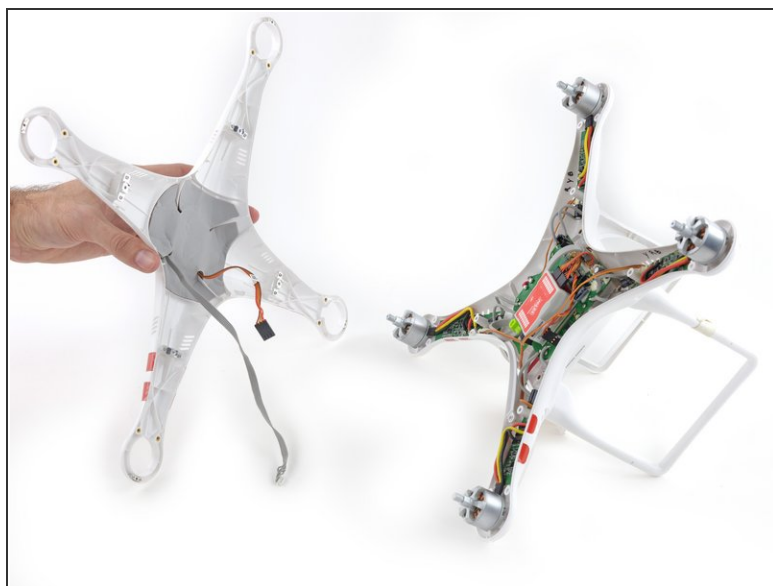
- Twist the magnetometer cable as shown to prepare for passing it through the case bottom shell.

### Step 14 — Passing Through the Magnetometer Cable



- Gently push the twisted magnetometer cable and molex connector through the hole in the case bottom shell.

## Step 15 — Remove the Case Top Shell



- Remove the case top shell from the bottom shell.
- If your new case top shell did not come with a GPS module, you may need to transfer the old one. To do so, gently peel off the large, gray adhesive label and transfer it to the new shell.

To reassemble your device, follow these instructions in reverse order.