



Nintendo DSi XL Upper Screen Replacement

Replacing DSi XL Upper Screen

Written By: Brett Hartt



INTRODUCTION

Get a better view of whats going on in your games by replacing a scratched upper screen. This is not the touchscreen.



TOOLS:

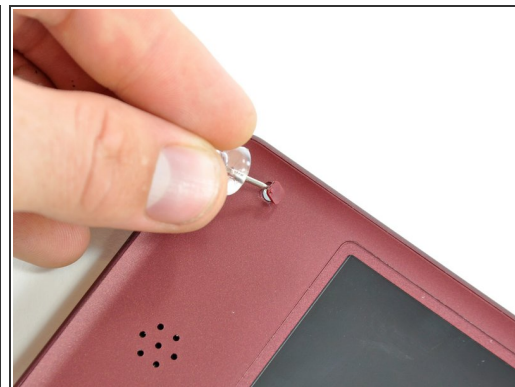
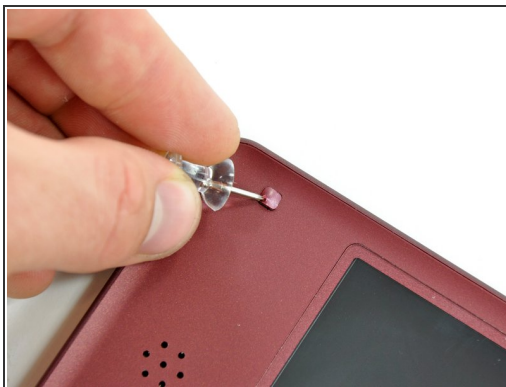
- [Phillips #00 Screwdriver](#) (1)
- [Spudger](#) (1)



PARTS:

- [Nintendo DSi XL Upper Screen](#) (1)

Step 1 — Rear Bezel



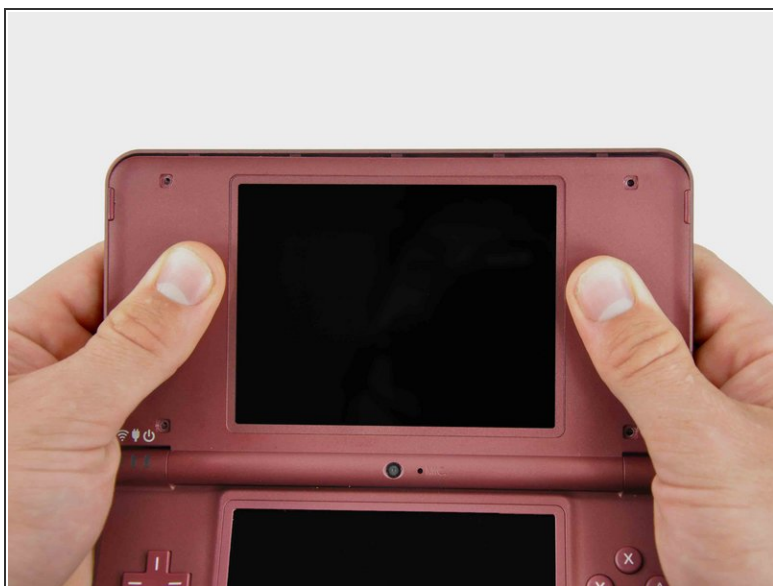
- Use a push pin to remove the four plastic screw covers on the front bezel.

Step 2



- Remove four Phillips screws securing the front bezel to the rear bezel.

Step 3



- Using two hands, gently slide the rear bezel upwards.
- ⓘ The rear bezel will move only about 2 mm.

Step 4



- Insert a spudger into the gap between the front and rear bezel
- Rotate the spudger away from the DSi XL, prying the two bezels apart.

Step 5



- In the same manner as described above, continue prying along the top edge of the front and rear bezels.

Step 6



- Separate the rear bezel from the front bezel.
- ⚠ Do not attempt to completely remove the rear bezel yet. It is still attached to the front bezel by the rear-facing camera.

Step 7



- Use the flat end of a spudger to pry the rear camera off the rear bezel.
- Remove the rear bezel.

Step 8 — Upper Screen



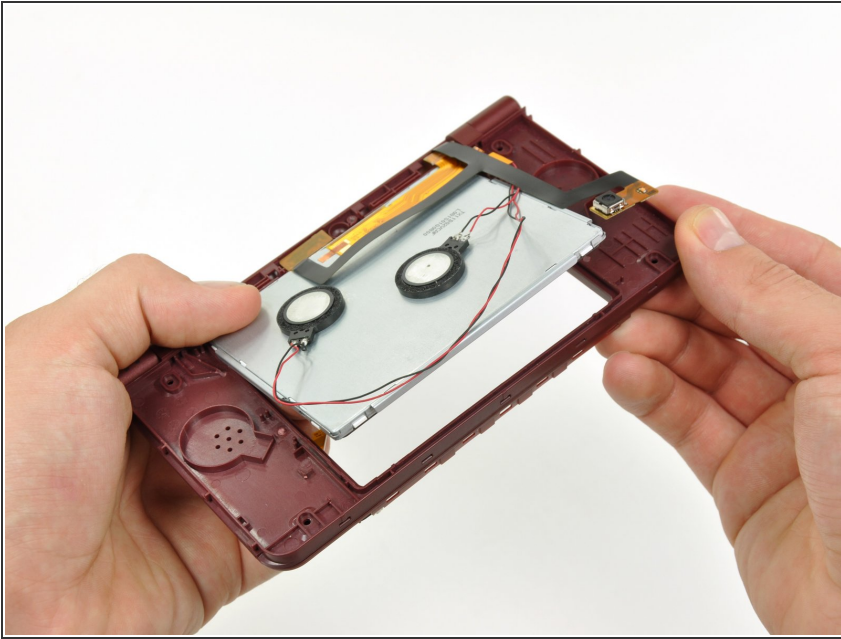
- Using the flat end of a spudger, pry the Wi-Fi antenna out of its housing from within the front bezel and move it aside.

Step 9



- Using the flat end of a spudger, pry the left speaker out of its socket on the front bezel.
 - De-route the speaker cable along the top edge of the screen.
- ⚠ Work carefully and slowly, holding onto the wire and not the speaker itself. The solder joints may break if pulled on too hard.
- In the same manner as described above, remove the right speaker from its socket on the front bezel.
 - Place both speakers on the back of the upper LCD.

Step 10



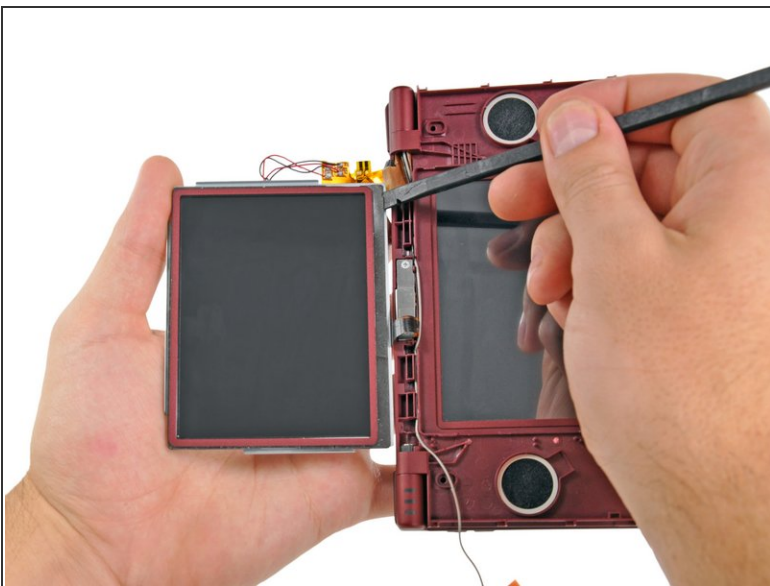
i Open the DSi XL.

- Carefully push the upper display assembly through its housing in the front bezel.

! The upper display assembly is held in place via adhesive to the front bezel. Push firmly, being careful not to break the upper LCD.

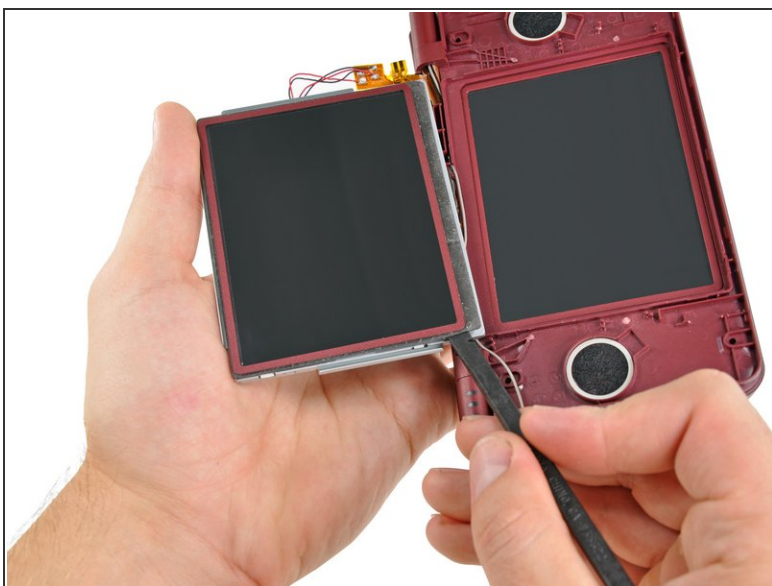
- Rotate the upper display assembly out of the front bezel.

Step 11



- Insert the flat end of a spudger underneath the adhesive strip that secures the front screen to the upper LCD.
- Slide the spudger along the bottom side of the upper LCD, freeing the adhesive along that edge.

Step 12



- In the same manner as previously described, detach the adhesive along the left edge of the upper LCD.

Step 13



- In the same manner as previously described, detach the adhesive along the right side of the upper LCD.

Step 14



- Carefully lift the upper screen from the bottom edge.
- Pull the upper screen away from the upper LCD.

To reassemble your device, follow these instructions in reverse order.