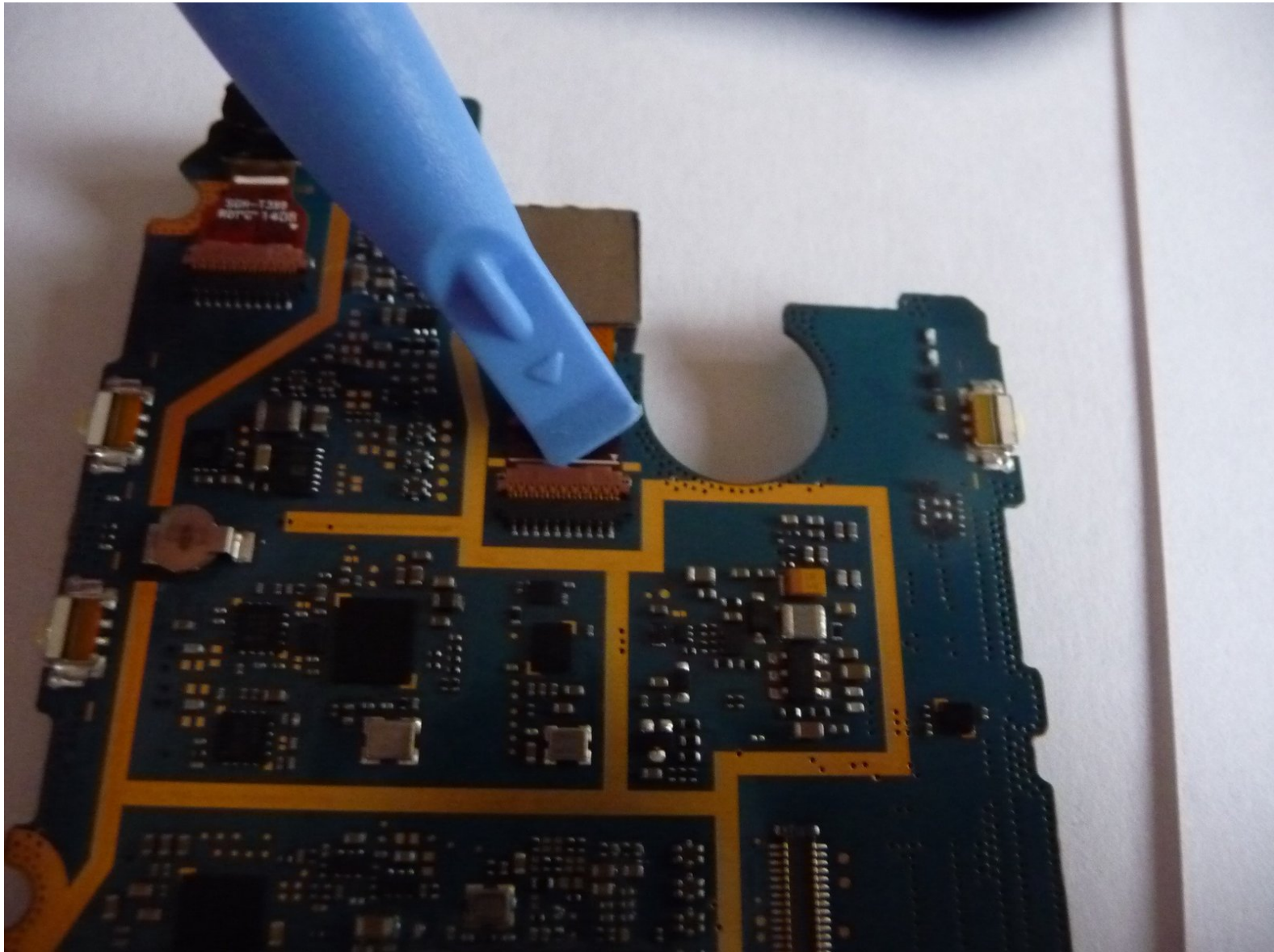




# Samsung Galaxy Light Rear Facing Camera Replacement

Replace the rear facing camera.

Written By: Geoff Wacker



---

## INTRODUCTION

Use this guide to replace the rear facing camera on your Samsung Galaxy Light.




### TOOLS:

- [iFixit Opening Tools](#) (1)
  - [Phillips #0 Screwdriver](#) (1)
-

## Step 1 — Remove Back Cover



 Before removing the back cover, make sure the Samsung Galaxy Light is completely off.

- Using a plastic opening tool (or your fingernails), pry up the back cover of the device.
- Remove the back cover.

## Step 2 — Remove Battery



- Remove the battery from the device.



### Step 3 — Unscrew Midframe



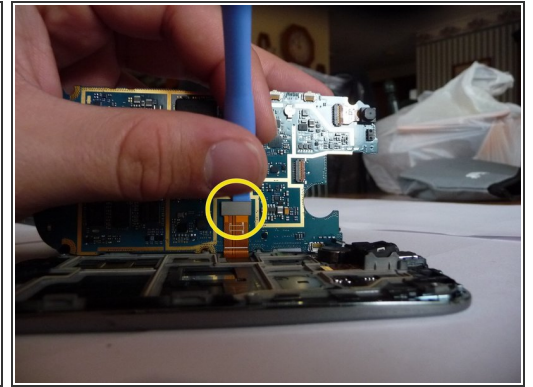
- Using a Phillips #0 screwdriver, remove all nine (9) screws attaching the midframe to the front of the device.

### Step 4 — Remove Midframe



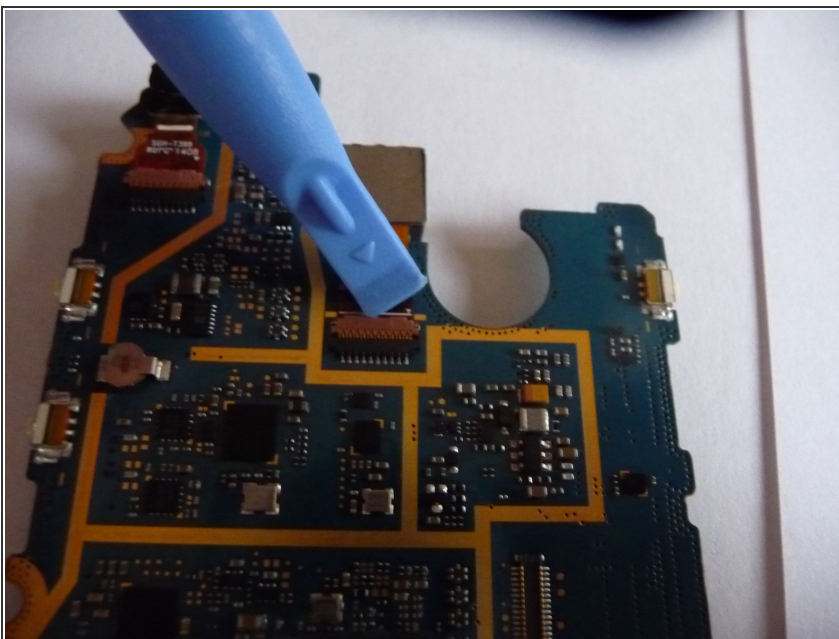
- Using the plastic opening tool, separate the midframe from the front panel of the device.
- Remove the midframe.

## Step 5 — Detach Motherboard



- To detach the motherboard from the device:
  - Using the plastic opening tool, carefully pry up the digitizer connector from the motherboard.
  - Carefully lift the motherboard up and move it toward the left side of the device.
  - Using the plastic opening tool, carefully pry up the display connector on the back side of the motherboard.

## Step 6 — Rear Facing Camera



- Use a plastic opening tool to disconnect the rear facing camera from the motherboard.

To reassemble your device, follow these instructions in reverse order.