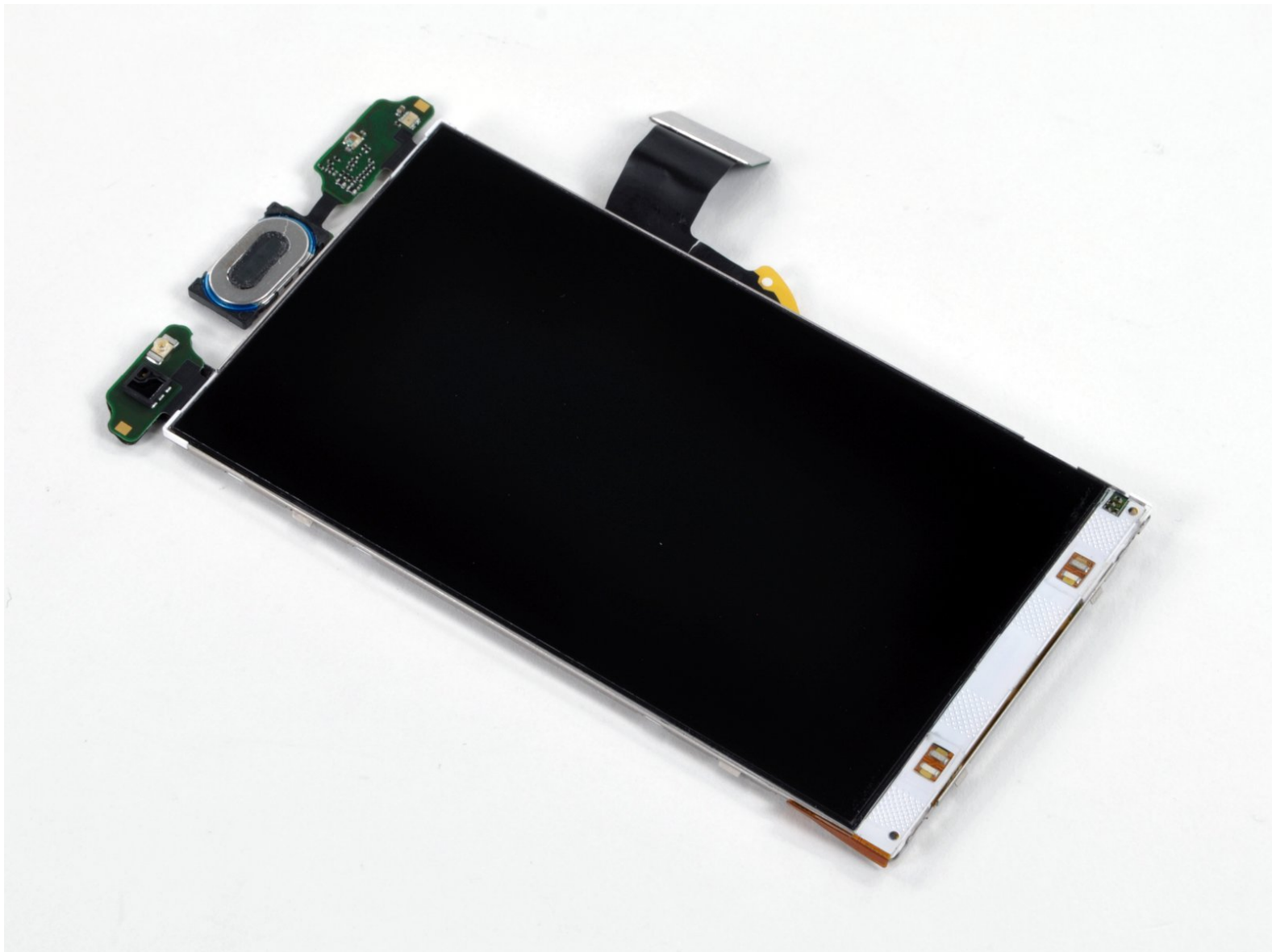




Motorola Droid 2 LCD Replacement

Replace a broken LCD to bring new life to your dying Droid 2.

Written By: Andrew Bookholt



INTRODUCTION

Use this guide to replace your Droid 2's LCD.

TOOLS:

- [Spudger](#) (1)
 - [T3 Torx Screwdriver](#) (1)
 - [T5 Torx Screwdriver](#) (1)
-

Step 1 — Battery



- Slide the battery cover toward the bottom edge of the phone.
- Remove the battery cover from the rear of the phone.

Step 2



- Lift the battery out of the Droid 2 from the edge closest to the bottom of the phone.
- Remove the battery from the Droid 2.

Step 3 — Rear Case



- Using the tip of a spudger, peel up one corner of the silver ribbon below the battery compartment.
- Peel the ribbon off the phone.

Step 4



- Insert the flat end of a spudger and pry the plastic camera cover up off the phone.

⚠ The thin plastic cover is attached to the phone with an adhesive. Work slowly and carefully.

Step 5



- Use the tip of a spudger to remove the camera bezel stuck to the rear case.

Step 6



- Remove the seven 5.5 mm T5 Torx screws securing the rear case to the inner case.

Step 7



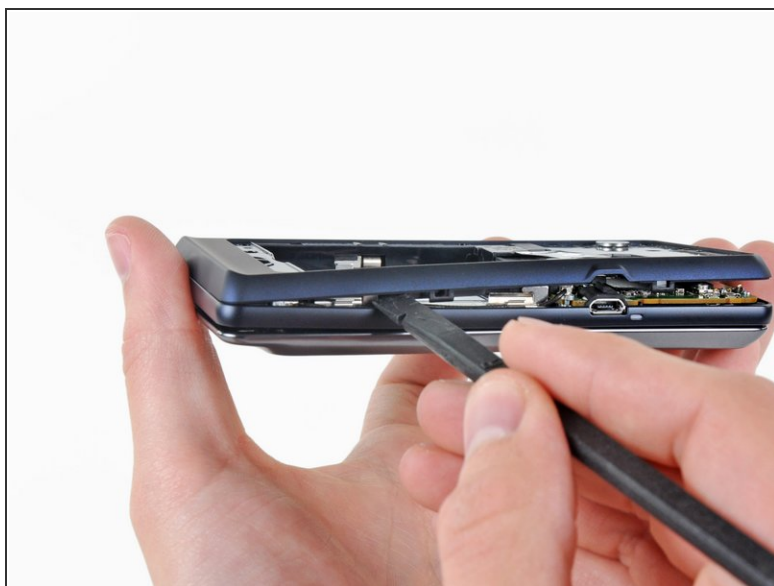
- Insert the flat end of a spudger and pry downwards to release the plastic tab holding the rear case to the motherboard screw.

Step 8



- Gently insert a spudger between the rear case and front case at the top of the phone, near the audio jack.
- Carefully pry the top edge of the rear case up from the rest of the phone.

Step 9




- With the spudger still inserted between the rear case and front case, slide the spudger along the right edge of the device, moving toward the bottom, prying as you go.
- Continue prying along the bottom edge of the device from right to left, freeing it from the front panel.

Step 10




- Continue prying the rear case from the front case along the left side, moving from bottom to top.
- Lift the rear case up out of the phone.

 At this point, the button covers on the side of the phone are free and may fall out if you tip the phone upside down.

Step 11 — Speaker



- Carefully lift the speaker/antenna assembly up and out of the phone.
-  If you are re-assembling your phone, insert any power, camera, or volume buttons that may have fallen out at this point.

Step 12 — Motherboard



- Use a spudger to pry the antenna cable connectors from their respective sockets on the motherboard and the speaker/antenna board.
- De-route the antenna cable by pulling it out of the metal clips along the side of the front case.

Step 13



- Peel the black rubber sheet covering the side button and display ribbon connectors on the motherboard.

Step 14



- Disconnect the power button/volume button connector from its socket on the motherboard using the flat end of a spudger.

Step 15



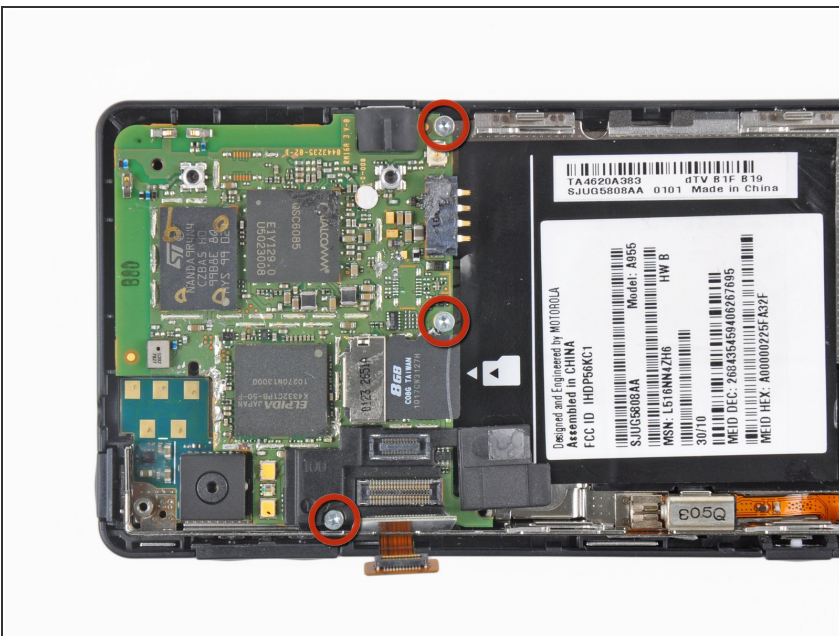
- Disconnect the display ribbon connector from its socket on the motherboard using the flat end of a spudger.

Step 16



- Use the flat end of a spudger to remove the small black plastic piece stuck to the battery connector.

Step 17



- Remove three 3.8 mm T5 Torx screws securing the motherboard to the front case.
- ⚠ Don't attempt to remove the motherboard yet, it is still attached by the keypad ribbon connector.

Step 18



- ❗ Carefully lift the motherboard from the front case and lay it next to the Droid 2, minding the keypad connector that is still attached.
- Disconnect the keypad connector by prying it straight up off its socket on the motherboard.
- Remove the motherboard from the Droid 2.

Step 19 — Front Panel



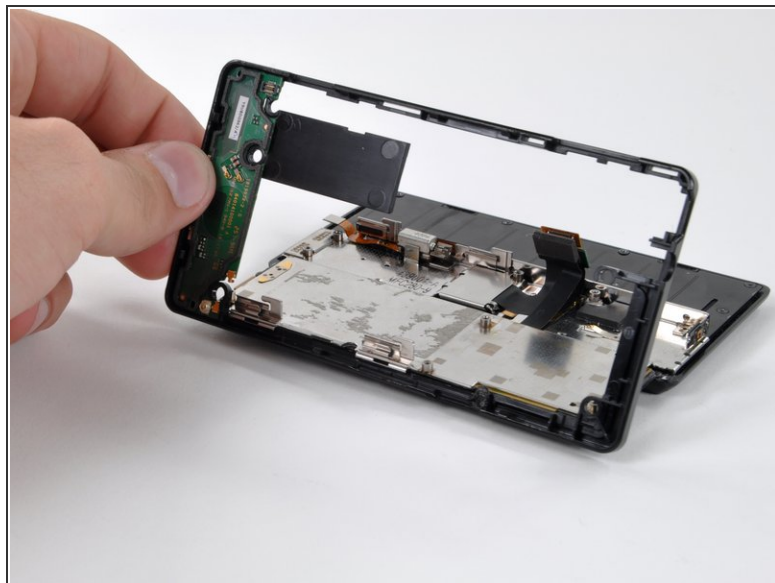
- Disconnect the camera button/vibrator connector by prying it straight up off its socket on the speaker board with a spudger.


Step 20



- Remove the large sticker stuck to the inner face of the battery compartment.

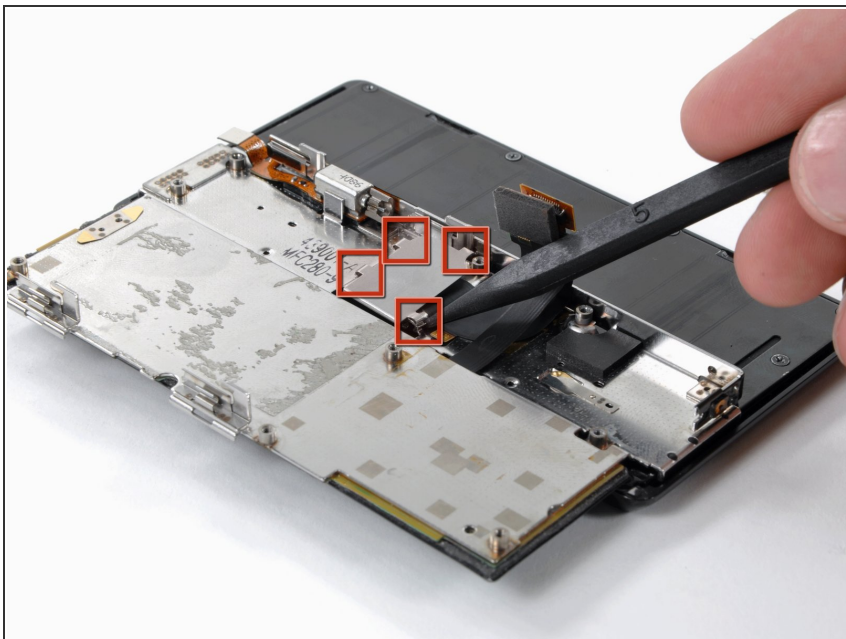
Step 21



 Slide the phone open.

- Lift up the edge of the black plastic rim that includes the speaker board from the side closest to the keypad.
- Continue lifting the side of the rim until it is almost vertical, and wiggle it free from the back of the LCD assembly.

Step 22



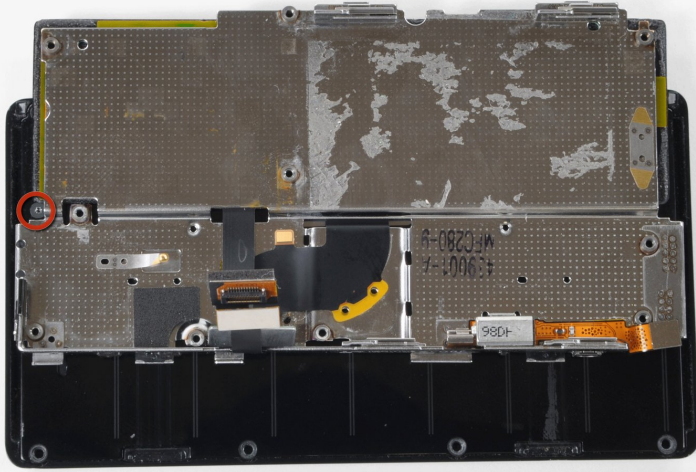
- Remove the EMI shield by releasing the clips shown with the tip of a spudger.

Step 23



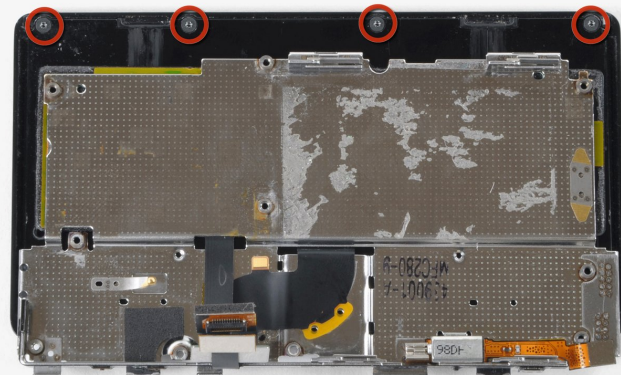
- Remove the five 2.5 mm T3 Torx screws along the outer edge of the slider panel.

Step 24



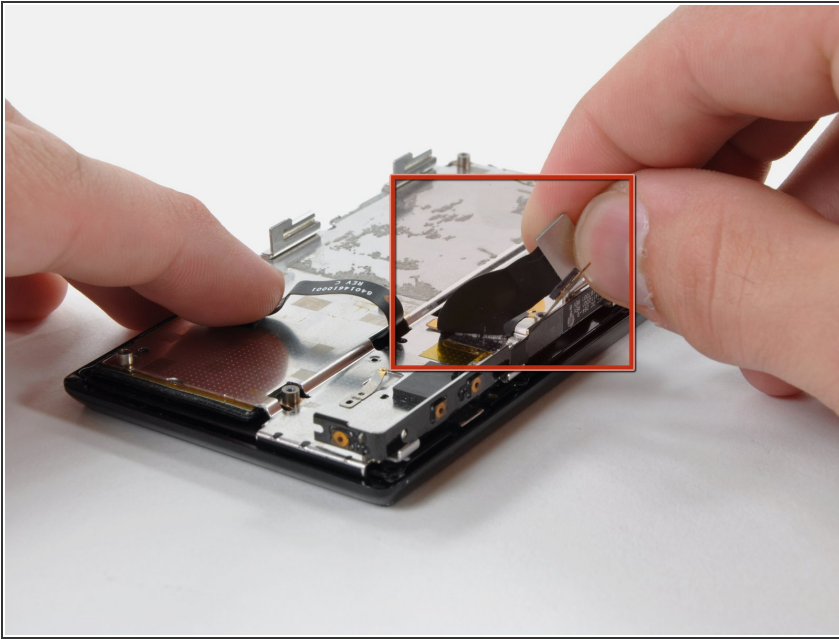
- i Slide the phone until a sixth screw is visible, as shown.
- Remove the newly revealed 2.5 mm T3 Torx screw.

Step 25



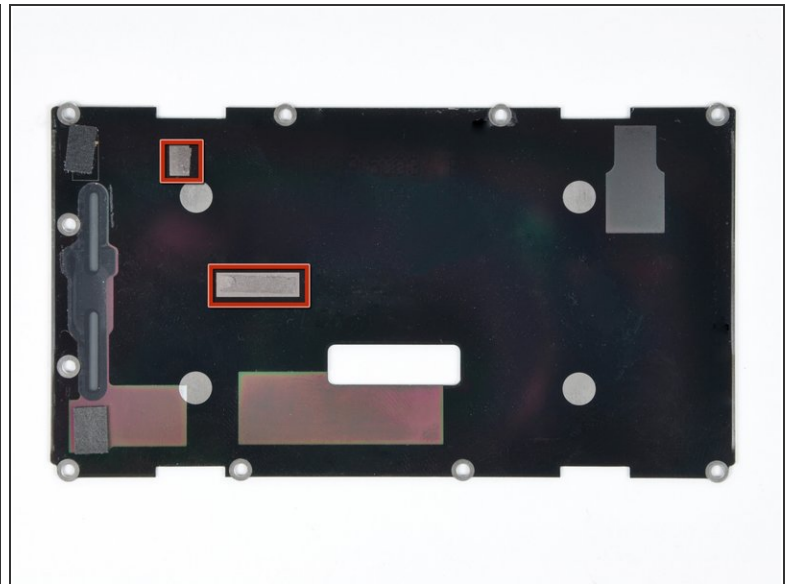
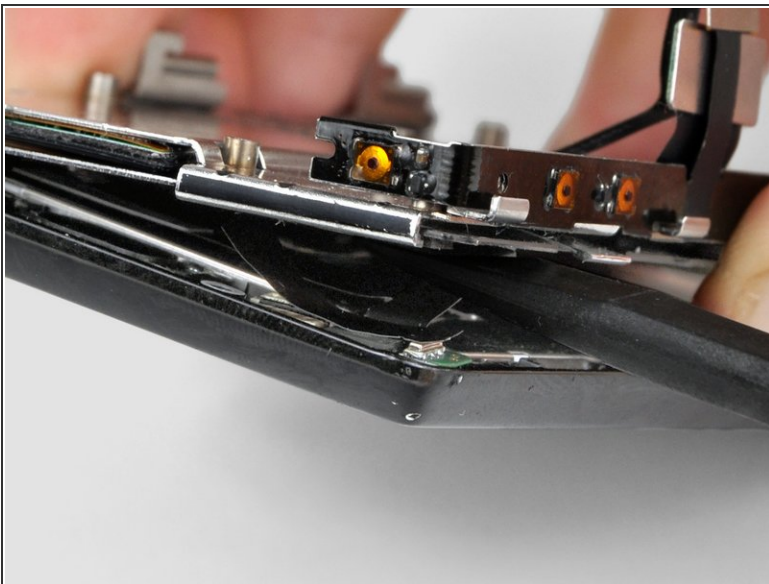
- i Continue sliding the phone in the same direction, past its "closed" position, until four more screws are revealed.
- Remove the four 2.5 mm T3 Torx screws along the outer edge of the slider.

Step 26



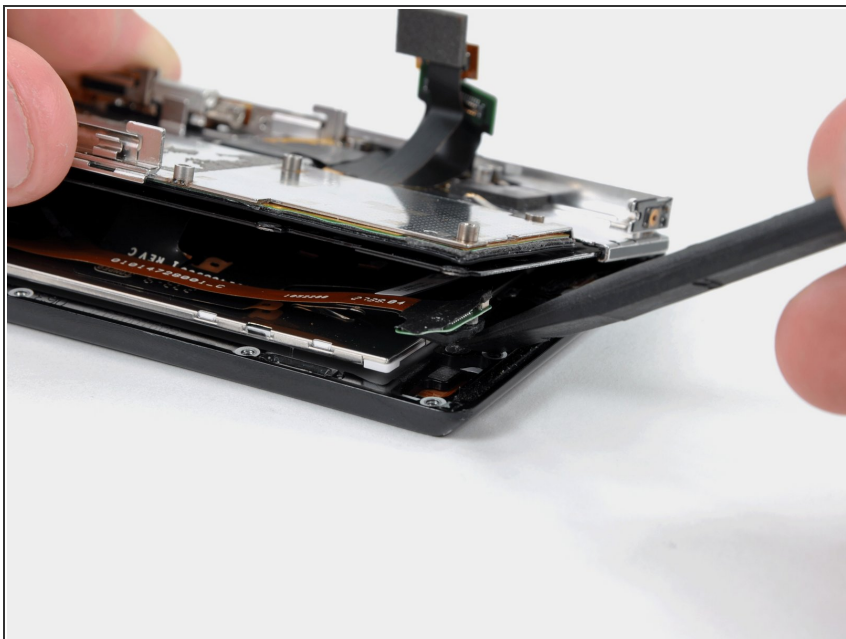
- ❗ Return the phone to its normal "closed" position.
- Peel the display ribbon up from the keypad's metal backing.
- ★ The ribbon cannot be completely removed yet, because it is attached to the back of the LCD.
- ⚠ At this point take extra caution as to not tear the ribbon cable.

Step 27



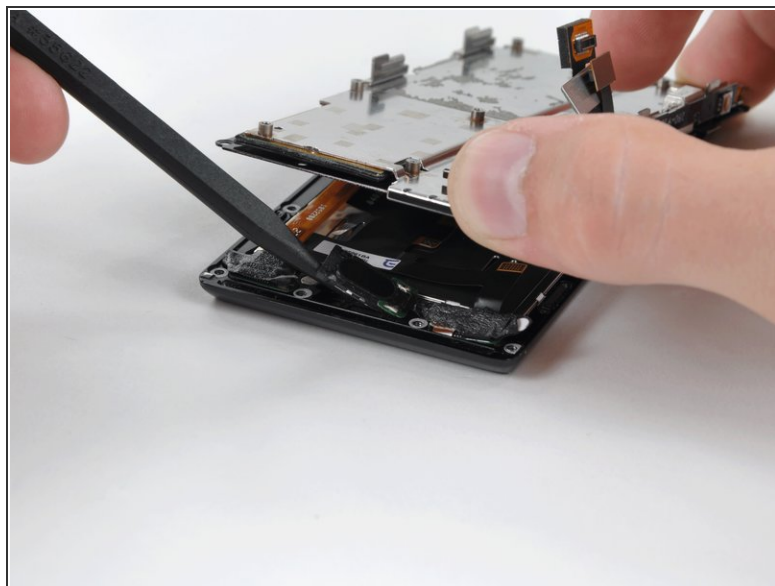
- Insert a spudger between the back and front case of the display assembly, and peel the two ribbon cables off the two adhesive pads along the back case of the display assembly.
- ❗ The location of the pads on the back case is shown. The top left corner of the case is the corner of the phone shown in the first picture.

Step 28



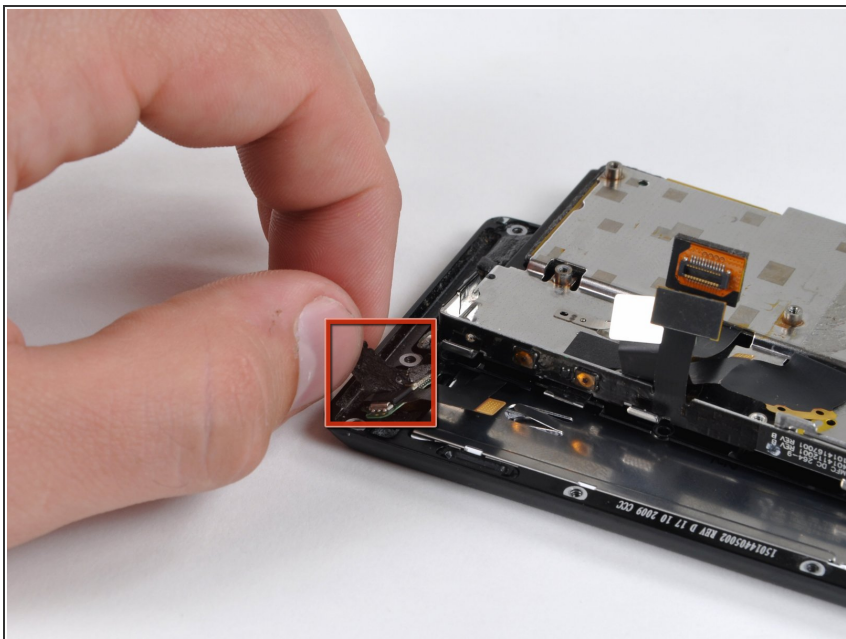
- Use the flat end of a spudger to lift the board that contains the ambient light sensor and display data cable connector out of the screen housing.

Step 29



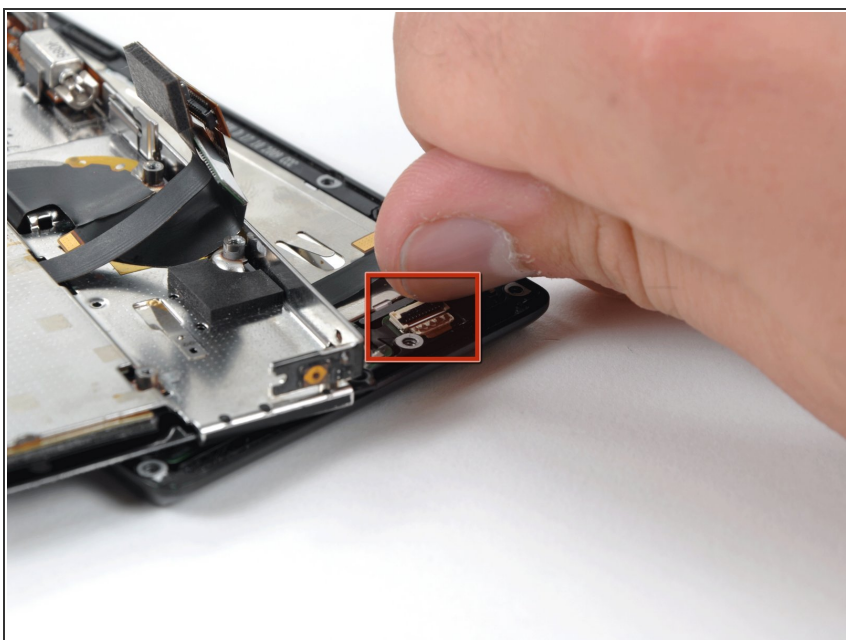
- Use the tip of a spudger to lift the speaker out of the screen housing.

Step 30



- Peel off the black tape to reveal the front panel connector.

Step 31



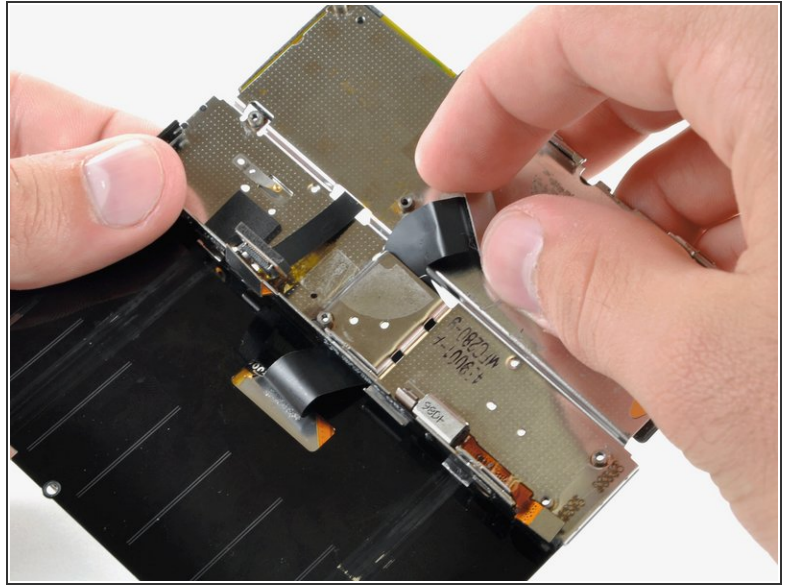
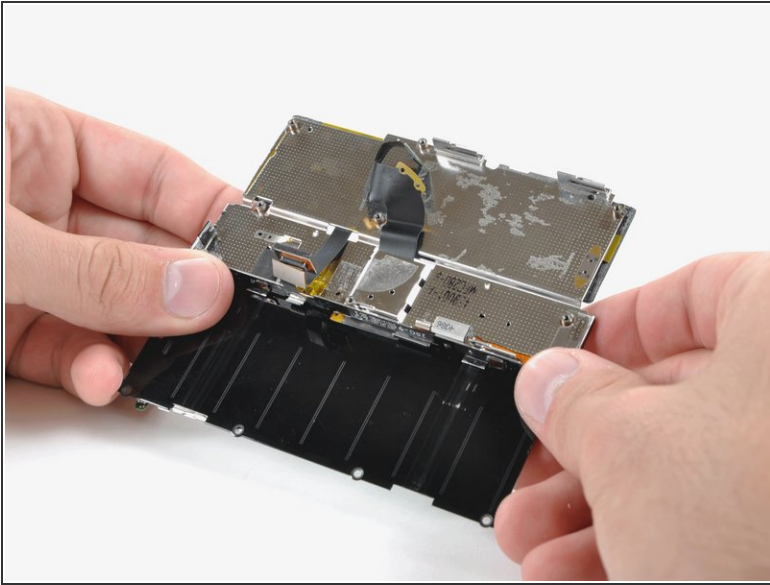
- Remove the front panel ribbon cable from the ZIF connector on the board that is attached to the display ribbon.

Step 32



- Flip the phone over and remove the front panel.

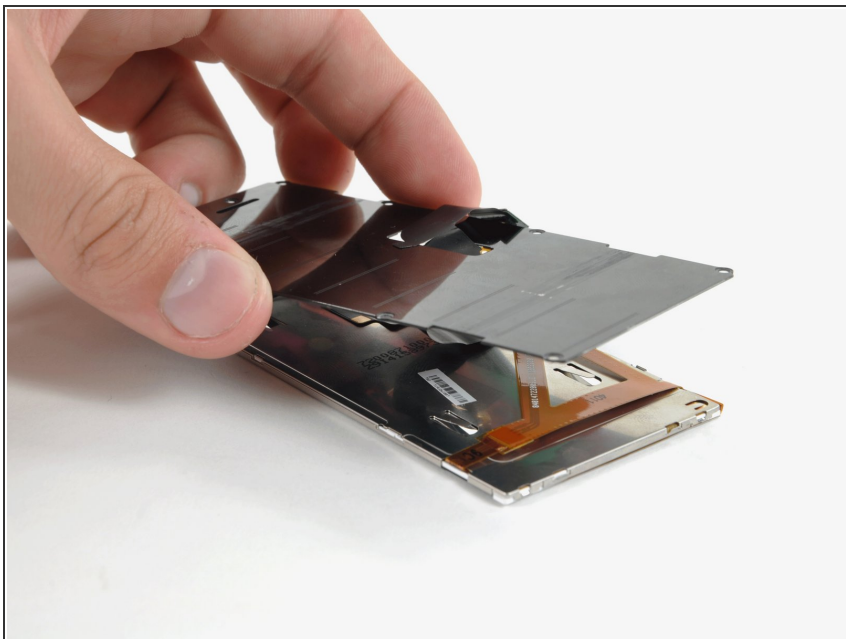
Step 33 — LCD



i Slide the phone open.

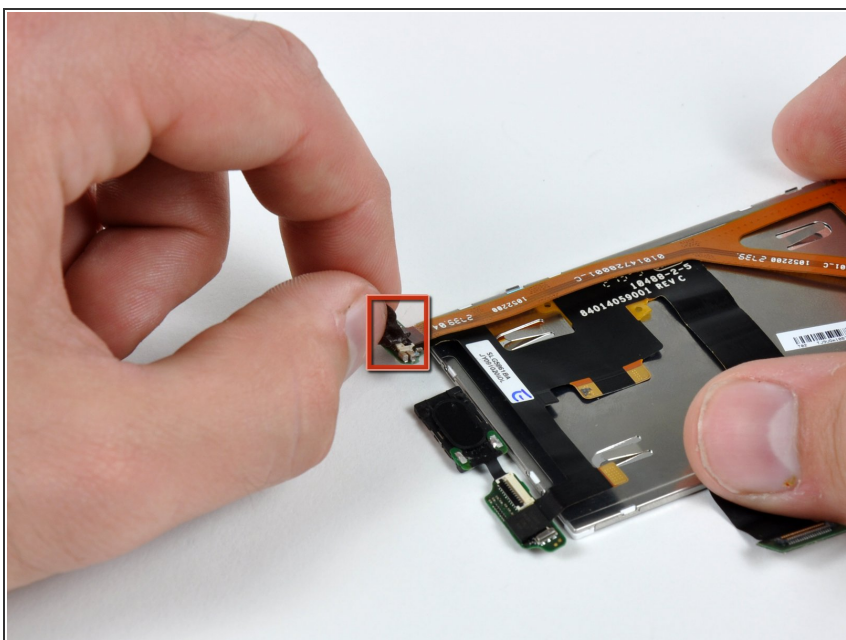
- While feeding the display ribbon cable through the slot in the metal keypad backing, slowly continue to slide the phone open past its normal allowed point.
- Continue feeding the display ribbon cable through and sliding the phone until the LCD assembly is separated from the keypad.

Step 34



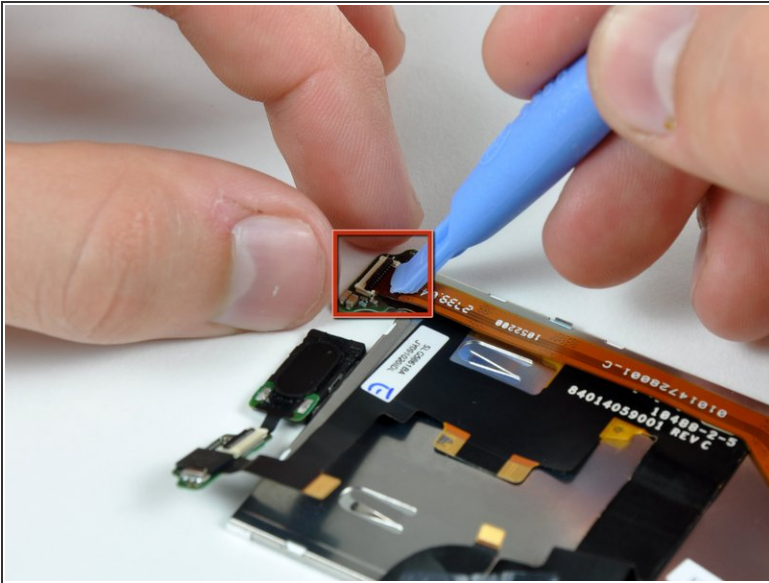
- Lift the back cover off the display assembly, feeding the ribbon cable through the slit as you go.

Step 35



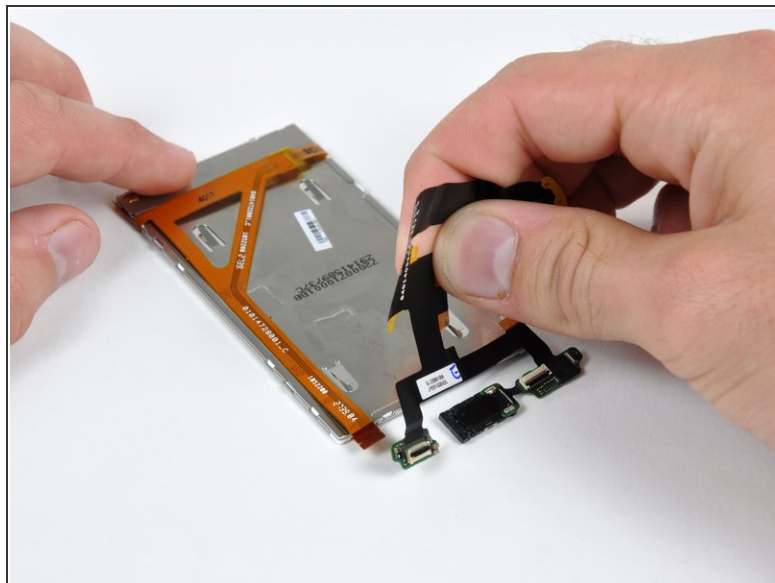
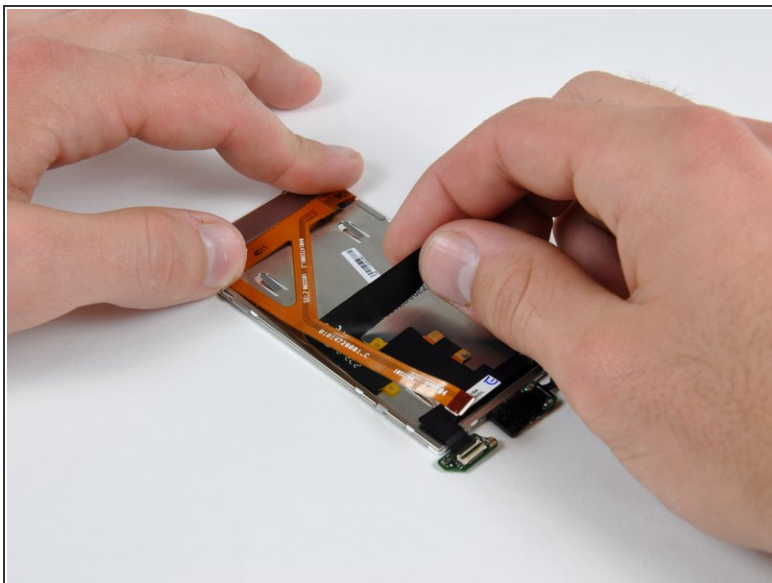
- Peel away the black tape to reveal the display data cable connector.

Step 36



- Use an iPod opening tool or fingernail to flip up the black lever on the ZIF connector.
- Pull the orange display data cable from the ZIF connector.

Step 37



- Peel the display ribbon cable from the back of the LCD. The ribbon cable is attached with adhesive, so work slowly to avoid damaging it.
- Remove the display ribbon from the back of the LCD.

To reassemble your device, follow these instructions in reverse order.