



PlayStation 3 Blu-ray Disc Drive Replacement

Use this guide to replace your PlayStation 3's...

Written By: Walter Galan



INTRODUCTION

Use this guide to replace your PlayStation 3's Blu-ray disc drive. Replacing a defective Blu-ray drive with a replacement requires swapping the Blu-ray drive board from the old drive onto the replacement.



TOOLS:

- [Phillips #1 Screwdriver](#) (1)
- [Spudger](#) (1)
- [TR10 Torx Security Screwdriver](#) (1)



PARTS:

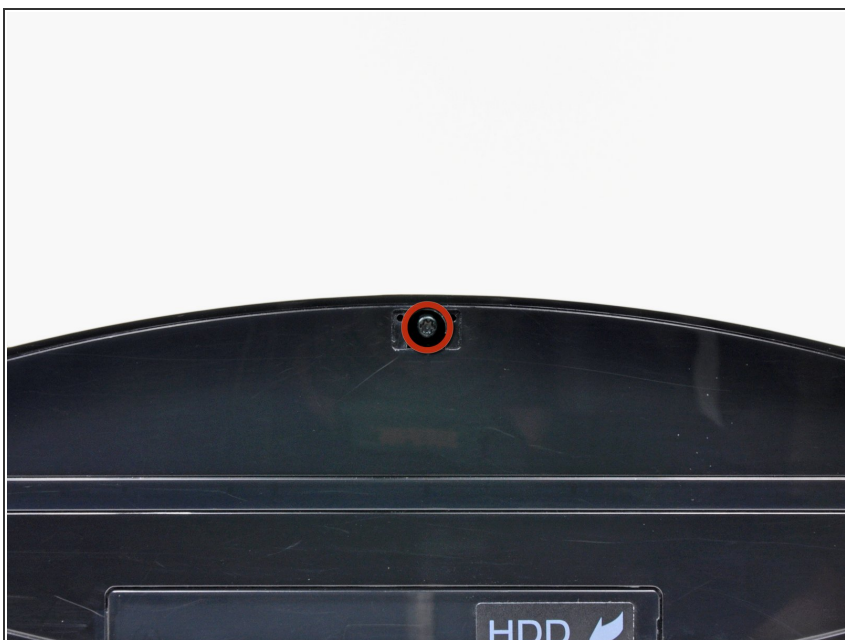
- [Sony PlayStation 3 Blu-ray Drive Power Cable](#) (1)
- [Sony PlayStation 3 Blu-ray Drive Data Cable](#) (1)

Step 1 — Smart Plate



- Use the tip of a spudger to remove the black rubber screw cover from the side of the PS3.
- ⓘ The screw cover may be underneath a warranty sticker. This sticker will change appearance, and show "VOID" after it has been removed.

Step 2



- Remove the single 8.5 mm T10 Security Torx screw from the smart plate.

Step 3



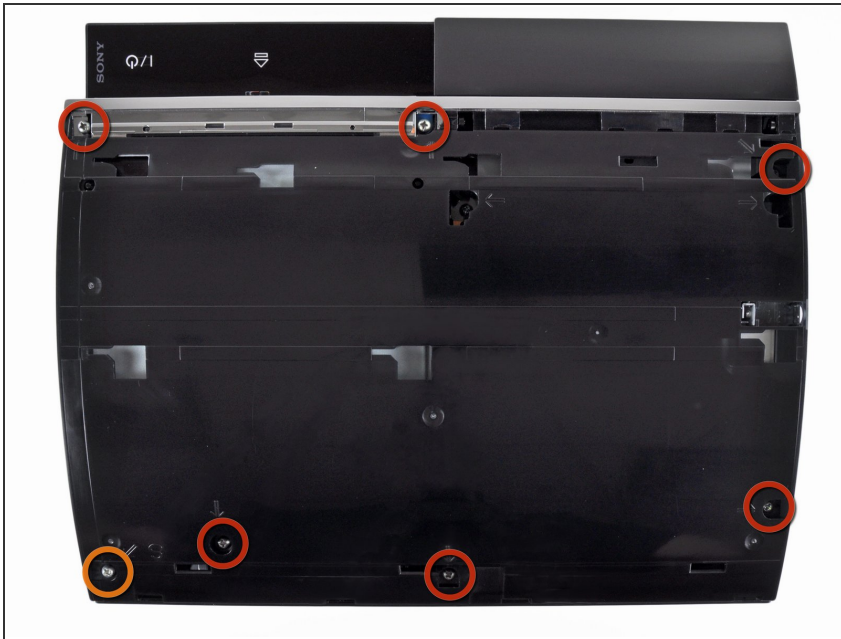
- Pull the smart plate toward the hard drive bay, then lift it off the body of the PS3.

Step 4



⚠ Be sure to keep track of the small metal bracket loosely held in the top cover, if equipped.

Step 5 — Top Cover



- Remove the following seven screws:
 - Six 52 mm Phillips screws
 - One 30 mm Phillips screw

Step 6



- Lift the top cover from its rear edge and rotate it toward the front of the PS3.
- Remove the top cover.
- There is a plastic hook located in a hole on the top back right hand side corner. Carefully push the plastic hook a bit from the rear of the machine with a spudger to release the rear right of the casing.

Step 7 — Blu-ray Disc Drive



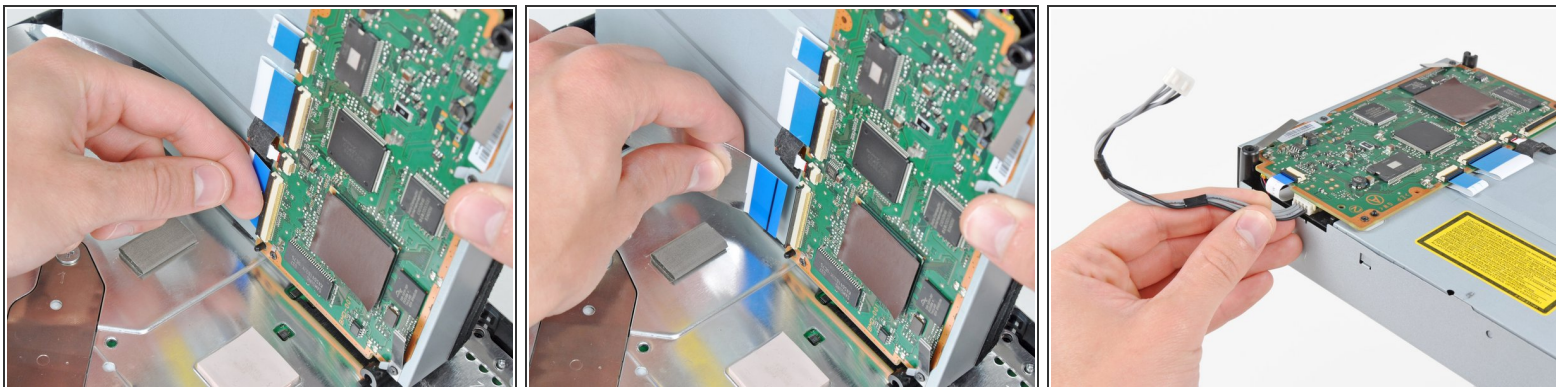
- Disconnect the Blu-ray power cable from the motherboard.
- ❗ Pull the connector straight up and out of its socket.

Step 8



- Lift the Blu-ray drive from the edge nearest the power supply and rotate it away from the chassis enough to access its ribbon cable.

Step 9



- Use your fingernail to flip up the retaining flap on the Blu-ray ribbon cable socket.

⚠ Be sure you are prying up on the retaining flap, **not** the socket itself.

- Pull the ribbon cable out of its socket.
- Remove the Blu-ray drive from the PS3.

★ If replacing the Blu-ray drive, transfer the power cable to your new drive.

To reassemble your device, follow these instructions in reverse order.