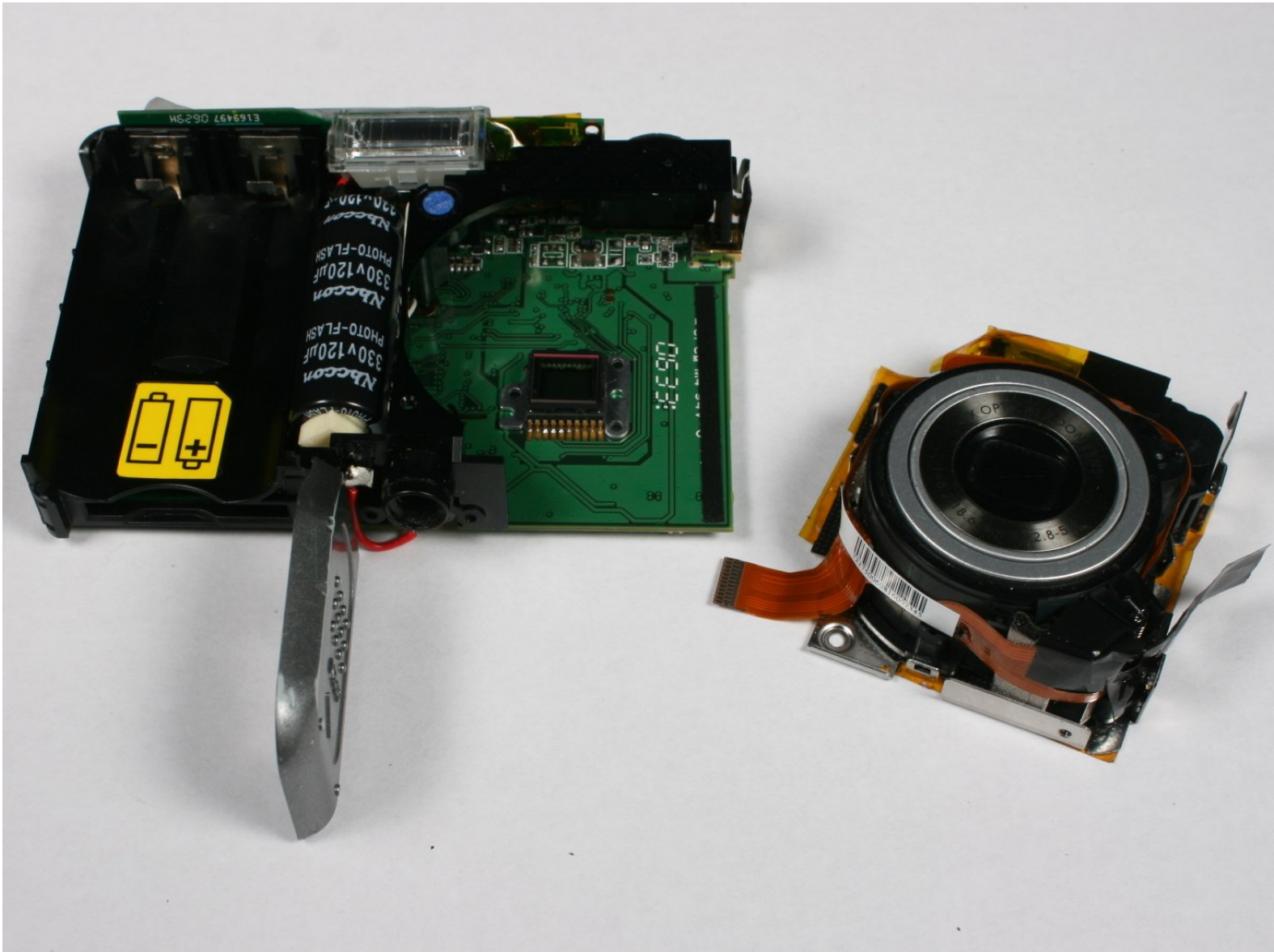




Polaroid i533 Zoom Lens Replacement

Use this guide to replace the zoom lens in a Polaroid i533.

Written By: Aric Champagne



INTRODUCTION

The zoom lens moves in and out of the camera while focusing on subjects at various distances. At times, the lens can stop functioning correctly.

TOOLS:

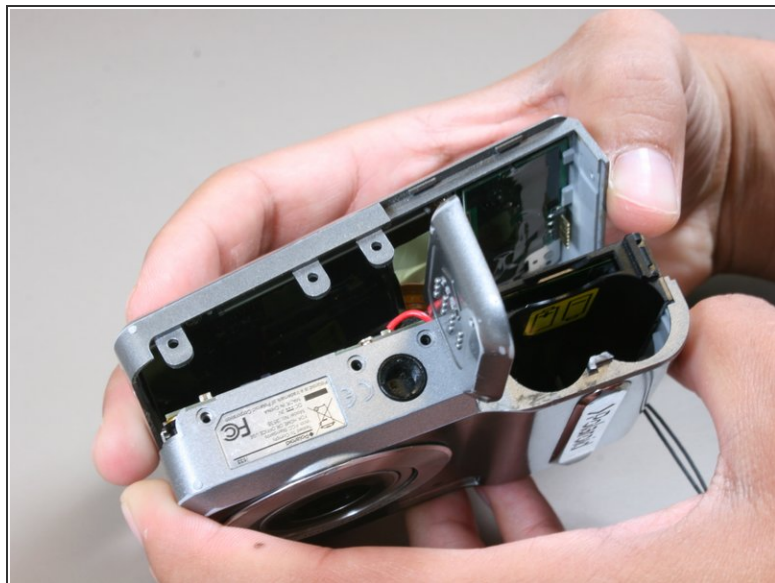
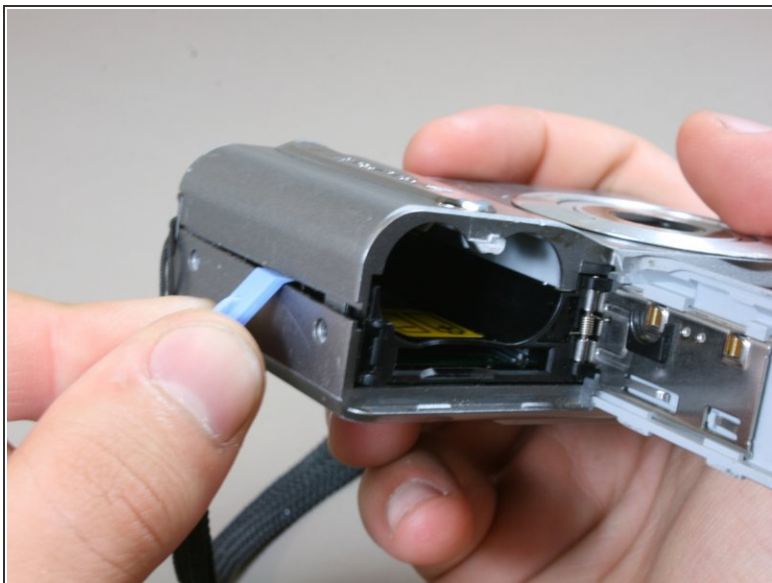
- [Phillips #00 Screwdriver](#) (1)
 - [Tweezers](#) (1)
 - [iFixit Opening Tools](#) (1)
 - [Anti-Static Project Tray](#) (1)
-

Step 1 — Zoom Lens



- Use a Phillips #00 driver to remove four screws (3mm) on the left side of the camera. Keep all screws for reassembly.
- Directly on the bottom of the camera there are 3 screws, unscrew all with a Phillips #00 driver.
- Unscrew two screws on the right side of the camera with a Phillips #00 driver.

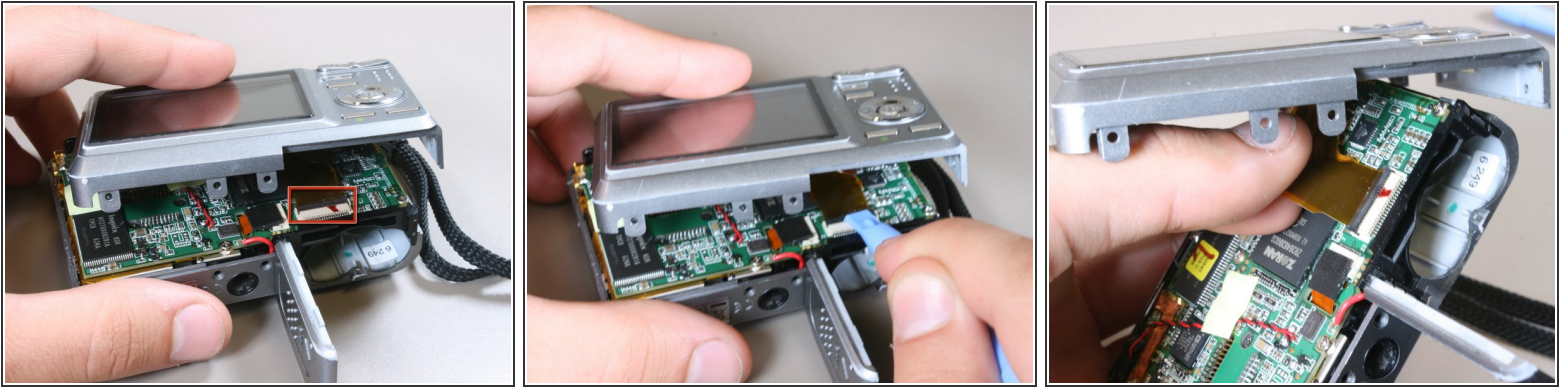
Step 2 — Opening back cover



- Locate the battery door on the bottom of the camera. Then slide the battery door open using the iFixit opening tool.
- Gently open the back cover of camera.

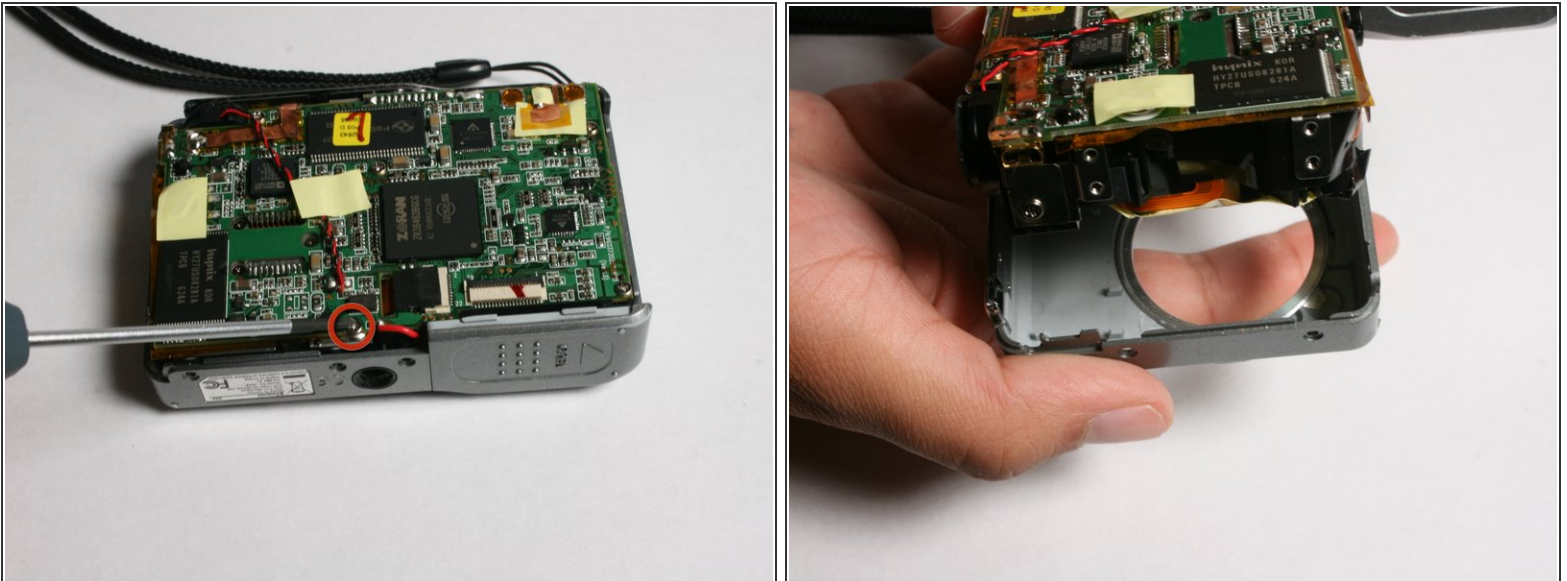
 Do not pull the cover off completely, because it is still attached to the logic board.

Step 3



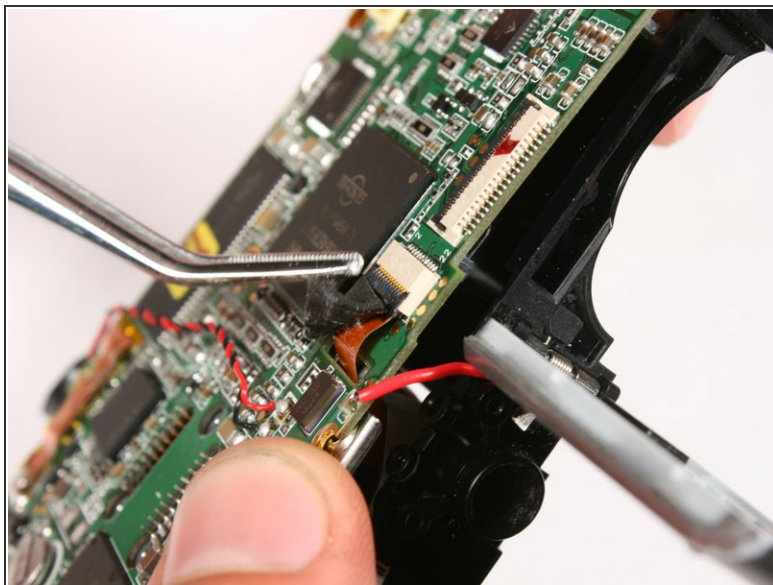
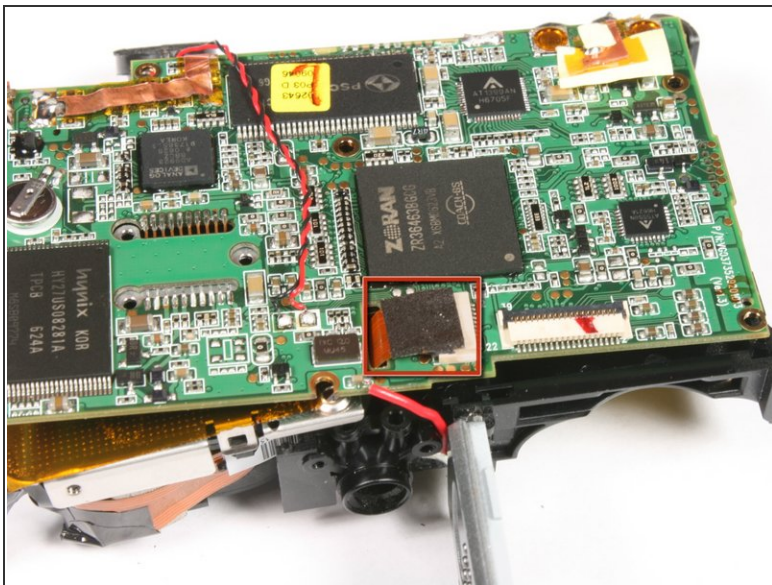
- Locate where the LCD screen ribbon is attached to the logic board.
- Using the ifixit opening tool, push the black tab connecting the LCD screen ribbon to the logic board away from you.
- Gently pull the ribbon away from the logic board with thumb and index fingers.

Step 4 — Removing screws on logic board



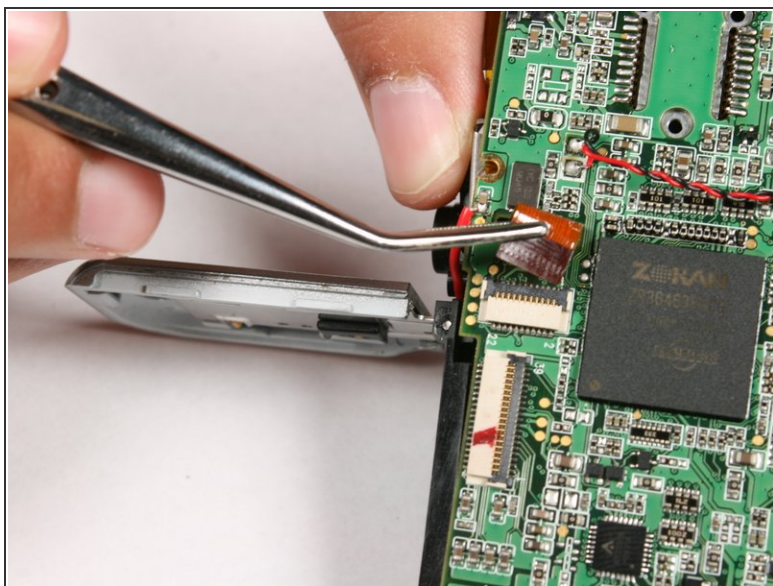
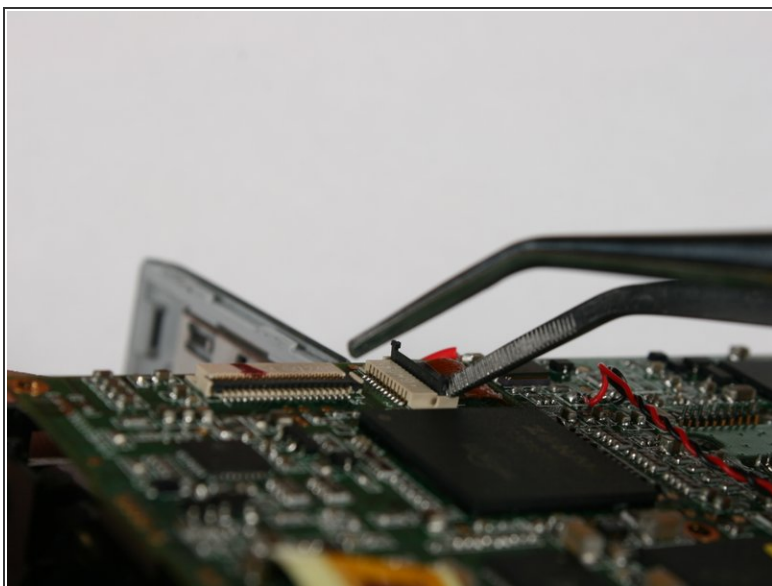
- Using the Phillips #00 screwdriver, unscrew and remove the (3mm) screw on the bottom of the logic board above the tripod mount. Keep the screw for reassembly.
- Gently pull the front of the case off.

Step 5



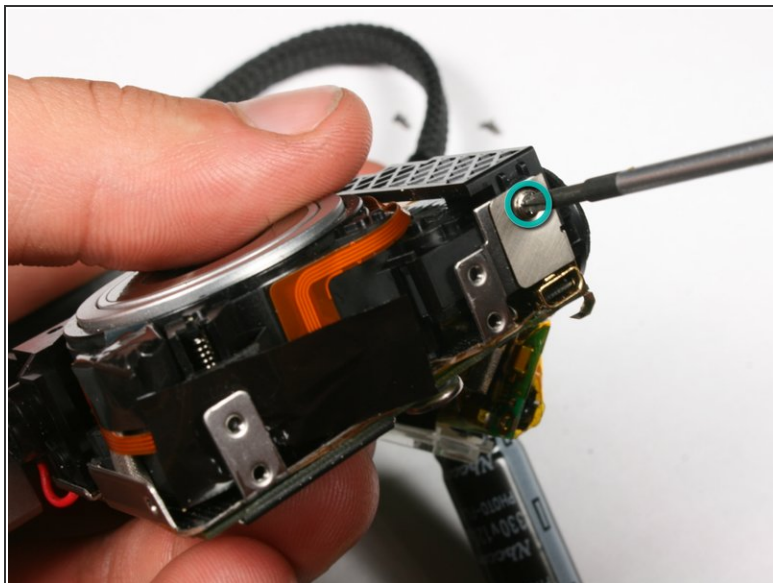
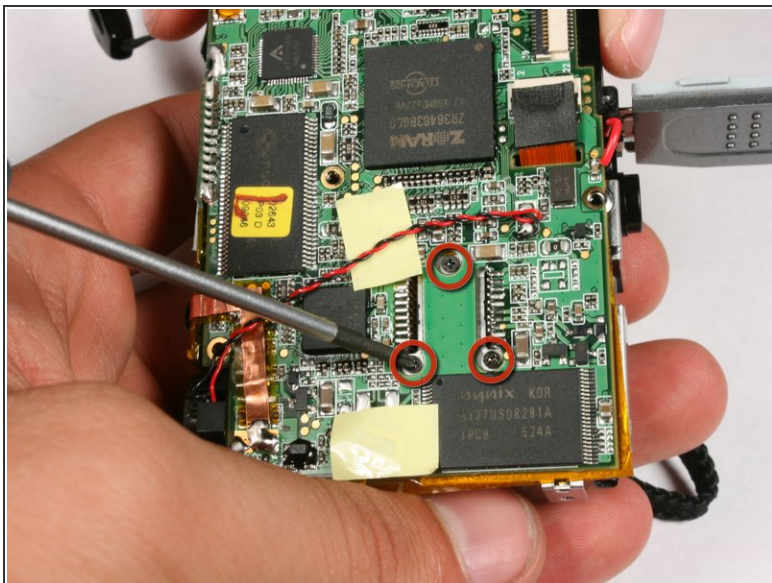
- Locate the black patch covering the ribbon that connects the zoom lens to the logic board.
- Carefully remove the black patch using tweezers.

Step 6 — Removing zoom lens ribbon



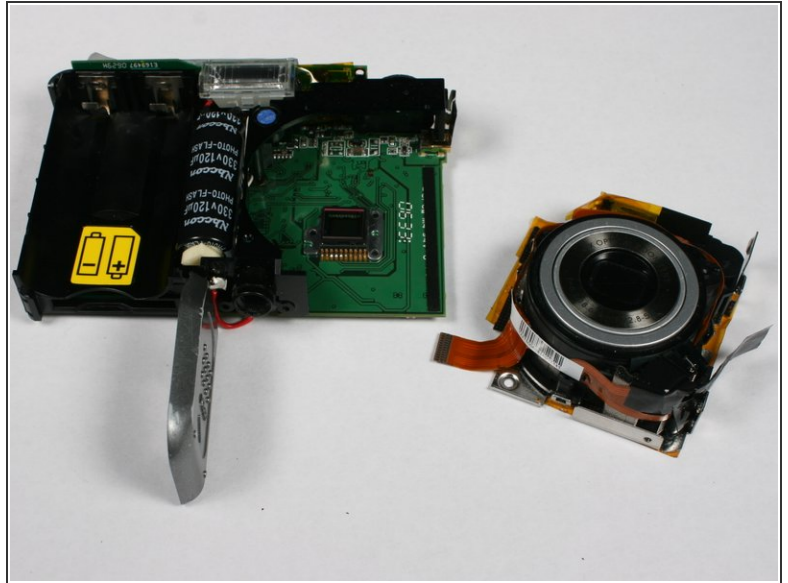
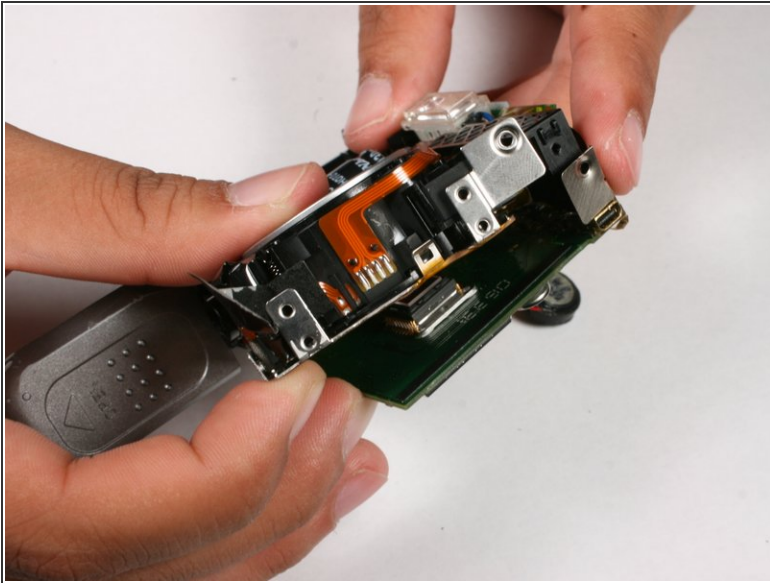
- Using tweezers gently lift the black tab that holds the zoom lens ribbon in place.
- Gently remove the zoom lens ribbon.

Step 7



- Use the Phillips #00 screwdriver and unscrew then remove the three (3mm) screws shown on the back of the logic board.
- On the left side of the logic board use the same screwdriver. Unscrew and remove the 3mm screw. Keep all screws for reassembly.

Step 8



- It is now safe for you to remove the zoom lens.
- To reassemble the device, follow these steps in reverse.

To reassemble your device, follow these steps in reverse order.