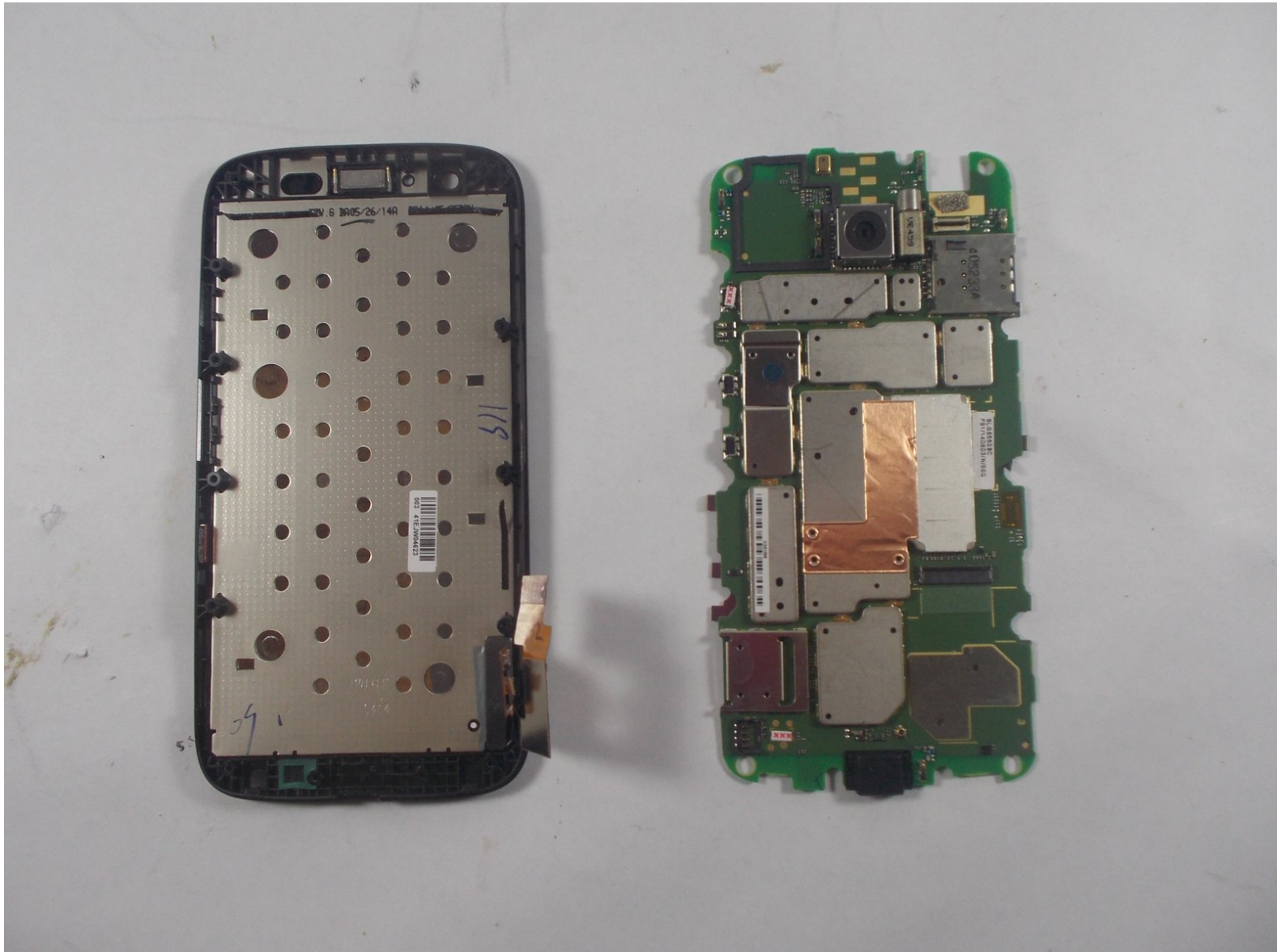




Motorola Moto G 1st Generation Display Assembly Replacement

Replace the display assembly of your Motorola Moto G 1st Generation.

Written By: Radostin Lobodov



INTRODUCTION

Use this guide to replace the display of the Motorola Moto G 1st Generation.




TOOLS:

- [iFixit Opening Tools](#) (1)
 - [T5 Torx Screwdriver](#) (1)
 - [Tweezers](#) (1)
-

Step 1 — Rear Panel



 Before you start following any of the steps of this guide, completely turn the device off.

- Take the plastic back cover off by either using a plastic Pry tool or simply using your hands. Start from the bottom by the charging port
- Remove any installed SIM card and memory microSD cards.
 - Push the SIM card into the phone, and the spring eject mechanism should release the card.
 - The microSD memory card(s) may not have an eject mechanism. If so, they must be removed **carefully** by pushing on the raised edge/bump that is built onto the card. Use your fingernail or a plastic or rubber tool, but not one that will scratch and damage the delicate card.

 Patience must be taken to prevent irreversible damage and loss of data on the card.

Step 2 — Removing the Screws



- Unscrew the 3.5mm screws, total of 14, located on the back protective cover by using a T5 Torx screwdriver.

Step 3 — Battery Cover



- Use a plastic opening tool to remove the protective cover.

⚠ Carefully work the plastic tool around all the edges of the phone.

- ⓘ The protective cover holds the **Volume** and the **Home** buttons which might fall off the assembly when the cover is removed.

This document was generated on 2021-03-20 04:12:44 AM (MST).

Step 4 — Disconnecting the Battery




- Disconnect the connection between the Battery and the Mother Board by using the Pry tool.

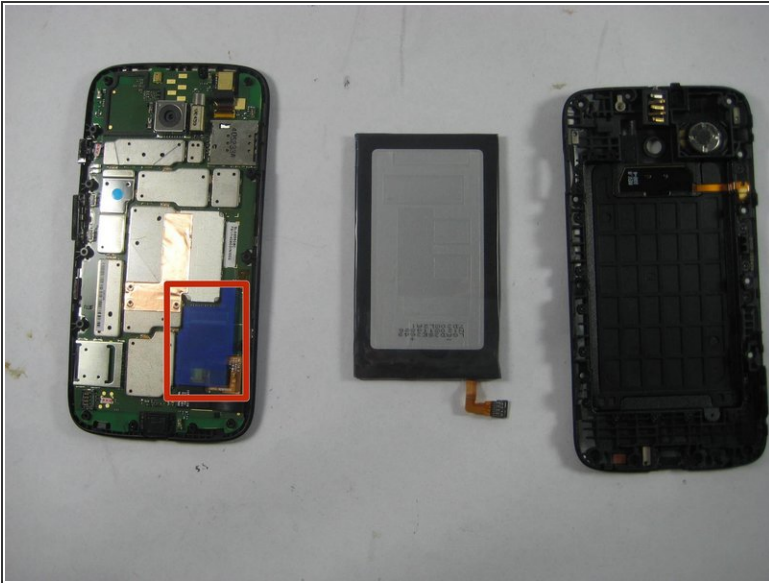
Step 5 — Removing the Battery



- With the battery already disconnected, work around its edge with the pry tool to remove it from the assembly.

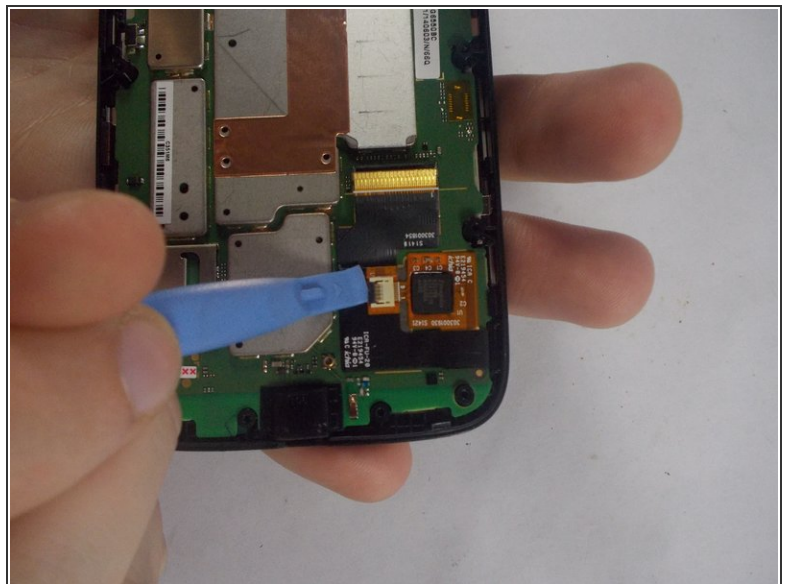
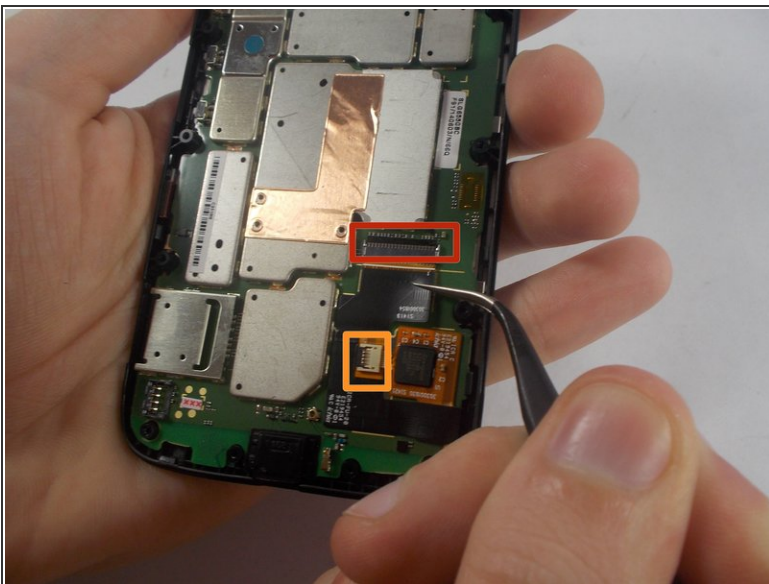
 The battery is attached with a sticker, so it may take some work to pry up. Just work at it slowly and carefully until you get it.

Step 6 — Removing the protective cover.



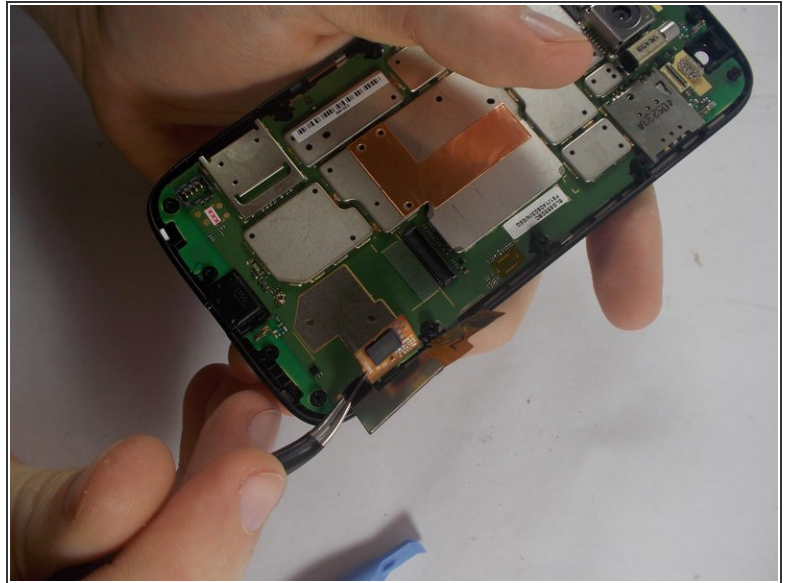
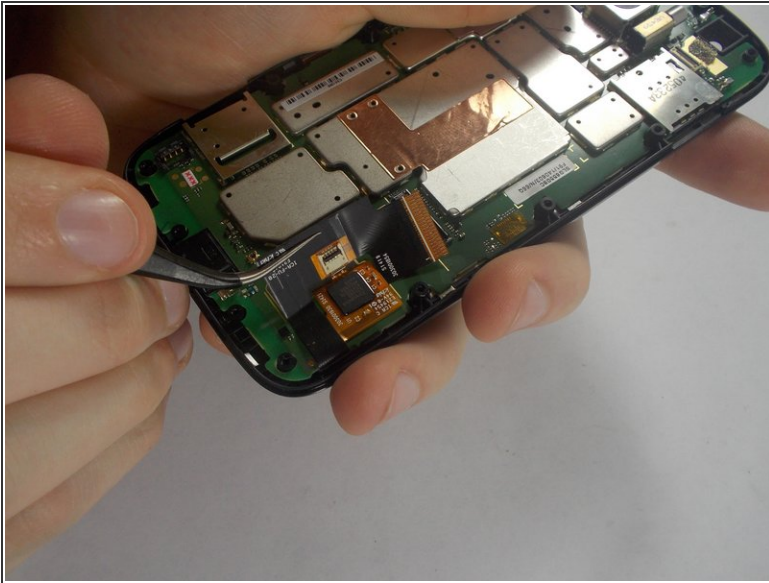
- Remove the plastic protective cover by using the tweezers.

Step 7 — Disconnecting the Display Cable.



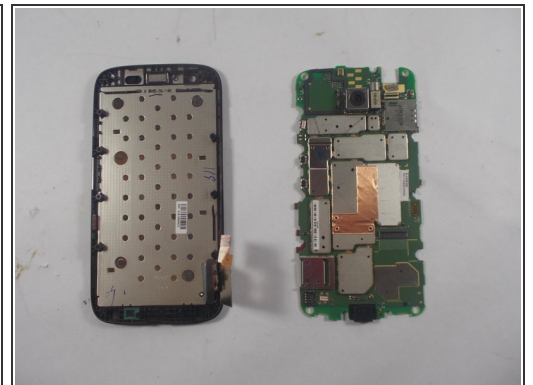
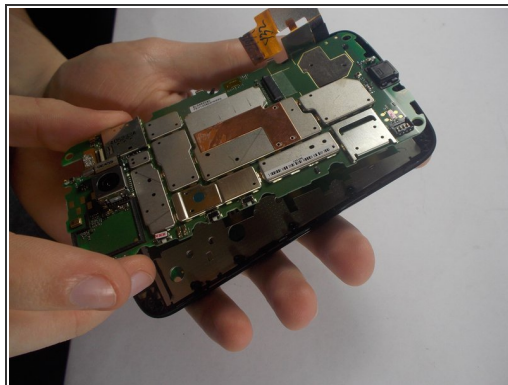
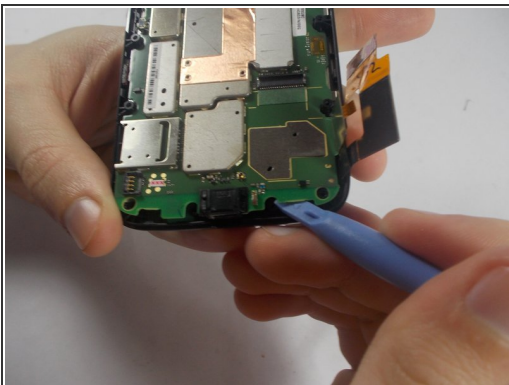
- Lift up the retaining flap on the large display cable ZIF connector.
- Carefully pull the display cable from its socket on the motherboard.
- Lift up the retaining flap on the small ZIF connector that sits at the middle of the display cable.

Step 8 — Releasing the Ribbon cable.



- Once the ribbon cable is disconnected, use the tweezers to pry it from the mother board.
- ⓘ The ribbon cable is connected to the mother board with adhesive. Work cautiously to peel it off with the tweezers.

Step 9 — Detaching the screen.



- Use the plastic prying tool and slowly work around the edges of the phone to detach the screen from the motherboard.

To reassemble your device, follow these instructions in reverse order.